

Adjustments of Areal Distribution of Simsboro Aquifer Pumping in Brazos Valley Groundwater Conservation District

Presented to
Groundwater Management Area 12

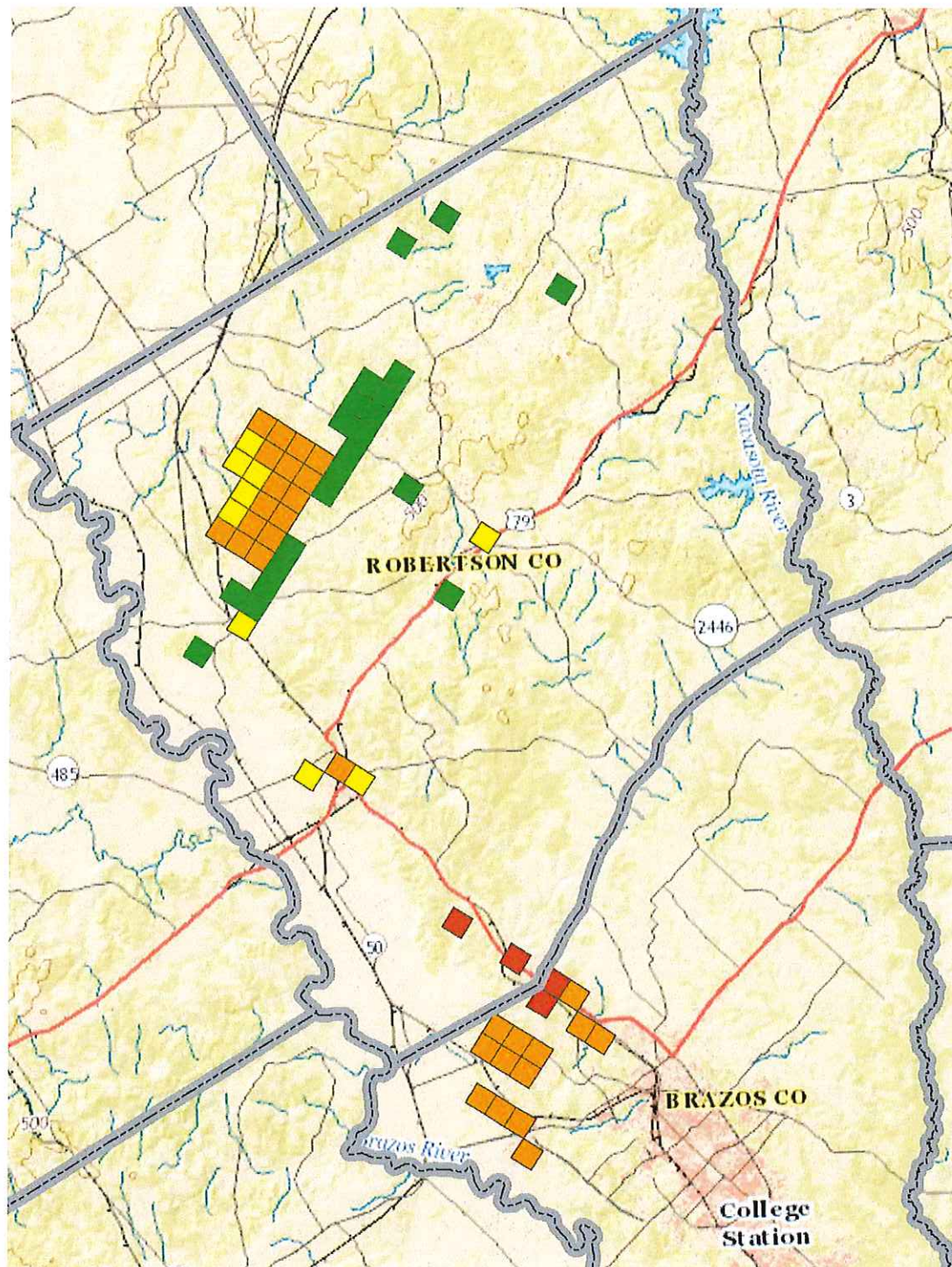
October 11, 2016

By: LBG-Guyton Associates

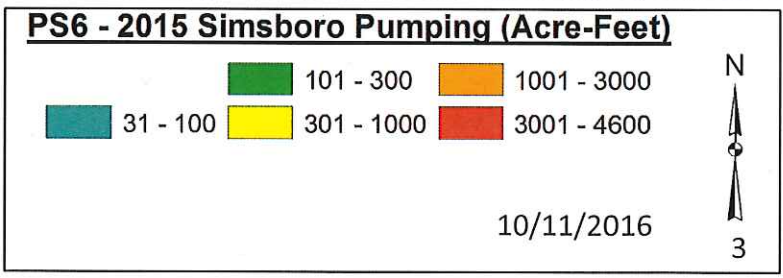


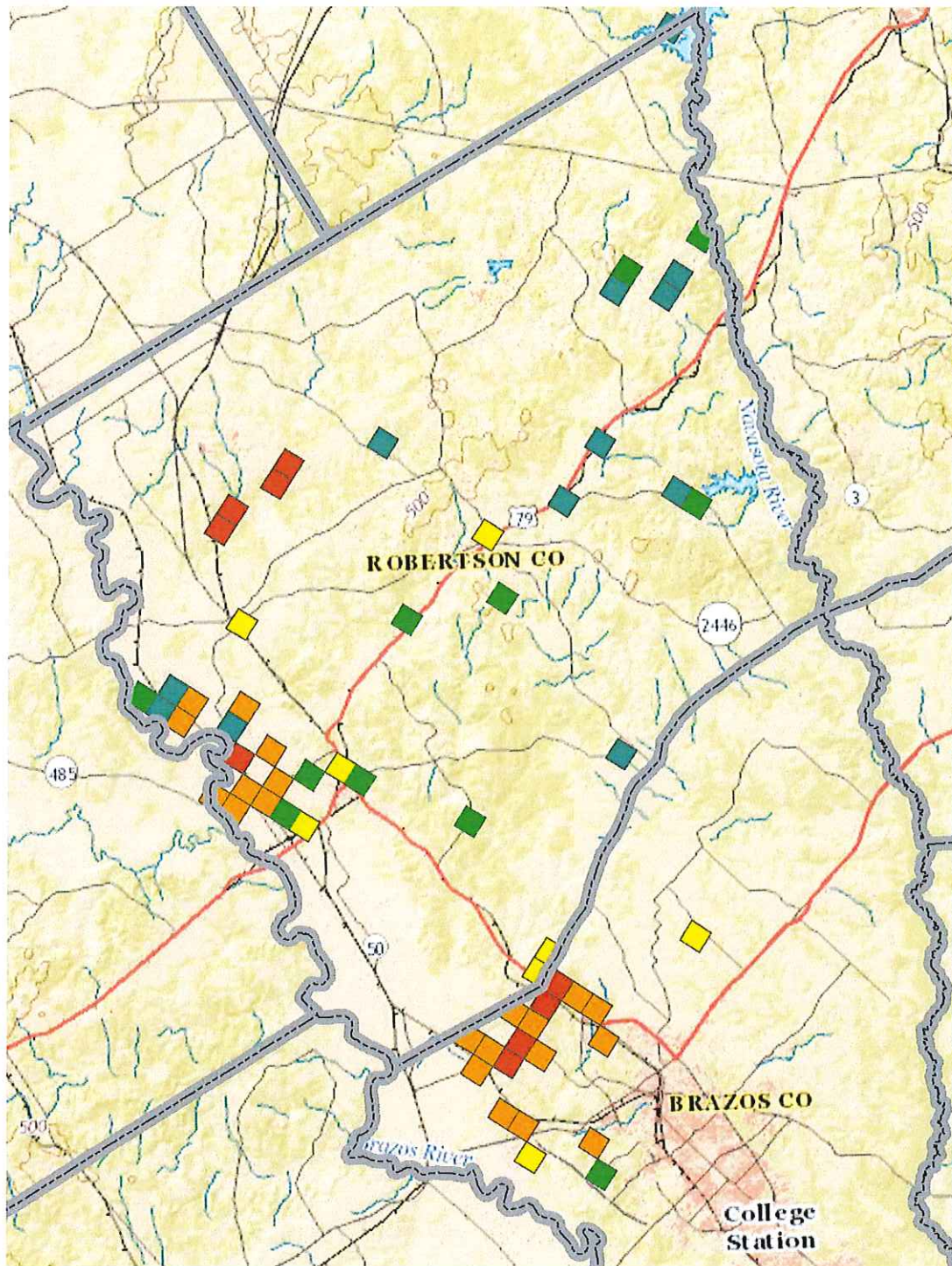
Redistribution of Pumping

- Redistribution of Pumping Only Occurred in BVGCD
- Resulted in Moving Pumping to Areas with Recorded Higher Usage
- Resulted in Adjustment in Future Pumping in North Brazos County



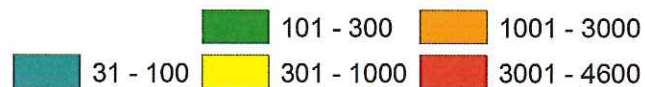
GMA 12 PS 6 Well File Simsboro Pumping Well File ID: PS6





GMA 12 Modified PS 6 Well File Simsboro Pumping Redistribution Well File ID: PS10

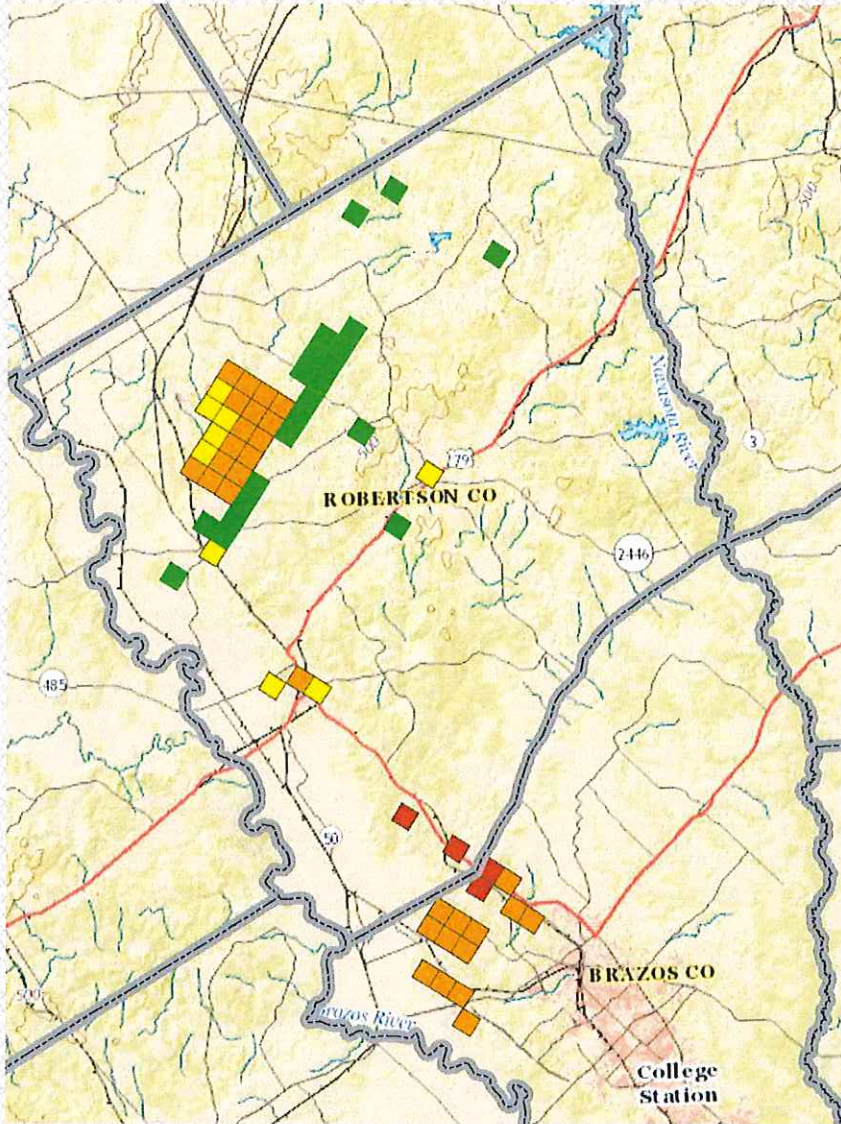
PS10 - 2015 Simsboro Pumping (Acre-Feet)



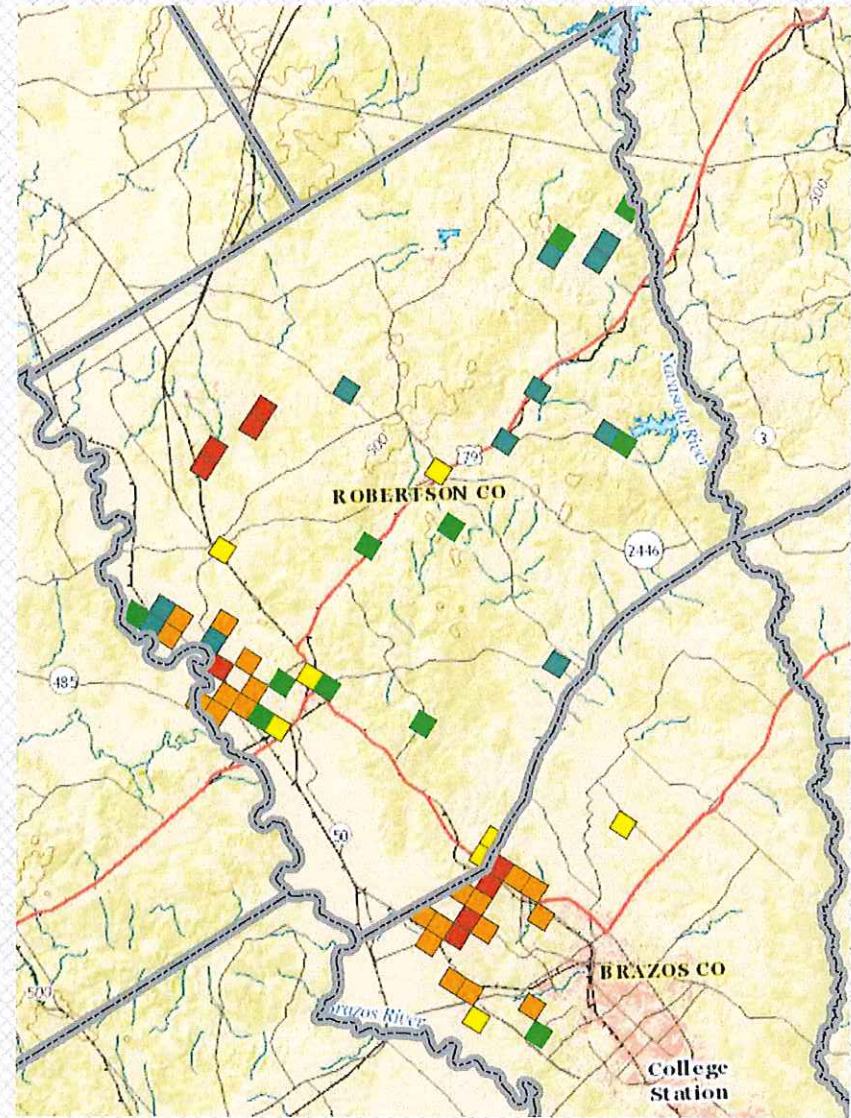
Redistribution of PS 6 pumping in BVGCD and addition of 6,000 acre feet per year of pumping in Brazos County 2011-2030

10/11/2016



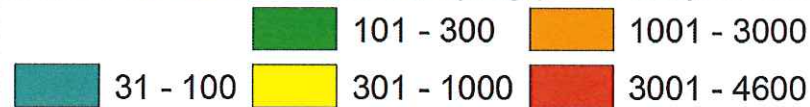


GMA 12 PS6 Well File



GMA 12 PS10 Well File

2015 Simsboro Pumping (Acre-feet)



10/11/2016

