

Brazos Valley Groundwater Conservation District



Groundwater Management Plan

ADOPTED

APPROVED BY THE TEXAS WATER DEVELOPMENT BOARD ON

_____.

OBJECTIVES AMENDED BY ACTION OF THE BOARD ON

_____.

BRAZOS VALLEY GROUNDWATER CONSERVATION DISTRICT

GROUNDWATER MANAGEMENT PLAN

TABLE OF CONTENTS

1.	MISSION STATEMENT	1
2.	TIME PERIOD FOR THIS PLAN	1
3.	STATEMENT OF GUIDING PRINCIPLES	1
4.	DISTRICT INFORMATION	2
	A. Creation	
	B. Location and Extent	
	C. Background	
	D. Authority / Regulatory Framework	
	E. Groundwater Resources of the Brazos Valley Groundwater Conservation District	
	F. Surface Water Resources of Brazos and Robertson Counties	
5.	REQUIRED ESTIMATES	10
	A. Modeled Available Groundwater	
	B. Historic Water Use Data	
	C. Annual Recharge from Precipitation	
	D. Annual Volume of Water Discharging to Surface Water	
	E. Annual Flow Into/Out and Between Aquifers	
	F. Projected Surface Water Supply	
	G. Projected Water Demands	
	H. Projected Water Supply Needs	
	I. Projected Water Management Strategies to Meet Future Supply Needs	
	J. Natural or Artificial Recharge of Groundwater Resources	

1.	Estimate of Amount of Recharge to the Groundwater Resources within the District	
2.	How Artificial Recharge of Groundwater within the District May be Increased	
6.	MANAGEMENT OF GROUNDWATER SUPPLIES17
A.	Availability Goal	
B.	Historic Use	
C.	Pumping Limits	
D.	Beneficial Use	
E.	Well Spacing	
7.	METHODOLOGY TO TRACK DISTRICT PROGRESS IN ACHIEVING MANAGEMENT GOALS.....	19
8.	ACTIONS, PROCEDURES, PERFORMANCE, AND AVOIDANCE FOR DISTRICT IMPLEMENTATION OF MANAGEMENT PLAN	19
9.	MANAGEMENT GOALS AND OBJECTIVE	20
A.	Management Goals	
1.	Implement Strategies Providing for the Most Efficient Use of Groundwater	
2.	Implement Strategies to Control and Prevent Waste of Groundwater	
3.	Implement Strategies to Address Conjunctive Surface Water Management Issues	
4.	Implement Strategies to Address Natural Resource Issues that Impact the Use and Availability of Groundwater and that are Impacted by the Use of Groundwater	
5.	Implement Strategies to Address Drought Conditions	
6.	Implement Strategies to Promote Water Conservation	
7.	Implement Strategies to Protect Water Quality	
8.	Implement Strategies to Assess Adopted Desired Future Conditions	

- B. Management Goals Determined not to be Applicable to the Brazos Valley Groundwater Conservation District**
 - 1. Controlling and Preventing Subsidence**
 - 2. Rainwater Harvesting**
 - 3. Recharge Enhancement**
 - 4. Precipitation Enhancement**
 - 5. Brush Control**

APPENDICES26

Appendix A – Definitions, Acronyms, and Abbreviations

Appendix B – Brazos/Robertson counties Datasets

Appendix B1 – Estimated Historical Water Use

Appendix B2 – Projected Surface Water Supplies

Appendix B3 – Projected Water Demands

Appendix B4 – Projected Water Supply Needs

Appendix B5 – Projected Water Management Strategies

Appendix C – Public Notices Regarding Hearing Related to Plan Adoption

Appendix D – Letters Coordinating with Regional Surface Water Management

Appendix E – Brazos Valley GCD Board of Directors Resolution Adopting Revised Management Plan

Appendix F – Minutes of Brazos Valley GCD Board of Directors Meetings Related to the Public Hearings for and Adoption of the Management Plan

Appendix G – Brazos Valley GCD Contact Information

TABLES

Table 1	Adopted Desired Future Conditions
Table 2	Metered Groundwater Use by Aquifer
Table 3	GAM Recharge Estimates
Table 4	GAM Flow Estimates

FIGURES

Figure 1	Geologic Units
Figure 2	Geologic Cross Section
Figure 3	Aquifer Outcrops Located in Brazos and Robertson Counties
Figure 4	Land Surface Elevations above Sea Level in Brazos and Robertson Counties

PAGE LEFT BLANK

1. **MISSION STATEMENT:**

The Brazos Valley Groundwater Conservation District (BVGCD) was authorized to be created by the Texas Legislature to protect and conserve the groundwater resources of Robertson and Brazos counties through local management in concert with Groundwater Management Area 12 (GMA 12). The District directs its efforts toward preventing waste of water, collecting data, promoting water conservation, protecting existing water rights, and preventing irreparable harm to the aquifers. The District's rules and management plan are based on the best available science, the laws and rules in effect, and the area's beneficial needs.

2. **TIME PERIOD FOR THIS PLAN:**

This plan becomes effective upon adoption by the BVGCD Board of Directors and subsequent approval by the Texas Water Development Board (TWDB). The Management Plan is based on a ten-year planning period; however, the plan may be revised at any time to insure that it is consistent with the applicable Regional Water plans, the State Water Plan, and additional science that may be developed. The District's Board of Directors shall re-adopt the management plan, with or without revisions, at least every five years.

3. **STATEMENT OF GUIDING PRINCIPLES:**

A vast majority of the residents of Brazos and Robertson counties rely solely on the local groundwater supplies to meet their drinking water needs and the majority of their industrial, agricultural, and livestock needs. Therefore, the local groundwater resources are vital to the Brazos Valley's growth, health, economy, and environment. The District believes this valuable resource can be managed in a reasonable manner through conservation, education, and regulation. The overall management goal will be to ensure a sustainable supply of water from the local groundwater resources while recognizing the need to balance protection of rights of private landowners with the responsibility of managing the area's groundwater resources for future generations. A basic understanding of the local aquifers and their hydrogeological properties, as well as quantification of available water supplies, is the foundation for development of prudent management strategies. The Carrizo-Wilcox Aquifer, as well as the minor aquifers in the area, must be conserved and preserved for future generations to the extent allowed by law and made possible through implementation of scientific data and information collected by the District. This Management Plan is intended as a tool for the District to provide continuity and consistency in decision making and to develop an understanding of local aquifer conditions for implementation of proper groundwater management policies.

The District has a responsibility to continually monitor aquifer conditions. As conditions warrant, this document may be modified to best serve the District in meeting its goals. At a minimum, the District Board will review and re-adopt this plan every five years.

4. DISTRICT INFORMATION

A. Creation

The BVGCD was originally created as a temporary District by the 76th Legislature in 1999 through Senate Bill 1911. The District then operated with all of the powers granted to groundwater conservation districts by Chapter 36 of the Texas Water Code (TWC), except the authority to adopt a management plan or levy an ad-valorem tax. The District was ratified by House Bill 1784 in the 77th Legislative Session in 2001 and was subsequently confirmed by the voters of both Brazos and Robertson counties in a general election held on November 5, 2002. The District was then granted full authorities afforded groundwater conservation districts by Chapter 36 of the TWC, limited only by provisions of the District's enabling legislation. The District's enabling act has been codified in Chapter 8835 of the Special Districts and Local Laws Code.

The District was created to implement proper management techniques at the local level to address groundwater needs that are vital to Brazos and Robertson counties. The District directs its efforts toward preventing waste of groundwater, collecting data, and providing education about water conservation, protecting existing water rights, and preventing irreparable harm to the aquifers. This plan provides a template for the District to follow, aiding in the development of an understanding of local aquifer conditions for implementation of proper groundwater management policies.

B. Location and Extent

The District encompasses Brazos and Robertson counties in Central Texas. The boundaries of the District are coterminous with the counties' boundaries. The District is bordered by Falls and Limestone counties to the North; Grimes and Washington counties to the South; Madison, Leon and Grimes counties to the East; and Milam and Burleson Counties to the West. The District comprises an area of approximately 1,456 square miles or 932,000 acres.

C. Background

The District's Board of Directors consists of eight (8) members appointed by their respective County Commissioners Courts. Four (4) members represent Robertson County and four (4) members represent Brazos County. The directors are appointed to represent the following interests:

Robertson County

1. One must represent municipal interests in the county.
2. One must be a bona fide agricultural producer who derives a substantial portion of his or her income from agriculture in the county.
3. One must be an employee or director of a rural water supply corporation in the county.
4. One must represent active industrial interests in the county.

Brazos County

1. One must be an employee or director of a rural water supply corporation in the county.
2. One must be a bona fide agricultural producer who derives a substantial portion of his or her income from agriculture in the county.
3. The governing body of the City of Bryan, with the approval of the Brazos County Commissioners Court, shall appoint one Director.
4. The governing body of the City of College Station, with the approval of the Brazos County Commissioners Court, shall appoint one Director.

D. Authority/Regulatory Framework

In the preparation of its management plan, the District followed all procedures and satisfied all requirements of Chapter 36 of the TWC and Chapter 356 of the TWDB rules contained in Title 30 of the Texas Administrative Code (TAC). The District exercises the powers it was granted and authorized to use by and through the special and general laws that govern it, including Chapter 1307, Acts of the 77th Legislature, Regular Session, 2001, and Chapter 36 of the TWC.

E. Groundwater Resources of the Brazos Valley Groundwater Conservation District

The five significant aquifers within the District's boundaries are the Carrizo-Wilcox, Queen City, Sparta, Yegua-Jackson, and Brazos River Alluvium. The Simsboro Sand is the most prolific water-yielding unit and is part of the Carrizo-Wilcox Aquifer. The Brazos River Alluvium, located near the Brazos River, is the next most prolific aquifer. The Queen City, Sparta, and Yegua-Jackson aquifers provide small to large pumping rates of useable groundwater to wells, as noted in Groundwater Resources of Brazos and Burleson Counties, Texas, Report 185 (Follett, 1974). A large pumping rate is defined as 200 gallons per minute or more. The vertical sequence of geologic units in descending order is listed in *Figure 1*. The Carrizo-Wilcox (Simsboro Sand) and Sparta aquifers provide water for large capacity public water supply and agricultural wells. Water from the Yegua-Jackson Aquifer is used for domestic, livestock, irrigation, industrial, and some minor retail public water supply use. Brazos River Alluvium wells are used mostly for agricultural irrigation purposes. The outcrop of the Gulf Coast aquifer occurs in the very southern part of the District providing a small amount of water for domestic and livestock wells.

The primary freshwater aquifers consist of sandy fluvial and deltaic sediments, while marine silts and clays act as aquitards separating the water-yielding zones. The Wilcox Group, from the shallowest to the deepest, consists of the Calvert Bluff, Simsboro Sand, and Hooper aquifers. No freshwater aquifers are located below the Midway, which is a thick impermeable clay located at the base of the Hooper Aquifer. The Calvert Bluff Aquifer is comprised of clay, sandy clay, shale, silt, and sand. The Simsboro Sand is generally composed of sand, while the Hooper Aquifer is made up of sand, silt, clay, and

shale. The Simsboro Sand is older than the Calvert Bluff, Carrizo, Queen City, Sparta, and Yegua-Jackson aquifers. The Carrizo Sand and Queen City Sand are separated by the Reklaw, which is a clay zone. The Cook Mountain Formation is composed of mostly clay separating the Sparta Sand and Yegua-Jackson aquifers. The Catahoula Sandstone or Catahoula Aquifer of the Gulf Coast Aquifer is composed of clay and sand in cross-bedded lenses. The Brazos River Alluvium can be found in a two to six mile wide zone of floodplain alluvial deposits along the Brazos River on the western boundary of the District. Sand, small gravel and clay compose the relatively thin Brazos River Alluvium. *Figure 2* illustrates a geologic cross section through Brazos and Robertson Counties and depicts the position, depth, thickness, and dip of the aquifers and confining units.

System	Series	Geologic Unit	Hydrogeologic Unit
Quaternary	Holocene	Flood-plain alluvium	Brazos River alluvium
	Pleistocene	Terrace deposits	
Tertiary	Miocene	Catahoula Sandstone	Gulf Coast aquifer
	Eocene	Jackson Group Whitsett Formation Manning Formation Wellborn Formation Caddell Formation	Yegua-Jackson aquifer
		Yegua Formation	
		Cook Mountain Formation	
		Sparta Sand	Sparta aquifer
		Weches Formation	
		Queen City Sand	Queen City aquifer
		Reklaw Formation	
		Carrizo Sand	Carrizo-Wilcox aquifer
		Wilcox Group Calvert Bluff Simsboro Hooper	

Figure 1: Geologic Units

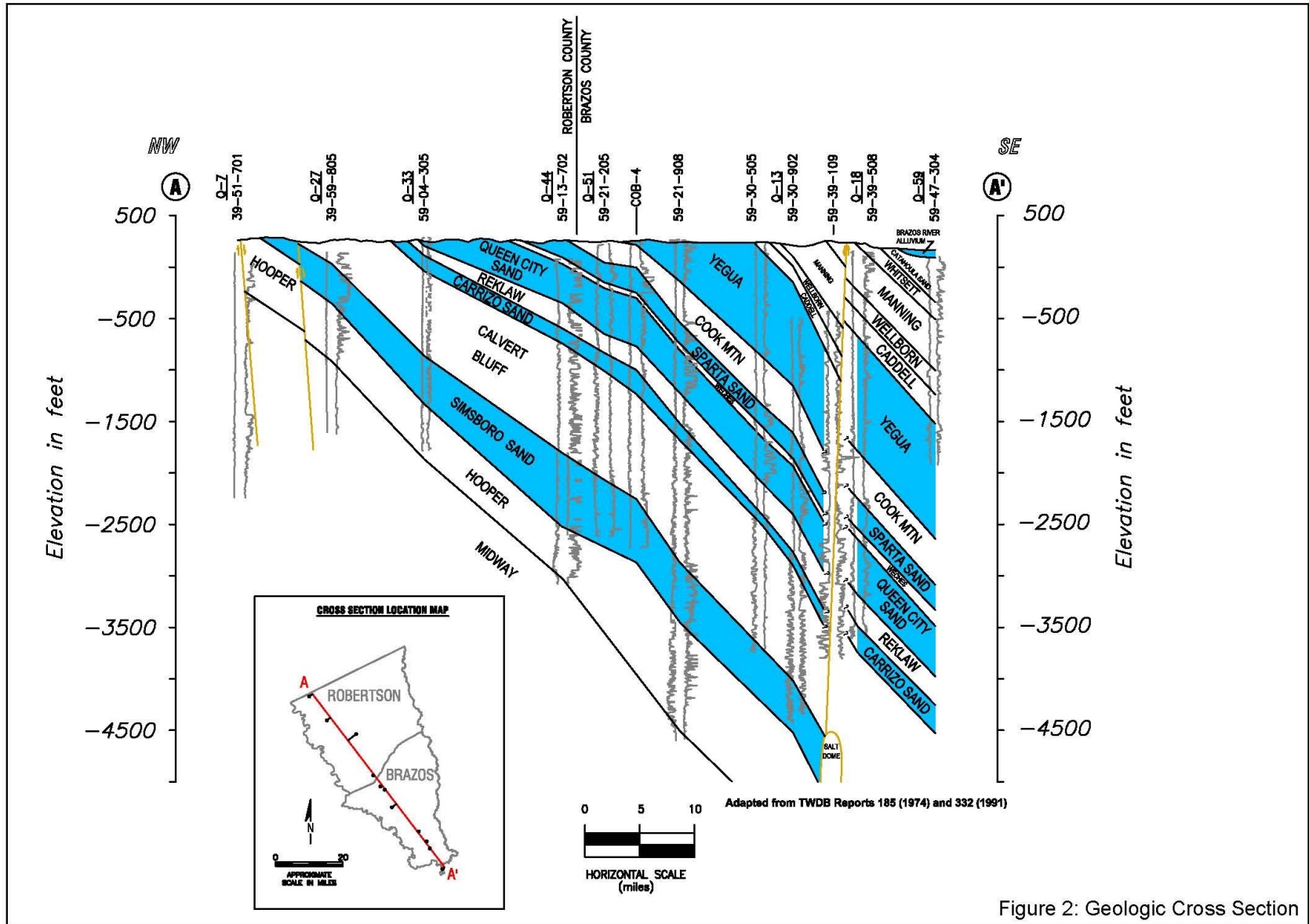
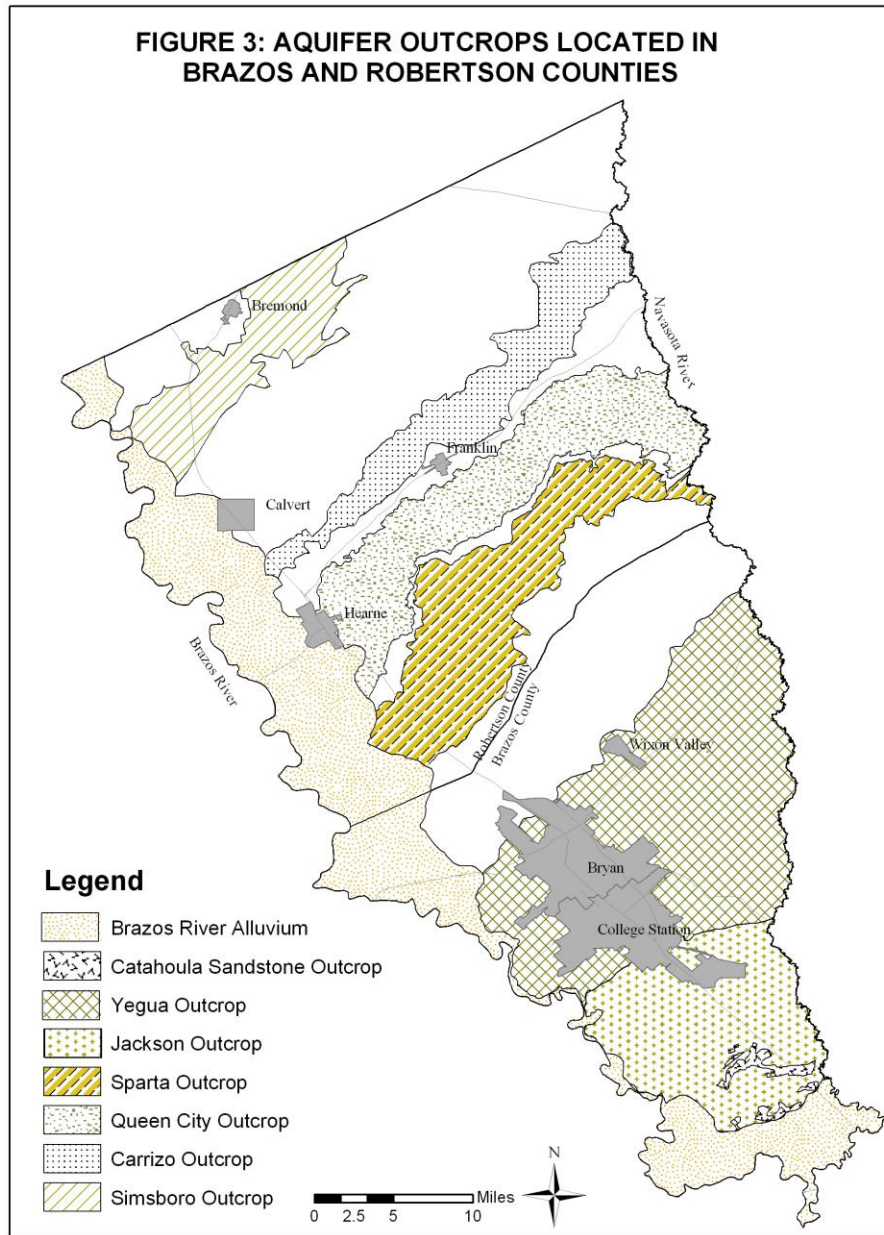


Figure 2: Geologic Cross Section

The Carrizo-Wilcox, Queen City, Sparta, and Yegua-Jackson aquifers outcrop within the District's boundaries in northeast to southwest trending belts paralleling the Gulf coastline. An aquifer outcrop map is included for Brazos and Robertson counties in *Figure 3*. The aquifer outcrops extend outside of the two counties shown on the map.



Younger aquifers outcrop closest to the coast. Older aquifers outcrop progressively further inland with increased age of the aquifer. The Catahoula Sandstone, which is the basal sand of the Gulf Coast Aquifer, occurs in a very limited area in the southern tip of Brazos County.

The general trend of the aquifers, with the exception of the Brazos River Alluvium, is to dip underground southeastward towards the Gulf Coast from their surface exposure. The aquifers dip at a maximum rate of about 110 feet per mile. Each aquifer underlies younger aquifers that have a similar dip toward the coast. A salt dome occurs in the southern part of Brazos County. The top of the salt dome has an elevation of about 4,600 feet relative to sea level. The thickness and position of the Simsboro Sand is influenced by the salt dome, but the dome occurs significantly down dip of the area where the Simsboro Sand contains potable quality groundwater.

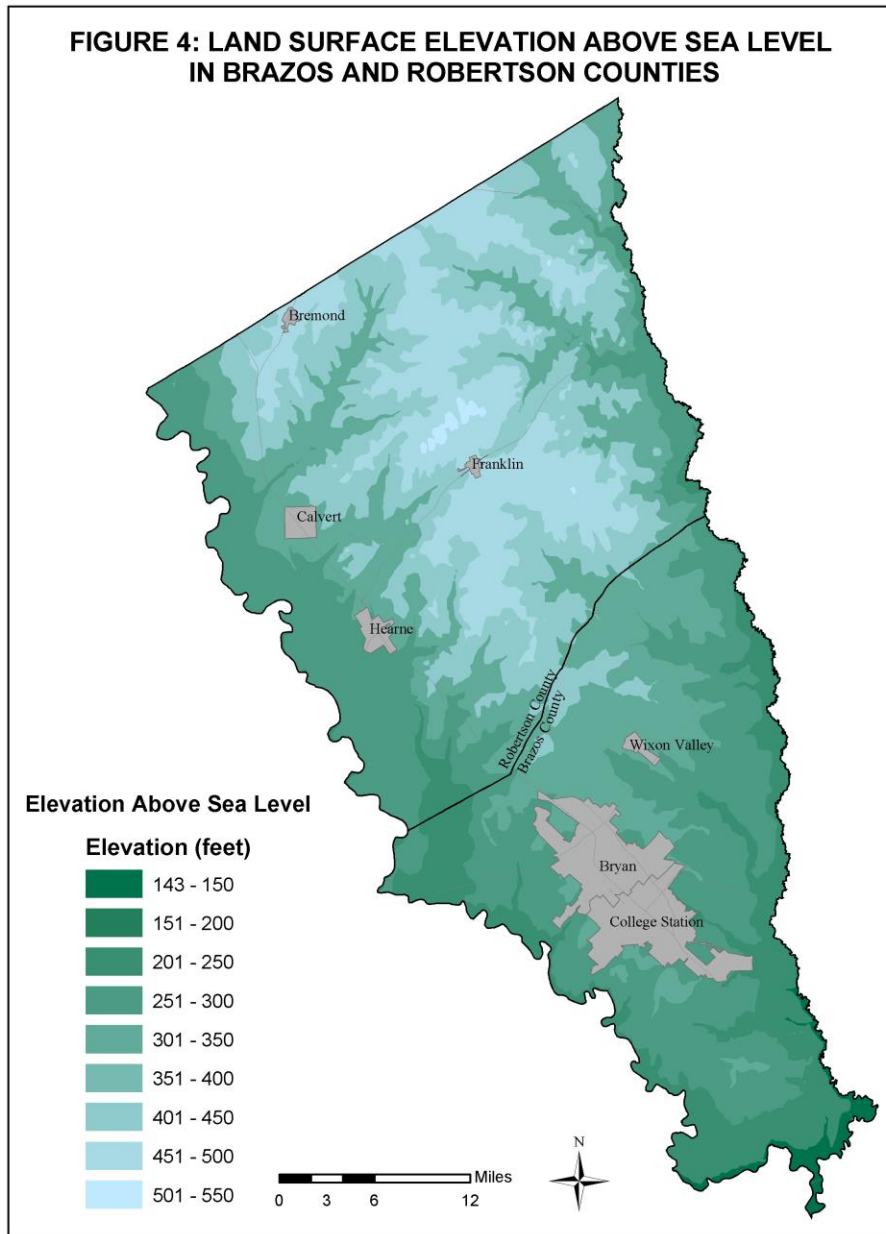
Topography and Drainage

Natural topography in Brazos and Robertson counties range from gently hilly terrain in the center of the counties to relatively flat terrain along the Brazos and Navasota river corridors. The western border of the counties is the Brazos River and the eastern is the Navasota River. The land surface elevation above sea level for Brazos and Robertson counties is shown on *Figure 4*. Altitudes in the District range from about 140 feet to 550 feet above mean sea level, with higher elevations in the center of the counties.

Numerous creeks drain runoff into the Brazos River, west of the surface water drainage divide and into the Navasota River to the east of the divide. At the southernmost tip of Brazos County, the Navasota River merges with the Brazos River. Drainages include Carters Creek, Cedar Creek, Duck Creek, Mud Creek, Peach Creek, Pin Oak Creek, Spring Creek, Thompson Creek, Walnut Creek, Wickson Creek, and the Little Brazos River. The Little Brazos River drains Walnut Creek, Mud Creek, Pin Oak Creek, and Spring Creek into the Brazos River.

Carters Creek has a stream gradient of about 10 feet per mile towards the Navasota River from its origin in central Brazos County. Cedar Creek drains from central Robertson County through Brazos County to the Navasota River and has a stream gradient of about 9 feet per mile. Duck Creek has a stream gradient of about 7 feet per mile and drains northeast Robertson County into the Navasota River. Mud Creek drains central Robertson County into the Little Brazos River and has a stream gradient of about 10 feet per mile. Peach Creek has a stream gradient of about 12 feet per mile and drains southern Brazos County into the Navasota River. Pin Oak Creek drains southern Robertson County into the Little Brazos River and has a stream gradient of about 22 feet per mile. Spring Creek has a stream gradient of about 17 feet per mile and drains southern Robertson County into the Little Brazos River. Thompson Creek drains northwest Brazos County into the Brazos River and has a stream gradient of about 11 feet per mile. Walnut Creek has a stream gradient of about 7 feet per mile and drains northwestern Robertson County into the Little Brazos River. Wickson Creek drains central Brazos County into the Navasota River and has a stream gradient of about 8 feet per mile.

**FIGURE 4: LAND SURFACE ELEVATION ABOVE SEA LEVEL
IN BRAZOS AND ROBERTSON COUNTIES**



F. Surface Water Supplies of Brazos and Robertson Counties

Brazos and Robertson counties are within the Region G Regional Water Planning Group commonly designated as Brazos G. Each regional water group supplies their specific assessments to TWDB for incorporation into the State water plan.

Projected surface water supplies are the maximum amount of surface water available from existing sources for use during drought of record conditions that is physically and legally available for use. These

are the existing surface water supply volumes that, without implementing any recommended water management strategies, could be used during a drought by water user groups located within the specified geographic area.

Surface water sources include any water resources where water is obtained directly from a surface water body. This would include rivers, streams, creeks, lakes, ponds, and tanks. In the State of Texas, all waters contained in a watercourse (rivers, natural streams and lakes, and storm water, flood water, and rainwater of every river, natural stream, canyon, ravine, depression, and watershed) are waters of the State and thus belong to the State. The State grants individuals, municipalities, water suppliers and industries the right to divert and use this water through water rights permits. Water rights are considered property rights and can be bought, sold, or transferred with state approval. These permits are issued based on the concept of prior appropriation, or “first-in-time, first-in-right.” Water rights issued by the State generally fall into two major categories: run-of-river rights and stored water rights.

In addition to the water rights permits issued by the State, individual landowners may use State waters without a specific permit for certain types of uses. The most common of these uses is domestic and livestock use. These types of water sources are generally referred to as “Local Supply Sources”. Many individuals with land along a river or stream that still have an old riparian right can also divert a reasonable amount of water for domestic and livestock uses without a permit.

5. REQUIRED ESTIMATES: 31 TAC 356.5(a)(5)(A)-(G)

A. Modeled Available Groundwater

Section 36.001 of the TWC defines modeled available groundwater (MAG) as “the amount of water that the Executive Administrator [of the TWDB] determines may be produced on an average annual basis to achieve a desired future condition established under §36.108.” Desired future condition (DFC) is defined in §36.001 of the TWC as “a quantitative description, adopted in accordance with §36.108 of the Texas Water Code, of the desired condition of the groundwater resources in a management area at one or more specified future times.” The District participates in the joint planning process in GMA 12, as defined per TWC §36.108, and established DFCs for aquifers within the District.

DFCs Adopted by GMA 12.

The District’s current DFCs for the area covered by GMA 12 are the average drawdowns listed in *Table I*. The average drawdowns are for a 70-year period beginning January, 2000 and ending December, 2069. For each of the aquifers, the DFC average drawdowns are for the area covered by each aquifer in Brazos and Robertson counties as defined by the stratigraphy used in the TWDB Groundwater Availability Models for the Central Queen City and Sparta aquifers and the Brazos River Alluvium Aquifer.

Table 1. Adopted Aquifer DFCs based on the Average Threshold that occurs between January, 2000 and December, 2069. Yegua-Jackson (2010-2069), Brazos River Alluvium (2013-2070)		Artesian Head (ft)
Sparta		12
Queen City		12
Carrizo		61
Upper Wilcox (Calvert Bluff Formation)		125
Middle Wilcox (Simsboro Formation)		295
Lower Wilcox (Hooper Formation)		207
Yegua-Jackson		Yegua – 70 Jackson – 114
Brazos Alluvium Aquifer	BVGCD Brazos and Robertson Counties Percent saturation above well depth shall average at least 30 percent for wells located north of State Highway 21 and 40 percent for wells located south of State Highway 21. If the percent saturation criteria are reached for three consecutive years then the DFC would be reached.	

A. Resolution to Adopt Desired Future Conditions, October 5, 2017, letter from Gary Westbrook, General Manager, Post Oak Savannah GCD to Jeff Walker, Executive Administrator, Texas Water Development Board (Sparta, Queen City, Carrizo, Upper Wilcox, Middle Wilcox, Lower Wilcox, Yegua., Jackson, and Brazos River Alluvium). .

The TWDB’s **MAG Estimates** based on GMA 12 adopted DFCs:

Carrizo

Modeled Available Groundwater for the Carrizo Aquifer summarized by county in GMA 12 for each decade between 2010 and 2069. Results are in ac-ft/yr.

County	2010	2020	2030	2040	2050	2060	2069
Brazos	1,196	3,717	3,724	3,737	3,761	3,763	3,763
Robertson	887	1,707	1,698	1,712	1,730	1,731	1,731

http://www.twdb.texas.gov/groundwater/docs/GAMruns/GR17-030_MAG.pdf

Calvert Bluff

Modeled Available Groundwater for the Calvert Bluff Aquifer summarized by county in GMA 12 for each decade between 2010 and 2069. Results are in ac-ft/yr.

County	2010	2020	2030	2040	2050	2060	2069
Brazos	0	0	0	0	0	0	0
Robertson	776	1,764	1,757	1,758	1,757	1,757	1,757

http://www.twdb.texas.gov/groundwater/docs/GAMruns/GR17-030_MAG.pdf

Simsboro

Modeled Available Groundwater for the Simsboro Aquifer summarized by county in GMA 12 for each decade between 2010 and 2069. Results are in ac-ft/yr.

County	2010	2020	2030	2040	2050	2060	2069
Brazos	35,086	41,115	44,120	45,681	50,208	53,404	53,404
Robertson	37,236	41,673	42,061	42,468	42,794	42,794	42,794

http://www.twdb.texas.gov/groundwater/docs/GAMruns/GR17-030_MAG.pdf

Hooper

Modeled Available Groundwater for the Hooper Aquifer summarized by county in GMA 12 for each decade between 2010 and 2069. Results are in ac-ft/yr.

County	2010	2020	2030	2040	2050	2060	2069
Brazos	0	0	0	0	0	0	0
Robertson	836	1,446	1,942	2,000	2,000	2,000	2,000

http://www.twdb.texas.gov/groundwater/docs/GAMruns/GR17-030_MAG.pdf

Queen City

Modeled Available Groundwater for the Queen City Aquifer summarized by county in GMA 12 for each decade between 2010 and 2069. Results are in ac-ft/yr.

County	2010	2020	2030	2040	2050	2060	2069
Brazos	541	836	883	887	891	891	891
Robertson	0	368	309	309	309	309	309

http://www.twdb.texas.gov/groundwater/docs/GAMruns/GR17-030_MAG.pdf

Sparta

Modeled Available Groundwater for the Sparta Aquifer summarized by county in GMA 12 for each decade between 2010 and 2069. Results are in ac-ft/yr.

County	2010	2020	2030	2040	2050	2060	2069
Brazos	3,745	5,404	6,505	7,507	8,509	8,509	8,509
Robertson	16	510	510	510	510	510	510

http://www.twdb.texas.gov/groundwater/docs/GAMruns/GR17-030_MAG.pdf

Yegua-Jackson

Modeled Available Groundwater for the Yegua-Jackson Aquifer summarized by county in GMA 12 for each decade between 2010 and 2069. Results are in ac-ft/yr.

County	2010	2020	2030	2040	2050	2060	2069
Brazos	6,863	6,856	6,854	6,854	6,854	6,854	6,854
Robertson	0	0	0	0	0	0	0

http://www.twdb.texas.gov/groundwater/docs/GAMruns/GR17-030_MAG.pdf

Brazos River Alluvium

Modeled Available Groundwater for the Brazos River Alluvium Aquifer summarized by county in GMA 12 for each decade between 2013 and 2070. Results are in ac-ft/yr.

County	2013	2020	2030	2040	2050	2060	2070
Brazos	122,785	81,581	80,311	80,081	79,976	79,913	79,872
Robertson	66,608	61,161	57,959	57,633	57,544	57,503	57,480

http://www.twdb.texas.gov/groundwater/docs/GAMruns/GR17-030_MAG.pdf

B. Historical Water Use Data

Data from the TWDB Historical Water Use Survey, included in *Appendix B1*, provides annual historical water use projections from 2000 to 2015, the most recent years of record availability. The table includes groundwater and surface water accounting for municipal, manufacturing, steam electric, irrigation, mining, and livestock usage. Data presented in *Table 2* reflects groundwater use within the District from metered wells required to report water production to the District.

The data is for the 2011-2017 period and delineated by aquifer. Exempt well use (domestic, livestock, wells used for oil and gas rig supply) are not included. Brazos River Alluvium wells have no requirement to be metered and are not a part of *Table 2*.

Table 2. Metered Groundwater Use by Aquifer (ac-ft/yr)

Aquifer	2011	2012	2013	2014	2015	2016	2017
Hooper	911	956	794	1,065	1,084	909	756
Simsboro	67,519	53,817	64,110	62,946	56,638	54,237	53,326
Calvert Bluff	20	70	80	184	160	132	272
Carrizo	1,227	810	799	852	666	762	630
Queen City	558	36	64	497	190	100	237
Sparta	4,334	3,083	3,403	5,358	4,122	4,153	4,241
Yegua-Jackson	1,659	1,408	1,298	2,533	1,664	1,565	1,510
Totals	76,228	60,180	70,548	73,435	64,524	61,858	60,972

C. Annual Recharge from Precipitation

Scope: This is the recharge to aquifers from precipitation falling on outcrop areas of the aquifers within the District. Additional recharge to aquifers occurs in areas outside the District.

Methodology: Using data from the TWDB GAM Run 18-019, the annual estimated recharge is given in acre-feet per year (ac-ft/yr) in *Table 3*.

D. Annual Volume of Water Discharging to Surface Water

Scope: This includes groundwater discharging from each aquifer within the District to springs and surface water bodies including lakes, streams, and rivers.

Methodology: Using data from the TWDB GAM Run18-019, *Table 3* summarizes the flow from each aquifer to surface water springs, lakes, streams, and rivers.

Table 3. GAM Recharge & Discharge Estimates

Management Plan Requirements	Aquifer or Confining Unit	Results ac-ft/yr
Estimated annual amount of recharge from precipitation to the District	Gulf Coast Aquifer System	40
	Yegua-Jackson Aquifer	26,512
	Sparta Aquifer	9,970
	Queen City Aquifer	6,091
	Carrizo-Wilcox Aquifer	26,906
	Brazos River Alluvium Aquifer	23,333
Estimated annual volume of water that discharges from the aquifer to springs and any surface water body including lakes, streams, and rivers	Gulf Coast Aquifer System	255
	Yegua-Jackson Aquifer	39,287
	Sparta Aquifer	1,861
	Queen City Aquifer	11,902
	Carrizo-Wilcox Aquifer	16,869
	Brazos River Alluvium Aquifer	33,859

Source: TWDB GAM Run 18-019

<http://www.twdb.texas.gov/groundwater/docs/GAMruns/GR18-019.pdf>

E. Annual Flow Into/Out and Between Aquifers

Scope: Flow into and out of the District is described as lateral flow within the aquifers between the District and adjacent counties. Flow between aquifers describes the vertical flow, or leakage, between aquifers. Flow into the District from each aquifer is provided in the *Table 4*.

Methodology: Using data from the TWDB GAM Run18-019, annual flow into/out and between aquifers was calculated. Groundwater flow results are provided in *Table 4*.

Table 4. GAM Flow Estimates

Management Plan Requirements	Aquifer or Confining Unit	Results ac-ft/yr
Estimated annual volume of flow into the District within each aquifer in the District	Gulf Coast Aquifer System	332
	Yegua-Jackson Aquifer	12,069
	Sparta Aquifer	630
	Queen City Aquifer	1,863
	Carrizo-Wilcox Aquifer	26,578
	Brazos River Alluvium Aquifer	24,447
Estimated annual volume of flow out of the District within each aquifer in the District	Gulf Coast Aquifer System	48
	Yegua-Jackson Aquifer	9,923
	Sparta Aquifer	495
	Queen City Aquifer	818
	Carrizo-Wilcox Aquifer	11,362
	Brazos River Alluvium Aquifer	20,432
Estimated net annual volume of flow between each aquifer in the District	Flow into the Catahoula unit from the Jasper Aquifer ¹	46
	Flow from the Gulf Coast Aquifer System into the Brazos River Alluvium ²	2,154
	Flow into the Yegua-Jackson Aquifer from the Catahoula and younger units	17
	Flow from the confined portion of the Yegua and Jackson groups into the Yegua-Jackson Aquifer	134
	Flow from the Yegua-Jackson Aquifer into the Brazos River Alluvium Aquifer ³	2,399
	Flow into the Sparta Aquifer from overlying units	714
	Flow from the Sparta Aquifer into the underlying Weches Confining Unit	599
	Flow from the Sparta Aquifer into the downdip brackish Sparta units	77
	Flow from the Sparta Aquifer into the Brazos River Alluvium Aquifer ⁴	3,870
	Flow unit into the Queen City Aquifer from the overlying Weches Confining Unit	209
	Flow into the Queen City Aquifer from the	148

¹ Based on the general head boundary flux from the groundwater availability model for the Yegua-Jackson Aquifer. A part of the flow between the Catahoula confining system and the Jasper Aquifer represents flow between the Gulf Coast Aquifer System and the deeper units and part represents flow into the Gulf Coast Aquifer System.

² Flow based on water budget from the groundwater availability model for the Brazos River Alluvium.

³ Flow based on water budget from the groundwater availability model for the Brazos River Alluvium.

⁴ Flow based on water budget from the groundwater availability model for the Brazos River Alluvium.

	underlying Reclaw Confining Unit	
	Flow from the Queen City Aquifer into the downdip brackish Queen City units	35
	Flow from the Queen City Aquifer into the Brazos River Alluvium Aquifer ⁵	6,288
	Flow into the Carrizo-Wilcox Aquifer from the overlying Reclaw Confining Unit	62
	Flow into the Carrizo-Wilcox Aquifer from the downdip brackish Carrizo-Wilcox units	3,477
	Flow from the Carrizo-Wilcox Aquifer into the Brazos River Alluvium Aquifer ⁶	2,290

Source: TWDB GAM Run 18-019

<http://www.twdb.texas.gov/groundwater/docs/GAMruns/GR18-019.pdf>

F. Projected Surface Water Supply

Surface water is currently allocated by the Texas Commission on Environmental Quality (TCEQ) for the use and benefit of all people of the State. Anyone seeking a new water right must submit an application to the TCEQ. The TCEQ then determines whether or not the permit will be issued and the permit conditions. The water right grants a certain quantity of water to be diverted and/or stored, a priority date, and other conditions, which may include a maximum diversion rate and in stream flow restrictions to protect existing water rights and environmental flows.

The Brazos River Authority (BRA) is the largest surface water right holder within the District, holding most of the rights to the water within the Brazos River Basin, including the water in Lake Limestone in northeast Robertson County. There are several water rights within the District consisting primarily of irrigation rights along the rivers, steam electric, and water for public supply rights for surface water. The BRA contracts raw water to various entities for long and short-term supplies for municipal, industrial, and agricultural irrigation uses.

Wellborn Special Utility District (Wellborn) is currently the only retail water supply within the District utilizing surface water in addition to groundwater, holding a permit for 4,000 ac-ft/yr.

Projected surface water supplies are described in the 2017 State Water Plan and are referenced in a table provided by the TWDB in *Appendix B2*.

G. Projected Water Demands

The Brazos G Regional Water Planning Group (BGRWPG) and local water use data indicate that total water demands for the District will be 243,783 acre-feet, by the year 2070. This number includes use from all available groundwater and surface water sources within the District.

⁵ Flow based on water budget from the groundwater availability model for the Brazos River Alluvium.

⁶ Flow based on water budget from the groundwater availability model for the Brazos River Alluvium.

Current and projected water demands by user group within each county in the District through the year 2070 are described in *Appendix B3*. These estimates are in the current 2017 State Water Plan. Projected water demands were significantly adjusted in the 2017 State Water Plan regarding agricultural and public water supply needs and addressed the District's concerns relative to actual growth and current usage by these user groups. The District will continue to work to collect accurate data about current production as well as projected demands. This information will be provided to the TWDB for inclusion in future Regional and State water plans. As indicated in the regional water plan, these projections take into account population growth, rainfall, and conservation measures to be taken by each user group.

H. Projected Water Supply Needs

Projected water supply needs, based on projections in the 2017 State Water Plan, are included in *Appendix B4*. Negative values (listed in red) indicate a projected water supply need, and additional water will be required to meet the demand.

I. Projected Water Management Strategies to Meet Future Supply Needs

Demand and supply data developed as part of the Region G planning process in 2017, District records, and GMA 12 planning efforts indicate that groundwater and surface water supplies should be adequate to meet projected future demands. There will be a need for infrastructure improvements to provide water at higher rates as water demands increase. However, if current conditions and projected needs from the State Water Plan are low, these shortages will be satisfied by further development of groundwater and surface water resources. While there seems to be sufficient water resources today to meet the 50-year planning horizon, large scale water development projects, both within the District and in neighboring districts, could alter available water supplies. Hydrogeological studies indicate that as groundwater production approaches the estimates of water demands being developed as part of the GMA 12 process, some older production wells in the Simsboro Sand may need to be replaced due to declining water levels and limited available drawdown. As part of its long-range management strategy, the District will review changes in aquifer utilization and well water level changes to help estimate appropriate future well construction and possible need for a change in the water management strategy. Some water management strategies, as given in the 2017 State Water Plan, are included in *Appendix B5*.

J. Natural or Artificial Recharge of Groundwater Resources

1. Estimate of Average Recharge to the Groundwater Resources within the District.

Aquifers within the District receive recharge from infiltration of precipitation and water from streams that cross aquifer outcrops. Estimated locations of aquifer outcrops within the District are shown on *Figure 3*. Recharge to aquifers within the District can occur outside District boundaries as an aquifer outcrop extends to the north into an adjoining county or to the east and west of the District.

Estimates of recharge for the Carrizo-Wilcox Aquifer have been in the range of 3 to 5 inches per year based on groundwater flow modeling work. TWDB GAM Run 18-019 provides estimates of recharge for the aquifer systems. Based on areas of the aquifer outcrops within Robertson County, the resulting estimate of recharge to the Carrizo-Wilcox Aquifer is about 26,906 ac-ft/yr. Additional recharge occurs outside the District that contributes to the total recharge to the aquifer system.

The Queen City Aquifer is composed of fine-grained sands with interbedded clay. The outcrop area also can contain alternating areas of sands and other areas of lower permeability silt or clay. The TWDB GAM Run 18-019, estimates the recharge to the Queen City Aquifer within the District is about 6,091 ac-ft/yr. The Queen City Aquifer outcrop occurs over about 105 square miles in Robertson County.

The Sparta Aquifer is composed of quartz sand with a small amount of interbedded clay within the aquifer thickness. Recharge to the aquifer via infiltrated precipitation and stream flow is estimated at about 9,970 ac-ft/yr in the TWDB GAM Run 18-019. The estimated outcrop of the aquifer encompasses about 100 square miles within the District.

The Yegua-Jackson Aquifer is composed of sandstone, clay, and lignite beds in some areas. The outcrop area is extensive in Brazos County as shown on Figure 3. Estimated recharge to the Yegua-Jackson aquifer is about 26,512 ac-ft/yr, based on the TWDB GAM Run 18-019. The aquifer or overlying fluvial terrace deposits outcrop over about 350 square miles in Brazos County.

The outcrop for the Catahoula sandstone of the Gulf Coast Aquifer System occurs in the very southern part of the District. In part of the outcrop area, either the Navasota River or Brazos River Alluvium has covered or washed away the surface sediments of the Catahoula sandstone. Most likely, some recharge to the buried sediments of the Gulf Coast Aquifer System occurs via leakage from the Navasota River or Brazos River Alluvium. It is estimated, based on the TWDB GAM Run 18-019 that recharge to the Gulf Coast Aquifer System is about 40 ac-ft/yr.

The Brazos River Alluvium, located in the area of the Brazos River floodplain encompasses about 140 square miles within Brazos and Robertson counties. Recharge to the Brazos River Alluvium is estimated to occur via infiltration of precipitation and stream flow. Recharge to the Brazos River Alluvium is about 23,333 ac-ft/yr based on the TWDB GAM Run 18-019.

<http://www.twdb.texas.gov/groundwater/docs/GAMruns/GR18-019.pdf>

2. How Natural or Artificial Recharge of Groundwater Within The District Might Be Increased.

Recharge enhancement may increase the amount of groundwater available from the aquifers within the District. Increasing recharge can be difficult in geologic environments that occur within the District because a large percentage of the potential recharge is rejected due to shallow water levels in the sediments of the aquifer outcrops or to the low permeability of sediments in some of the aquifer outcrops. Recharge might be enhanced by the construction of rainfall runoff retention structures on ephemeral streams. Further study of the surface geology and soil characteristics in the District may result in the identification of areas with porous soils that could provide sites for enhanced recharge or test sites for recharge investigations.

The District encourages and supports the use of Aquifer Storage and Recovery projects as a means of water conservation. This most likely would occur in the form of reuse of effluent produced by municipalities or industry.

6. MANAGEMENT OF GROUNDWATER SUPPLIES – 31 TAC 356.5(A)(6)

Groundwater conservation districts have statutorily been designated as Texas' preferred method of groundwater management through the rules developed, adopted, and promulgated by individual groundwater districts, as authorized by Chapter 36 of the TWC and the individual district's enabling act (TWC §36.0015). The BVGCD may manage groundwater supplies, in part, by regulating the spacing and production of wells, to minimize drawdown of the water table or reduction of artesian pressure, to control subsidence, to prevent interference between wells, to prevent degradation of water quality, or to prevent waste (TWC §36.116). The method of groundwater production regulation must be based on hydrogeological conditions of aquifers in the District. However, the District may preserve historic use (TWC §36.116(b)).

The BVGCD, as authorized by law, has adopted the following groundwater management strategy:

A. Availability Goal

The water availability goals of the District are expressed through the Desired Future Conditions adopted by the GMA 12 pursuant to §36.108 of the TWC.

B. Historic Use

The District shall preserve historic or existing groundwater use in the District before the effective date of the District's rules, to the maximum extent practicable. Historic use permits were issued for wells in operation prior to January 1, 2007.

C. Pumping Rate Limit

The District will regulate groundwater withdrawal through permitting efforts and by setting a maximum pumping rate limit of 3,300 gpm/well. Wells producing water from all District aquifers, excluding the Brazos River Alluvium, will be required to have land legally assigned to the well in an amount to be determined in relationship to the average annual production rate of the well.

D. Beneficial Use

The District will regulate groundwater withdrawal by setting production limits on wells based on evidence of beneficial use; and the District will continue to study various management methods including regulating groundwater production based on surface acreage which may become appropriate for effective management of groundwater withdrawal.

E. Well Spacing

The District will require well spacing on new water wells as follows:

1. A new well may not be drilled within 50 feet from the property line of any adjoining landowners;

2. Spacing of new wells completed in the Simsboro formation shall be spaced one foot per one gallon per minute of average annual production capacity from existing wells; and
3. Spacing of new wells completed in other formations (other than the Brazos River Alluvium) shall be spaced two feet per one gallon per minute of average annual production capacity from existing wells.

The District will incorporate these management strategies into its rules and will permit wells accordingly.

7. **METHODOLOGY TO TRACK DISTRICT PROGRESS IN ACHIEVING MANAGEMENT GOALS 31 TAC 356.5 (a)(6)**

An annual report will be developed by the General Manager and District staff and provided to the District's Board of Directors. The Annual Report will cover activities of the District including information on the District's performance regarding achieving the District's management goals and objectives. The Annual Report will be delivered to the District Board within 60 days following the completion of the District's fiscal year, beginning with the fiscal year that starts on January 1, 2018. A copy of the Annual Report will be kept on file and available for public inspection at the District's offices upon adoption.

8. **ACTIONS, PROCEDURES, PERFORMANCE, AND AVOIDANCE FOR DISTRICT IMPLEMENTATION OF MANAGEMENT PLAN 31 TAC 356.5 (a)(4)**

The District will act on goals and directives established in this District Management Plan. The District will use the objectives and provisions of the Management Plan as a guideline in its policy implementation and decision-making. In both its daily operations and long-term planning efforts, the District will continuously strive to comply with the initiatives and standards created by the Management Plan.

The District will amend rules in accordance with Chapter 36 of the TWC and rules will be followed and enforced. The District may amend the District rules as necessary to comply with changes to Chapter 36 of the TWC and to insure the best management of the groundwater within the District. Development and enforcement of the rules of the District will be based on the best scientific and technical evidence available to the District.

The District will encourage public cooperation and coordination in implementation of the District Management Plan. All operations and activities of the District will be performed in a manner that best encourages cooperation with appropriate state, regional, and local water entities, as well as landowners and the general public. Meetings of the District's Board of Directors will be noticed and conducted in accordance with the Texas Open Meetings Act. The District will also make available for public inspection all official documents, reports, records, and minutes of the District pursuant with the Texas Public Information Act.

For information concerning rules of the District, visit the District's website at <http://brazosvalleygcd.org/rules-and-regulations/>.

9. **MANAGEMENT GOALS AND OBJECTIVES 31 TAC 356.5(A)(1)**

Unless indicated otherwise, performance on goals will be measured annually. The Management Plan will be subject to review at least every five years and modification will be made as appropriate. Information describing programs, policies, and actions taken by the District to meet goals and objectives established by the District will be included in the Annual Report prepared by the General Manager and presented to the District's Board of Directors. Following District Board approval, the report will be made available to the County Commissioners Courts and general public.

A. **Management Goals:**

1. **Implement Strategies Providing For the Most Efficient Use of Groundwater:**

1a. **Objective** – Require all existing and new non-exempt wells constructed within the boundaries of the District to be permitted by the District and operated in accordance with District Rules. In addition, the District will encourage all exempt wells constructed within the District boundaries to be registered with the District.

➤ **Performance Standard** – The number of exempt and permitted wells registered within the District will be reported annually in the District's Annual Report submitted to the District Board of Directors.

1b. **Objective** – Regulate the production of groundwater by permitting wells within the District's boundaries based on beneficial use and in accordance with District Rules. Each year the District will accept and process applications for permitted use of groundwater in the District, in accordance with the permitting process established by District rules. The District will regulate production of groundwater from permitted wells by verification of pumpage using meters.

➤ **Performance Standard** – Number and type of applications made for permitted use of groundwater in the District, number and type of permits issued by the District, and amount of groundwater permitted will be included in the Annual Report given to the District Board of Directors.

➤ **Performance Standard** – Actual annual pumpage from each metered well within the District will be reported annually and compared to the amount permitted for that well. This information will be included in the District's Annual Report submitted to the District Board of Directors.

1c. **Objective** – Conduct ongoing monitoring of aquifers underlying the District and current groundwater production within the District, and then assess the available groundwater that can be produced from each aquifer within the District after sufficient data are collected and evaluated. Using this data and information developed for GMA 12, the District will re-evaluate availability goals as necessary and will permit wells in accordance with appropriate production goals.

- **Performance Standard** – The District will conduct appropriate studies to identify issues and criteria needed to address groundwater management needs within the District’s boundaries. Groundwater availability goals will take into consideration GMA 12 planning and research of hydrogeological and geologic characteristics of the aquifers, which may include, but not necessarily be limited to, amount of water use, water quality, and water level declines.
- **Performance Standard** – A progress report on the work of the District regarding groundwater availability will be written annually, as substantial additional data are developed. The progress report will be included in the Annual Report to the District Board of Directors.

2. Implement Strategies to Control and Prevent Waste of Groundwater:

- 2a. Objective** – Apply a water use fee to the permitted use of groundwater in the District to encourage conservation-oriented use of groundwater resources to eliminate or reduce waste.
- **Performance Standard** – Each year the District will apply a water use fee to the non-exempt permitted use of groundwater produced within the District pursuant to District rules. The amount of fees generated and amount of water produced for each type of permitted use will be a part of the Annual Report presented to the District Board of Directors.
- 2b. Objective** – Evaluate District rules annually to determine whether any amendments are necessary to decrease the amount of waste within the District.
- **Performance Standard** – The District will include a discussion of the annual evaluation of District rules, and determination of whether any amendments to the rules are necessary to prevent waste of groundwater. The evaluation will be included in the Annual Report provided to the District Board of Directors.
- 2c. Objective** – Provide information to the general public and schools within the District on wise use of water to eliminate and reduce wasteful practices.
- **Performance Standard** – The District will include a page on the District’s web-site devoted to wise use of water and providing tips to help eliminate and reduce wasteful use of groundwater. The District will provide information to local school districts including providing Texas Education Agency approved water curriculum and in-school presentations to encourage wise use of water and understanding of the significance of aquifers to District residents.

3. Implement Strategies to Address Conjunctive Surface Water Management Issues:

- 3a. Objective** – Encourage the use of surface water supplies where available, to meet the needs of specific user groups within the District.

- **Performance Standard** – The District will participate in the Region G Regional Water Planning process by attending at least one BGRWPG meeting annually and will encourage the development of surface water supplies where appropriate. This activity will be noted in the Annual Report presented to the District Board of Directors.
- 4. Implement Strategies to Address Natural Resource Issues which Impact the Use and Availability of groundwater, and which are Impacted by the Use of Groundwater**
- 4a. Objective** – Determine if there are any natural spring flows within the District that may be impacted by increased groundwater pumping.
- **Performance Standard** – Annually monitor water levels in at least two (2) wells near natural spring flows, if found, for potential impact from groundwater production. Prepare an annual assessment statement and include in the Annual Report to the District Board of Directors.
- 5. Implement Strategies to Address Drought Conditions:**
- 5a. Objective** – A District staff member will download at least one Palmer Drought Severity Index (PDSI) map monthly. The Palmer Drought Severity Index map will be used to monitor drought conditions and will be used by the Board to determine trigger conditions provided by the District’s Drought Contingency Plan.
- **Performance Standard** – District staff will make an assessment of drought conditions in the District and will brief the District Board at each regularly scheduled board meeting.
- 5b. Objective** – Require 100 percent of entities that are mandated by the State of Texas to have drought contingency plans, to submit those plans to the District or follow the District’s plan when applying for a permit from the District for water production.
- **Performance Standard** – Review 100 percent of the drought contingency plans submitted as a result of permitting, whenever permit applications for water production are received. The number of drought contingency plans required to be submitted by permitted entities to the District as part of the well permitting process and the number of drought contingency plans actually submitted to the District will be described in the Annual Report to the District Board.
- 5c. Objective** – The District drought contingency plan will be reviewed for effectiveness and needed updates at least once every three years.
- **Performance Standard** – A report summarizing findings of the review of the District drought contingency plan will be included in the Annual Report to the District Board of Directors. Additional drought information sources are available at:
<http://www.twdb.state.tx.us/data/drought/>.

6. Implement Strategies to Promote Water Conservation:

6a. Objective - Require 100 percent of water applicants requesting a permit for water production within the District to submit a water conservation plan, unless one is already on file with the District at the time of the permit application, or agree to comply with the District's adopted Water Conservation Plan.

➤ **Performance Standard** – Review 100 percent of the water conservation plans submitted as a result of permit requirements to ensure compliance with permit conditions. Number of water conservation plans required to be submitted by water permittees to the District that year as part of the well permitting process and number of water conservation plans actually submitted to the District will be reported in the Annual Report to the District Board of Directors. If the water permittee chooses to agree to follow the District's adopted Water Conservation Plan in lieu of submitting a water conservation plan, then that number will be indicated in the Annual Report to the District Board.

6b. Objective – Develop a system for measurement and evaluation of groundwater supplies.

➤ **Performance Standard** – Water level monitoring wells will be identified for Brazos River Alluvium, Yegua-Jackson, Sparta, Queen City, Carrizo, Calvert Bluff, Simsboro, and Hooper aquifers. At least two (2) wells per aquifer will be monitored on an annual basis to track changes in static water levels.

6c. Objective – Assist in funding and obtaining grant funds for the implementation of water conservation methods. Work with the appropriate state and federal agencies to facilitate bringing grant funds to various groups within the District boundaries to develop and implement water conservation methods. Work with local entities to help develop plans for obtaining grant funding from the District. The District will meet with at least one state or federal agency annually to discuss bringing water conservation methods grant funds into the District.

➤ **Performance Standard** – Number of meetings held annually with at least one state or federal agency and the number of grants for water conservation methods applied for and obtained will be included in the Annual Report to the District Board of Directors.

➤ **Performance Standard** – The District will address potential District grant funding for water conservation projects upon request by and/or submission to the District. Following proposal submission, applications will be reviewed for possible District Board approval. The number of water conservation projects submitted and the number of projects approved for grant funding by the District will be reported in the Annual Report to the District Board.

7. Implement Strategies to Protect Water Quality:

7a. Objective - Develop baseline water quality data and a system for continued evaluation of groundwater quality.

- **Performance Standard** – Develop general understanding of water quality within aquifers in the District based on TCEQ, TWDB, and other data. Coordinate with TCEQ on water quality issues.

7b. Objective – Require all water permittees that are required by the TCEQ to have well vulnerability studies prior to constructing a well, to provide evidence of the study to the District prior to construction of a well within the District.

- **Performance Standard** – Review all vulnerability studies submitted as a result of permit requirements to help ensure water quality protection.

7c. Objective – Provide information to the general public and schools within the District on the importance of protecting water quality.

- **Performance Standard** – The District will include a page on the District’s web-site devoted to water quality issues and will provide information to permittees on wellhead protection. The District will provide in-school presentations addressing aquifer contamination and aquifer protection.

8. Implement Strategies to Assess Adopted Desired Future Conditions

8a. Objective - At least once every three years, the District will evaluate well water level monitoring data and determine whether the change in water levels is in general conformance with the DFCs adopted by the District. The District will estimate total annual groundwater production for each aquifer based on the water use reports, estimated exempted use, and other relevant information, and compare these production estimates to the MAGs.

- **Performance Standard** – At least once every three years, the General Manager will report to the District Board the water level data obtained from the monitoring wells in each aquifer, the average artesian head change for each aquifer calculated from the water levels of the monitoring wells in each aquifer, a comparison of the average artesian head change for each aquifer with the DFCs for each aquifer, and the District progress in conforming with the DFCs.

- **Performance Standard** – At least once every year, the General Manager will report to the District Board the total permitted groundwater production and the estimated total annual groundwater production for each aquifer and compare these amounts to the MAGs.

B. Management Goals Determined Not to be Applicable to the Brazos Valley Groundwater Conservation District

1. Controlling and Preventing Subsidence:

The geologic formation of the aquifers within the District precludes significant subsidence from occurring due to groundwater pumping.

2. Rainwater Harvesting:

With average annual precipitation in the District about 39 inches, a goal of rainwater harvesting is not applicable at this time.

3. Recharge Enhancement:

With an average annual precipitation of about 39 inches and outcrop areas of the Carrizo-Wilcox limited to the northern part of Robertson County, this goal is not applicable at this time. The exception would be the utilization of Aquifer Storage and Recovery projects.

4. Precipitation Enhancement:

With the high amount of annual rainfall in the District, precipitation enhancement does not appear to be needed. This goal is therefore not applicable at this time.

5. Brush Control:

A significant amount of the District's area is heavily forested with other areas in improved pasture or cultivated land. Brush control, as a goal, is not applicable at this time.

APPENDIX A

DEFINITIONS, ACRONYMS and ABBREVIATIONS

Definitions

Desired Future Condition – “a quantitative description, adopted in accordance with §36.108 of the Texas Water Code, of the desired future condition of the groundwater resources in a management area at one or more specified future times” as defined in §36.001 of the Texas Water Code.

Modeled Available Groundwater – “the amount of water that the Executive Administrator (of the TWDB) determines may be produced on an annual average basis to achieve a desired future condition established under §36.108”.

Data Definitions*

Projected Water Demands*

From the 2017 State Water Plan Glossary: “**WATER DEMAND** – “Quantity of water projected to meet the overall necessities of a water user group in a specific future year.” (See 2017 State Water Plan Chapter 5 for more detail.)

Additional explanation: These are water demand volumes as projected for specific Water User Groups in the 2016 Regional Water Plans. This is NOT groundwater pumpage or demand based on any existing water source. This demand is how much water each Water User Group is projected to require in each decade over the planning horizon.

Projected Surface Water Supplies*

From the 2017 State Water Plan Glossary: “**EXISTING [surface] WATER SUPPLY** - Maximum amount of [surface] water available from existing sources for use during drought of record conditions that is physically and legally available for use.” (See 2017 State Water Plan Chapter 6 for more detail.)

Additional explanation: These are the existing surface water supply volumes that, without implementing any recommended WMSs, could be used during a drought (in each planning decade) by Water User Groups located within the specified geographic area.

Projected Water Supply Needs*

From the 2017 State Water Plan Glossary: “**NEEDS** -Projected water demands in excess of existing water supplies for a water user group or a wholesale water provider.” (See 2017 State Water Plan Chapter 7 for more detail.)

Additional explanation: These are the volumes of water that result from comparing each Water User Group’s projected existing water supplies to its projected water demands. If the volume listed is a negative number, then the Water User Group shows a projected need during a drought if they do not implement any water management strategies. If the volume listed is a positive number, then the Water User Group shows a projected surplus. Note that if a Water User Group shows a need in any decade, then they are considered to have a potential need during the planning horizon, even if they show a surplus elsewhere.

Projected Water Management Strategies*

From the 2017 State Water Plan Glossary: “**RECOMMENDED WATER MANAGEMENT STRATEGY** - Specific project or action to increase water supply or maximize existing supply to meet a specific need.” (See 2017 State Water Plan Chapter 8 for more detail.)

Additional explanation: These are the specific water management strategies (with associated water volumes) that were recommended in the 2016 Regional Water Plans.

**Terminology used by TWDB staff in providing data for ‘Estimated Historical Water Use And 2017 State Water Plan Datasets’ reports issued by TWDB.*

Acronyms

BGRWPG – Brazos G Regional Water Planning Group

BRA – Brazos River Authority

BVGCD – Brazos Valley Groundwater Conservation District

DFC(s) – Desired Future Condition(s)

MAG – Modeled Available Groundwater

GAM – Groundwater Availability Model

GCD – Groundwater Conservation District

GMA 12 – Groundwater Management Area 12

TAC – Texas Administrative Code

TWC – Texas Water Code

TWDB – Texas Water Development Board

Abbreviations

ac-ft/yr – acre feet per year

gpm – gallons per minute

APPENDIX B1

Estimated Historical Water Use

Estimated Historical Water Use And 2017 State Water Plan Datasets:

Brazos Valley Groundwater Conservation District

by Stephen Allen
Texas Water Development Board
Groundwater Division
Groundwater Technical
Assistance Section
stephen.allen@twdb.texas.gov
(512) 463-7317
April 5, 2018

GROUNDWATER MANAGEMENT PLAN DATA:

This package of water data reports (part 1 of a 2-part package of information) is being provided to groundwater conservation districts to help them meet the requirements for approval of their five-year groundwater management plan. Each report in the package addresses a specific numbered requirement in the Texas Water Development Board's groundwater management plan checklist. The checklist can be viewed and downloaded from this web address:

<http://www.twdb.texas.gov/groundwater/docs/GCD/GMPChecklist0113.pdf>

The five reports included in this part are:

1. Estimated Historical Water Use (checklist item 2)
from the TWDB Historical Water Use Survey (WUS)
2. Projected Surface Water Supplies (checklist item 6)
3. Projected Water Demands (checklist item 7)
4. Projected Water Supply Needs (checklist item 8)
5. Projected Water Management Strategies (checklist item 9)
from the 2017 Texas State Water Plan (SWP)

Part 2 of the 2-part package is the groundwater availability model (GAM) report for the District (checklist items 3 through 5). The District should have received, or will receive, this report from the Groundwater Availability Modeling Section. Questions about the GAM can be directed to Dr. Shirley Wade, shirley.wade@twdb.texas.gov, (512) 936-0883.

DISCLAIMER:

The data presented in this report represents the most up-to-date WUS and 2017 SWP data available as of 4/5/2018. Although it does not happen frequently, either of these datasets are subject to change pending the availability of more accurate WUS data or an amendment to the 2017 SWP. District personnel must review these datasets and correct any discrepancies in order to ensure approval of their groundwater management plan.

The WUS dataset can be verified at this web address:

<http://www.twdb.texas.gov/waterplanning/waterusesurvey/estimates/>

The 2017 SWP dataset can be verified by contacting Sabrina Anderson (sabrina.anderson@twdb.texas.gov or 512-936-0886).

For additional questions regarding this data, please contact Stephen Allen (stephen.allen@twdb.texas.gov or 512-463-7317) or Rima Petrossian (rima.petrossian@twdb.texas.gov or 512-936-2420).

Estimated Historical Water Use

TWDB Historical Water Use Survey (WUS) Data

Groundwater and surface water historical use estimates are currently unavailable for calendar year 2016. TWDB staff anticipates the calculation and posting of these estimates at a later date.

BRAZOS COUNTY

All values are in acre-feet

Year	Source	Municipal	Manufacturing	Mining	Steam Electric	Irrigation	Livestock	Total
2015	GW	35,131	1,310	1,096	78	17,310	426	55,351
	SW	739	0	122	387	984	791	3,023
2014	GW	34,446	1,158	1,640	91	31,734	414	69,483
	SW	397	0	182	301	2,244	769	3,893
2013	GW	34,521	1,299	611	75	45,229	407	82,142
	SW	794	0	67	159	1,751	756	3,527
2012	GW	33,826	1,422	52	114	34,442	386	70,242
	SW	943	0	4	307	2,873	716	4,843
2011	GW	38,521	1,770	134	114	38,700	486	79,725
	SW	974	0	349	307	3,702	902	6,234
2010	GW	32,667	1,666	82	123	31,834	482	66,854
	SW	0	0	211	112	3,707	896	4,926
2009	GW	33,324	1,947	75	101	28,181	414	64,042
	SW	0	0	192	104	1,434	770	2,500
2008	GW	32,573	2,066	67	126	24,019	368	59,219
	SW	0	0	173	214	1,615	683	2,685
2007	GW	28,689	2,184	1	149	25,638	502	57,163
	SW	0	0	0	472	260	932	1,664
2006	GW	31,592	2,100	1	249	25,168	550	59,660
	SW	0	0	0	426	1,043	1,022	2,491
2005	GW	42,095	2,118	1	347	28,498	480	73,539
	SW	0	0	0	441	981	891	2,313
2004	GW	27,041	2,144	1	381	18,854	494	48,915
	SW	0	0	0	0	626	740	1,366
2003	GW	25,624	2,084	1	145	9,706	497	38,057
	SW	0	0	0	434	1,361	745	2,540
2002	GW	37,539	2,001	1	52	5,555	404	45,552
	SW	13	0	0	75	1,138	606	1,832
2001	GW	28,813	94	10	248	5,394	413	34,972
	SW	47	0	0	260	1,105	619	2,031
2000	GW	30,264	137	78	844	5,660	413	37,396
	SW	221	0	0	341	1,258	619	2,439

ROBERTSON COUNTY

All values are in acre-feet

Year	Source	Municipal	Manufacturing	Mining	Steam Electric	Irrigation	Livestock	Total
2015	GW	2,434	40	3,056	5,672	44,752	807	56,761
	SW	0	0	28	22,567	1,405	1,882	25,882
2014	GW	2,741	45	156	5,317	63,183	787	72,229
	SW	0	0	65	31,713	2,765	1,836	36,379
2013	GW	2,394	43	135	4,752	85,426	788	93,538
	SW	0	0	56	30,193	3,000	1,840	35,089
2012	GW	2,387	39	213	3,952	62,023	812	69,426
	SW	0	0	77	29,327	2,051	1,895	33,350
2011	GW	2,632	44	415	5,206	93,264	1,107	102,668
	SW	0	0	6	40,660	4,586	2,583	47,835
2010	GW	2,375	51	15,185	342	76,833	1,077	95,863
	SW	0	0	114	22,059	2,780	2,514	27,467
2009	GW	2,709	88	14,821	190	62,036	484	80,328
	SW	0	0	113	6,219	7,750	1,130	15,212
2008	GW	2,847	3,882	15,691	14	62,627	508	85,569
	SW	0	85	113	154	0	1,185	1,537
2007	GW	2,663	4,619	7,734	2	56,934	396	72,348
	SW	0	136	0	0	1,691	925	2,752
2006	GW	2,948	4,613	7,676	1	58,391	487	74,116
	SW	0	136	0	0	1,163	1,137	2,436
2005	GW	3,007	3,660	7,676	0	60,246	542	75,131
	SW	0	107	0	0	9,353	1,265	10,725
2004	GW	2,702	4,151	7,475	0	40,411	750	55,489
	SW	0	305	0	0	9,266	1,126	10,697
2003	GW	2,809	4,769	7,584	0	18,425	721	34,308
	SW	0	0	0	0	9,332	1,083	10,415
2002	GW	2,910	4,802	7,554	1	23,624	613	39,504
	SW	0	0	0	0	3,222	921	4,143
2001	GW	2,845	4,692	8,291	0	20,541	590	36,959
	SW	0	174	0	0	2,801	885	3,860
2000	GW	3,060	4,480	1	0	14,535	603	22,679
	SW	0	0	0	0	2,037	905	2,942

APPENDIX B2

Projected Surface Water Supplies

Projected Surface Water Supplies

TWDB 2017 State Water Plan Data

BRAZOS COUNTY

All values are in acre-feet

RWPG	WUG	WUG Basin	Source Name	2020	2030	2040	2050	2060	2070
G	IRRIGATION, BRAZOS	BRAZOS	BRAZOS RIVER AUTHORITY MAIN STEM LAKE/RESERVOIR SYSTEM	350	349	347	346	345	344
G	LIVESTOCK, BRAZOS	BRAZOS	BRAZOS LIVESTOCK LOCAL SUPPLY	1,322	1,322	1,322	1,322	1,322	1,322
G	STEAM ELECTRIC POWER, BRAZOS	BRAZOS	DANSBY POWER PLANT/BRYAN UTILITIES LAKE/RESERVOIR	85	85	85	85	85	85
G	WELLBORN SUD	BRAZOS	BRAZOS RIVER AUTHORITY MAIN STEM LAKE/RESERVOIR SYSTEM	938	938	938	938	938	938
Sum of Projected Surface Water Supplies (acre-feet)				2,695	2,694	2,692	2,691	2,690	2,689

ROBERTSON COUNTY

All values are in acre-feet

RWPG	WUG	WUG Basin	Source Name	2020	2030	2040	2050	2060	2070
G	IRRIGATION, ROBERTSON	BRAZOS	BRAZOS RUN-OF- RIVER	535	535	535	535	535	535
G	LIVESTOCK, ROBERTSON	BRAZOS	BRAZOS LIVESTOCK LOCAL SUPPLY	1,612	1,612	1,612	1,612	1,612	1,612
G	STEAM ELECTRIC POWER, ROBERTSON	BRAZOS	BRAZOS RIVER AUTHORITY MAIN STEM LAKE/RESERVOIR SYSTEM	25,000	24,819	24,638	24,457	24,275	24,094
G	STEAM ELECTRIC POWER, ROBERTSON	BRAZOS	TWIN OAK LAKE/RESERVOIR	2,885	2,867	2,749	2,831	2,813	2,795
G	WELLBORN SUD	BRAZOS	BRAZOS RIVER AUTHORITY MAIN STEM LAKE/RESERVOIR SYSTEM	182	182	182	182	182	182
Sum of Projected Surface Water Supplies (acre-feet)				30,214	30,015	29,716	29,617	29,417	29,218

APPENDIX B3

Projected Water Demands

Projected Water Demands

TWDB 2017 State Water Plan Data

Please note that the demand numbers presented here include the plumbing code savings found in the Regional and State Water Plans.

BRAZOS COUNTY

All values are in acre-feet

RWPG	WUG	WUG Basin	2020	2030	2040	2050	2060	2070
G	BRYAN	BRAZOS	15,696	16,243	20,342	23,492	26,926	30,652
G	COLLEGE STATION	BRAZOS	19,178	24,320	25,726	29,619	33,927	38,728
G	COUNTY-OTHER, BRAZOS	BRAZOS	904	590	551	629	752	947
G	IRRIGATION, BRAZOS	BRAZOS	26,050	24,791	23,594	22,459	21,374	20,438
G	LIVESTOCK, BRAZOS	BRAZOS	1,322	1,322	1,322	1,322	1,322	1,322
G	MANUFACTURING, BRAZOS	BRAZOS	2,456	2,779	3,109	3,405	3,694	4,008
G	MINING, BRAZOS	BRAZOS	1,088	1,610	1,433	1,144	923	814
G	STEAM ELECTRIC POWER, BRAZOS	BRAZOS	503	406	460	312	405	384
G	TEXAS A & M UNIVERSITY	BRAZOS	6,322	6,350	6,309	6,292	6,289	6,288
G	WELLBORN SUD	BRAZOS	1,837	2,070	2,318	2,634	2,982	3,368
G	WICKSON CREEK SUD	BRAZOS	991	1,155	1,332	1,558	1,809	2,088
Sum of Projected Water Demands (acre-feet)			76,347	81,636	86,496	92,866	100,403	109,037

ROBERTSON COUNTY

All values are in acre-feet

RWPG	WUG	WUG Basin	2020	2030	2040	2050	2060	2070
G	BREMOND	BRAZOS	189	201	213	229	244	260
G	CALVERT	BRAZOS	190	183	180	180	179	179
G	COUNTY-OTHER, ROBERTSON	BRAZOS	439	512	589	665	734	796
G	FRANKLIN	BRAZOS	256	272	288	307	328	348
G	HEARNE	BRAZOS	757	734	715	713	711	711
G	IRRIGATION, ROBERTSON	BRAZOS	63,420	61,607	59,841	58,127	56,460	55,124
G	LIVESTOCK, ROBERTSON	BRAZOS	1,612	1,612	1,612	1,612	1,612	1,612
G	MANUFACTURING, ROBERTSON	BRAZOS	133	154	176	197	214	232
G	MINING, ROBERTSON	BRAZOS	9,913	11,753	13,768	16,222	19,217	22,940
G	ROBERTSON COUNTY WSC	BRAZOS	246	256	267	282	300	319
G	STEAM ELECTRIC POWER, ROBERTSON	BRAZOS	17,461	30,380	35,512	46,984	49,133	51,381
G	TRI-COUNTY SUD	BRAZOS	115	121	128	136	145	154
G	WELLBORN SUD	BRAZOS	356	401	450	511	578	653
G	WICKSON CREEK SUD	BRAZOS	28	30	31	33	35	37
Sum of Projected Water Demands (acre-feet)			95,115	108,216	113,770	126,198	129,890	134,746

APPENDIX B4

Projected Water Supply Needs

Projected Water Supply Needs

TWDB 2017 State Water Plan Data

Negative values (in red) reflect a projected water supply need, positive values a surplus.

BRAZOS COUNTY

All values are in acre-feet

RWPG	WUG	WUG Basin	2020	2030	2040	2050	2060	2070
G	BRYAN	BRAZOS	-3,335	-1,269	-5,533	-11,875	-18,790	-26,578
G	COLLEGE STATION	BRAZOS	-4,973	-8,024	-7,372	-7,673	-8,085	-8,401
G	COUNTY-OTHER, BRAZOS	BRAZOS	39	379	424	346	223	28
G	IRRIGATION, BRAZOS	BRAZOS	-10,934	-9,669	-8,474	-7,340	-6,256	-5,321
G	LIVESTOCK, BRAZOS	BRAZOS	0	0	0	0	0	0
G	MANUFACTURING, BRAZOS	BRAZOS	-1,800	-886	-1,219	-1,513	-1,802	-2,116
G	MINING, BRAZOS	BRAZOS	-1,088	-1,610	-1,433	-1,144	-923	-814
G	STEAM ELECTRIC POWER, BRAZOS	BRAZOS	-271	-151	-197	-49	-142	-121
G	TEXAS A & M UNIVERSITY	BRAZOS	5,253	6,760	7,323	7,340	7,343	7,344
G	WELLBORN SUD	BRAZOS	377	90	-300	-846	-1,448	-2,114
G	WICKSON CREEK SUD	BRAZOS	1,535	1,378	1,154	892	604	301
Sum of Projected Water Supply Needs (acre-feet)			-22,401	-21,609	-24,528	-30,440	-37,446	-45,465

ROBERTSON COUNTY

All values are in acre-feet

RWPG	WUG	WUG Basin	2020	2030	2040	2050	2060	2070
G	BREMOND	BRAZOS	202	190	178	162	147	131
G	CALVERT	BRAZOS	339	346	349	349	350	350
G	COUNTY-OTHER, ROBERTSON	BRAZOS	318	245	168	92	23	-39
G	FRANKLIN	BRAZOS	372	356	340	321	300	280
G	HEARNE	BRAZOS	2,085	2,108	2,127	2,129	2,131	2,131
G	IRRIGATION, ROBERTSON	BRAZOS	-52,989	-51,076	-49,210	-47,448	-45,781	-44,445
G	LIVESTOCK, ROBERTSON	BRAZOS	0	0	0	0	0	0
G	MANUFACTURING, ROBERTSON	BRAZOS	118	97	75	54	37	19
G	MINING, ROBERTSON	BRAZOS	292	-1,548	-3,563	-6,017	-9,012	-12,735
G	ROBERTSON COUNTY WSC	BRAZOS	265	255	244	229	211	192
G	STEAM ELECTRIC POWER, ROBERTSON	BRAZOS	16,438	3,320	-2,111	-13,682	-16,031	-18,478
G	TRI-COUNTY SUD	BRAZOS	-15	-18	-19	-19	-26	-31
G	WELLBORN SUD	BRAZOS	73	17	-58	-164	-280	-410
G	WICKSON CREEK SUD	BRAZOS	44	36	27	19	11	5
Sum of Projected Water Supply Needs (acre-feet)			-53,004	-52,642	-54,961	-67,330	-71,130	-76,138

APPENDIX B5

Projected Water Management Strategies

Projected Water Management Strategies

TWDB 2017 State Water Plan Data

BRAZOS COUNTY

WUG, Basin (RWPG)

All values are in acre-feet

Water Management Strategy	Source Name [Origin]	2020	2030	2040	2050	2060	2070
BRYAN, BRAZOS (G)							
CARRIZO AQUIFER DEVELOPMENT	CARRIZO-WILCOX AQUIFER [BRAZOS]	0	0	0	5,100	5,100	5,100
MUNICIPAL WATER CONSERVATION (URBAN) - BRYAN	DEMAND REDUCTION [BRAZOS]	493	1,573	1,616	1,697	1,899	2,143
REUSE- BRYAN (OPTION 2)	DIRECT REUSE [BRAZOS]	2,419	2,419	2,419	2,419	2,419	2,419
REUSE- MIRAMONT	DIRECT REUSE [BRAZOS]	600	600	600	600	600	600
SIMSBORO - BRAZOS COUNTY ASR	SIMSBORO AQUIFER ASR [BRAZOS]	2,841	2,841	3,917	5,581	12,294	19,839
		6,353	7,433	8,552	15,397	22,312	30,101
COLLEGE STATION, BRAZOS (G)							
MUNICIPAL WATER CONSERVATION (URBAN) - COLLEGE STATION	DEMAND REDUCTION [BRAZOS]	679	2,585	3,465	3,823	4,332	4,926
YEGUA-JACKSON AQUIFER DEVELOPMENT	YEGUA-JACKSON AQUIFER [BRAZOS]	4,452	5,565	5,565	5,565	5,565	5,565
		5,131	8,150	9,030	9,388	9,897	10,491
IRRIGATION, BRAZOS, BRAZOS (G)							
BRA SYSTEM OPERATION MAIN STEM	BRAZOS RIVER AUTHORITY MAIN STEM LAKE/RESERVOIR SYSTEM [RESERVOIR]	10,200	8,500	6,900	5,800	4,800	3,900
IRRIGATION WATER CONSERVATION	DEMAND REDUCTION [BRAZOS]	782	1,240	1,652	1,572	1,496	1,431
		10,982	9,740	8,552	7,372	6,296	5,331
MANUFACTURING, BRAZOS, BRAZOS (G)							
GULF COAST AQUIFER DEVELOPMENT	GULF COAST AQUIFER [BRAZOS]	530	530	530	530	530	530
INDUSTRIAL WATER CONSERVATION	DEMAND REDUCTION [BRAZOS]	74	139	218	238	259	281
TEXAS A&M REDUCTION TO BRAZOS MANUFACTURING	CARRIZO-WILCOX AQUIFER [BRAZOS]	1,200	300	500	800	1,100	1,400
		1,804	969	1,248	1,568	1,889	2,211
MINING, BRAZOS, BRAZOS (G)							
INDUSTRIAL WATER CONSERVATION	DEMAND REDUCTION [BRAZOS]	33	81	100	80	65	57
		33	81	100	80	65	57
STEAM ELECTRIC POWER, BRAZOS, BRAZOS(G)							
	DEMAND REDUCTION [BRAZOS]						
		15	20	32	22	28	27

Projected Water Management Strategies

TWDB 2017 State Water Plan Data

WUG, Basin (RWPG)

All values are in acre-feet

Water Management Strategy	Source Name [Origin]	2020	2030	2040	2050	2060	2070
REUSE- BRYAN (OPTION 1)	DIRECT REUSE [BRAZOS]	256	131	165	27	114	94
		271	151	197	49	142	121

TEXAS A & M UNIVERSITY, BRAZOS (G)

MUNICIPAL WATER CONSERVATION (SUBURBAN) - TEXAS A & M UNIVERSITY	DEMAND REDUCTION [BRAZOS]	416	942	1,418	1,869	2,289	2,670
		416	942	1,418	1,869	2,289	2,670

WELLBORN SUD, BRAZOS (G)

BRA SYSTEM OPERATION MAIN STEM	BRAZOS RIVER AUTHORITY MAIN STEM LAKE/RESERVOIR SYSTEM [RESERVOIR]	0	0	1,876	1,876	1,876	1,876
MUNICIPAL WATER CONSERVATION (URBAN) - WELLBORN SUD	DEMAND REDUCTION [BRAZOS]	65	234	425	472	530	597
		65	234	2,301	2,348	2,406	2,473
Sum of Projected Water Management Strategies (acre-feet)		25,055	27,700	31,398	38,071	45,296	53,455

ROBERTSON COUNTY

WUG, Basin (RWPG)

All values are in acre-feet

Water Management Strategy	Source Name [Origin]	2020	2030	2040	2050	2060	2070
BREMOND, BRAZOS (G)							
MUNICIPAL WATER CONSERVATION (SUBURBAN) - BREMOND	DEMAND REDUCTION [ROBERTSON]	6	20	22	23	23	25
		6	20	22	23	23	25

CALVERT, BRAZOS (G)

MUNICIPAL WATER CONSERVATION (SUBURBAN) - CALVERT	DEMAND REDUCTION [ROBERTSON]	3	0	0	0	0	0
		3	0	0	0	0	0

COUNTY-OTHER, ROBERTSON, BRAZOS (G)

CARRIZO AQUIFER DEVELOPMENT	CARRIZO-WILCOX AQUIFER [ROBERTSON]	0	0	0	0	0	81
		0	0	0	0	0	81

HEARNE, BRAZOS (G)

MUNICIPAL WATER CONSERVATION (SUBURBAN) - HEARNE	DEMAND REDUCTION [ROBERTSON]	22	35	16	14	12	12
		22	35	16	14	12	12

Projected Water Management Strategies

TWDB 2017 State Water Plan Data

WUG, Basin (RWPG)

All values are in acre-feet

Water Management Strategy	Source Name [Origin]	2020	2030	2040	2050	2060	2070
IRRIGATION, ROBERTSON, BRAZOS (G)							
CARRIZO AQUIFER DEVELOPMENT	CARRIZO-WILCOX AQUIFER [ROBERTSON]	15,764	16,143	16,222	15,172	8,912	1,179
IRRIGATION WATER CONSERVATION	DEMAND REDUCTION [ROBERTSON]	1,903	3,080	4,189	4,069	3,952	3,859
		17,667	19,223	20,411	19,241	12,864	5,038
MINING, ROBERTSON, BRAZOS (G)							
INDUSTRIAL WATER CONSERVATION	DEMAND REDUCTION [ROBERTSON]	0	588	964	1,136	1,345	1,606
		0	588	964	1,136	1,345	1,606
STEAM ELECTRIC POWER, ROBERTSON, BRAZOS (G)							
BRA SYSTEM OPERATION MAIN STEM	BRAZOS RIVER AUTHORITY MAIN STEM LAKE/RESERVOIR SYSTEM [RESERVOIR]	0	0	0	2,000	4,000	6,000
INDUSTRIAL WATER CONSERVATION	DEMAND REDUCTION [ROBERTSON]	0	0	2,486	3,289	3,439	3,597
PURCHASE FROM WALNUT CREEK MINE-REUSE	DIRECT REUSE [ROBERTSON]	0	0	0	9,000	9,000	9,000
		0	0	2,486	14,289	16,439	18,597
TRI-COUNTY SUD, BRAZOS (G)							
CARRIZO AQUIFER DEVELOPMENT	CARRIZO-WILCOX AQUIFER [LIMESTONE]	37	39	41	43	45	46
		37	39	41	43	45	46
WELLBORN SUD, BRAZOS (G)							
BRA SYSTEM OPERATION MAIN STEM	BRAZOS RIVER AUTHORITY MAIN STEM LAKE/RESERVOIR SYSTEM [RESERVOIR]	0	0	364	364	364	364
MUNICIPAL WATER CONSERVATION (URBAN) - WELLBORN SUD	DEMAND REDUCTION [ROBERTSON]	13	45	83	91	103	116
		13	45	447	455	467	480
Sum of Projected Water Management Strategies (acre-feet)		17,748	19,950	24,387	35,201	31,195	25,885

APPENDIX C

Public Notices Regarding Hearing
Related to Plan Adoption



Public Hearing

**BRAZOS VALLEY GROUNDWATER
CONSERVATION DISTRICT
112 West Third Street
Hearne, Texas**

July 17, 2014 at 3:00 p.m.

Public Hearing on the Brazos Valley Groundwater Conservation District's proposed groundwater Management Plan update, as required by chapter 36.1071 of the Texas Water Code.

Copies of the District Management Plan may be obtained at the District office.

Signed this 14th, day of July, 2014

A handwritten signature in black ink, appearing to read 'Alan M. Day', written over a horizontal line.

Alan M. Day
General Manager

The Board of Directors may meet in closed session, pursuant to the Texas Open Meetings Act, Texas Government Code §§ 551.071-551.076, to:

- (1) consult with attorney;
- (2) deliberate regarding the purchase, exchange, lease, or value of real property if deliberation in an open meeting would have a detrimental effect on the position of the District in negotiations with a third person;
- (3) deliberate a negotiated contract for a prospective gift or donation to the District if deliberation in an open meeting would have a detrimental effect on the position of the District in negotiations with a third person;
- (4) to deliberate the appointment, employment, evaluation, reassignment, duties, discipline or dismissal of a Board member or District employee;
- (5) to receive information from employees or question employees, but not deliberate public business or agency policy that affects public business; and
- (6) to deliberate the deployment or specific occasions for implementation of security personnel or devices.

The Board may also meet in open session on these matters as required by the Texas Open Meetings Act, Texas Government Code § 551.102.

**** Agenda items may be taken out of order at the discretion of the Board Chairman**

APPENDIX D

Letters Coordinating with Regional
Surface Water Management



BRAZOS VALLEY GROUNDWATER CONSERVATION DISTRICT

P.O. Box 528 · HEARNE, TX 77859 · (979)279-9350 · FAX: (979)279-0035
WWW.BRAZOSVALLEYGCD.ORG

October 13, 2014

Trey Buzbee
Brazos River Authority
P.O. Box 7555
Waco, TX 76714

Dear Trey,

The Brazos Valley Groundwater Conservation District is currently updating its Management Plan as required by Chapter 36 of the Texas Water Code. One of the specific objectives contained in the plan addresses conjunctive use of surface and groundwater assets.

Enclosed is a copy of the body of the plan. Please review and make any suggestions or comments to the District office by November 1, 2014. The adoption of the draft will be an action item on the November 13, 2014 Regular Board Meeting.

If you have any questions concerning the plan, please feel free to contact me at your convenience.

Best regards,

Alan M. Day
General Manager
979-279-9350 (office)
817-774-6412 (cell)
aday@brazosvalleygcd.org



BRAZOS VALLEY GROUNDWATER CONSERVATION DISTRICT

P.O. Box 528 · HEARNE, TX 77859 · (979)279-9350 · FAX: (979)279-0035
WWW.BRAZOSVALLEYGCD.ORG

October 13, 2014

Stephen Cast, General Manager
Wellborn Special Utility District
P. O. Box 250
Wellborn, Texas 77881

Dear Stephen,

The Brazos Valley Groundwater Conservation District is currently updating its Management Plan as required by Chapter 36 of the Texas Water Code. One of the specific objectives contained in the plan addresses conjunctive use of surface and groundwater assets.

Enclosed is a copy of the body of the plan. Please review and make any suggestions or comments to the District office by November 1, 2014. The adoption of the draft will be an action item on the November 13, 2014 Regular Board Meeting.

If you have any questions concerning the plan, please feel free to contact me at your convenience.

Best regards,

Alan M. Day
General Manager
979-279-9350 (office)
817-774-6412 (cell)
aday@brazosvalleygcd.org

APPENDIX E

Brazos Valley GCD Board of Directors Resolution
Adopting Revised Management Plan

APPENDIX F

Minutes of Brazos Valley GCD Board of Directors
Meetings Related to Public Hearings for and
Adoption of the Management Plan

APPENDIX G

Brazos Valley GCD Contact Information

BRAZOS VALLEY GROUNDWATER CONSERVATION DISTRICT

District Staff

Alan M. Day, General Manager
Cynthia Lopez, Office Manager
Megan Haas, Educational & Outreach Coordinator

Physical Address:

112 W. 3rd Street
Hearne, Texas 77859

Mailing Address:

P.O. Box 528
Hearne, Texas 77859

Telephone Numbers:

979-279-9350 (office)
979-279-0035 (fax)

Email Address:

clopez@brazosvalleygcd.org

Website Address:

<http://brazosvalleygcd.org/>