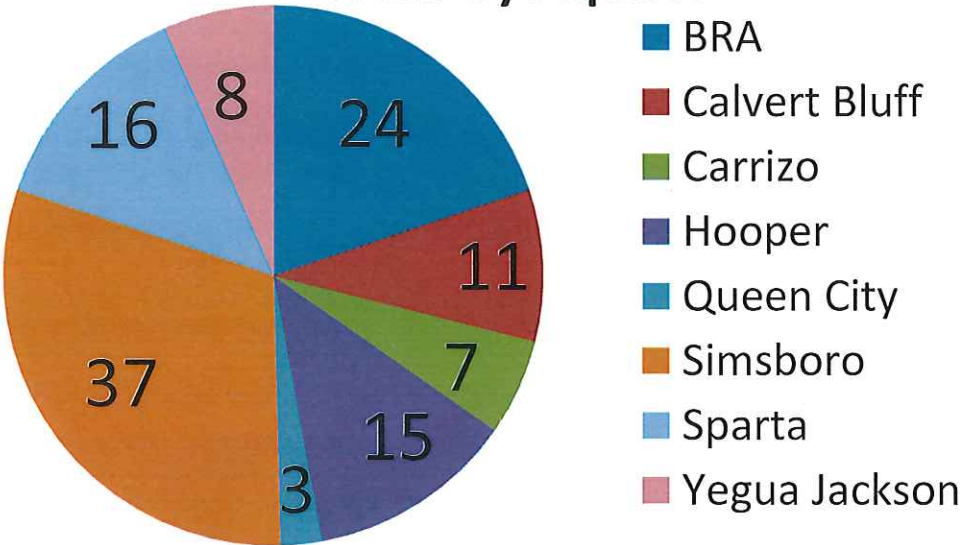


118 Wells Measured from January-March

Aquifer	Measured Wells	Total Wells
BRA	24	25
Calvert Bluff	11	11
Carrizo	7	7
Hooper	15	18
Queen City	3	3
Simsboro	37	52
Sparta	16	19
Yegua Jackson	8	9
	118	144

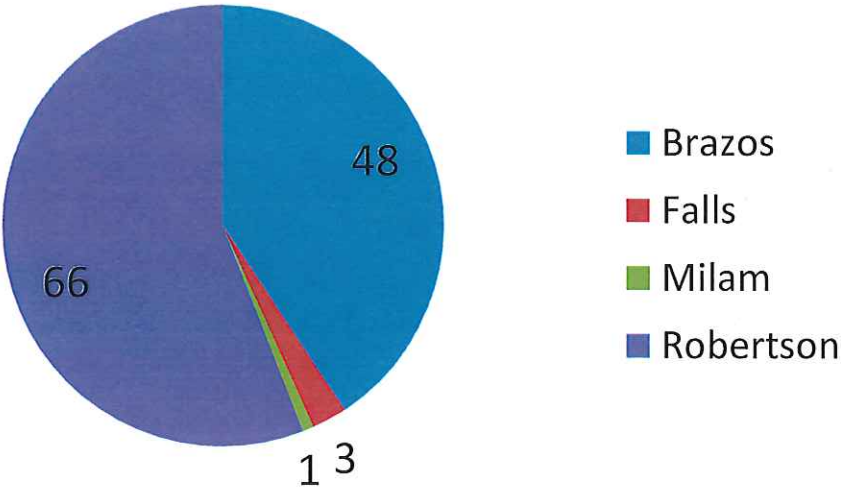
118 Wells Measured from January-March

Wells by Aquifer



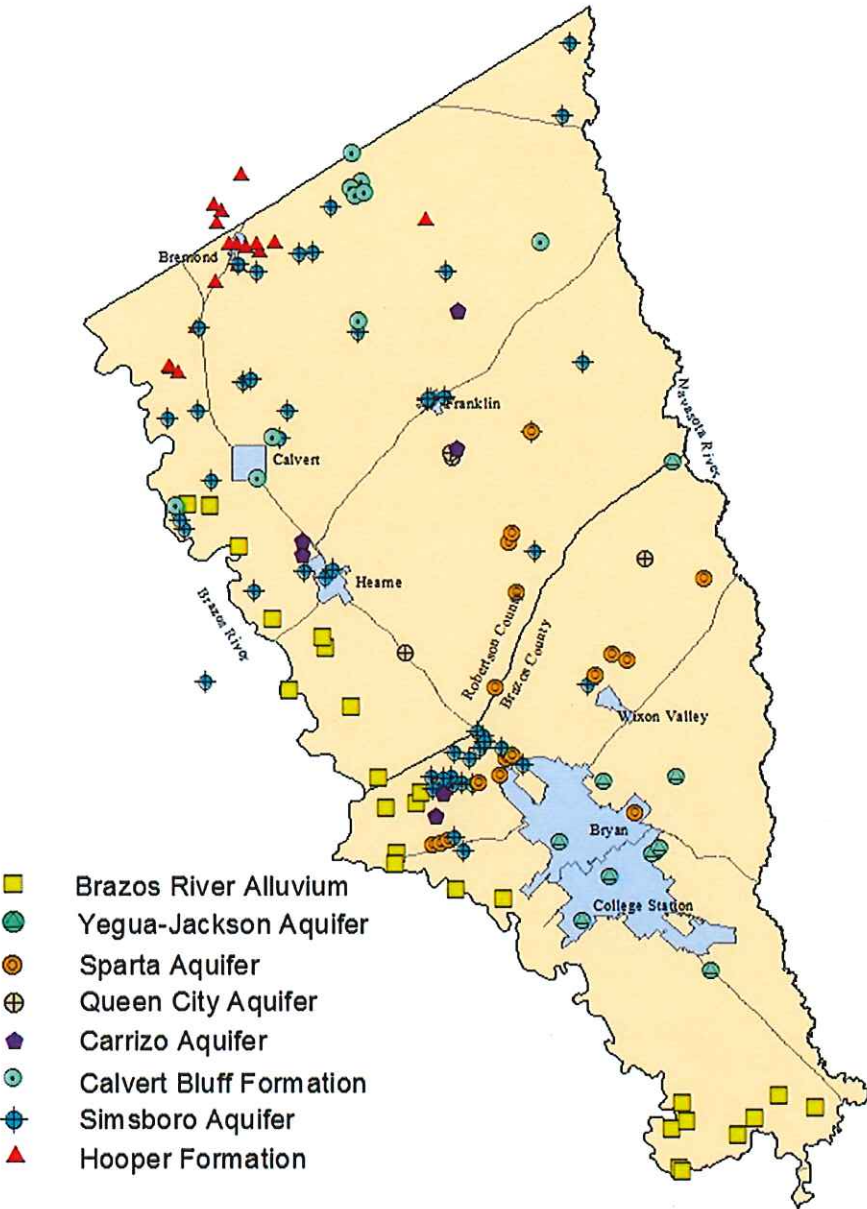
Aquifer	Measured Wells
BRA	24
Calvert Bluff	11
Carrizo	7
Hooper	15
Queen City	3
Simsboro	37
Sparta	16
Yegua Jackson	8

Wells by County



County	Wells
Brazos	48
Falls	3
Milam	1
Robertson	66

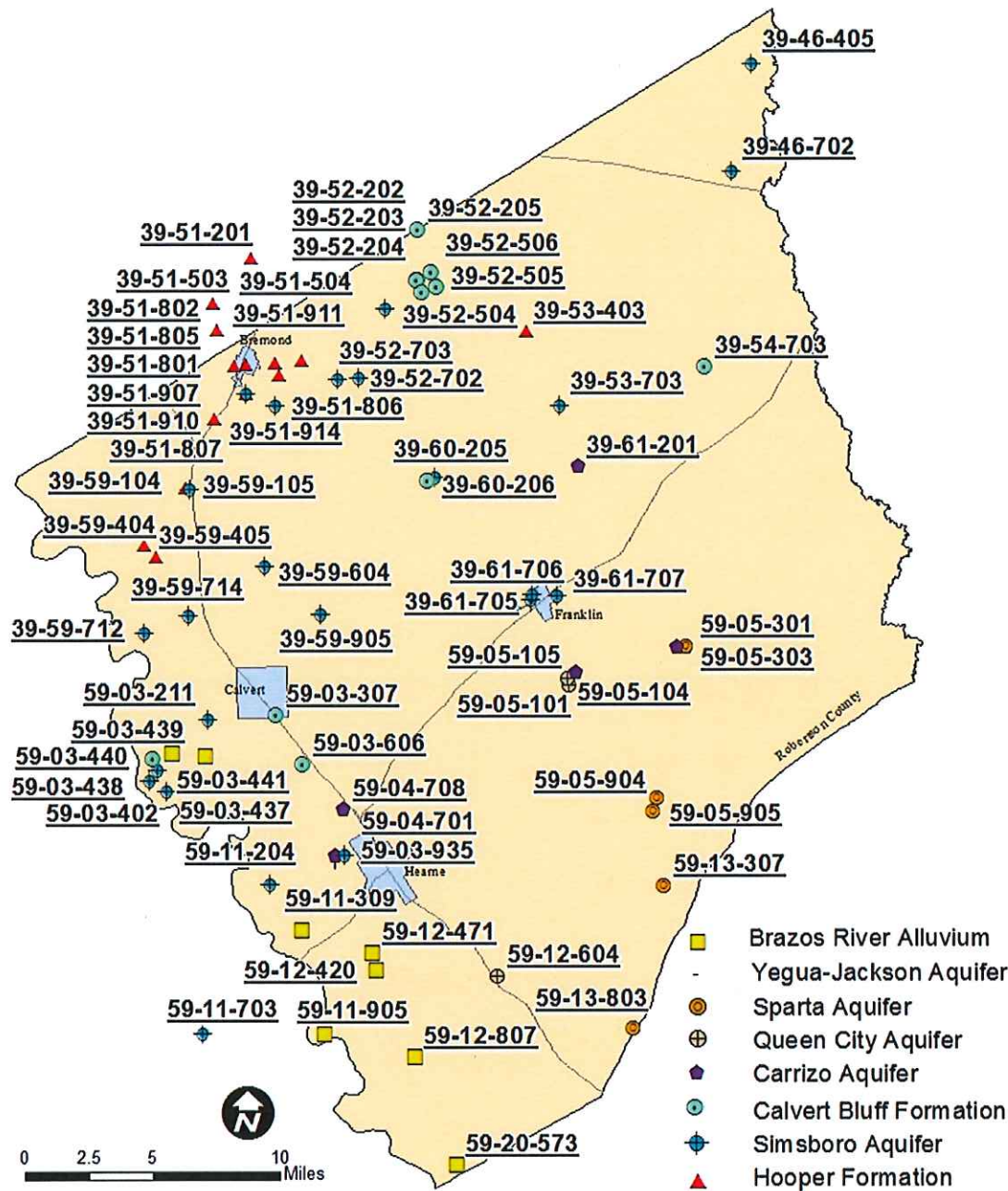
EXISTING OBSERVATION WELLS



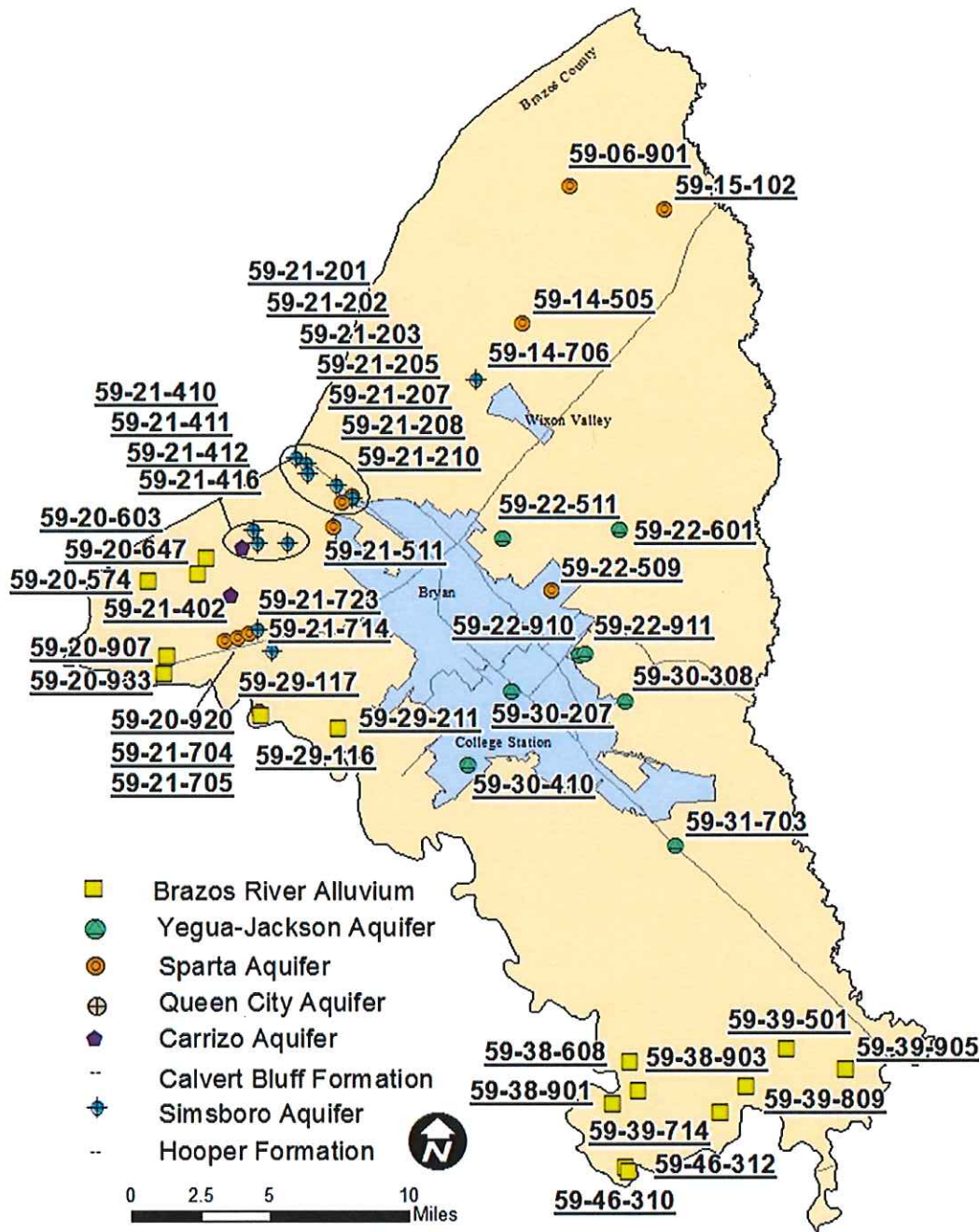
- Brazos River Alluvium
- Yegua-Jackson Aquifer
- Sparta Aquifer
- ⊕ Queen City Aquifer
- ◆ Carrizo Aquifer
- ⊕ Calvert Bluff Formation
- ⊕ Simsboro Aquifer
- ▲ Hooper Formation



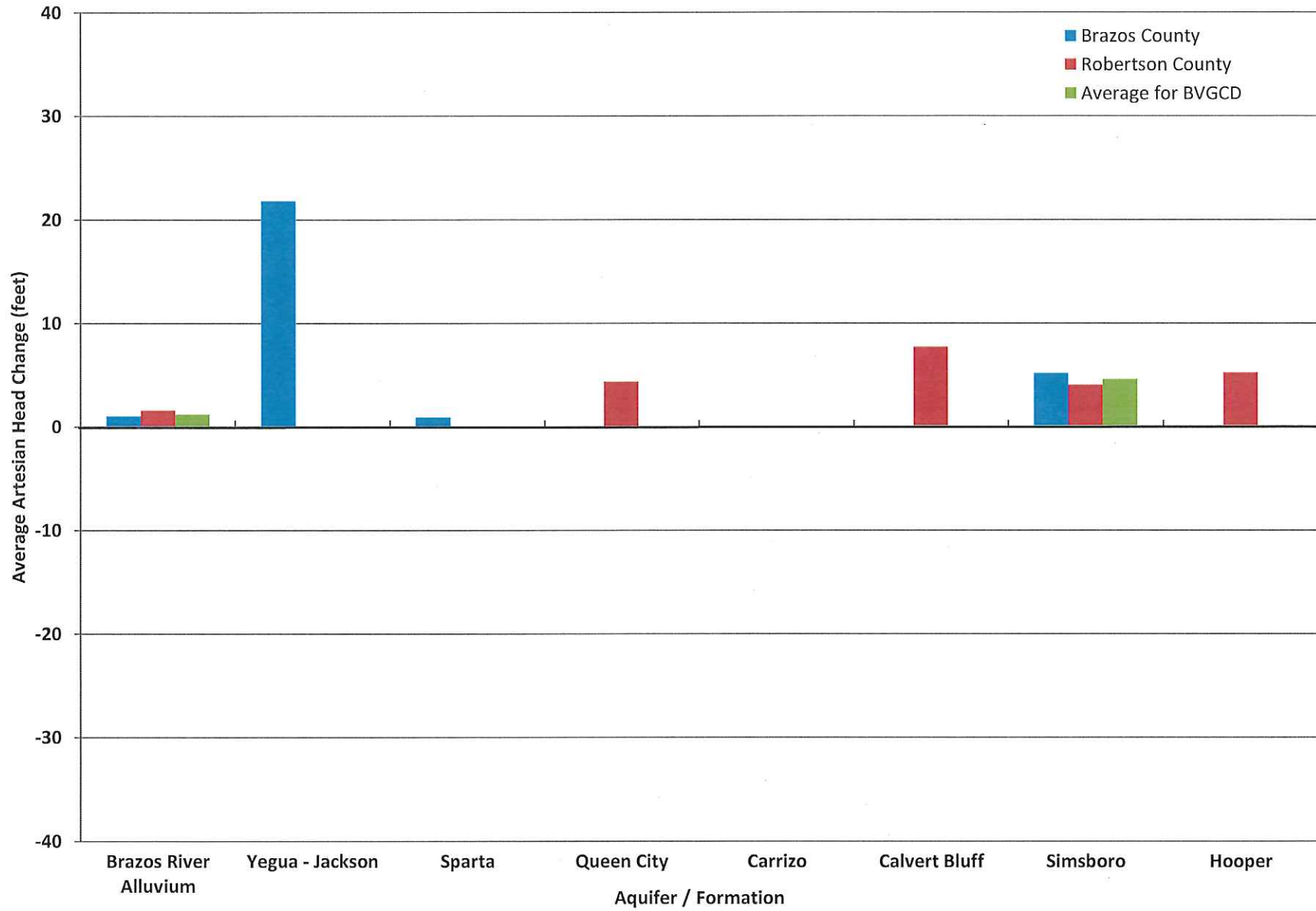
ROBERTSON COUNTY OBSERVATION WELLS MEASURED IN WINTER 2017



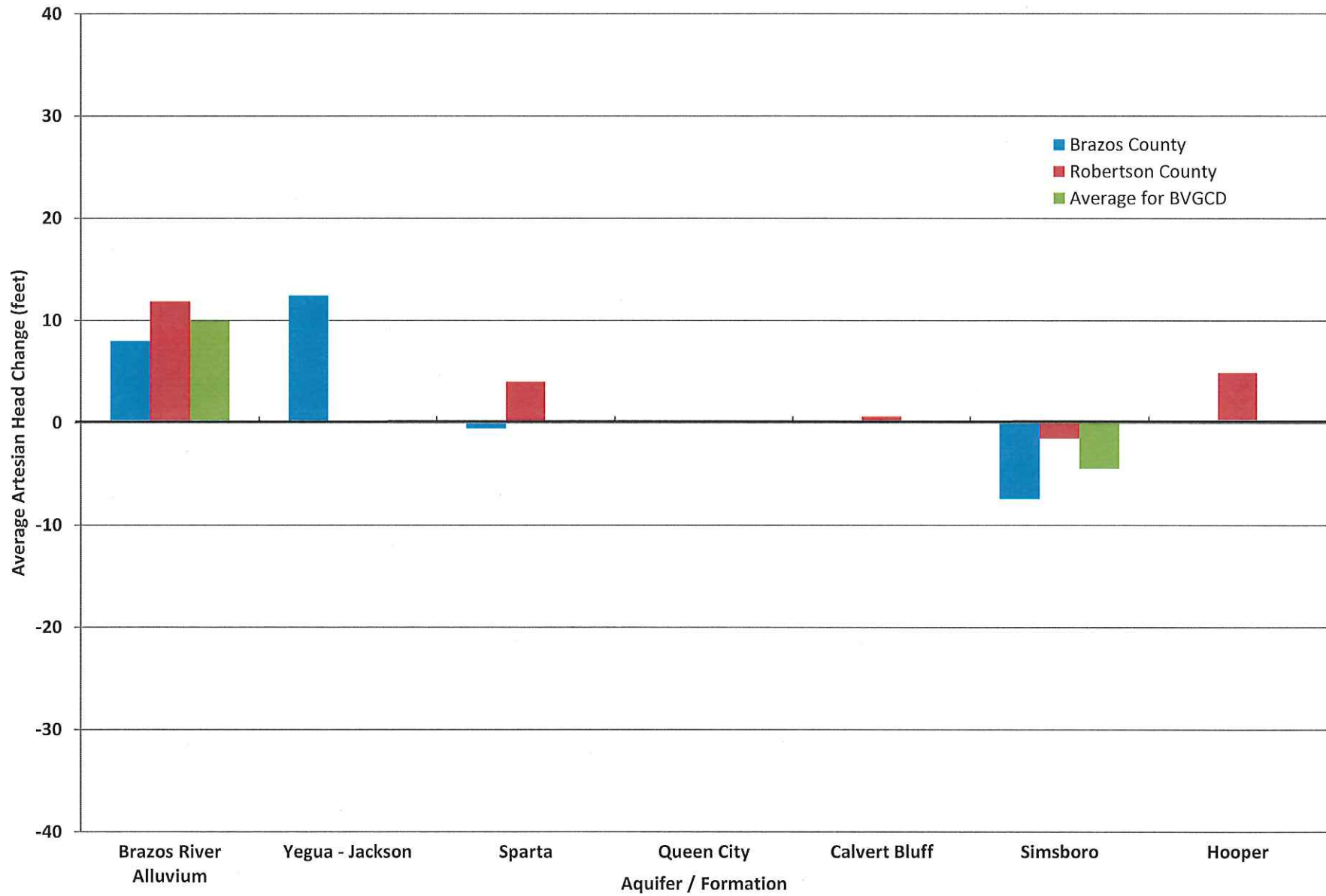
BRAZOS COUNTY OBSERVATION WELLS MEASURED IN WINTER 2017



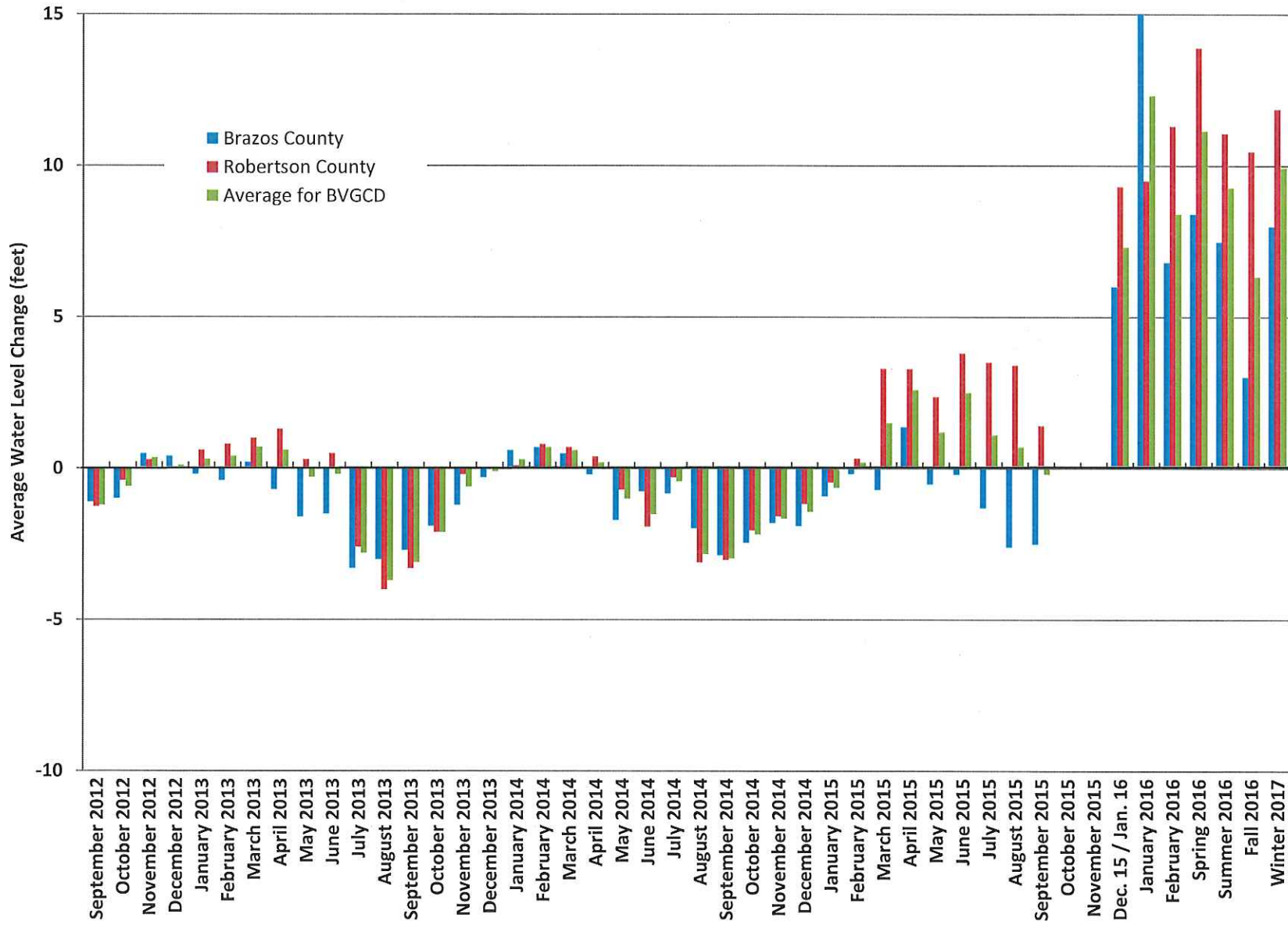
Average Artesian Head Change In Wells, By Aquifer From Winter 2015/2016 to Winter 2017



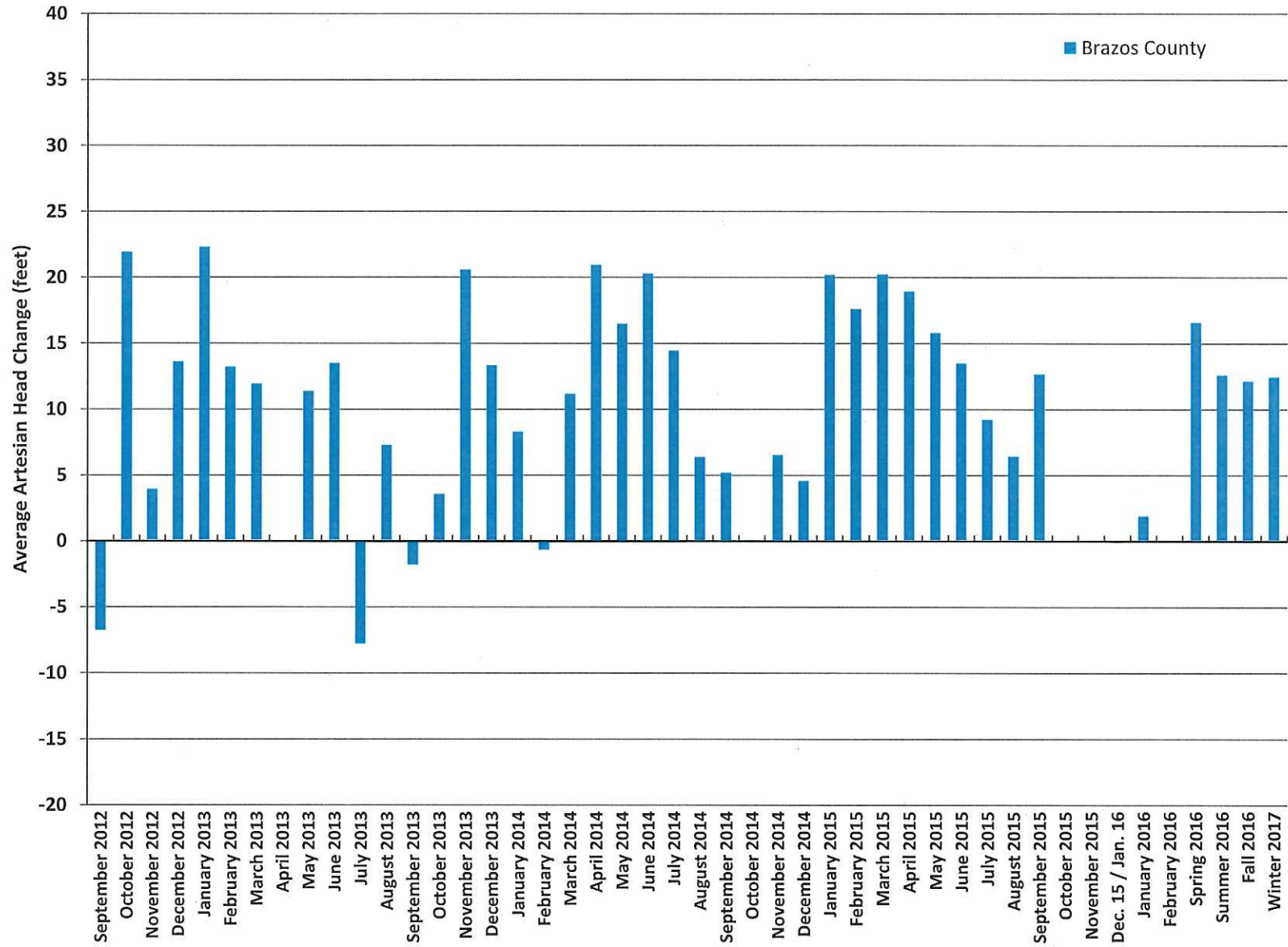
Average Artesian Head Change In Wells, By Aquifer From Early 2012 to Winter 2017



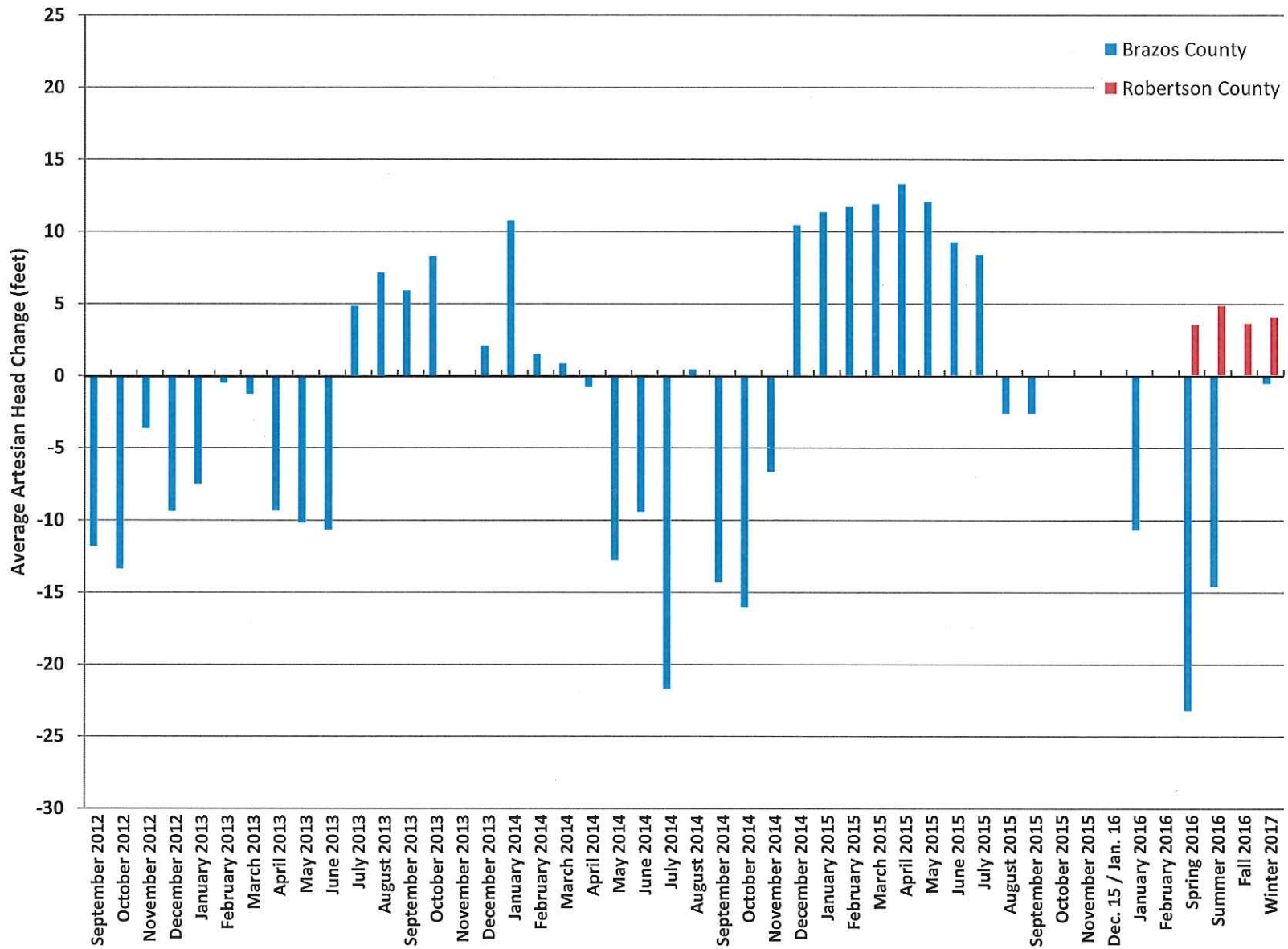
Average Static Water Level Change In Brazos River Alluvium Wells From Early 2012 to September 2012 through Winter 2017



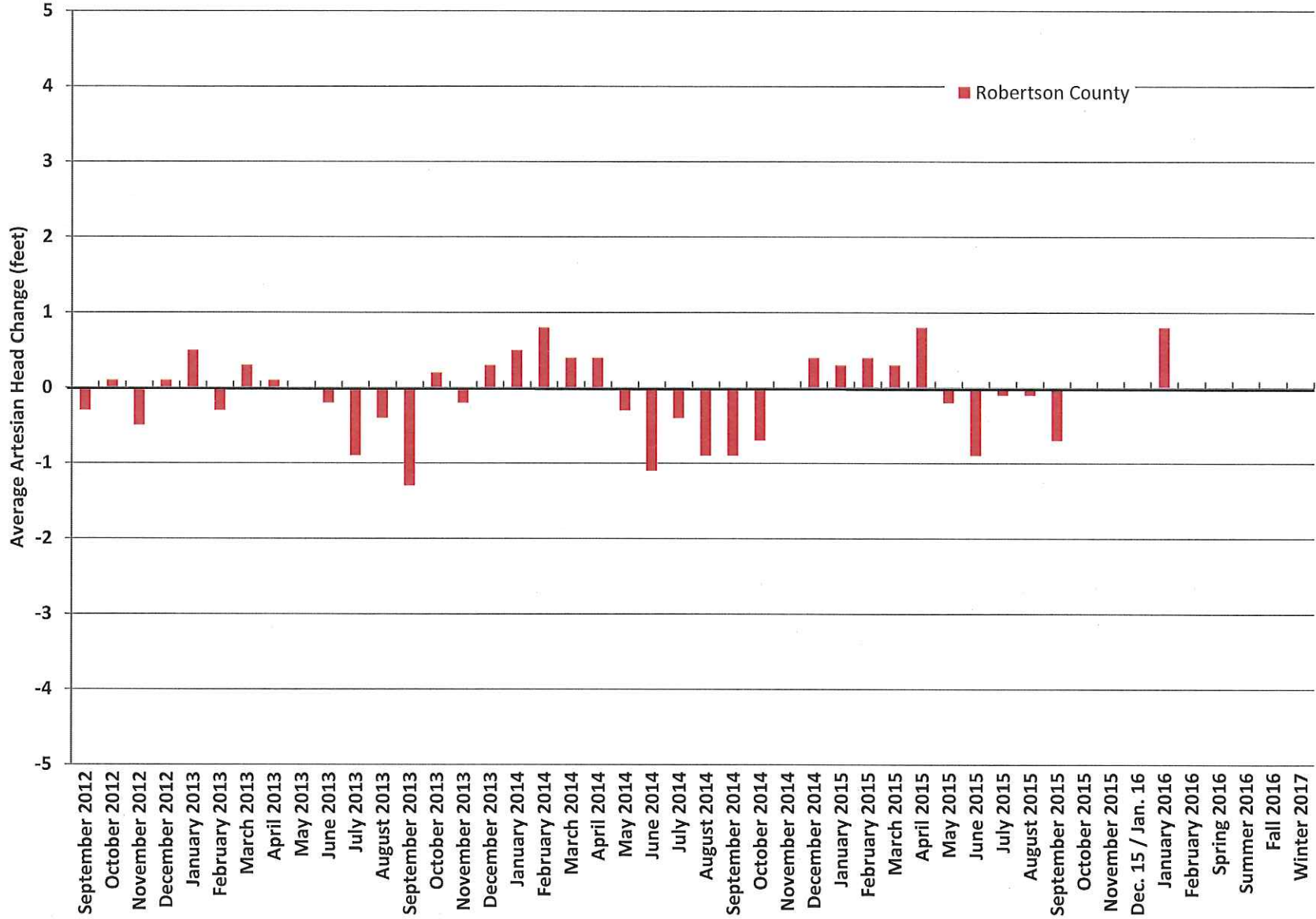
Average Artesian Head Change In Yegua-Jackson Aquifer Wells From Early 2012 to September 2012 through Winter 2017



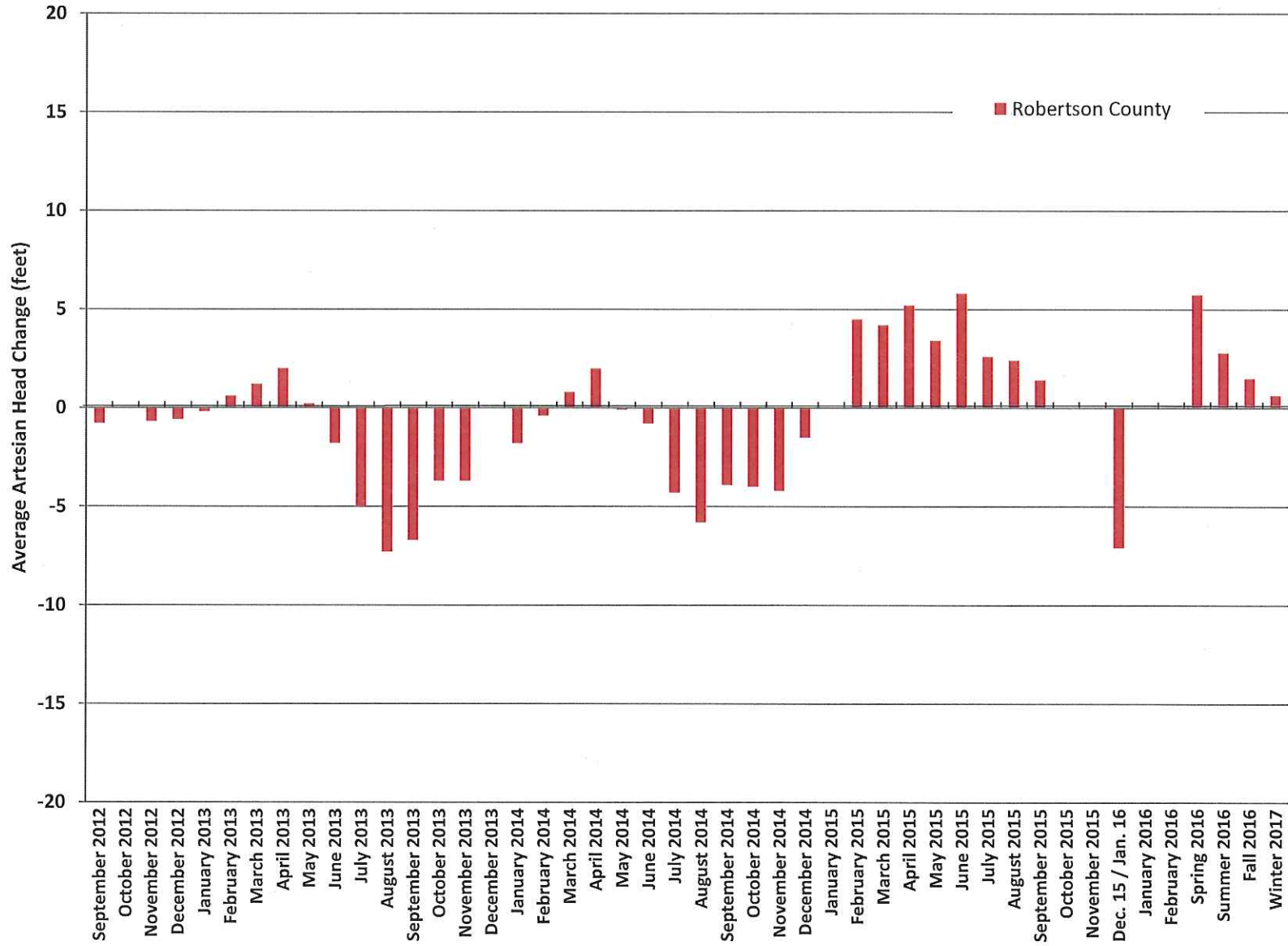
Average Artesian Head Change In Sparta Aquifer Wells From Early 2012 to September 2012 through Winter 2017



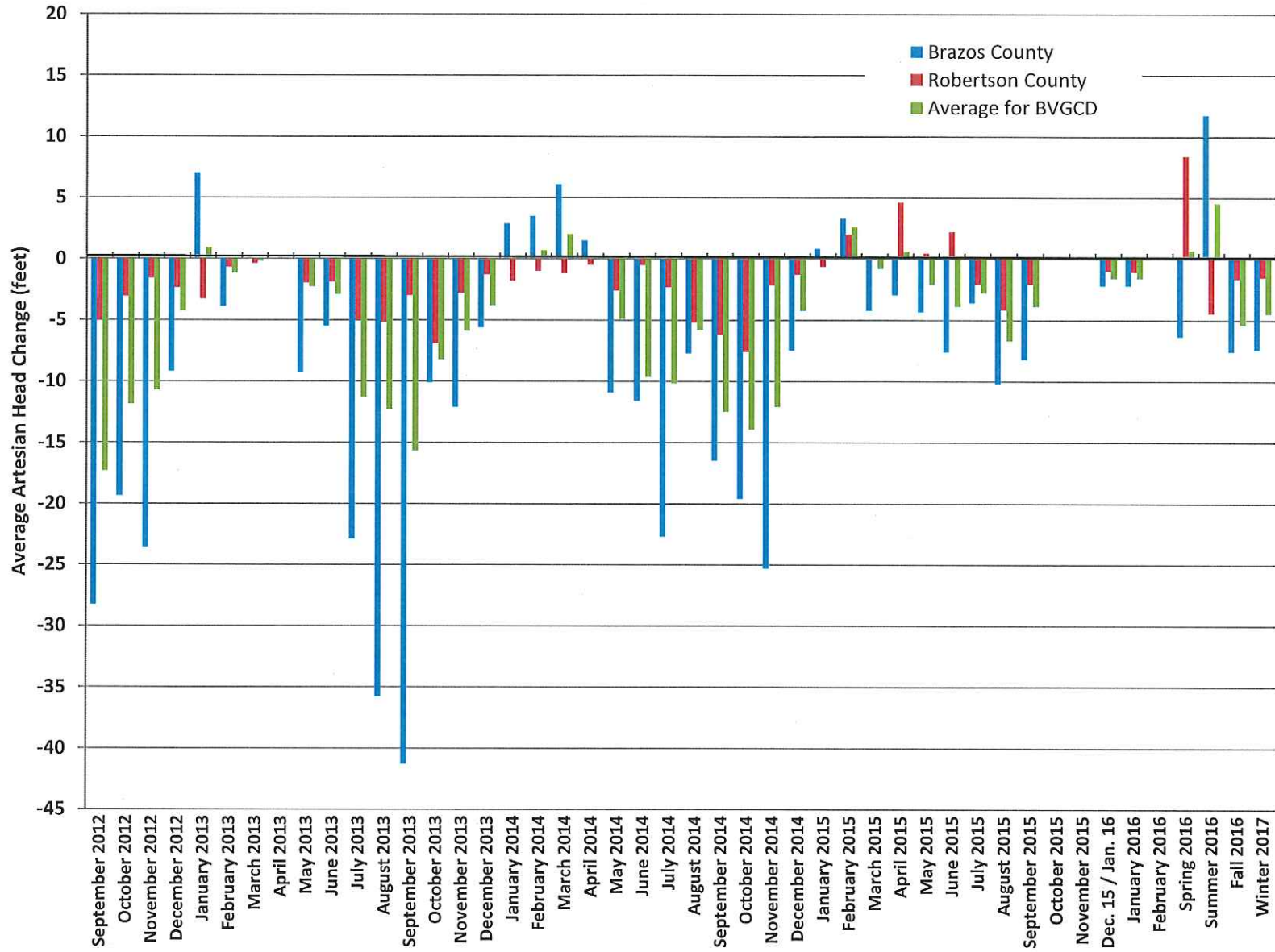
Average Artesian Head Change In Queen City Aquifer Wells From Early 2012 to September 2012 through Winter 2017



Average Artesian Head Change In Calvert Bluff Wells From Early 2012 to September 2012 through Winter 2017



Average Artesian Head Change In Simsboro Aquifer Wells From Early 2012 to September 2012 through Winter 2017



Average Artesian Head Change In Hooper Wells From Early 2012 to September 2012 through Fall 2016

