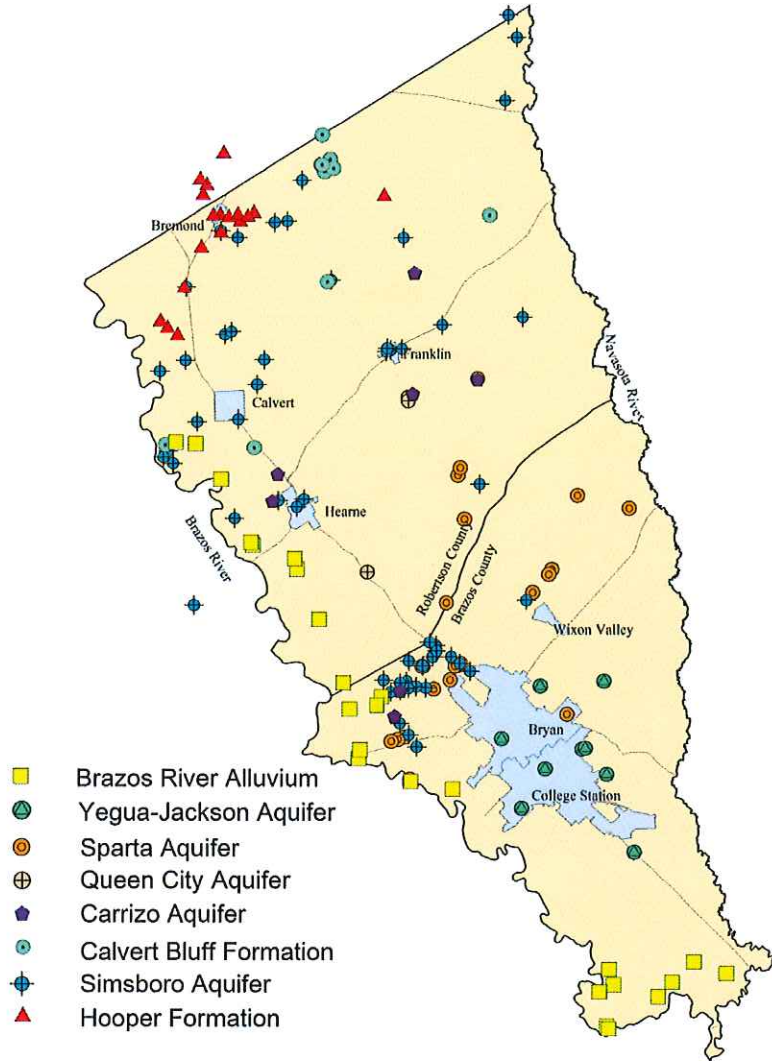


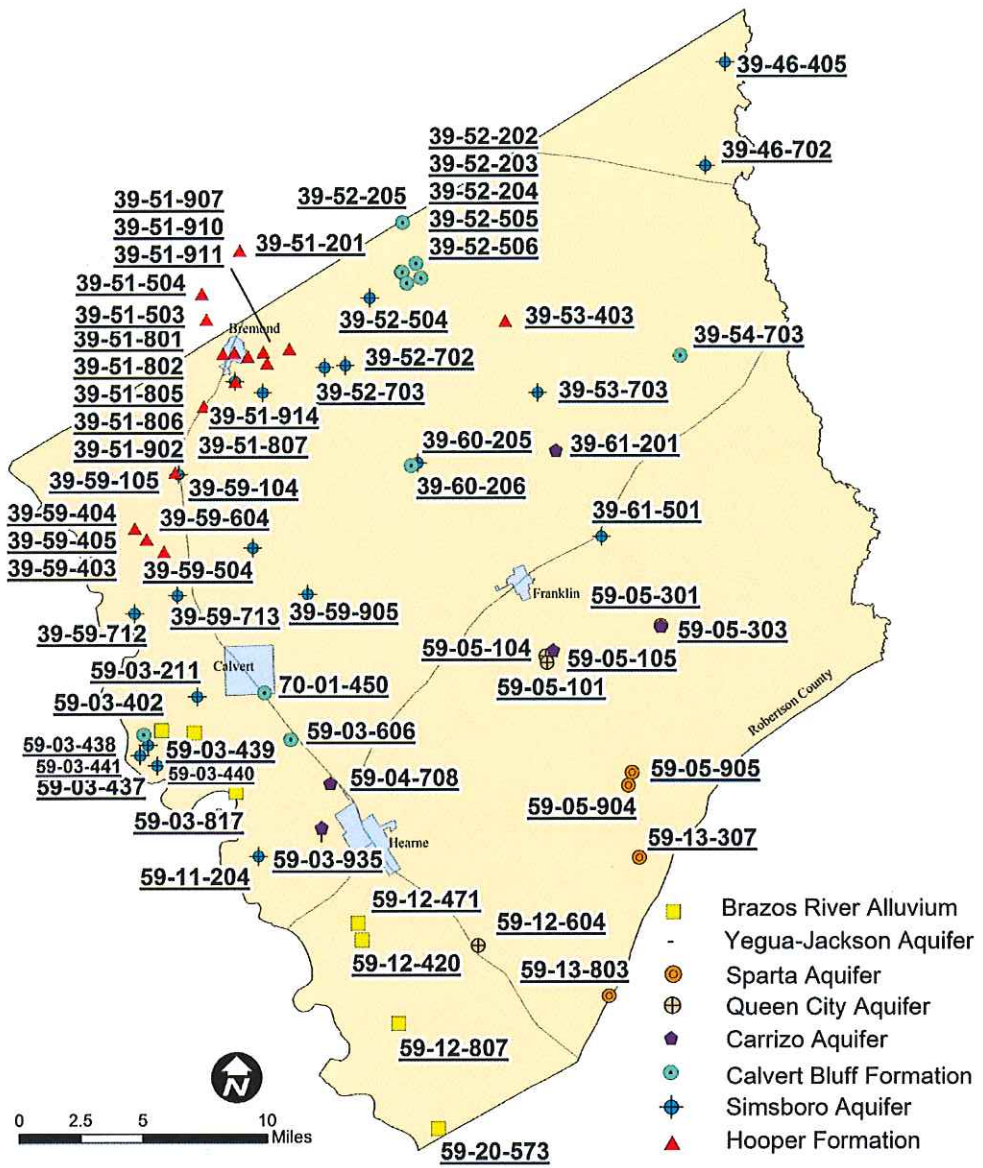
# EXISTING OBSERVATION WELLS

116 wells measured  
from 6/24 to 7-28



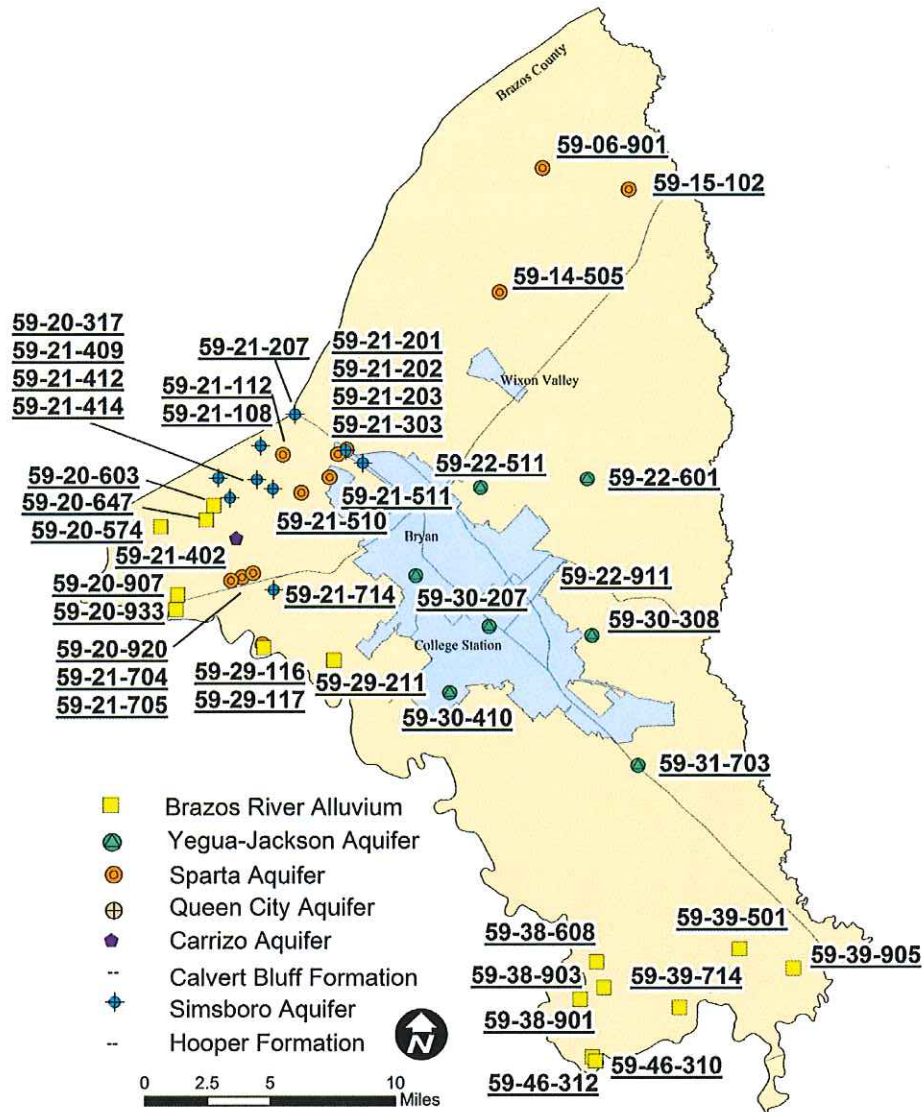
# ROBERTSON/FALLS COUNTIES OBSERVATION

## 70 WELLS MEASURED IN SUMMER 2016

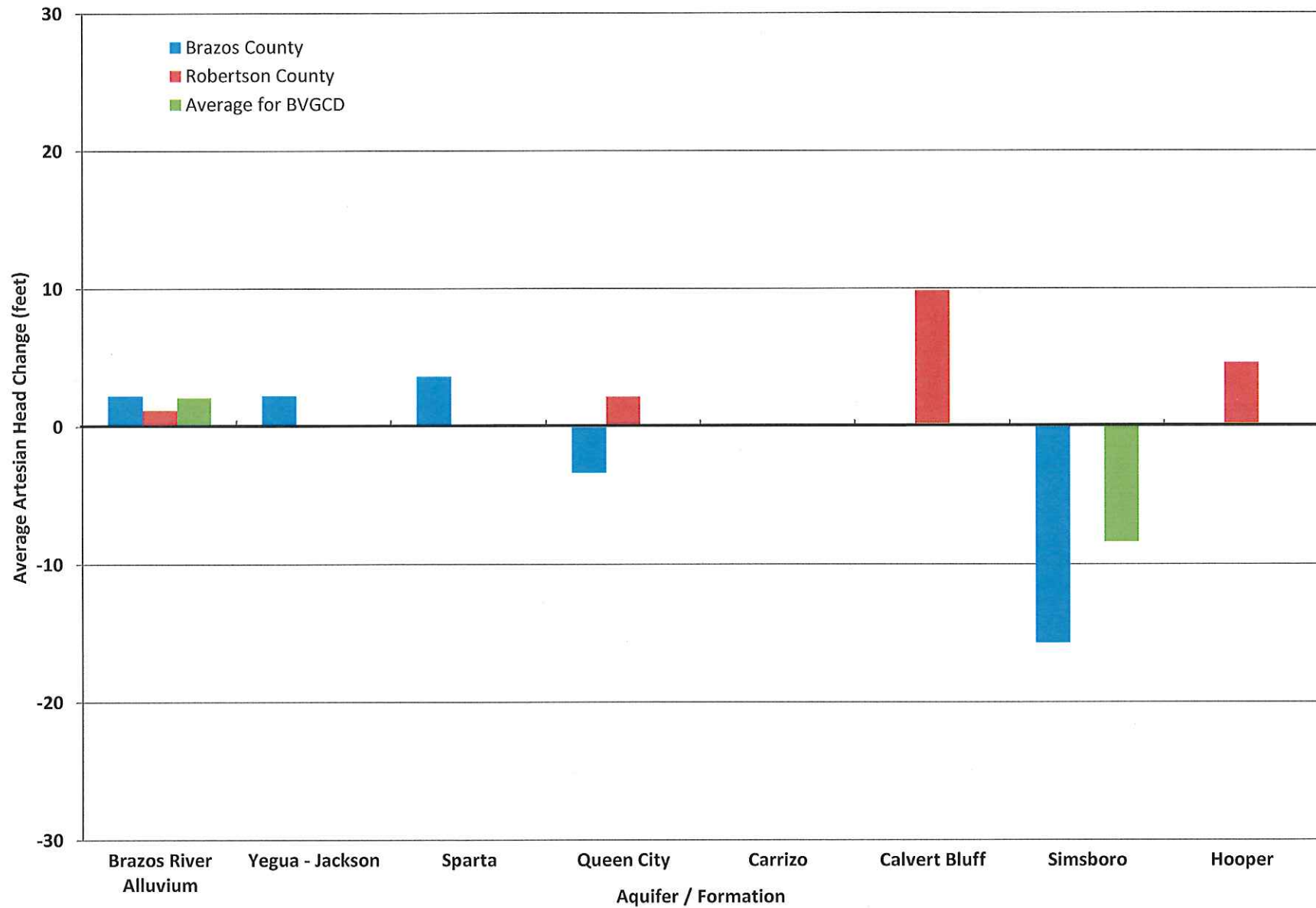


# BRAZOS COUNTY OBSERVATION

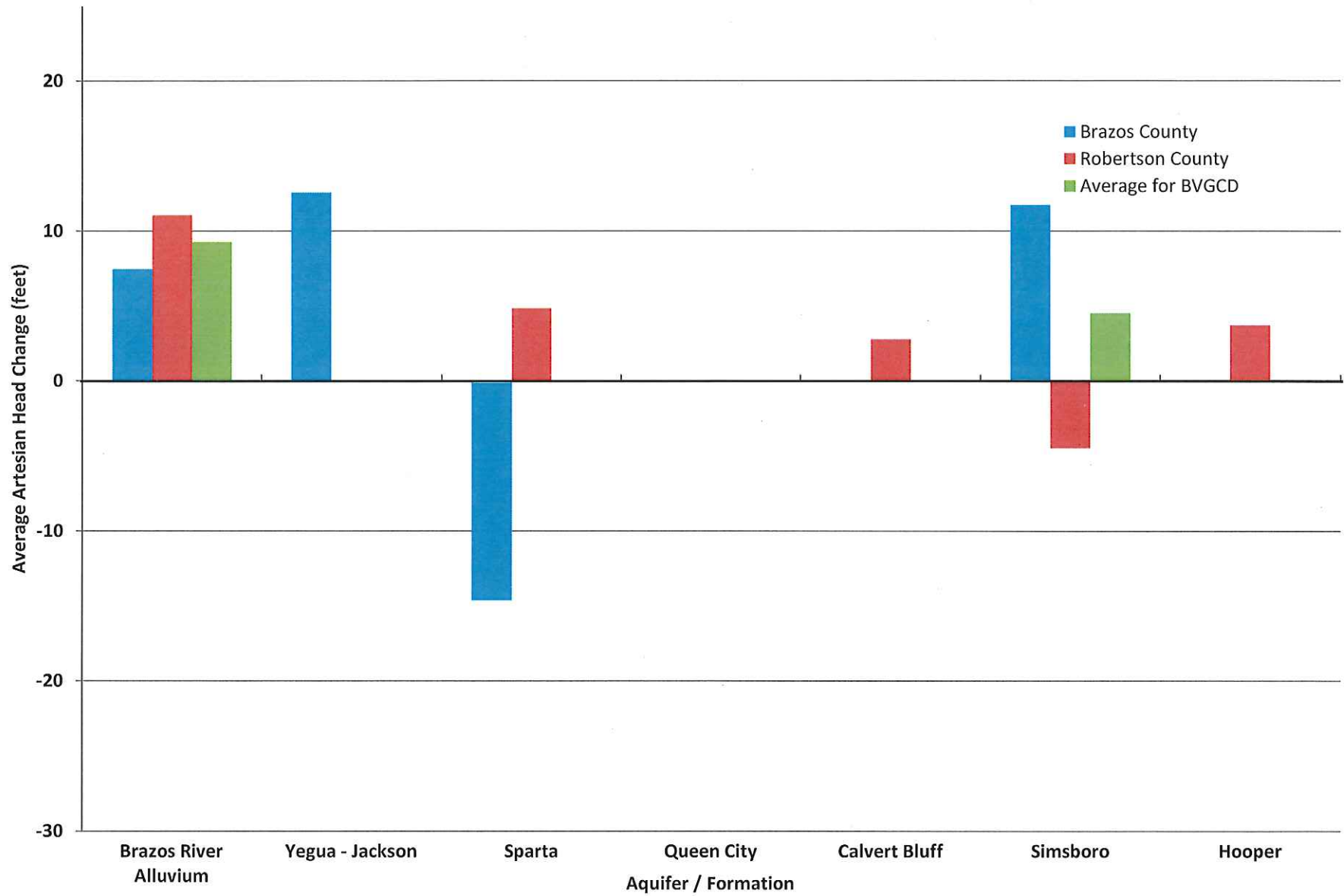
## 46 WELLS MEASURED IN SUMMER 2016



## Average Artesian Head Change In Wells, By Aquifer From Winter 2015/2016 to Summer 2016

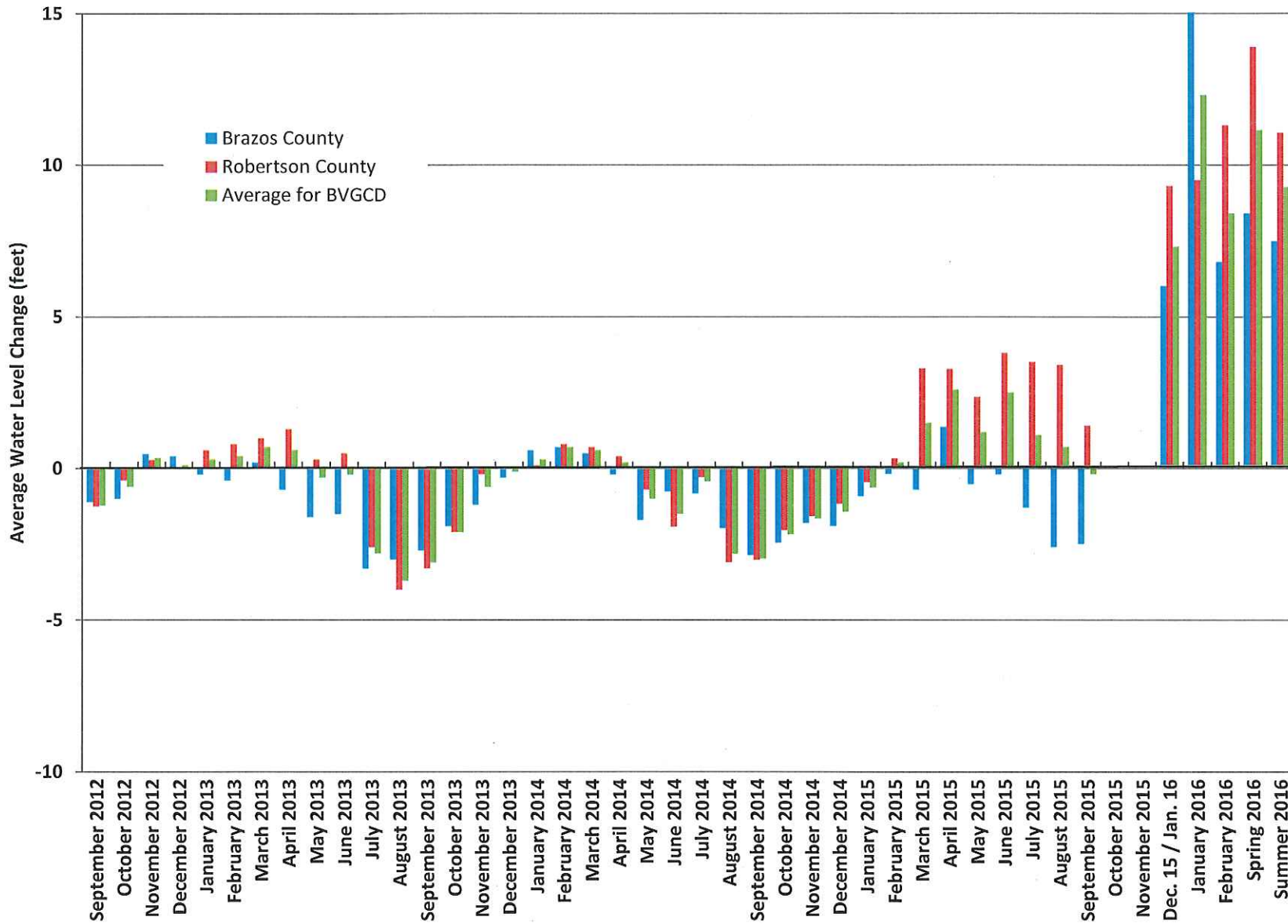


## Average Artesian Head Change In Wells, By Aquifer From Early 2012 to Summer 2016

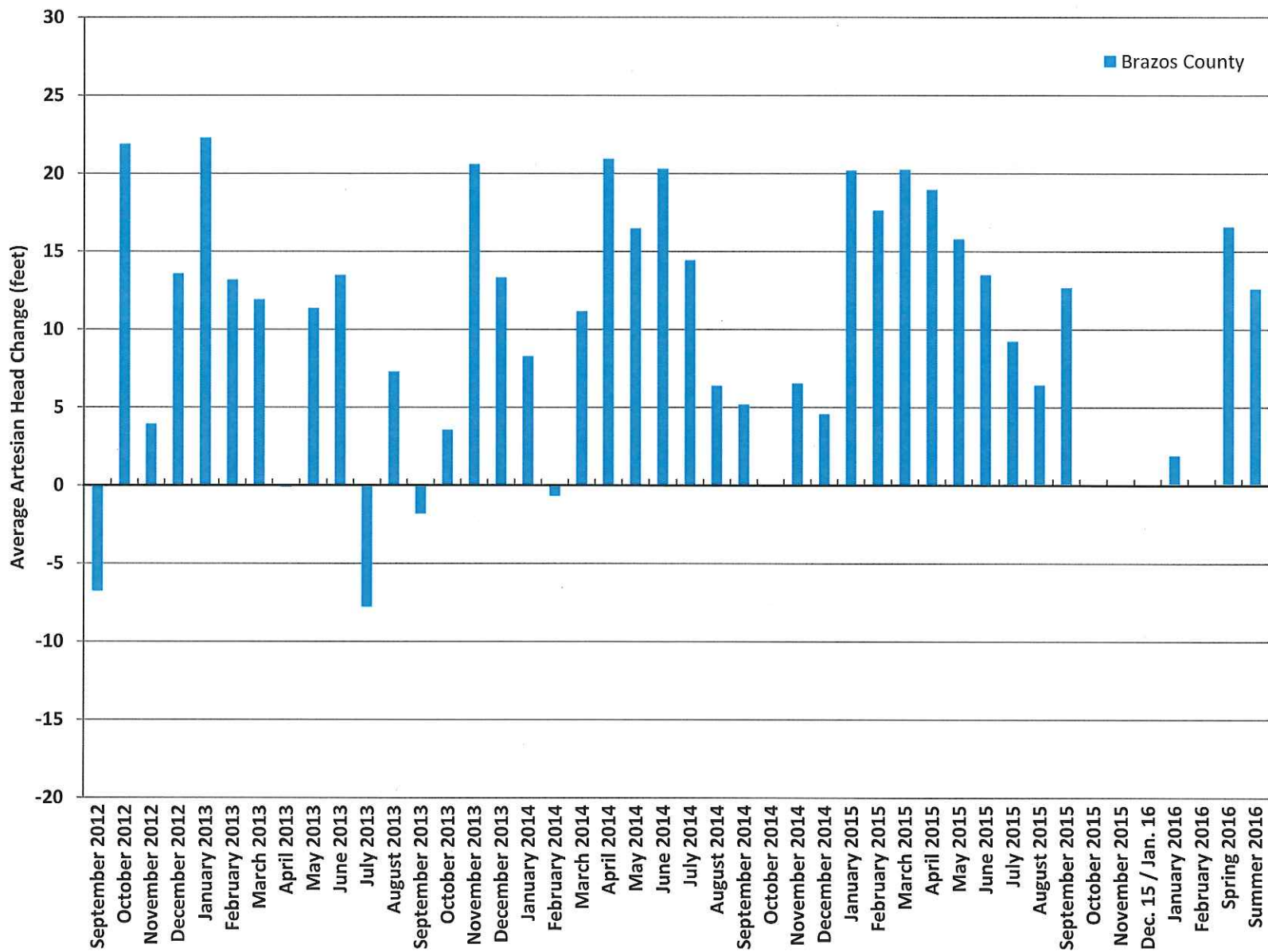




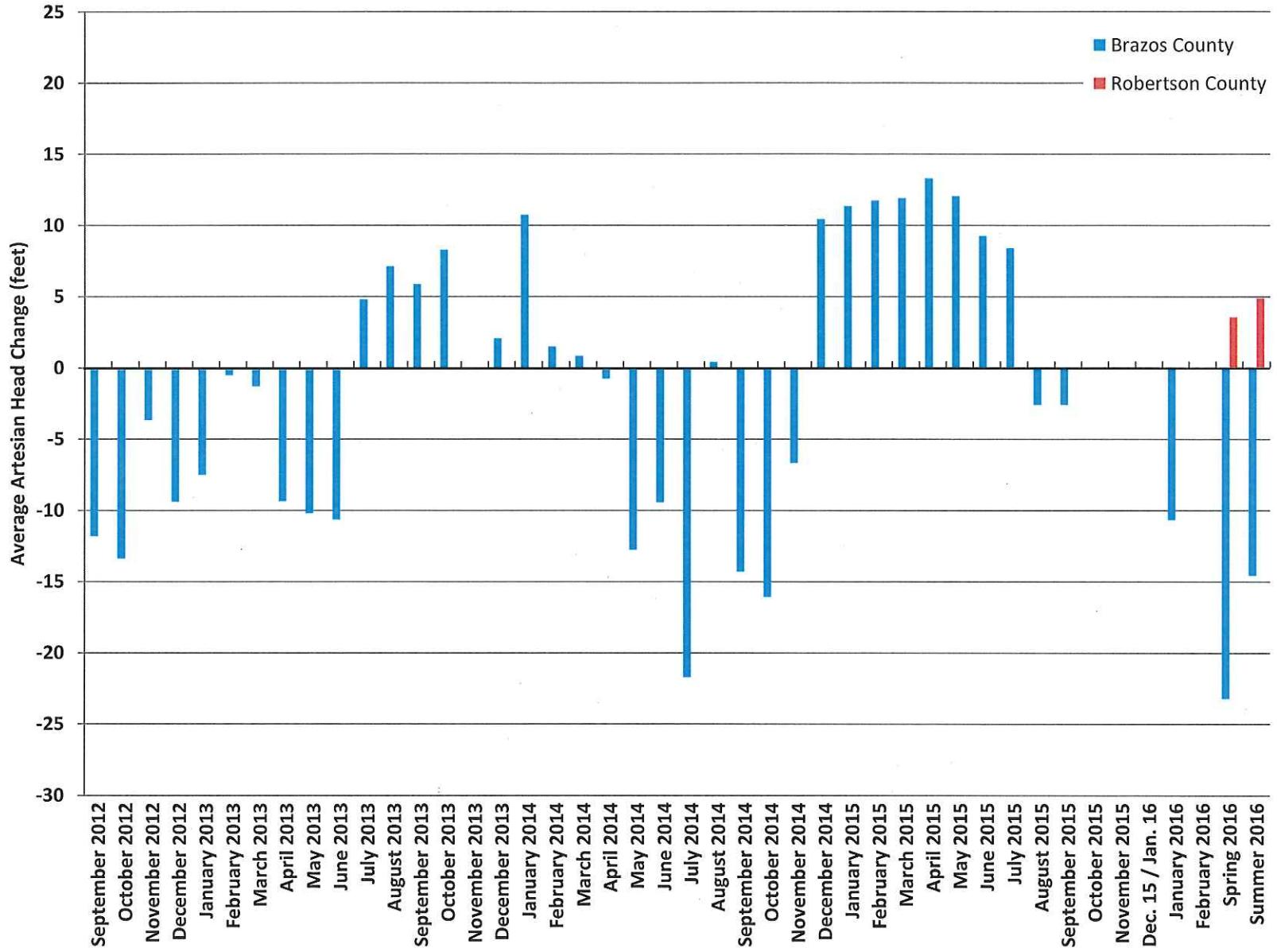
## Average Static Water Level Change In Brazos River Alluvium Wells From Early 2012 to September 2012 through Summer 2016



## Average Artesian Head Change In Yegua-Jackson Aquifer Wells From Early 2012 to September 2012 through Summer 2016

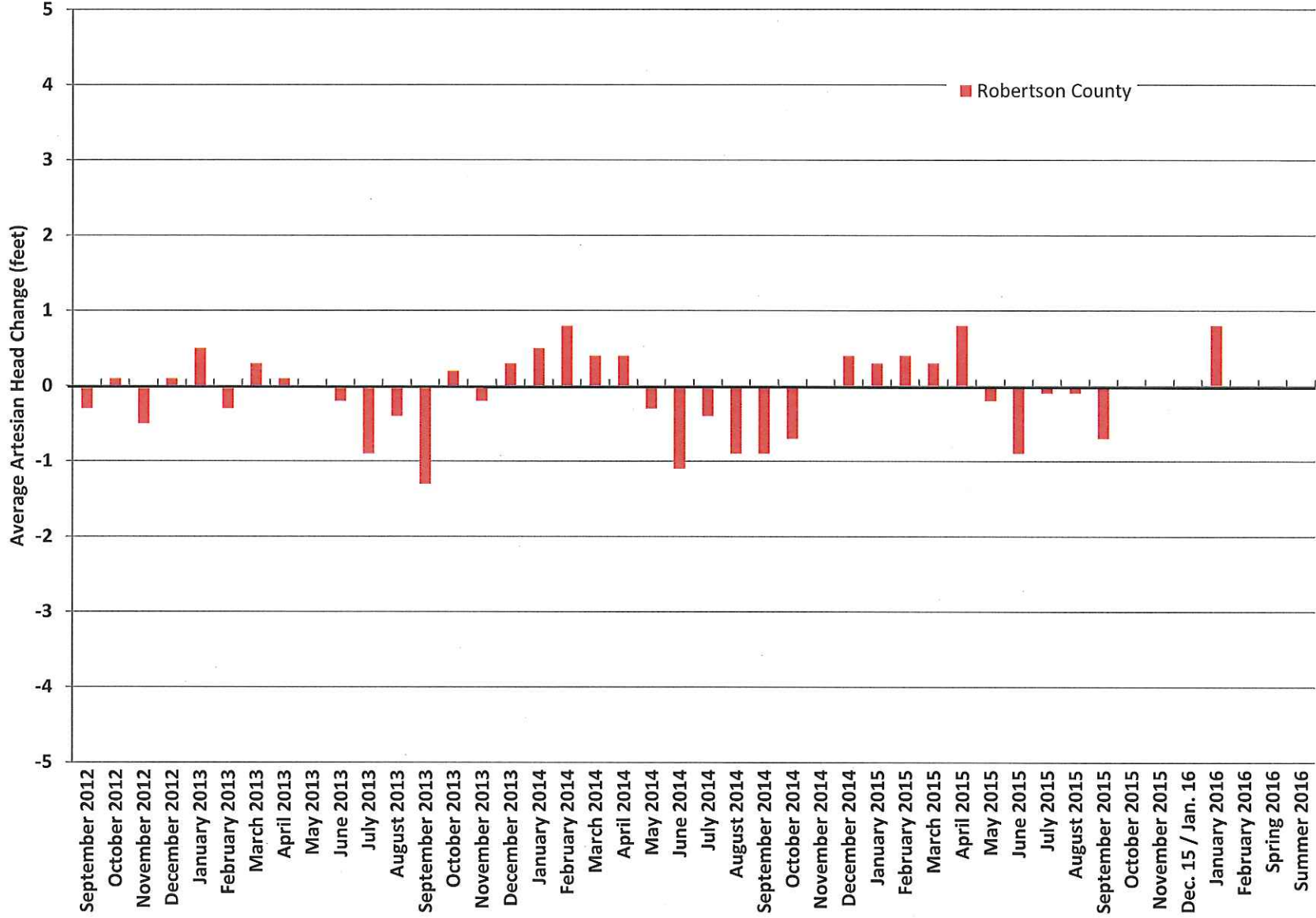


## Average Artesian Head Change In Sparta Aquifer Wells From Early 2012 to September 2012 through Summer 2016

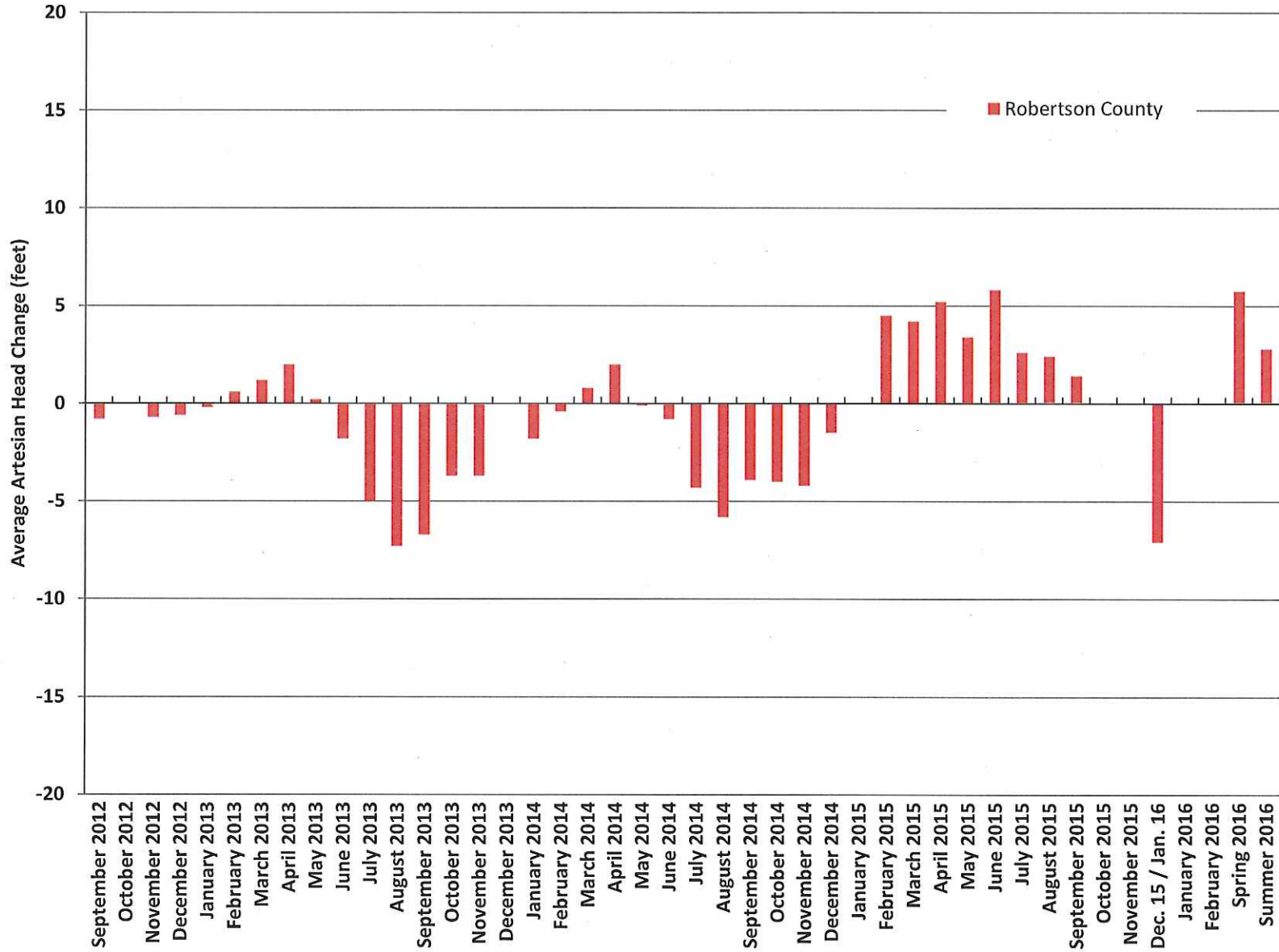




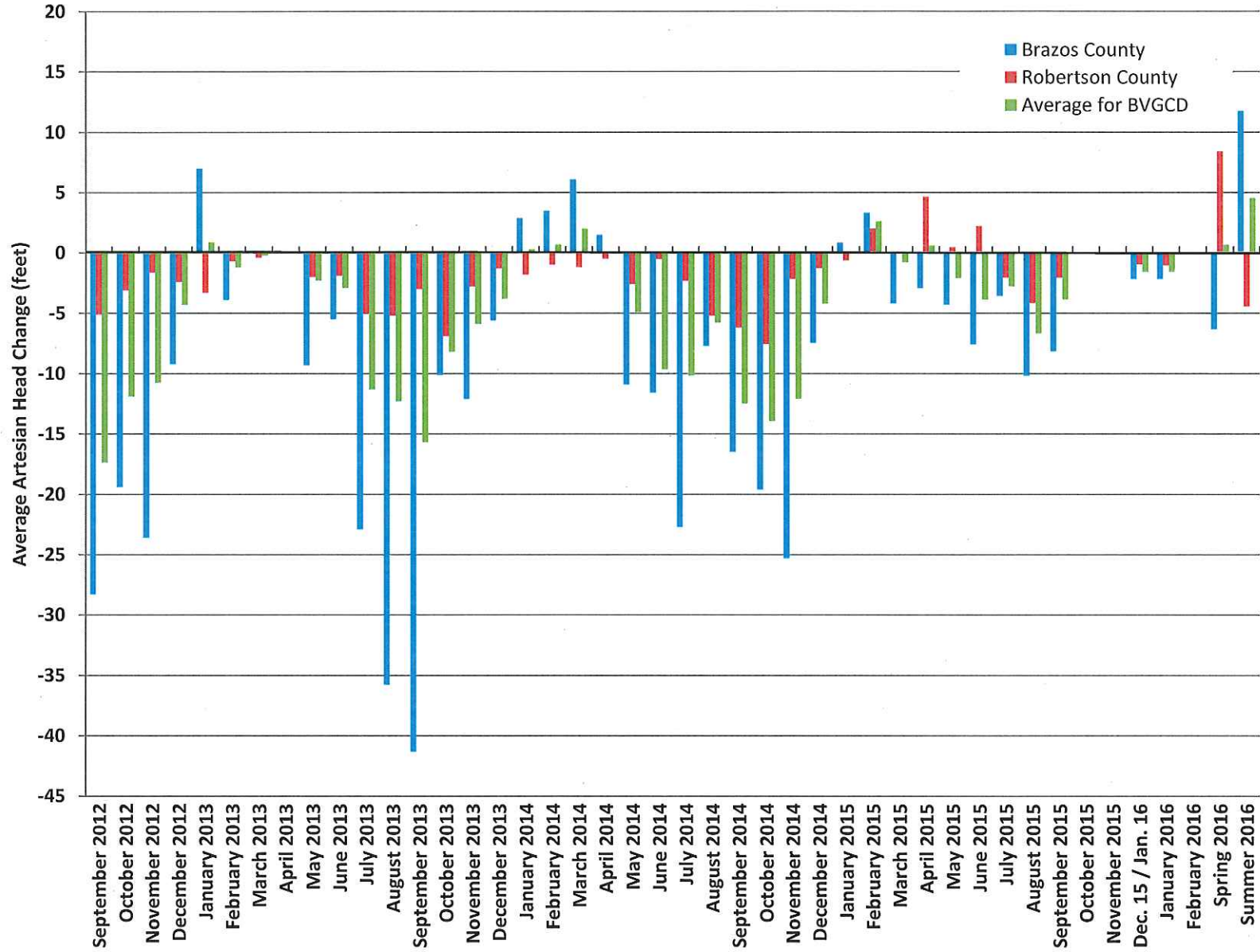
## Average Artesian Head Change In Queen City Aquifer Wells From Early 2012 to September 2012 through Summer 2016



## Average Artesian Head Change In Calvert Bluff Wells From Early 2012 to September 2012 through Summer 2016



## Average Artesian Head Change In Simsboro Aquifer Wells From Early 2012 to September 2012 through Summer 2016



## Average Artesian Head Change In Hooper Wells From Early 2012 to September 2012 through Summer 2016

