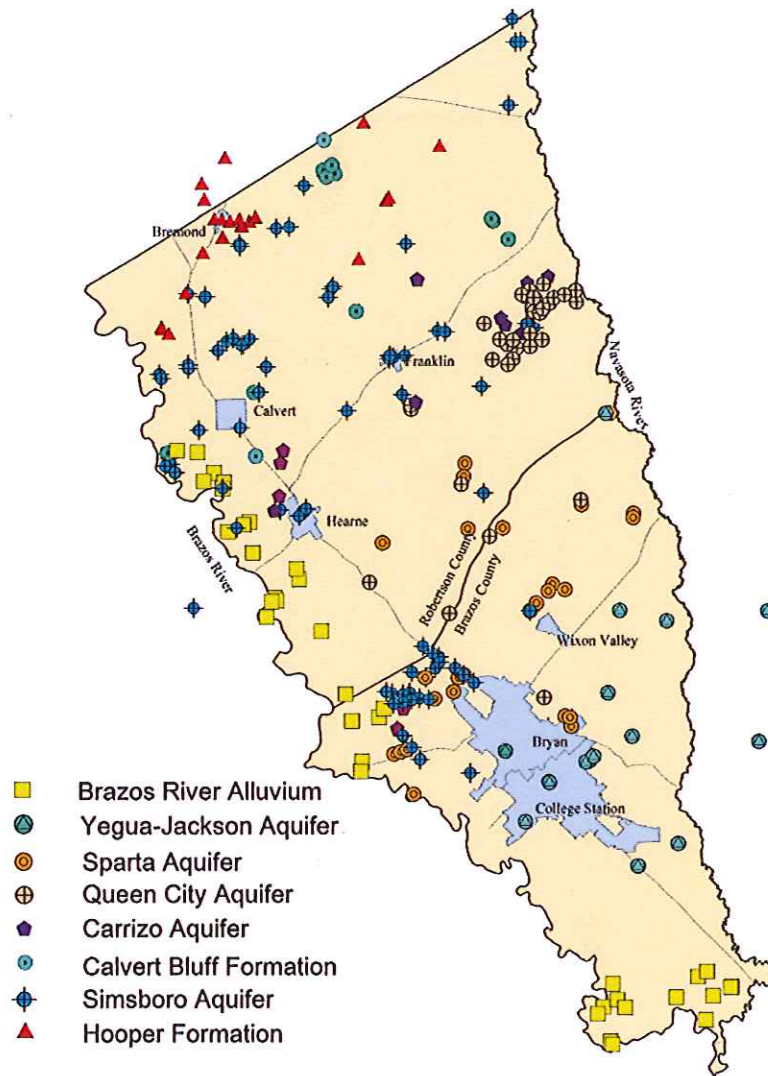


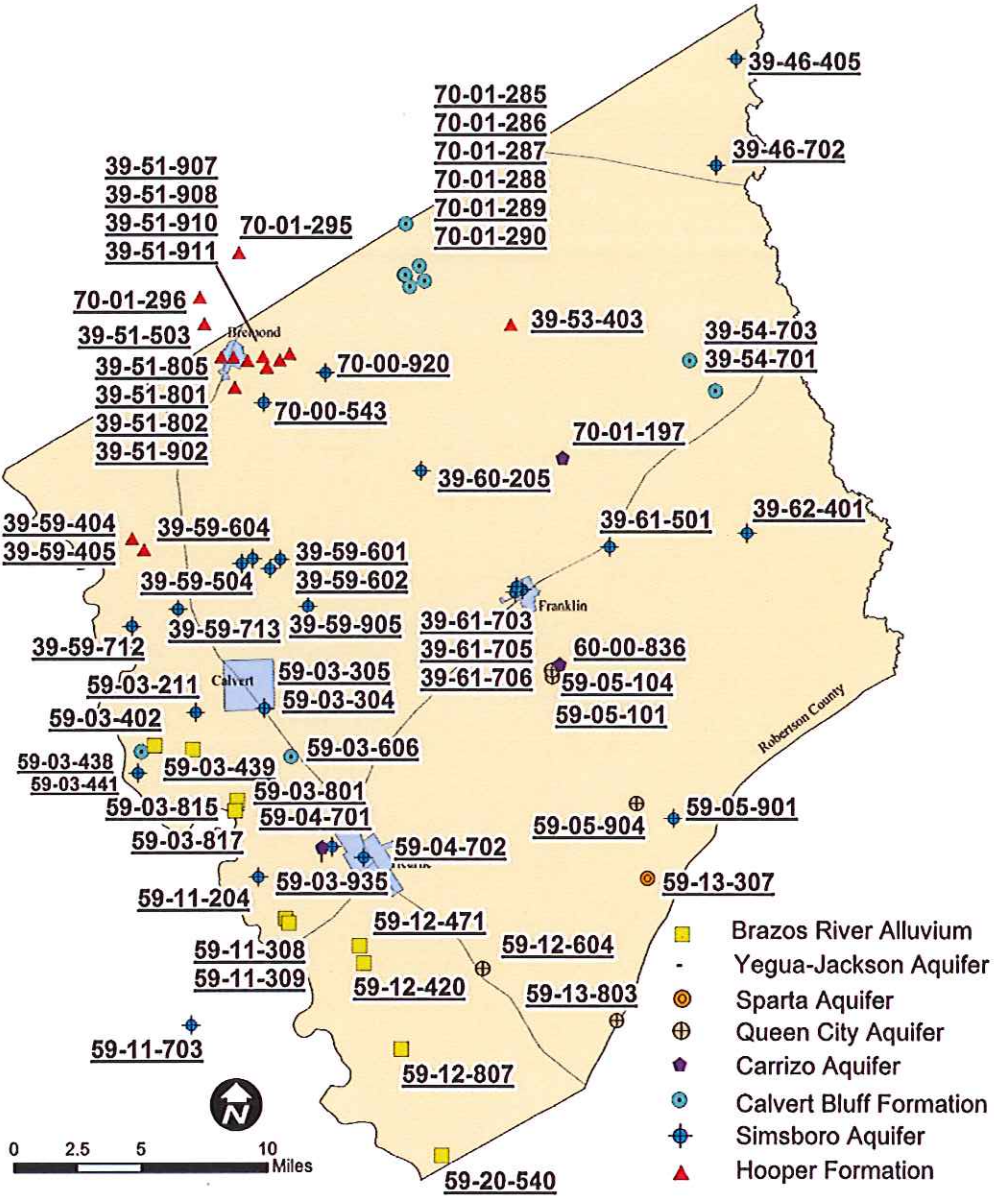
EXISTING OBSERVATION WELLS

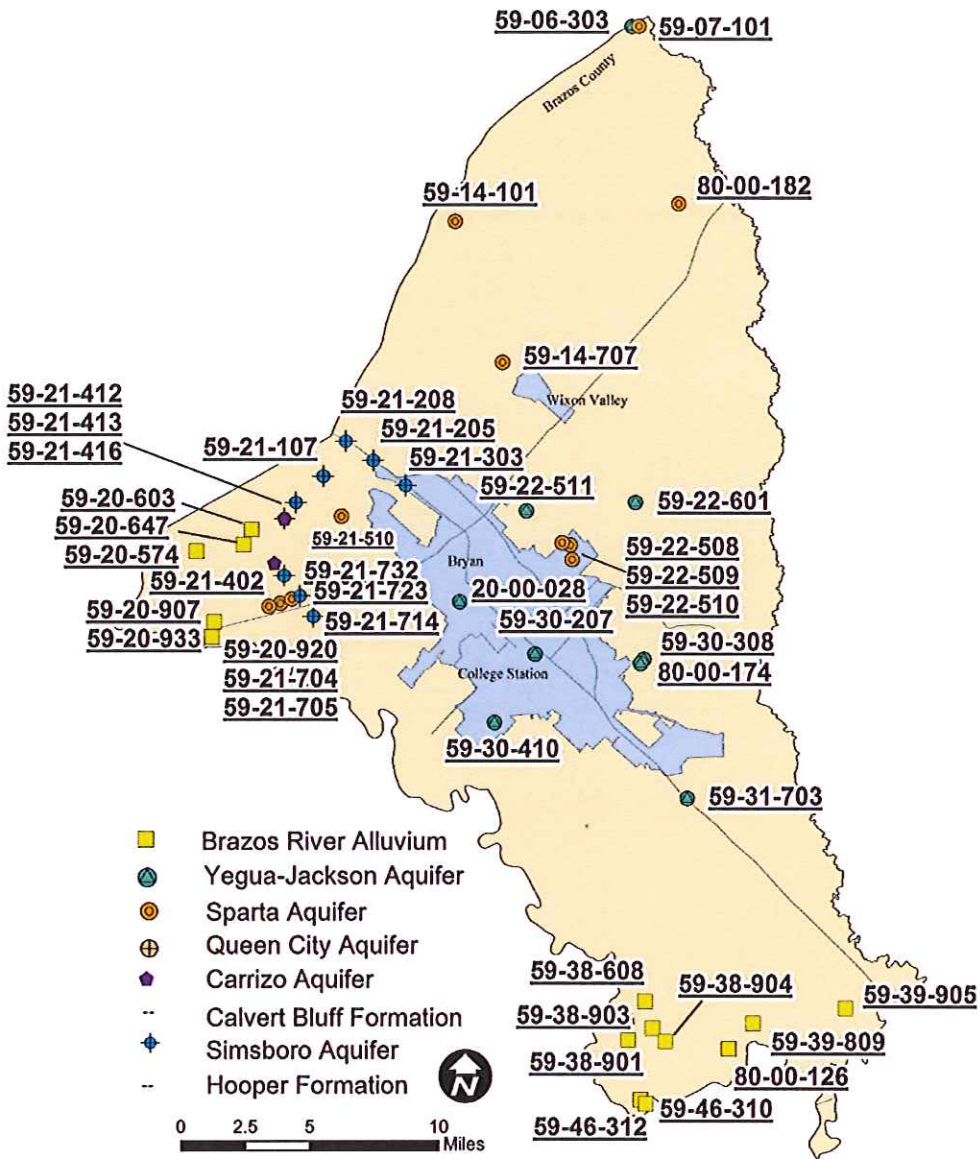
114 wells monitored
during September, 2015



ROBERTSON/FALLS/ MILAM counties

69 wells measured in
September, 2015

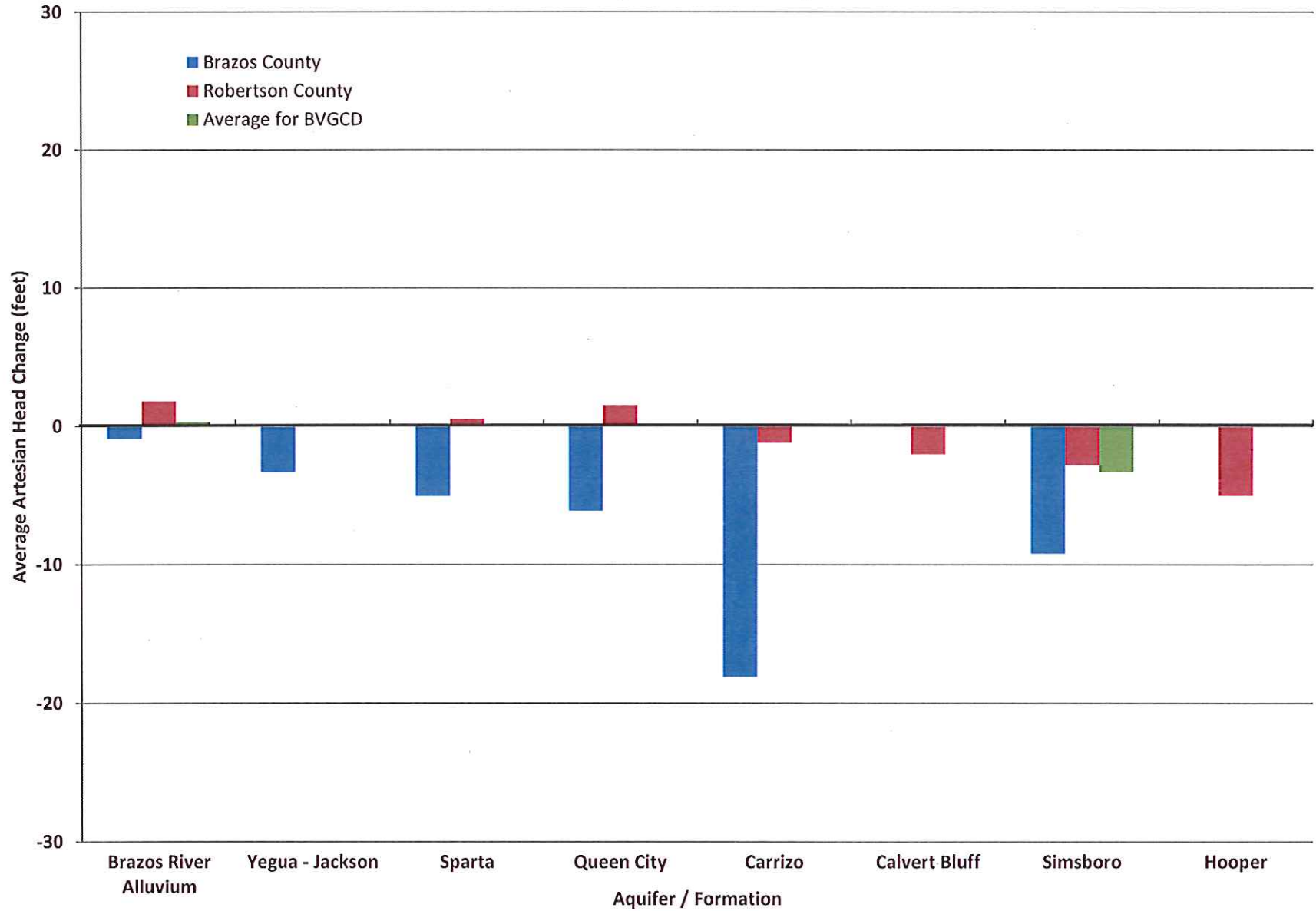




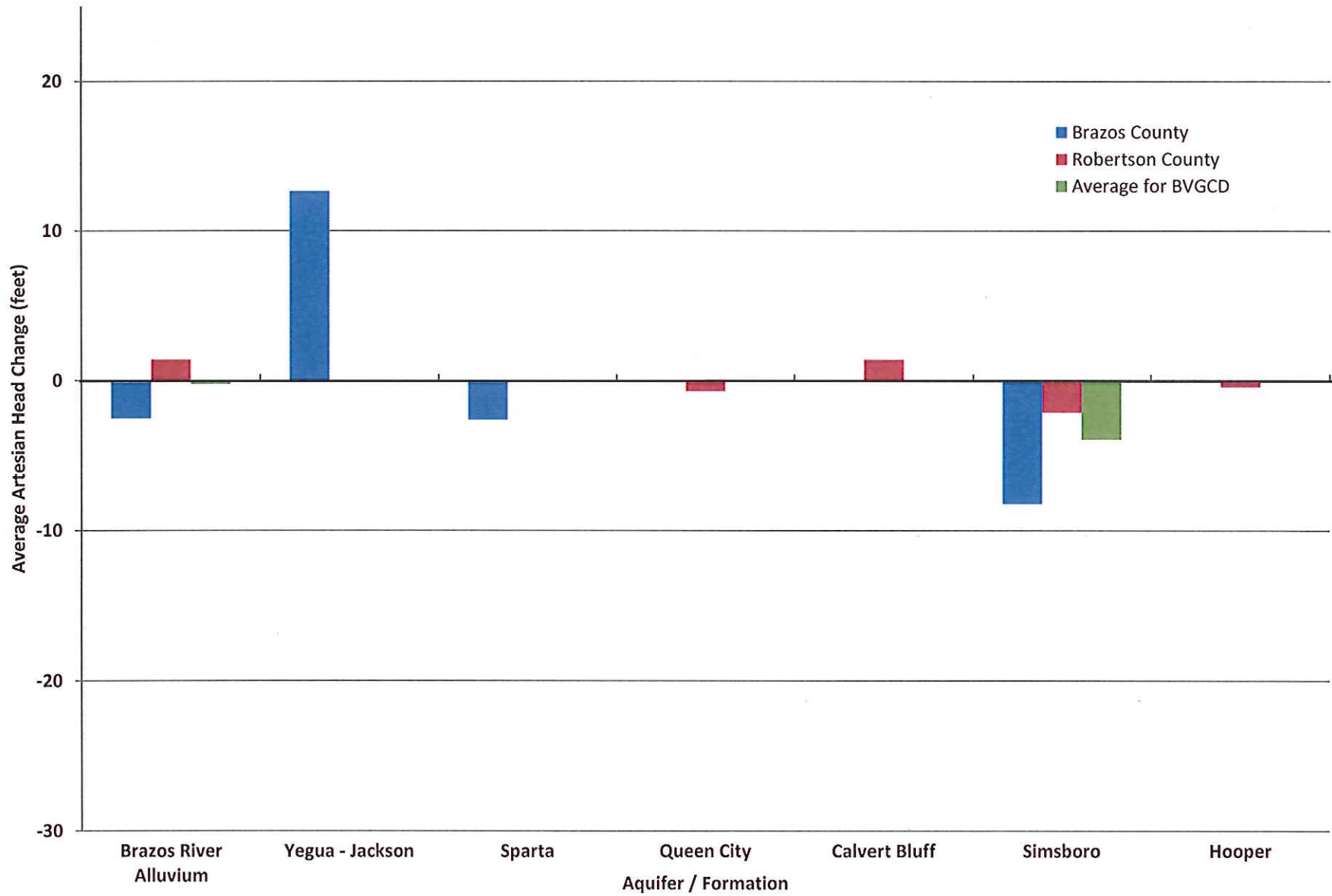
BRAZOS COUNTY

45 wells measured during September, 2015

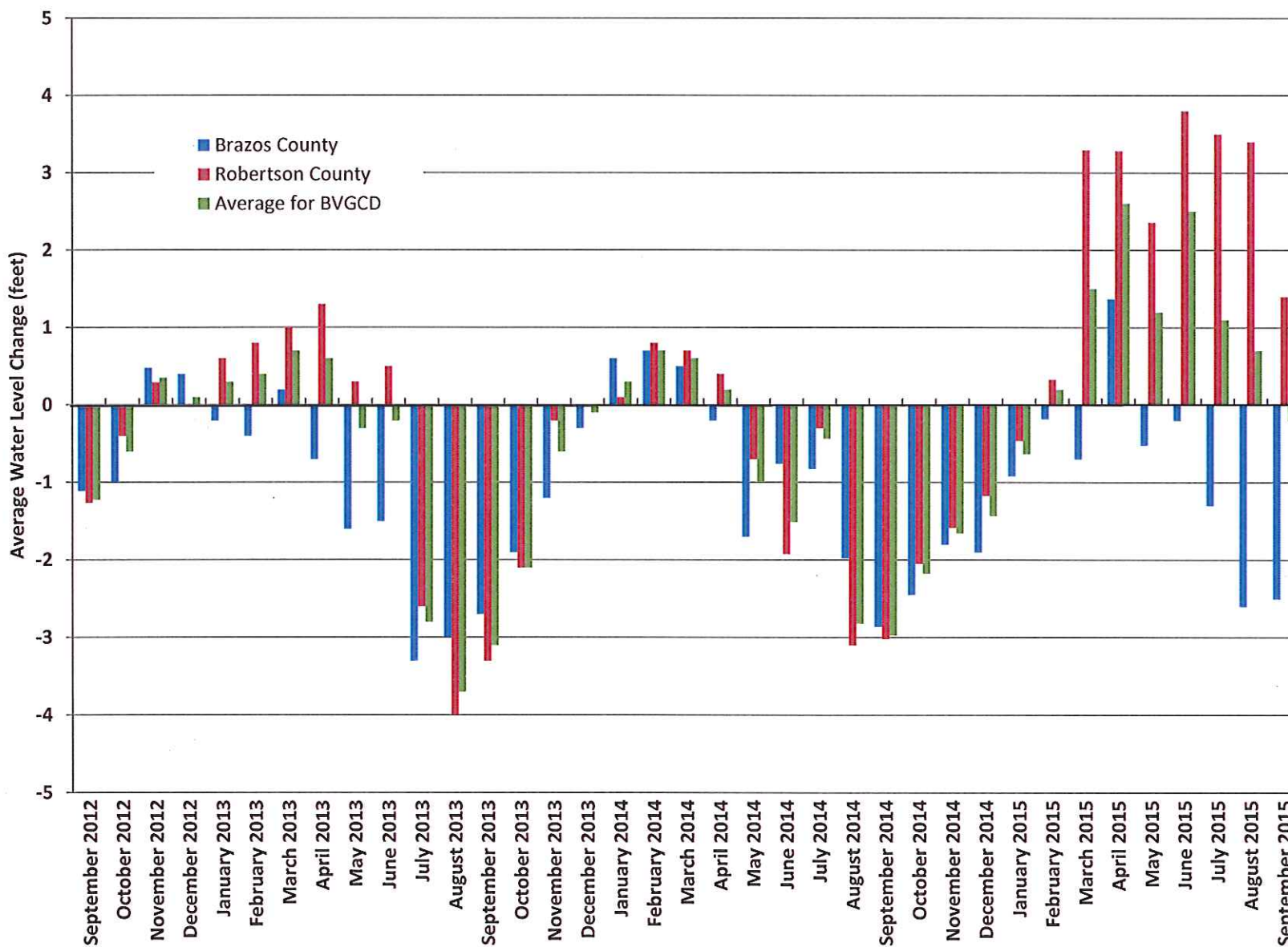
Average Artesian Head Change In Wells, By Aquifer From January 2015 to September 2015



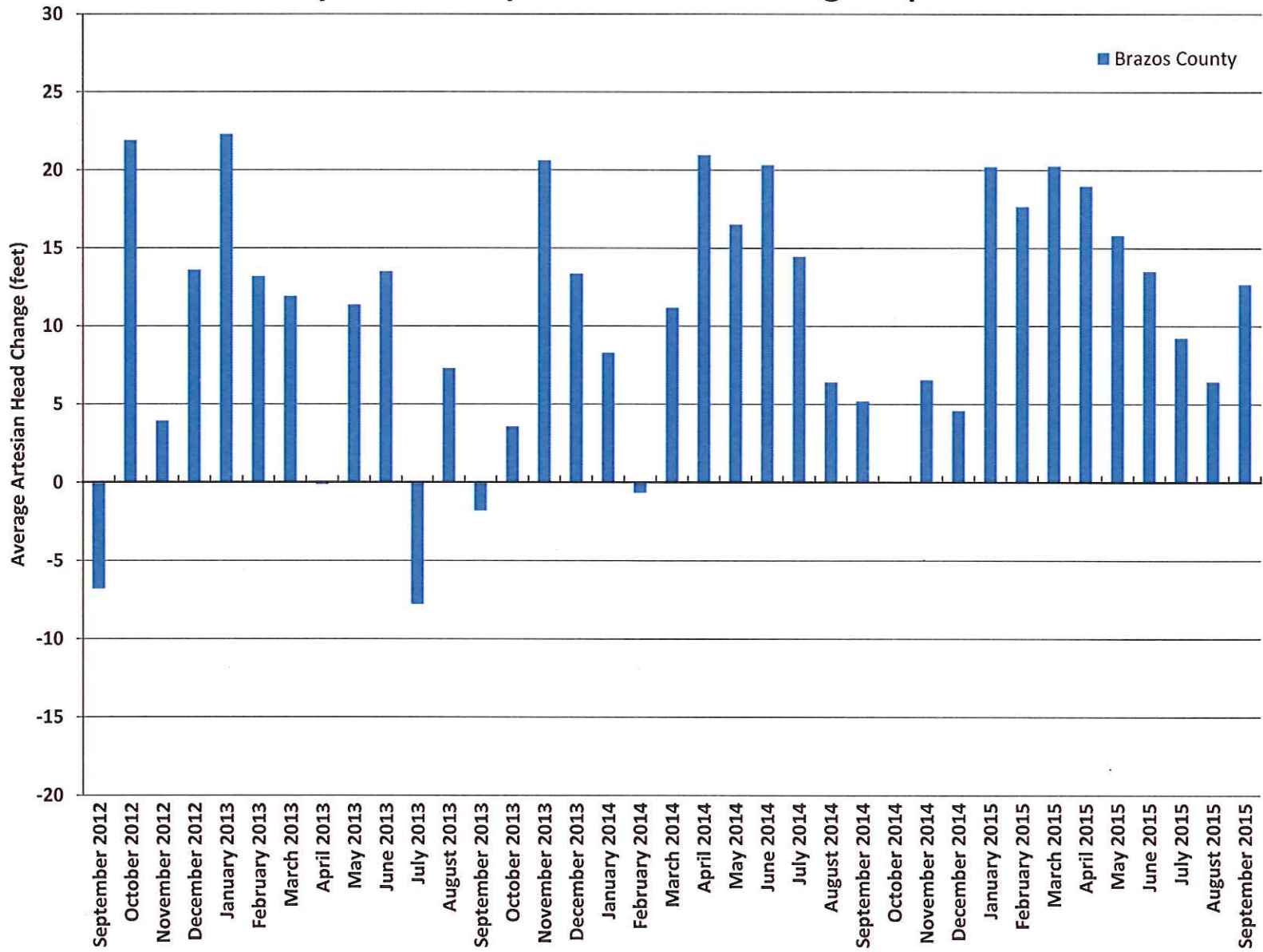
Average Artesian Head Change In Wells, By Aquifer From Early 2012 to September 2015



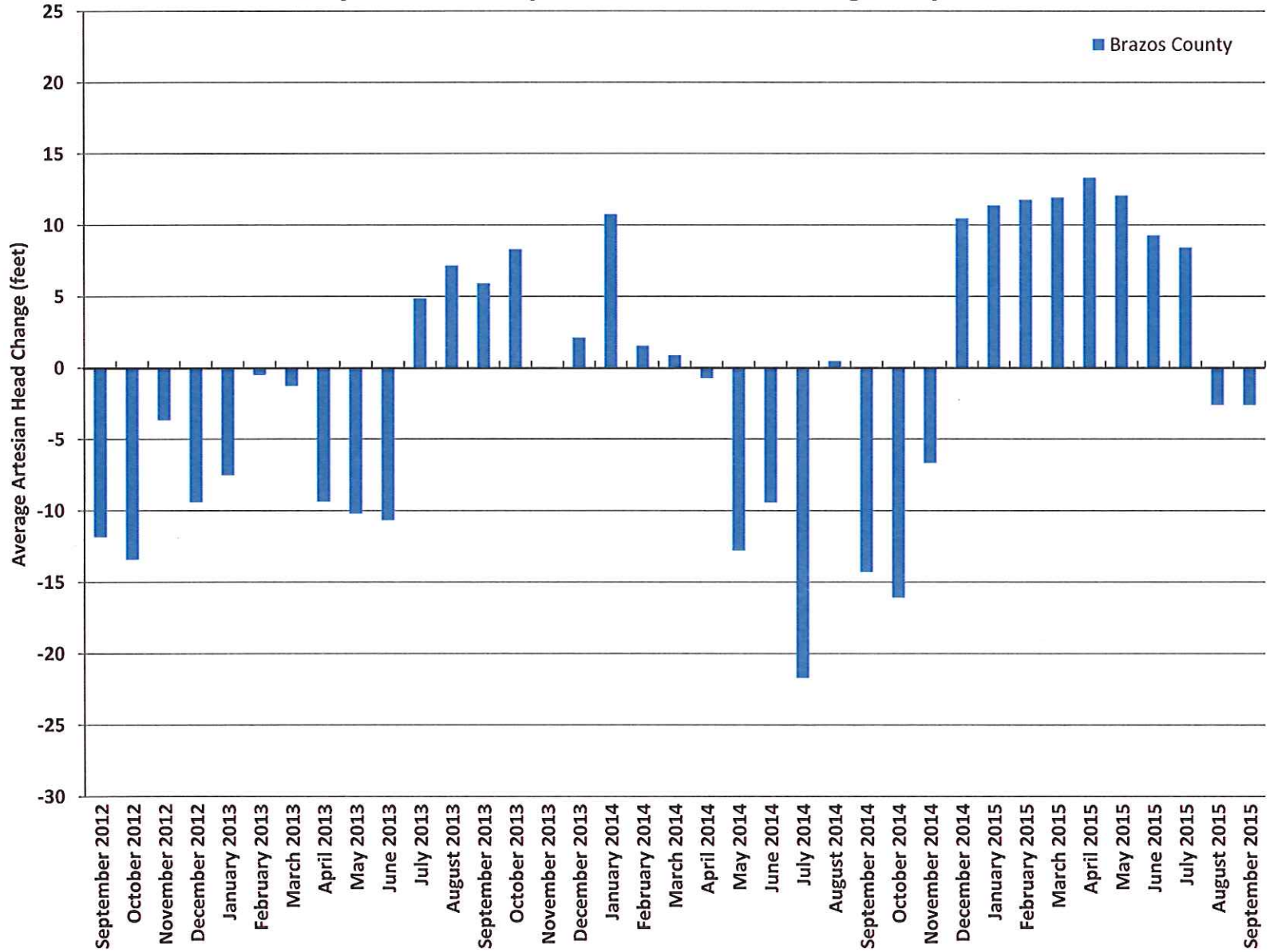
Average Static Water Level Change In Brazos River Alluvium Wells From Early 2012 to September 2012 through September 2015



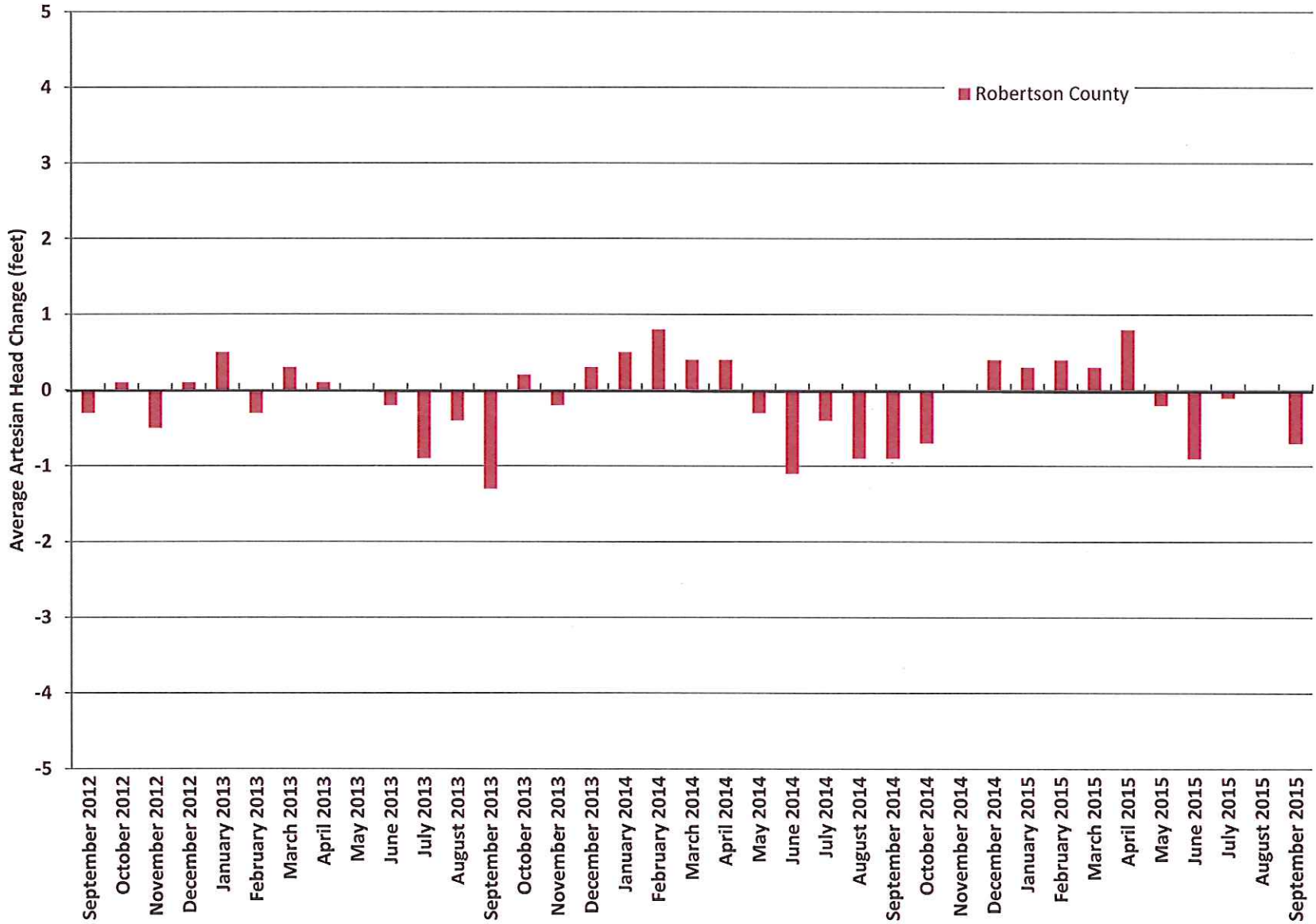
Average Artesian Head Change In Yegua-Jackson Aquifer Wells From Early 2012 to September 2012 through September 2015



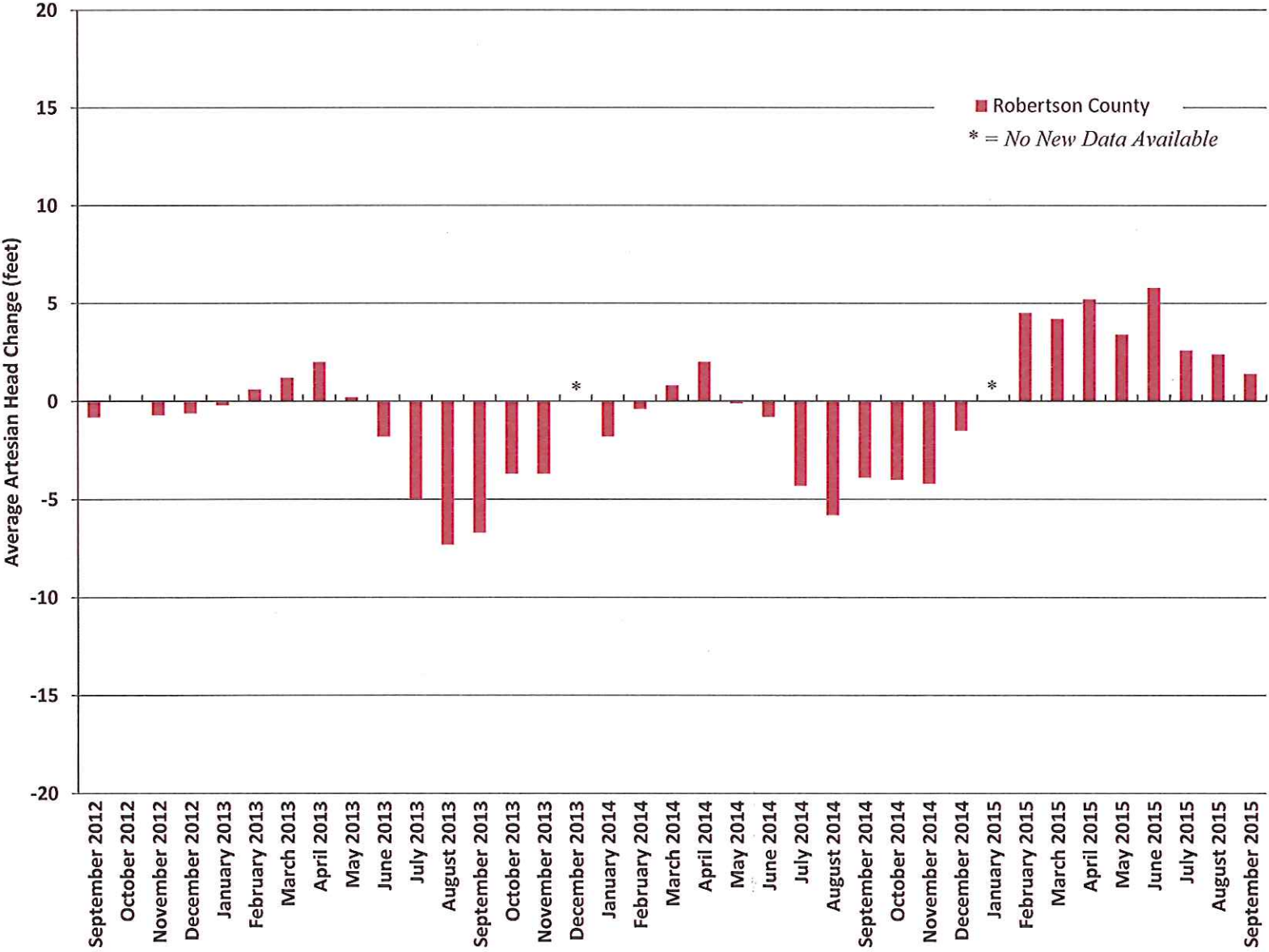
Average Artesian Head Change In Sparta Aquifer Wells From Early 2012 to September 2012 through September 2015



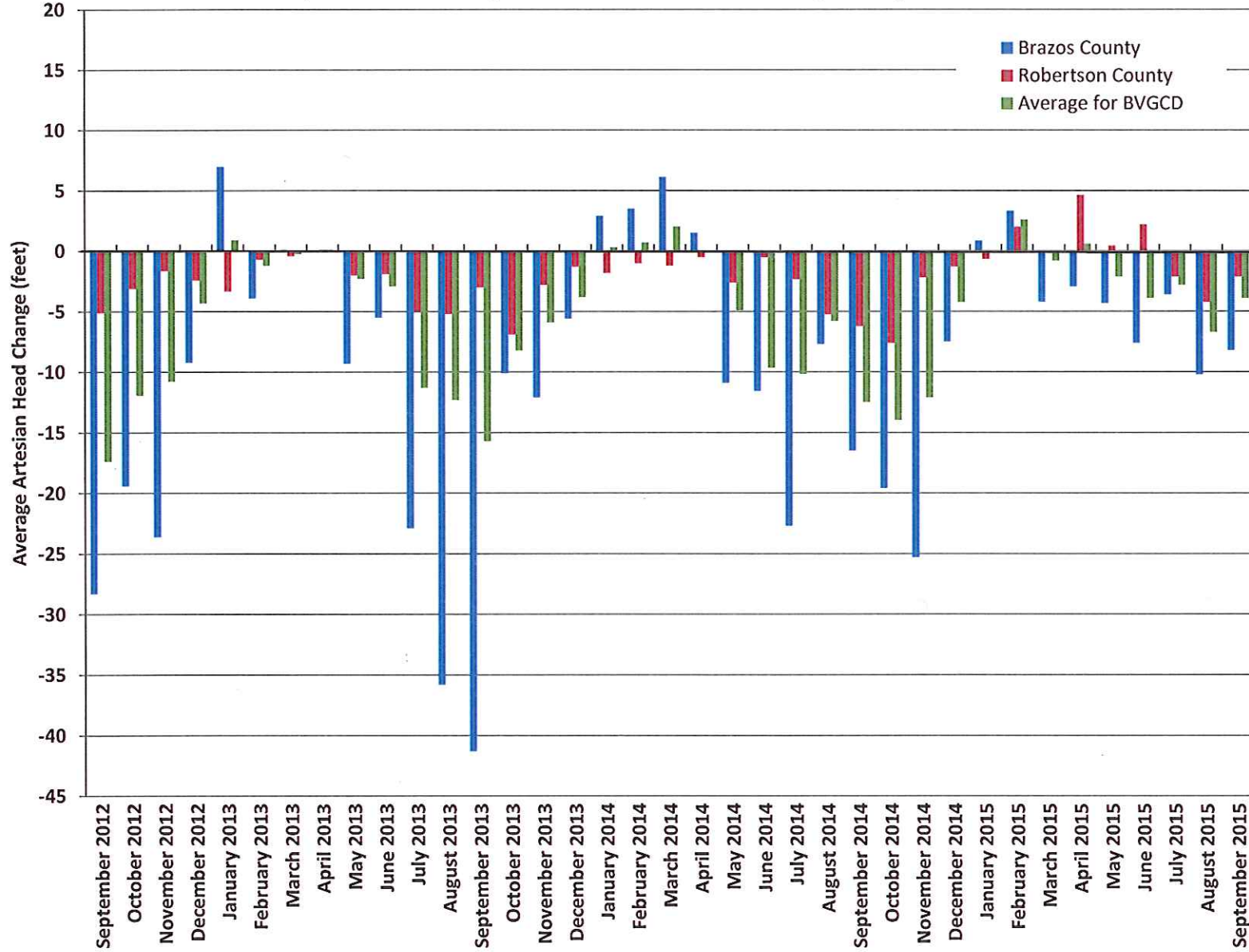
Average Artesian Head Change In Queen City Aquifer Wells From Early 2012 to September 2012 through September 2015



Average Artesian Head Change In Calvert Bluff Wells From Early 2012 to September 2012 through September 2015



Average Artesian Head Change In Simsboro Aquifer Wells From Early 2012 to September 2012 through September 2015



Average Artesian Head Change In Hooper Wells From Early 2012 to September 2012 through September 2015

