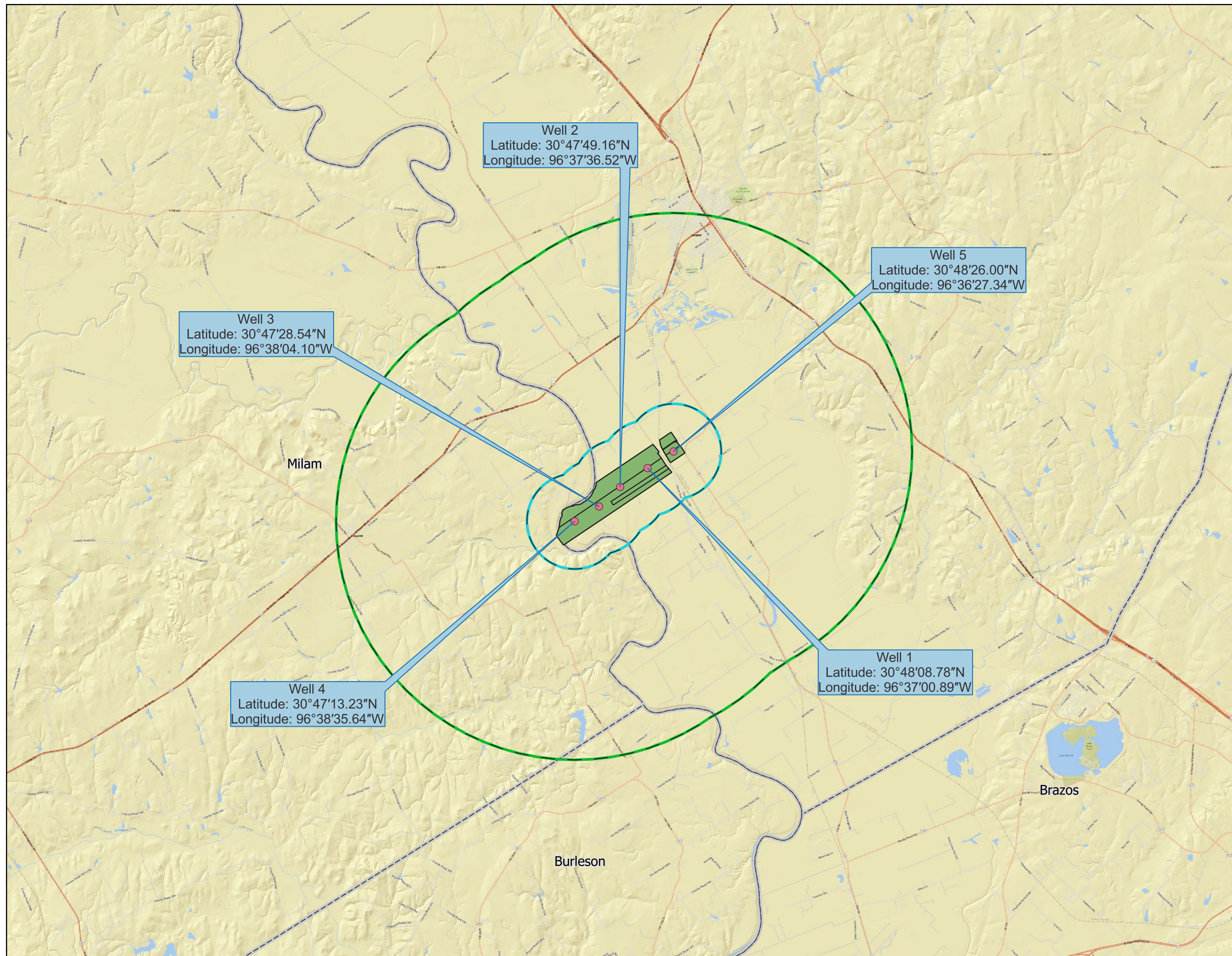


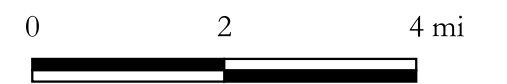
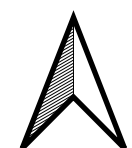


ATTACHMENT 1 –
FIGURES



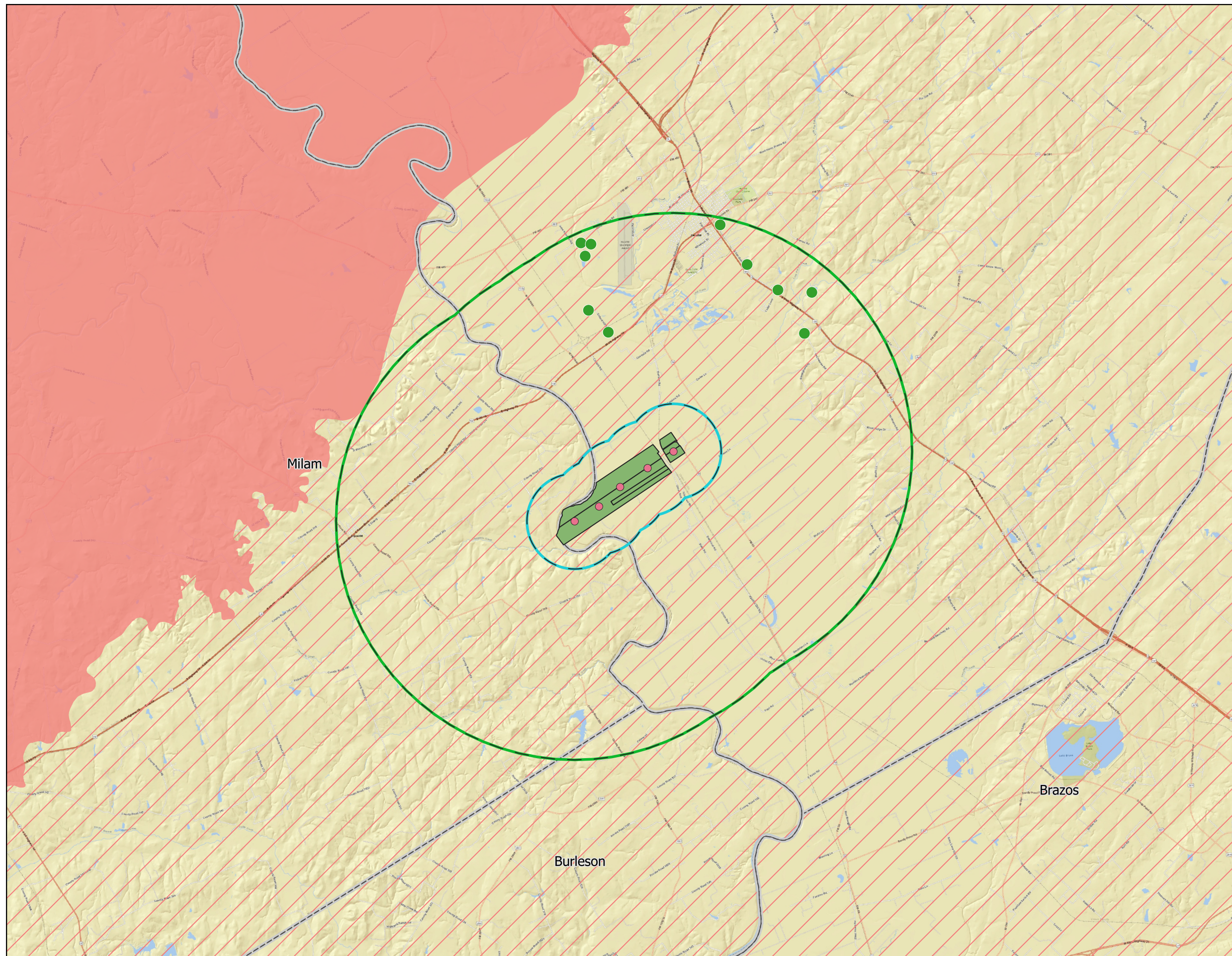
Explanation

- Proposed Wells
- 1 Mile Radius from Well Locations
- 5 Mile Radius from Well Locations
- Burnside Property
- Counties



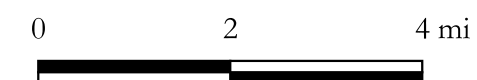
Burnside Investments, Inc.

Figure 1:
Location Map



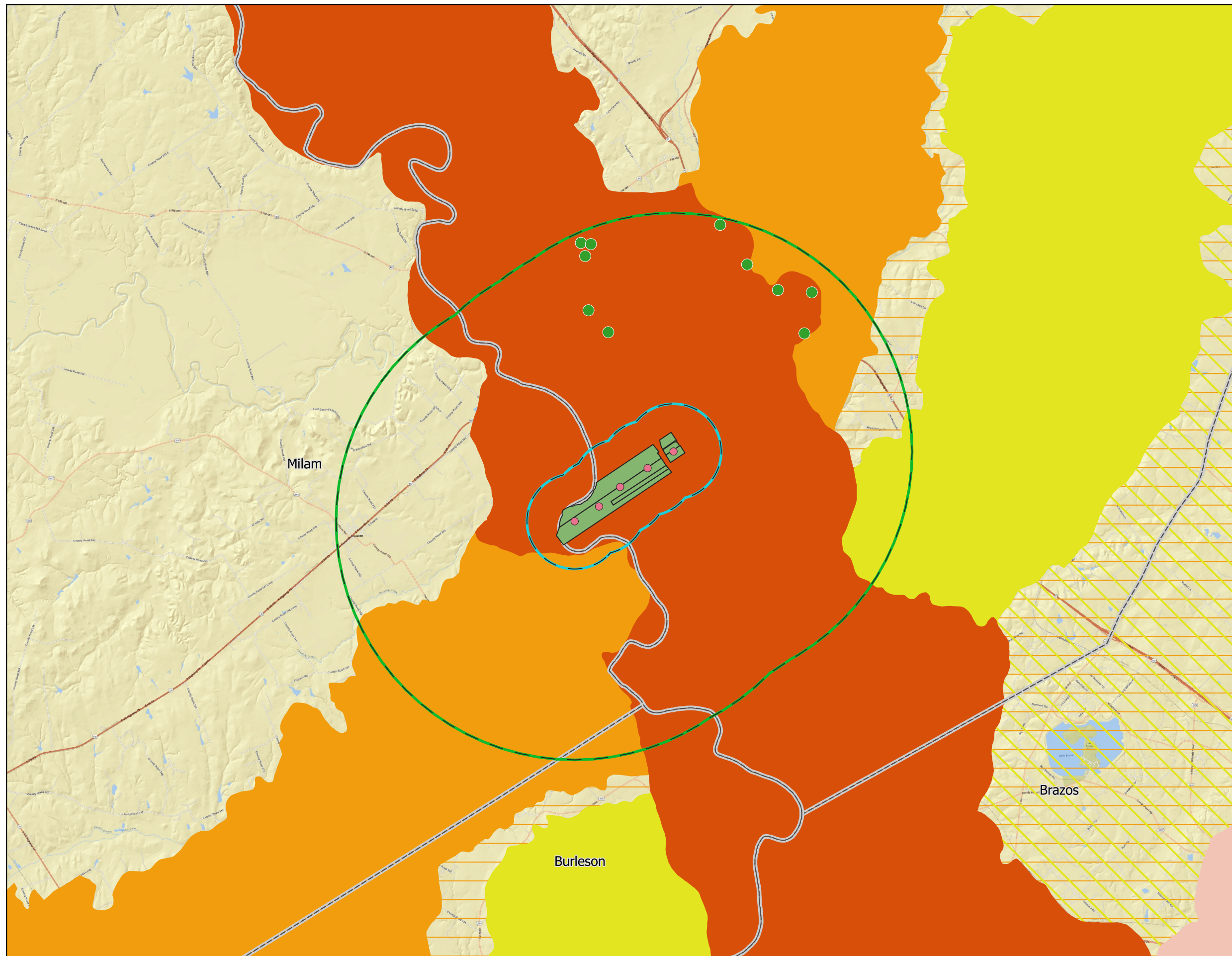
Explanation

- Proposed Wells
 - 1 Mile Radius from Well Locations
 - 5 Mile Radius from Well Locations
 - Burnside Property
 - ⋯ Counties
- Major Aquifers**
- Carrizo - Wilcox (outcrop)
 - ▨ Carrizo - Wilcox (subcrop)
- BVGCD Reported Wells w/in 5 Miles**
- Simsboro



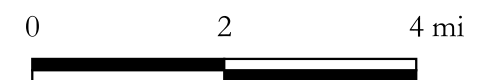
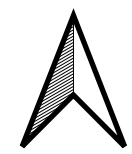
Burnside Investments, Inc.

Figure 2:
Major Aquifers



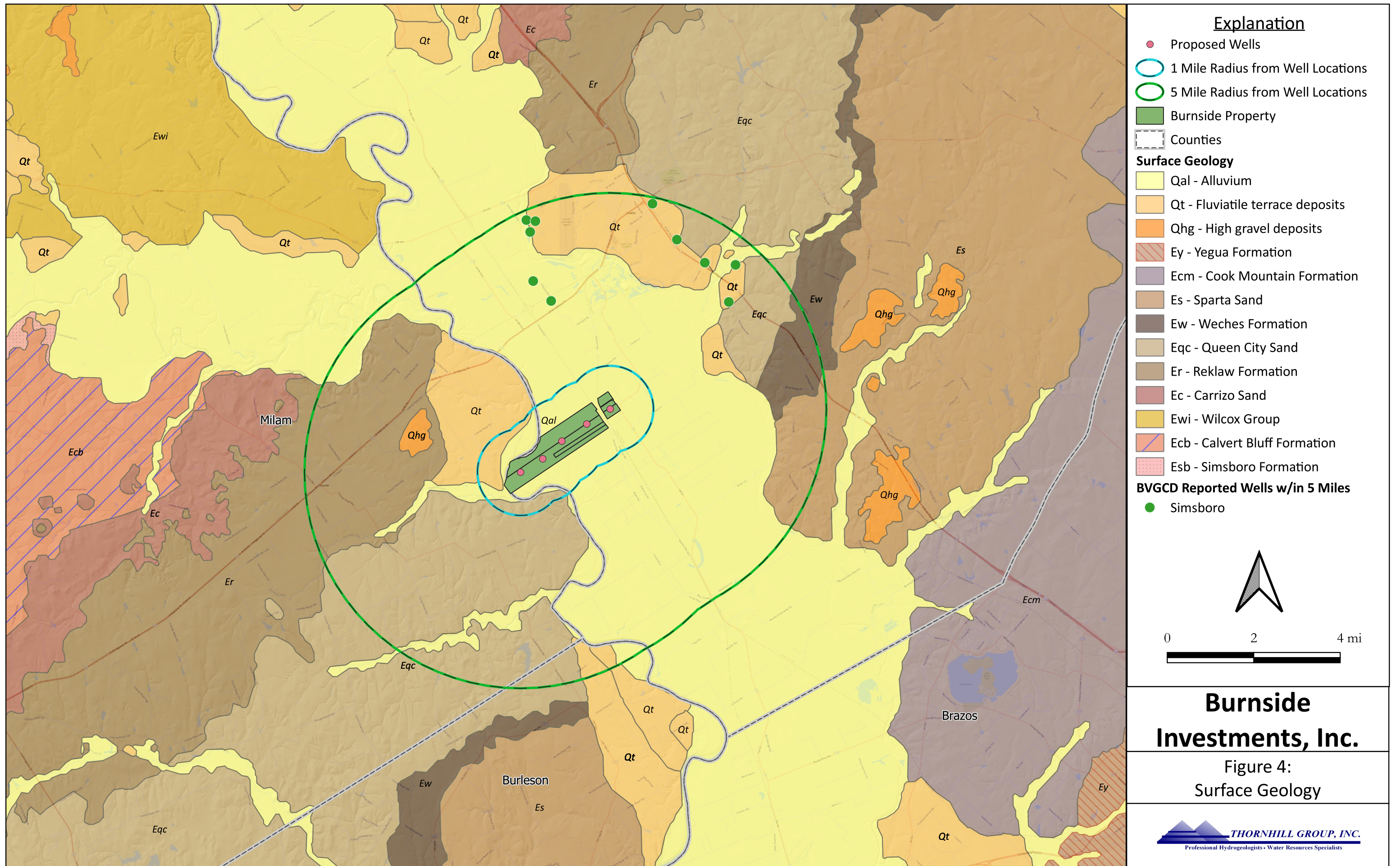
Explanation

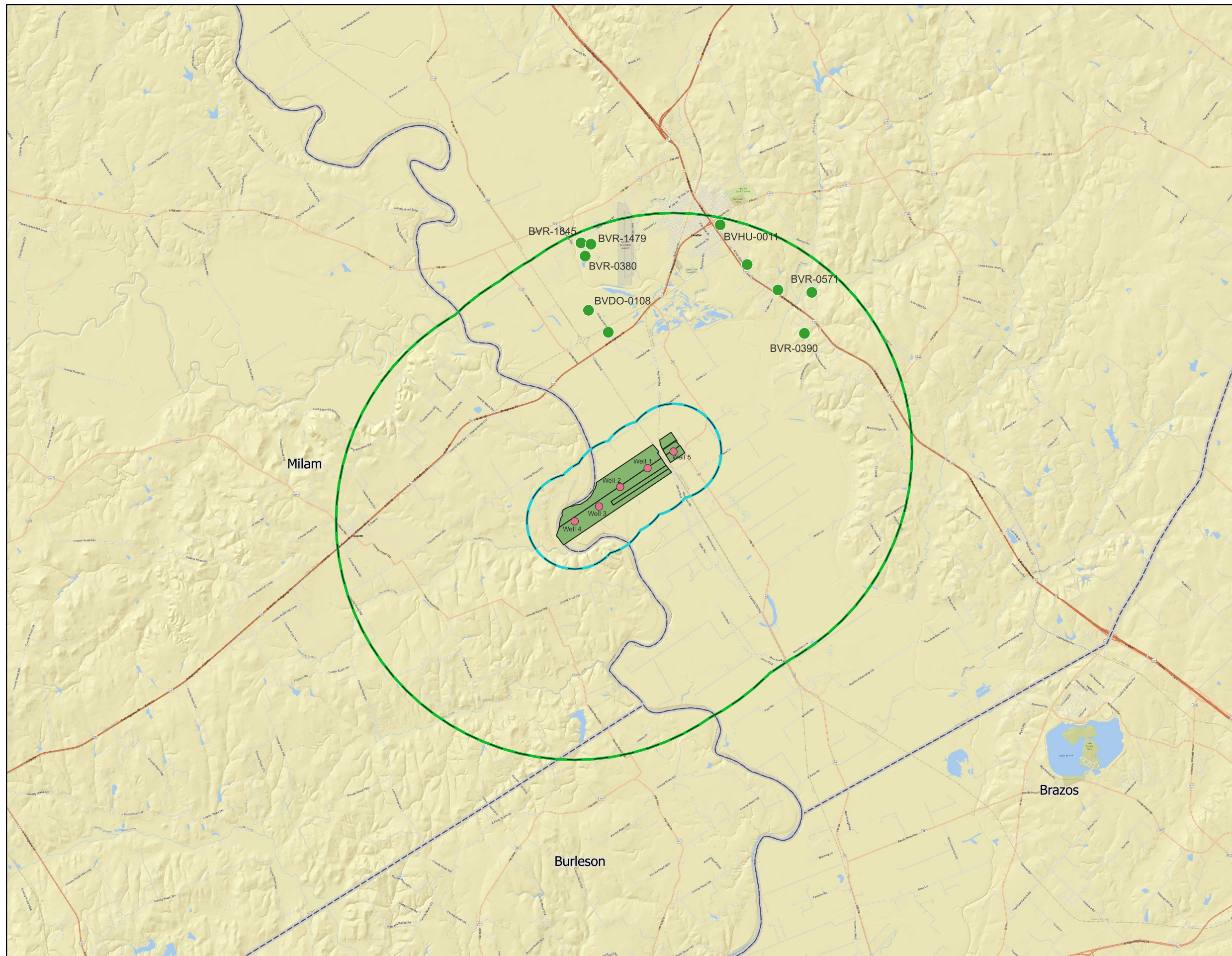
- Proposed Wells
 - 1 Mile Radius from Well Locations
 - 5 Mile Radius from Well Locations
 - Burnside Property
 - Counties
- Minor Aquifers**
- Brazos River Alluvium
 - Queen City (outcrop)
 - Queen City (subcrop)
 - Sparta (outcrop)
 - Sparta (subcrop)
 - Yegua Jackson
- BVGCD Reported Wells w/in 5 Miles**
- Simsboro



Burnside Investments, Inc.

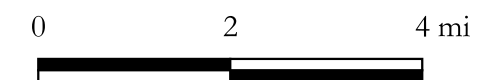
Figure 3:
Minor Aquifers





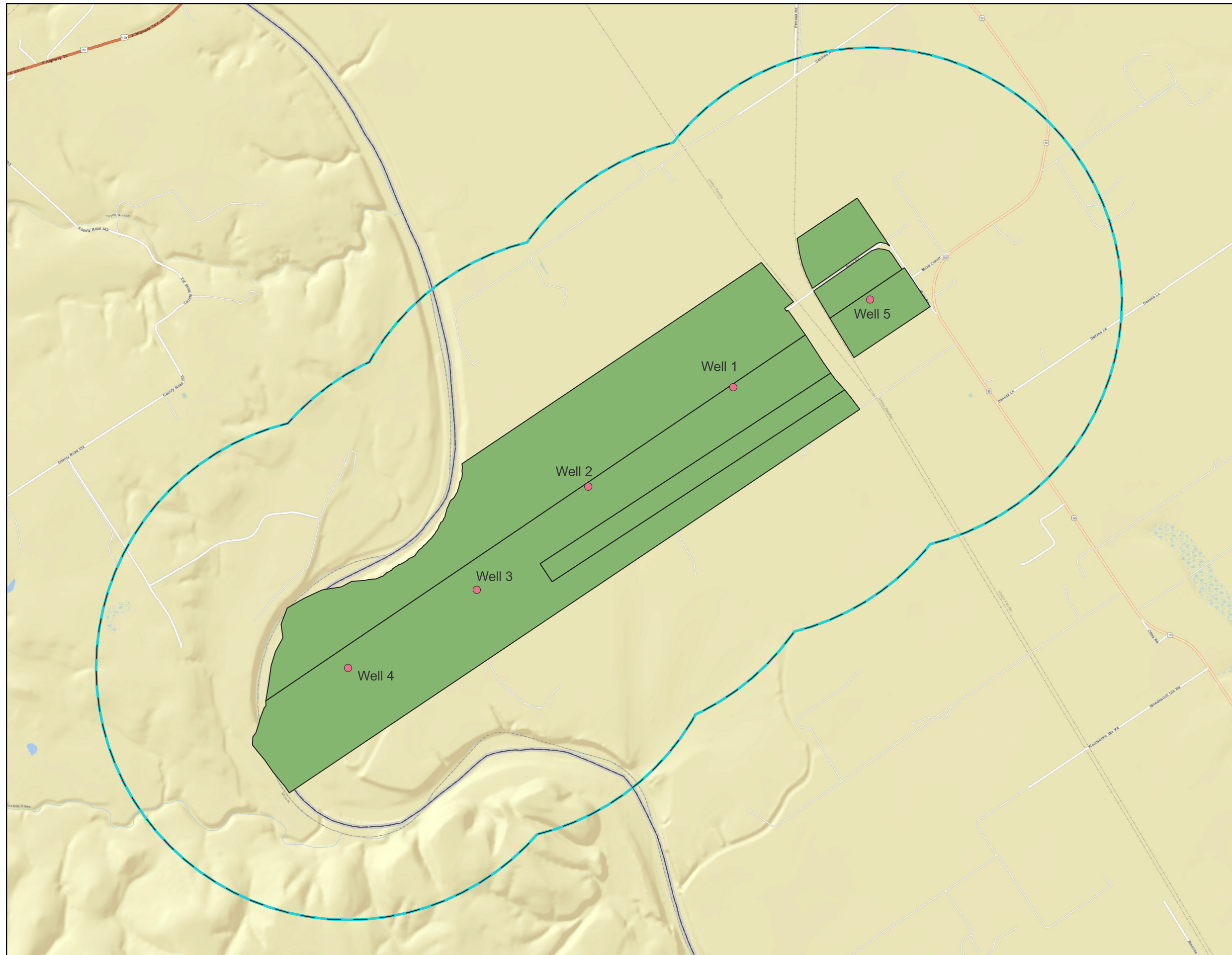
Explanation

- Proposed Wells
- 1 Mile Radius from Well Locations
- 5 Mile Radius from Well Locations
- Burnside Property
- ▭ Counties
- BVGCD Reported Wells w/in 5 Miles**
- Simsboro



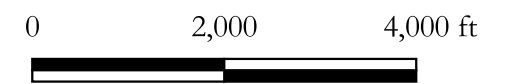
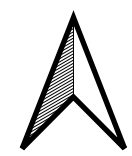
Burnside Investments, Inc.

Figure 5: Well Locations w/in 5 Miles of Proposed Wells



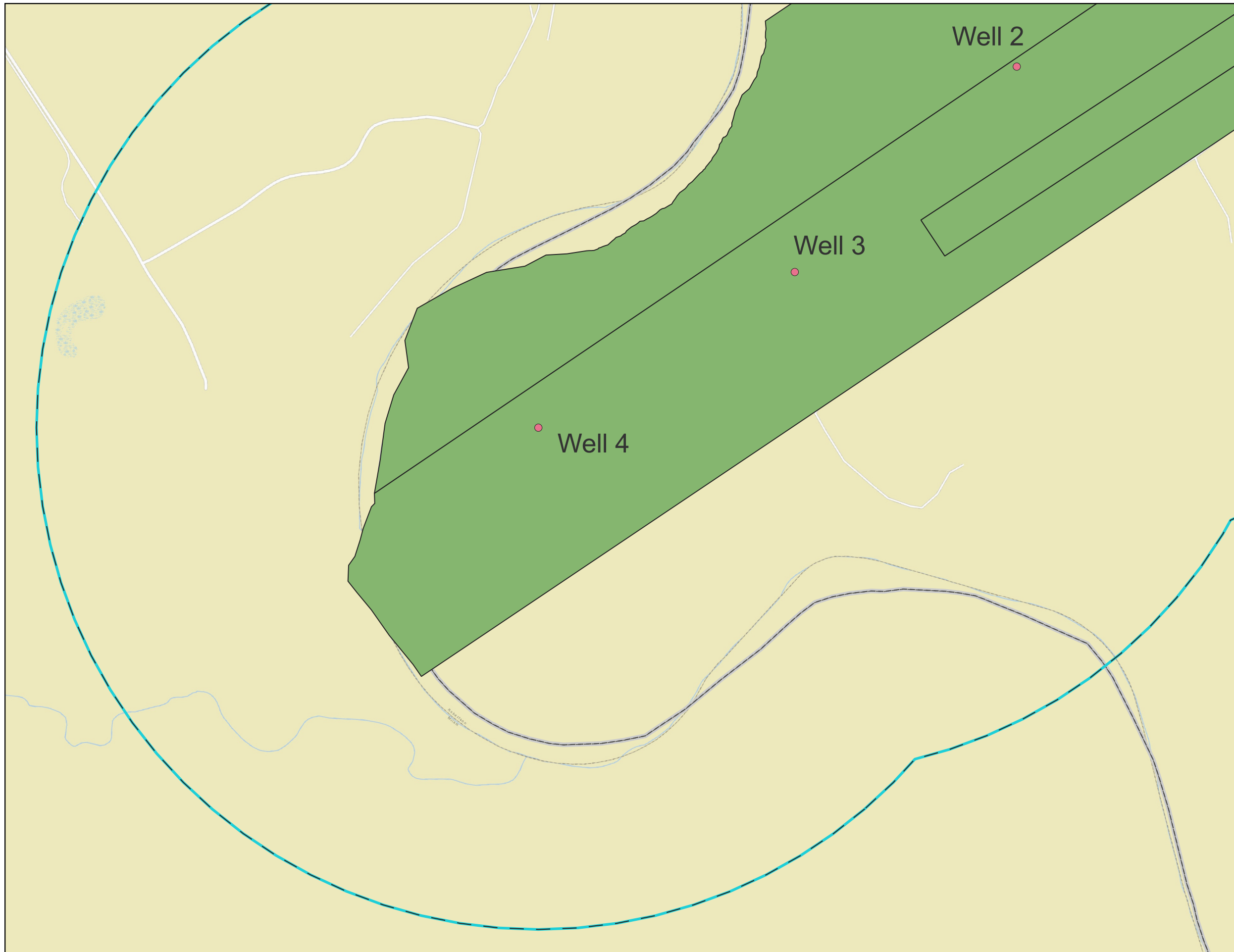
Explanation

- Proposed Wells
- 1 Mile Radius from Well Locations
- 5 Mile Radius from Well Locations
- Burnside Property
- ▭ Counties



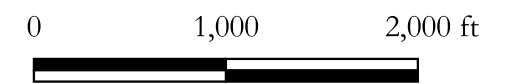
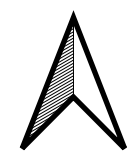
Burnside Investments, Inc.

Figure 6: Well Locations w/in 1 Mile of Proposed Wells



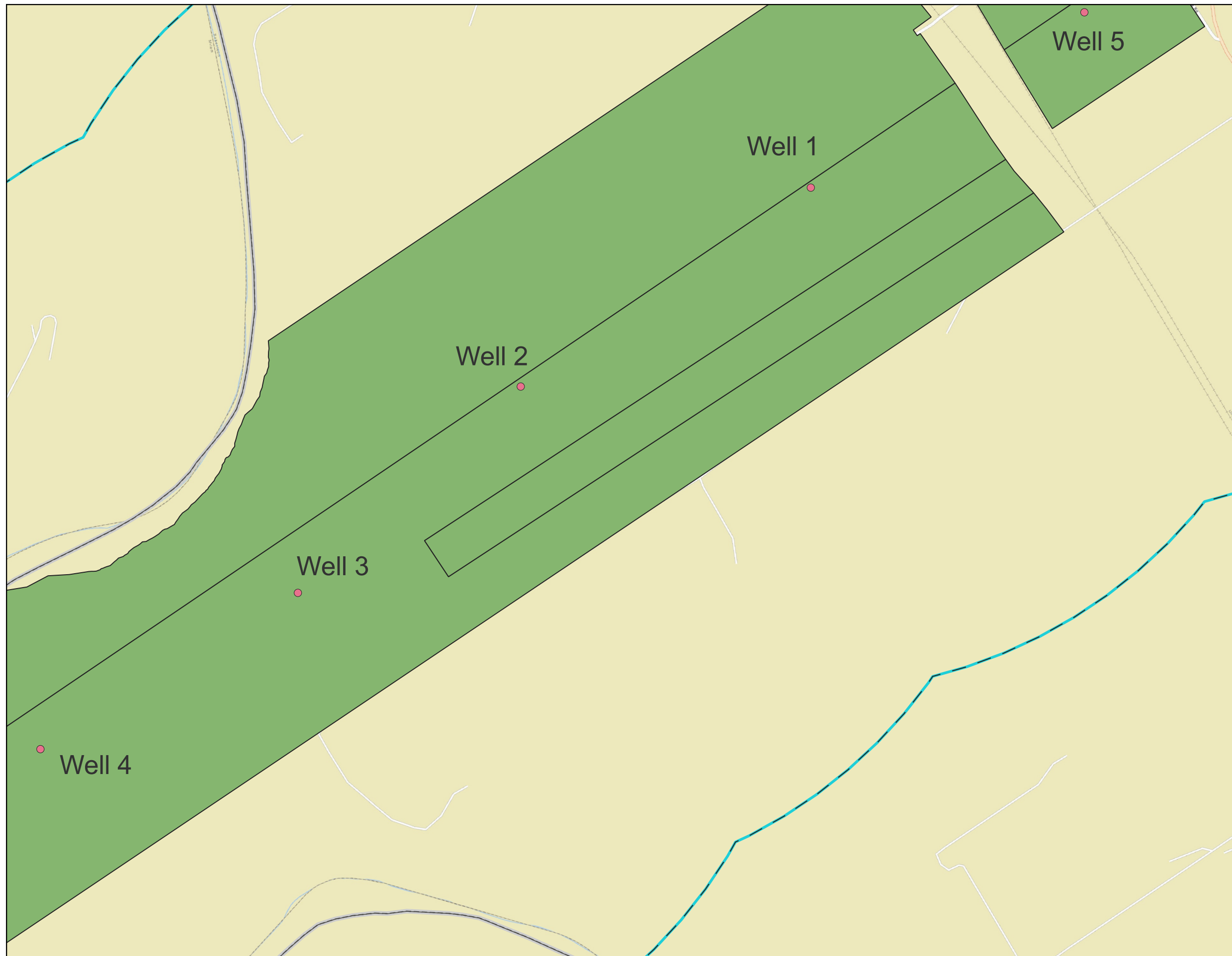
Explanation

- Proposed Wells
- 1 Mile Radius from Well Locations
- 5 Mile Radius from Well Locations
- Burnside Property
- ▭ Counties



Burnside Investments, Inc.

Figure 6a: Well Locations w/in 1 Mile of Proposed Wells



Explanation

- Proposed Wells
- 1 Mile Radius from Well Locations
- 5 Mile Radius from Well Locations
- Burnside Property
- Counties



0 1,000 2,000 ft

Burnside Investments, Inc.

Figure 6b: Well Locations w/in 1 Mile of Proposed Wells



Explanation

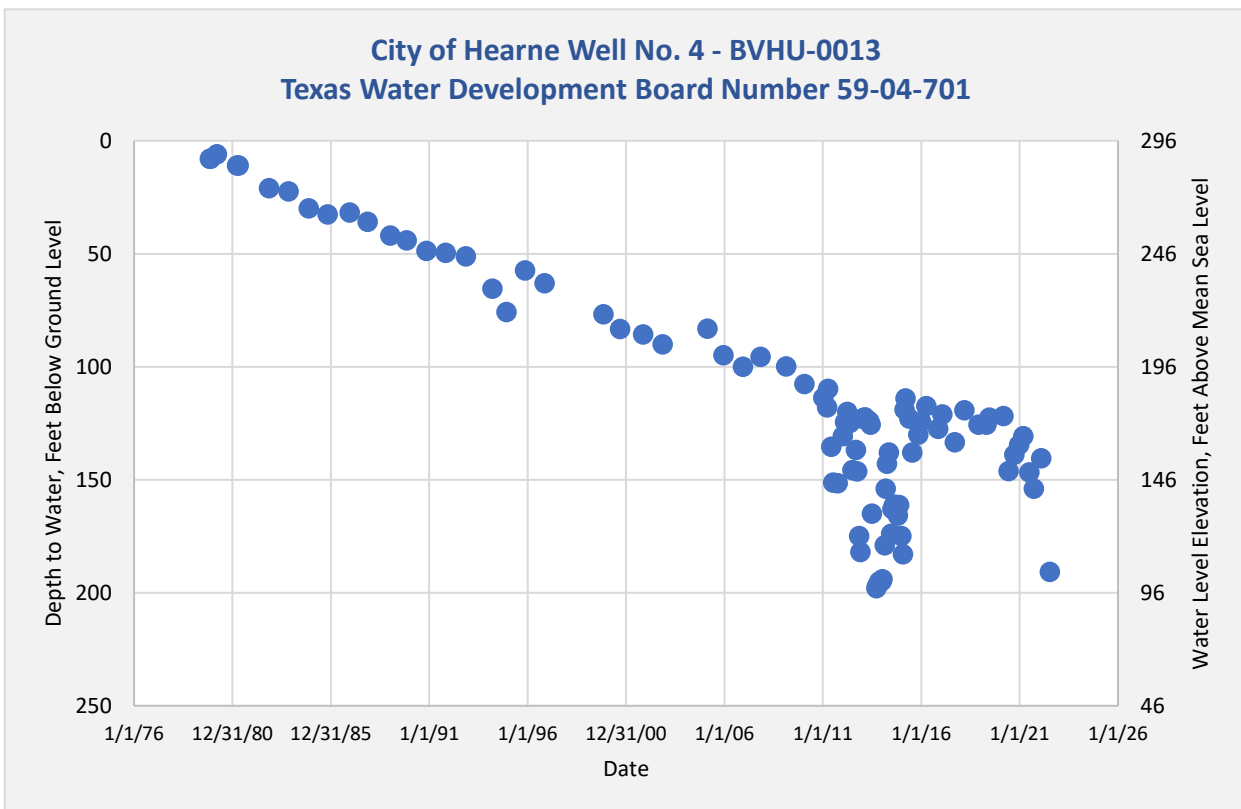
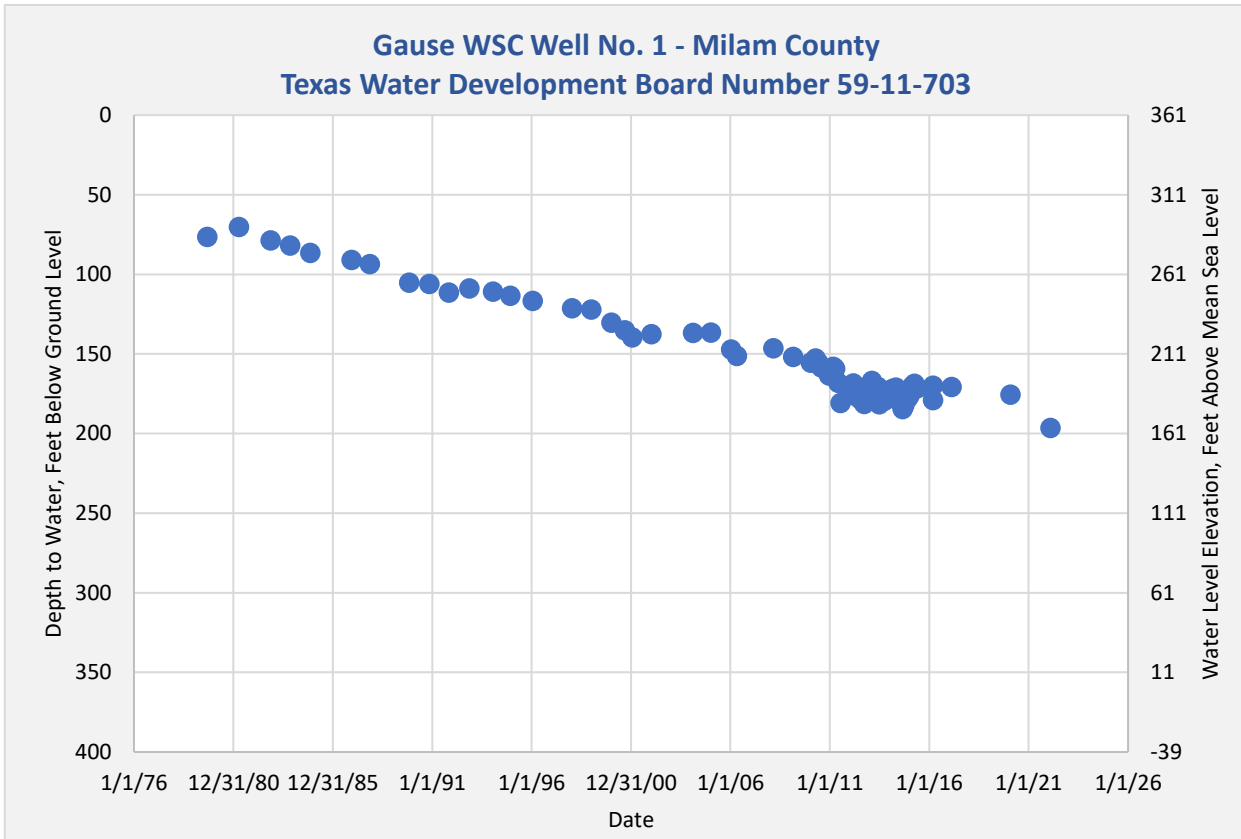
- Proposed Wells
- 1 Mile Radius from Well Locations
- 5 Mile Radius from Well Locations
- Burnside Property
- ⋯ Counties

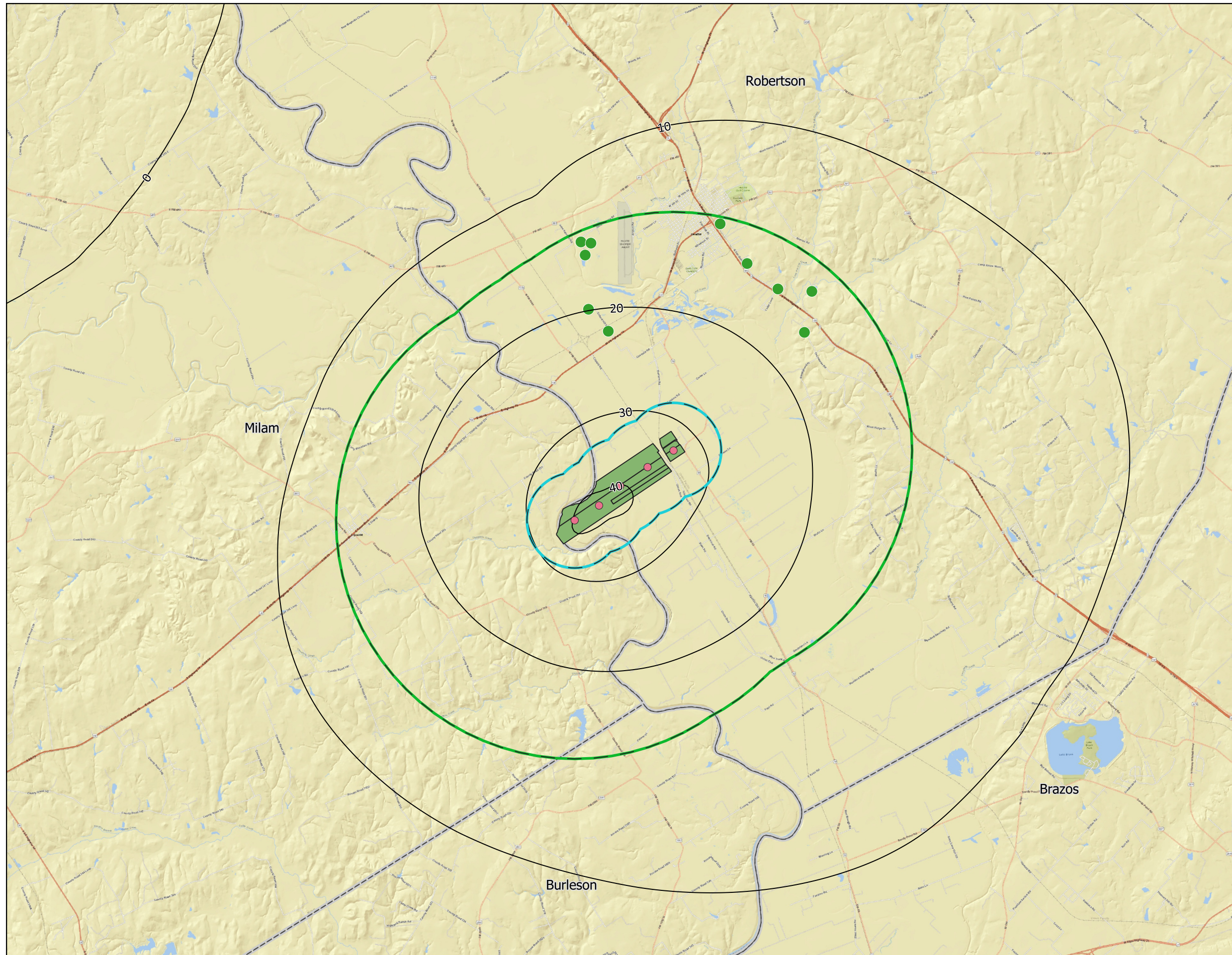


Burnside Investments, Inc.

Figure 6c: Well Locations w/in 1 Mile of Proposed Wells

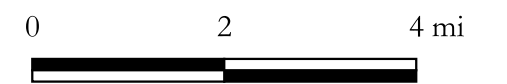
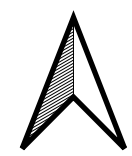
Figure 7





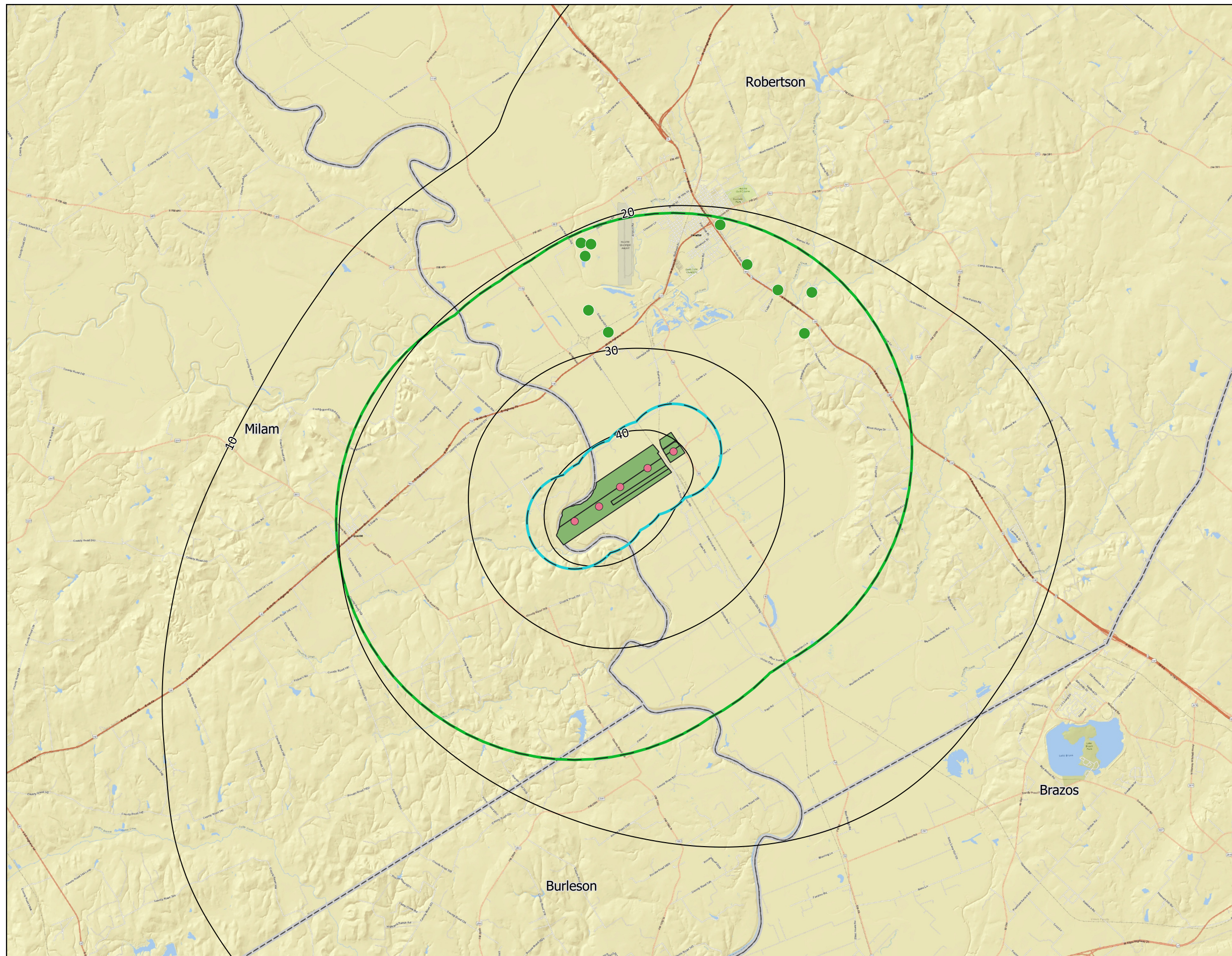
Explanation

- Proposed Wells
- 1 Mile Radius from Well Locations
- 5 Mile Radius from Well Locations
- 1-Year Modeled Drawdown - GAM
Contour Interval = 10 feet
- Burnsides Property
- Counties
- BVGCD Reported Wells w/in 5 Miles**
- Simsboro



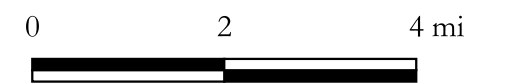
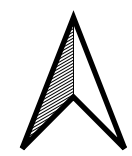
Burnside Investments, Inc.

Figure 8: 1-Year GAM Drawdown Contours



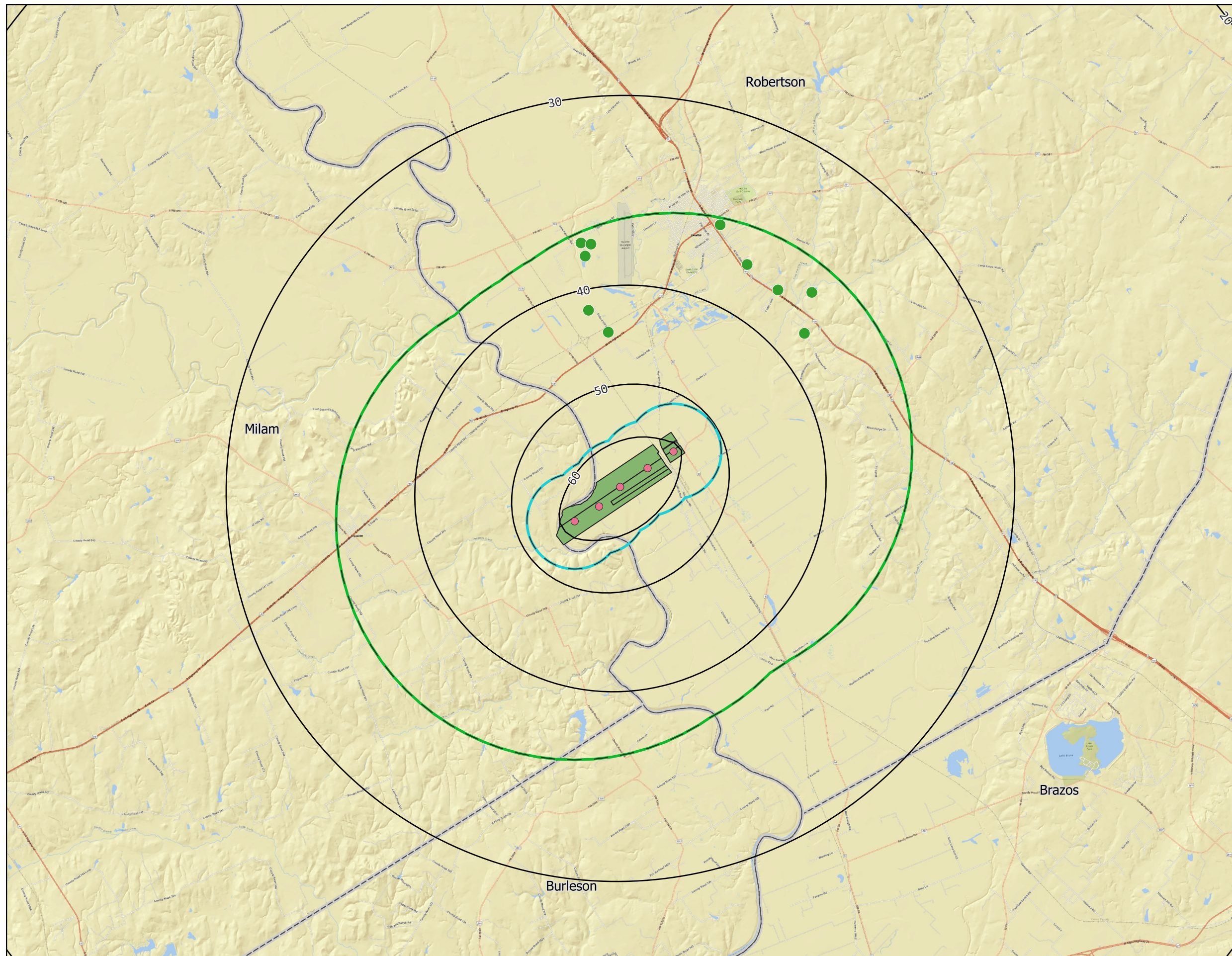
Explanation

- Proposed Wells
- 1 Mile Radius from Well Locations
- 5 Mile Radius from Well Locations
- 10-Year Modeled Drawdown - GAM
Contour Interval = 10 feet
- Burnside Property
- ▭ Counties
- BVGCD Reported Wells w/in 5 Miles**
- Simsboro



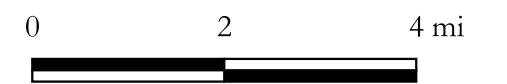
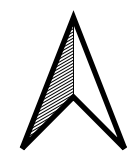
Burnside Investments, Inc.

Figure 9: 10-Year GAM Drawdown Contours



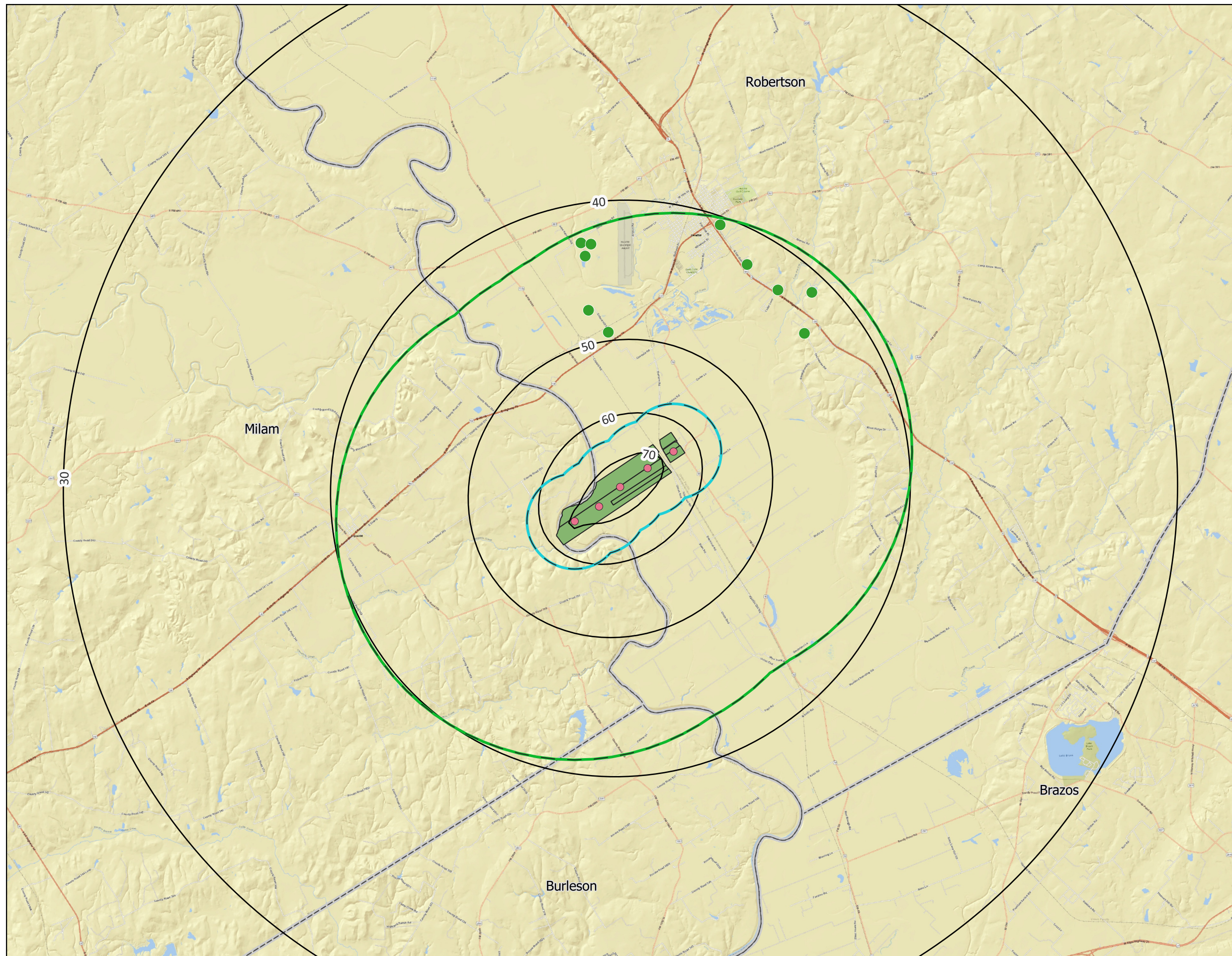
Explanation

- Proposed Wells
- 1 Mile Radius from Well Locations
- 5 Mile Radius from Well Locations
- 1-Yr Modeled Drawdown - Analytical
Contour Interval = 10 feet
- Burnsides Property
- ▭ Counties
- BVGCD Reported Wells w/in 5 Miles**
- Simsboro



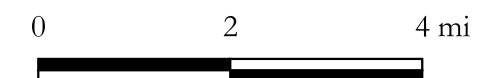
Burnside Investments, Inc.

Figure 10: 1-Year Analytical Drawdown Contours



Explanation

- Proposed Wells
- 1 Mile Radius from Well Locations
- 5 Mile Radius from Well Locations
- 10-Yr Modeled Drawdown - Analytical
Contour Interval = 10 feet
- Burnside Property
- Counties
- BVGCD Reported Wells w/in 5 Miles**
- Simsboro



**Burnside
Investments, Inc.**

Figure 11: 10-Year Analytical
Drawdown Contours