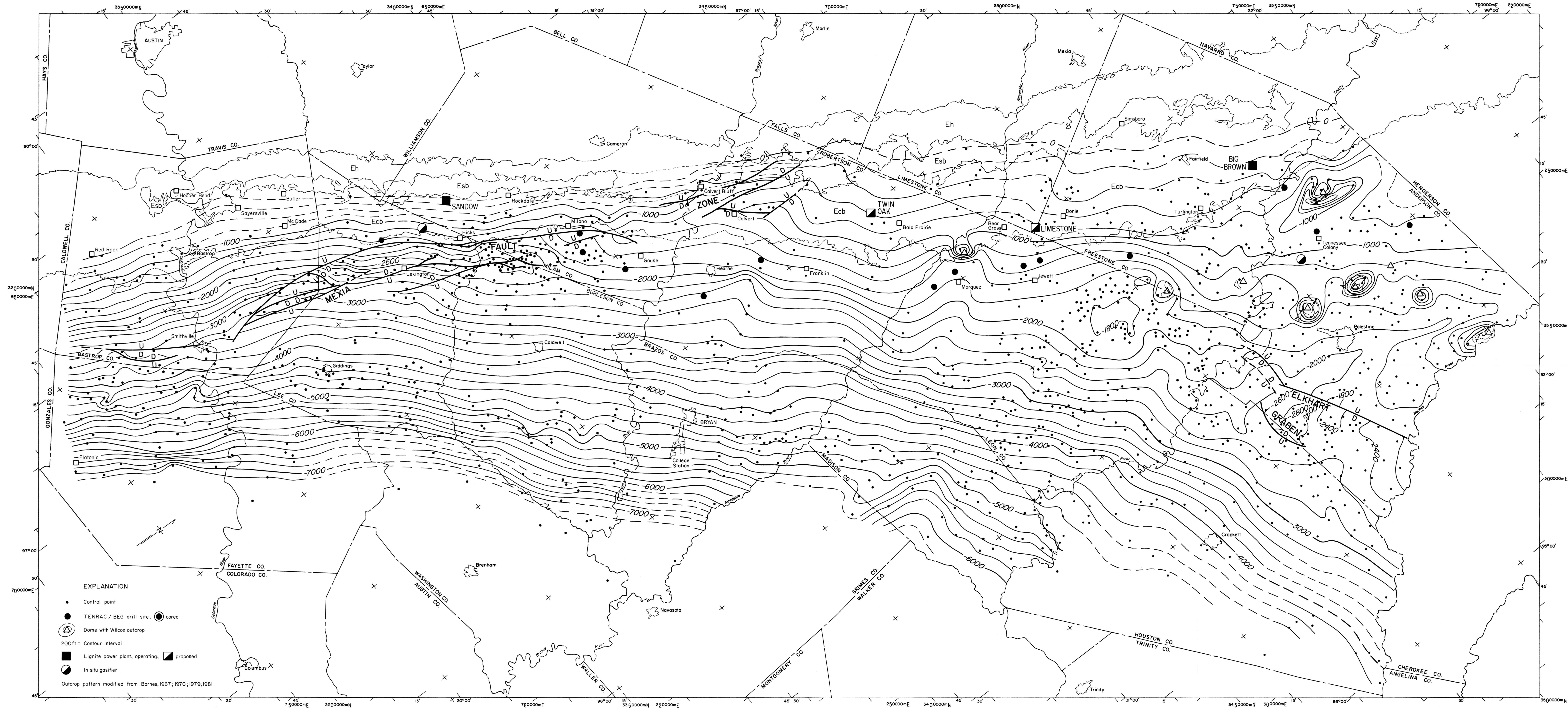




ATTACHMENT 3 –
REFERENCE MATERIALS



- EXPLANATION**
- Control point
 - TENRAC / BEG drill site; ● cored
 - ⊙ Dome with Wilcox outcrop
 - 200ft = Contour interval
 - Lignite power plant, operating; ▨ proposed
 - ⊙ In situ gasifier
- Outcrop pattern modified from Barnes, 1967, 1970, 1979, 1981

- Ecb Calvert Bluff Formation
- Esb Simsboro Formation
- Eh Hooper Formation

Base map adapted from Army Map Service base maps, 10,000-meter Universal Transverse Mercator grid, zones 14 and 15. Cartography by John T. Ames under the supervision of Richard L. Dillon.

by W. B. Ayers, Jr., and Amy H. Lewis

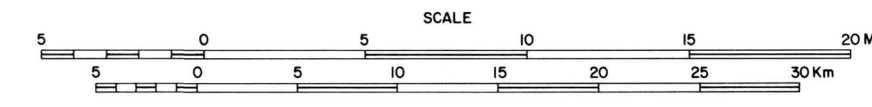
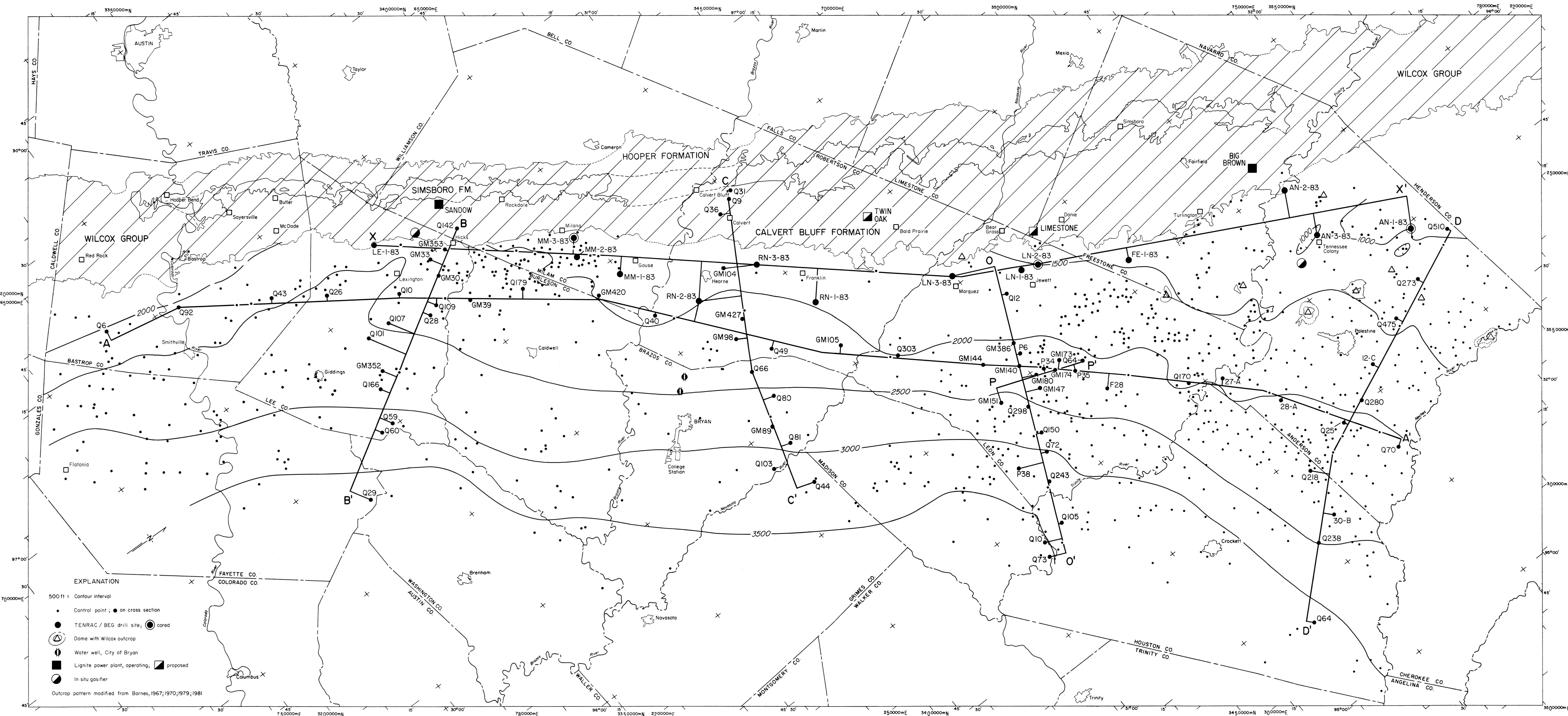


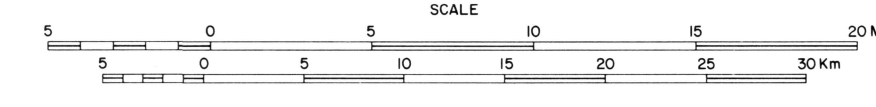
PLATE 2. WILCOX STRUCTURE MAP

1985

Generalized structure map drawn on the base of the Wilcox Group (sea-level datum) shows regional dip to the southeast. The angle of dip increases from the northeast (1/2°) to the southwest (2°). Major structural elements are the Mexia Fault Zone, the Elkhart Graben, salt structures in Anderson and Freestone Counties, and the East Texas Basin (fig. 2).



- EXPLANATION**
- 500 ft = Contour interval
 - Control point; ● on cross section
 - TENRAC / BEG drill site; ● cored
 - ⊙ Dome with Wilcox outcrop
 - ⊕ Water well, City of Bryan
 - Lignite power plant, operating; ▣ proposed
 - ⊙ In situ gasifier
- Outcrop pattern modified from Barnes, 1967; 1970; 1979; 1981



Base map adapted from Army Map Service base maps. 10,000-meter Universal Transverse Mercator grid, zones 14 and 15. Cartography by John T. Ames under the supervision of Richard L. Dillon.

PLATE 3. WILCOX ISOPACH MAP AND LOCATIONS OF CROSS SECTIONS

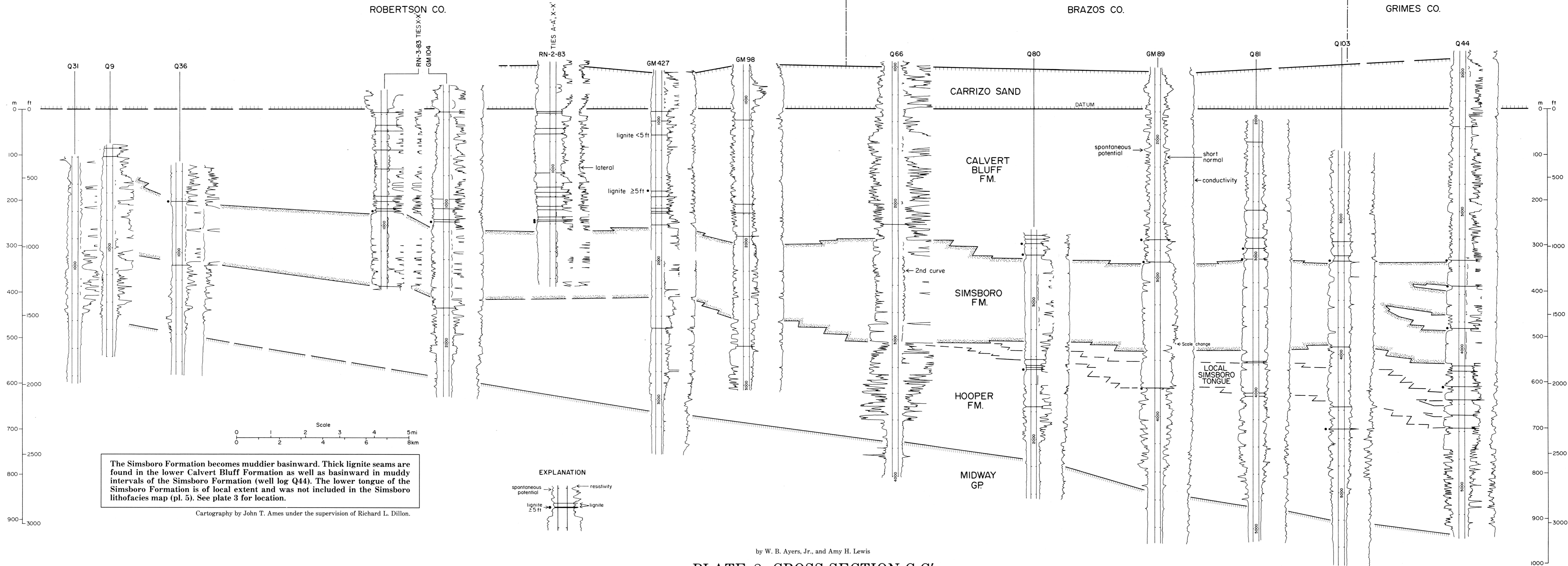
The Wilcox Group thickens from less than 1,000 ft (305 m) on the north to more than 3,500 ft (1,065 m) at the basinward margin of the study area. The local increase in thickness in central Lee County is attributed to syndepositional movement along the Mexia Fault Zone (fig. 2 and pl. 2).

C

NORTHWEST

C'

SOUTHEAST



The Simsboro Formation becomes muddier basinward. Thick lignite seams are found in the lower Calvert Bluff Formation as well as basinward in muddy intervals of the Simsboro Formation (well log Q44). The lower tongue of the Simsboro Formation is of local extent and was not included in the Simsboro lithofacies map (pl. 5). See plate 3 for location.

Cartography by John T. Ames under the supervision of Richard L. Dillon.

EXPLANATION

spontaneous potential

resistivity

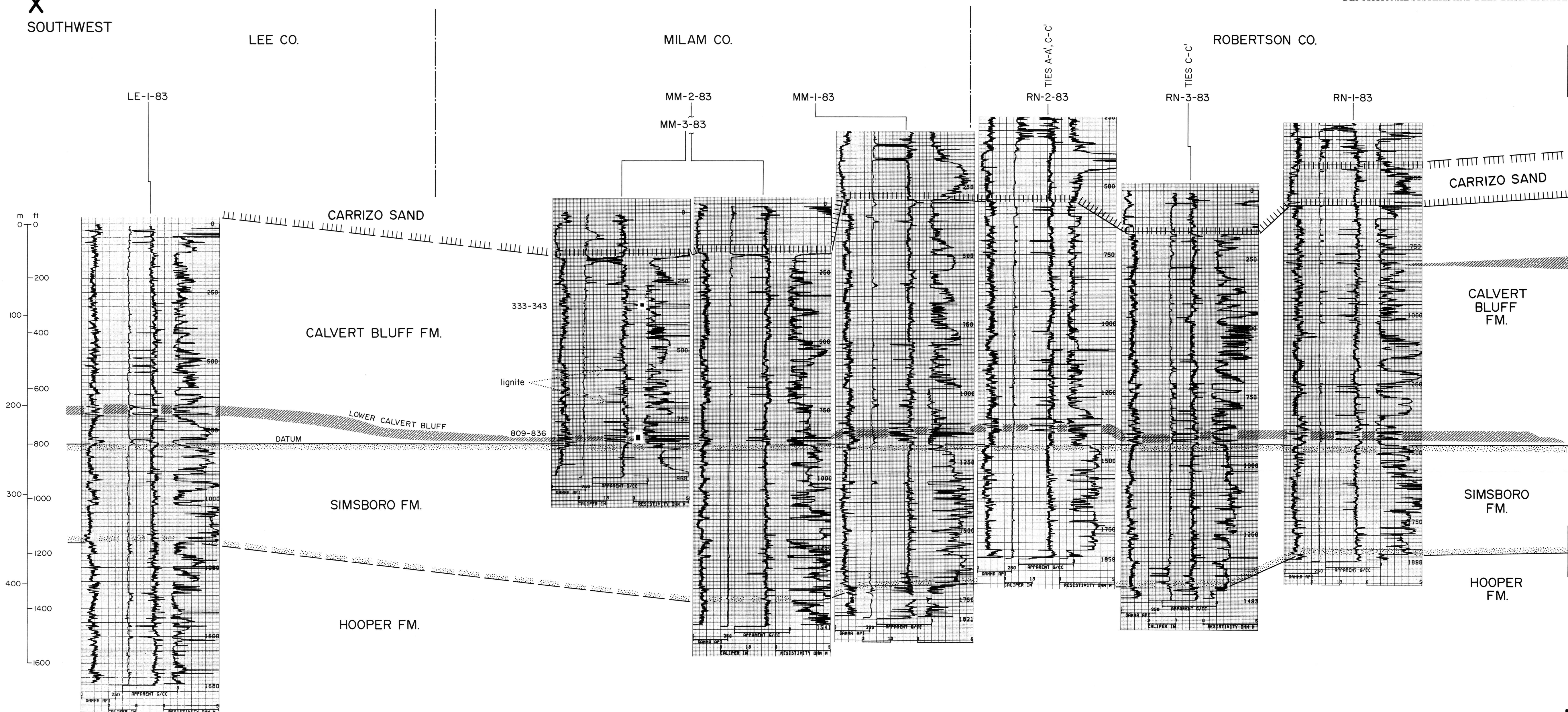
lignite <5 ft

lignite ≥5 ft

by W. B. Ayers, Jr., and Amy H. Lewis

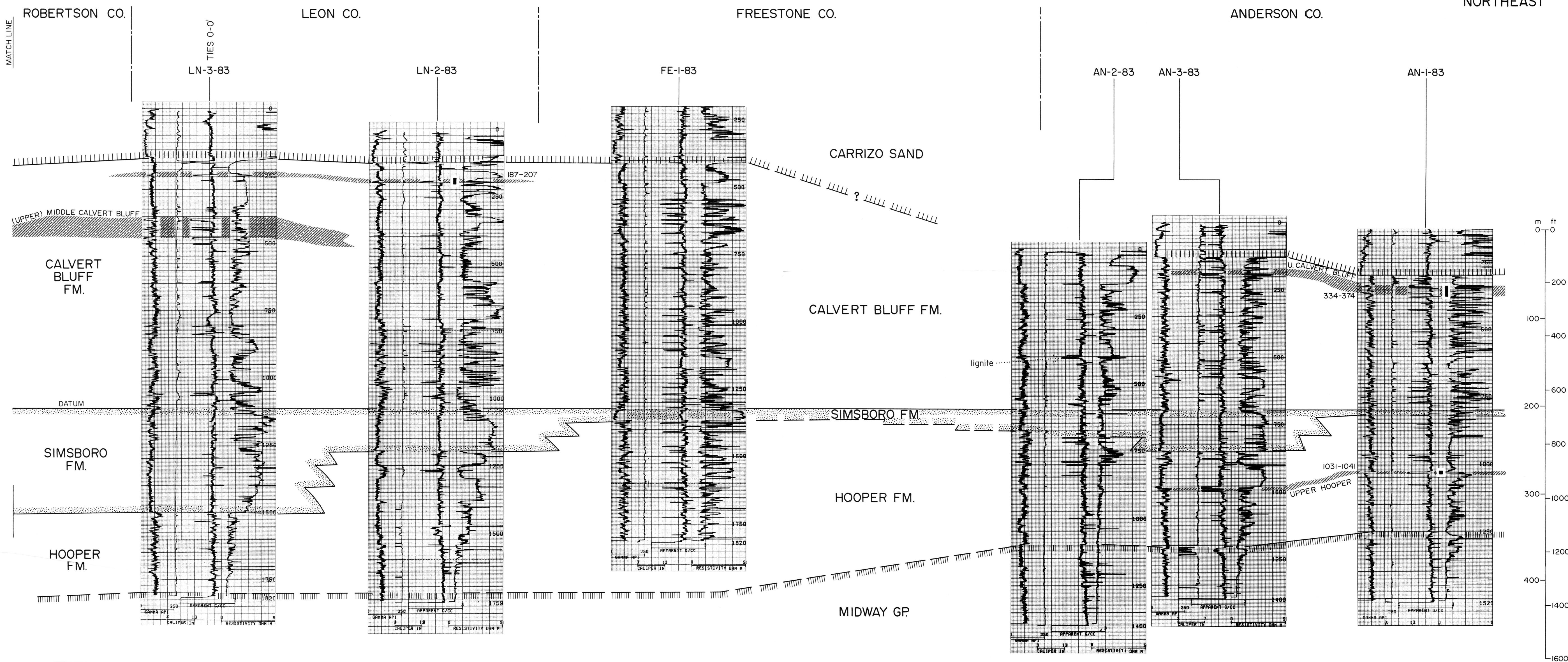
PLATE 8. CROSS SECTION C-C'
 1985

X
SOUTHWEST



MATCH LINE

X'
NORTHEAST



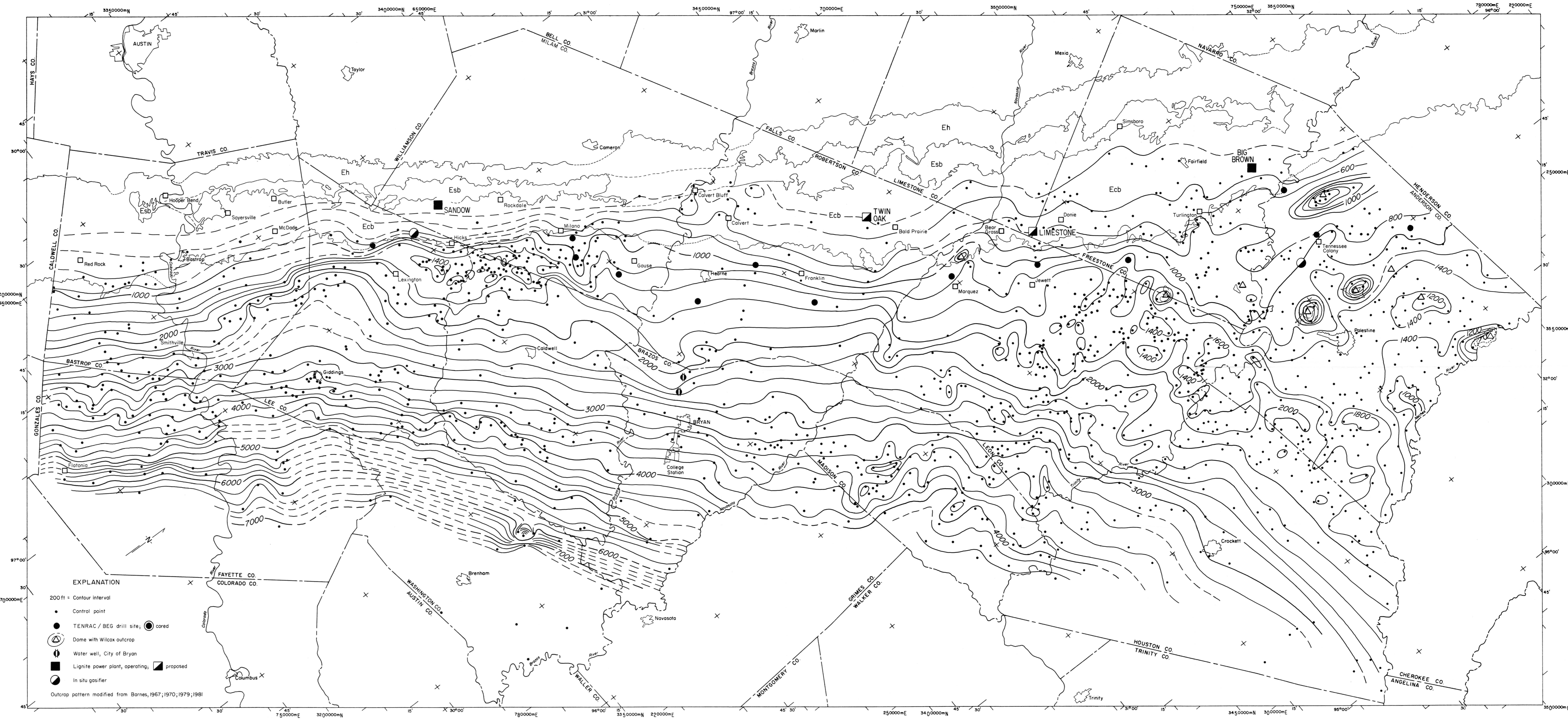
Geophysical logs from Texas Energy and Natural Resources Advisory Council/Bureau of Economic Geology wells show the stratigraphic occurrence of deep lignite (200 to 2,000 ft [61 to 610 m]) in east-central Texas. Thick lignite seams (seams 5 ft [1.5 m] or thicker) are found in the (a) upper Hooper Formation on the northeast, (b) lower Calvert Bluff Formation on the southwest, and (c) upper Calvert Bluff Formation on the northeast. Lateral continuity of individual lignite seams within the zones is neither implied nor true; wells were drilled in low-sand (floodbasin) areas between major-sand axes, which limit seam continuity. See plate 3 for location. Full-scale geophysical well logs are available from the Bureau of Economic Geology.

by W. B. Ayers, Jr., and Amy H. Lewis

PLATE 22. LIGNITE CROSS SECTION X-X'
1985

EXPLANATION
Zone of thick lignite
(1 or more seams ≥5 ft [1.5 m])
333-343 ■ Cored interval

Cartography by John T. Ames under the supervision of Richard L. Dillon.



- EXPLANATION**
- 200 ft = Contour interval
 - Control point
 - TENRAC / BEG drill site; ● cored
 - ⊙ Dome with Wilcox outcrop
 - ⊕ Water well, City of Bryan
 - Lignite power plant, operating; ▣ proposed
 - ⊙ In situ gasifier
- Outcrop pattern modified from Barnes, 1967; 1970; 1979; 1981

- Ecb Calvert Bluff Formation
- Esb Simsboro Formation
- Eh Hooper Formation

Base map adapted from Army Map Service base maps, 10,000-meter Universal Transverse Mercator grid, zones 14 and 15. Cartography by John T. Ames under the supervision of Richard L. Dillon.

by W. B. Ayers, Jr., and Amy H. Lewis

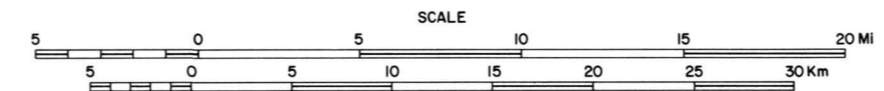


PLATE 28. SIMSBORO OVERBURDEN MAP

1985

The depth to the top of the Simsboro (Simsboro overburden) provides an estimate of the depth required to test the entire lignite-bearing Calvert Bluff Formation.

04E1984-28