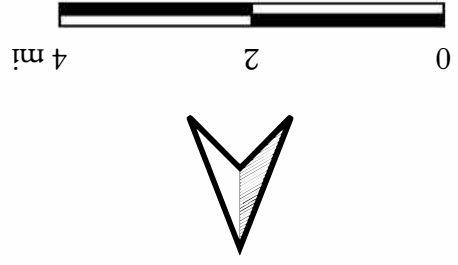




ATTACHMENT 1 –
FIGURES

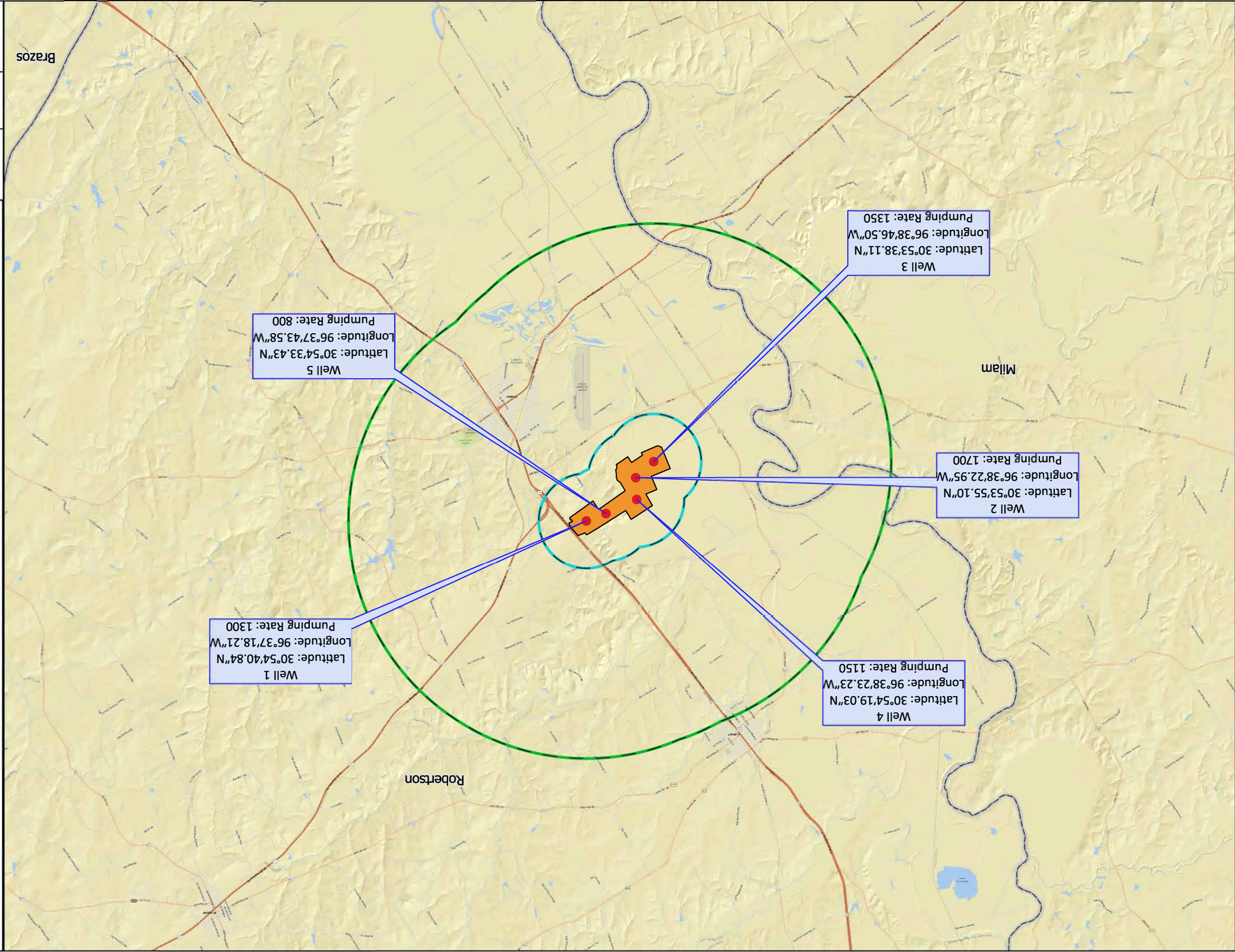
Figure 1:
Location Map

RHF, LLC



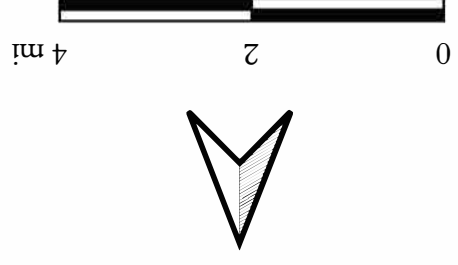
Explanation

- Proposed Wells
- Red Hill Farms Property
- 1 Mile Radius from Well Locations
- 5 Mile Radius from Well Locations
- Counties



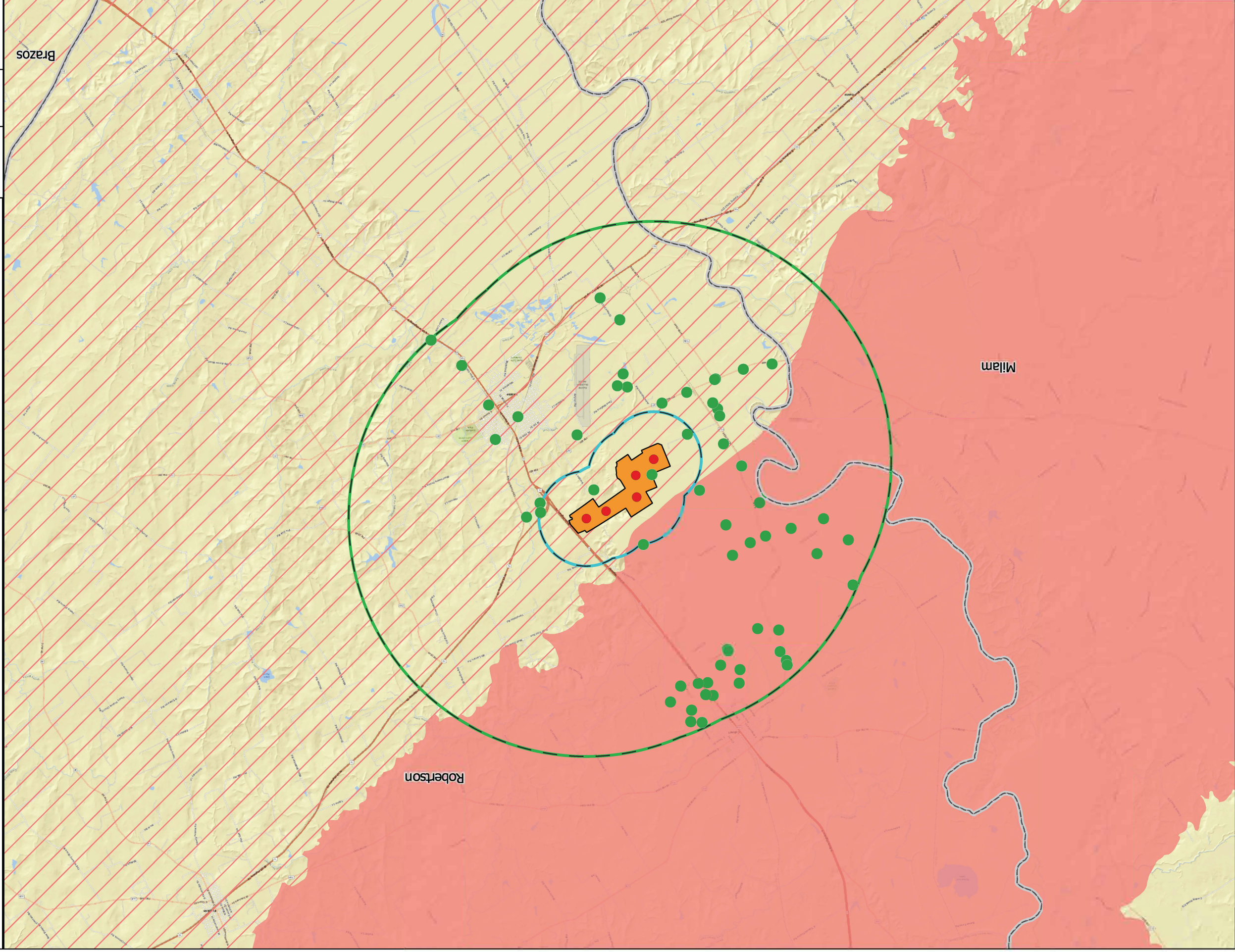
Explanation

- Proposed Wells
- 1 Mile Radius from Well Locations
- 5 Mile Radius from Well Locations
- Red Hill Farms Property
- ▭ Counties
- Major Aquifers**
- Carrizo - Wilcox (outcrop)
- ▨ Carrizo - Wilcox (subcrop)
- Simsboro
- BVGCD Reported Wells w/in 5 Miles



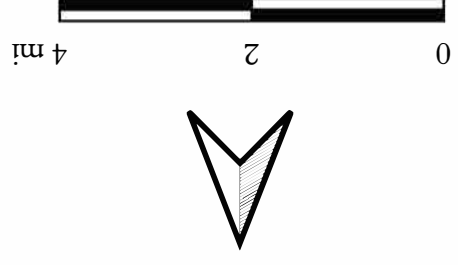
RHF, LLC

Figure 2:
Major Aquifers



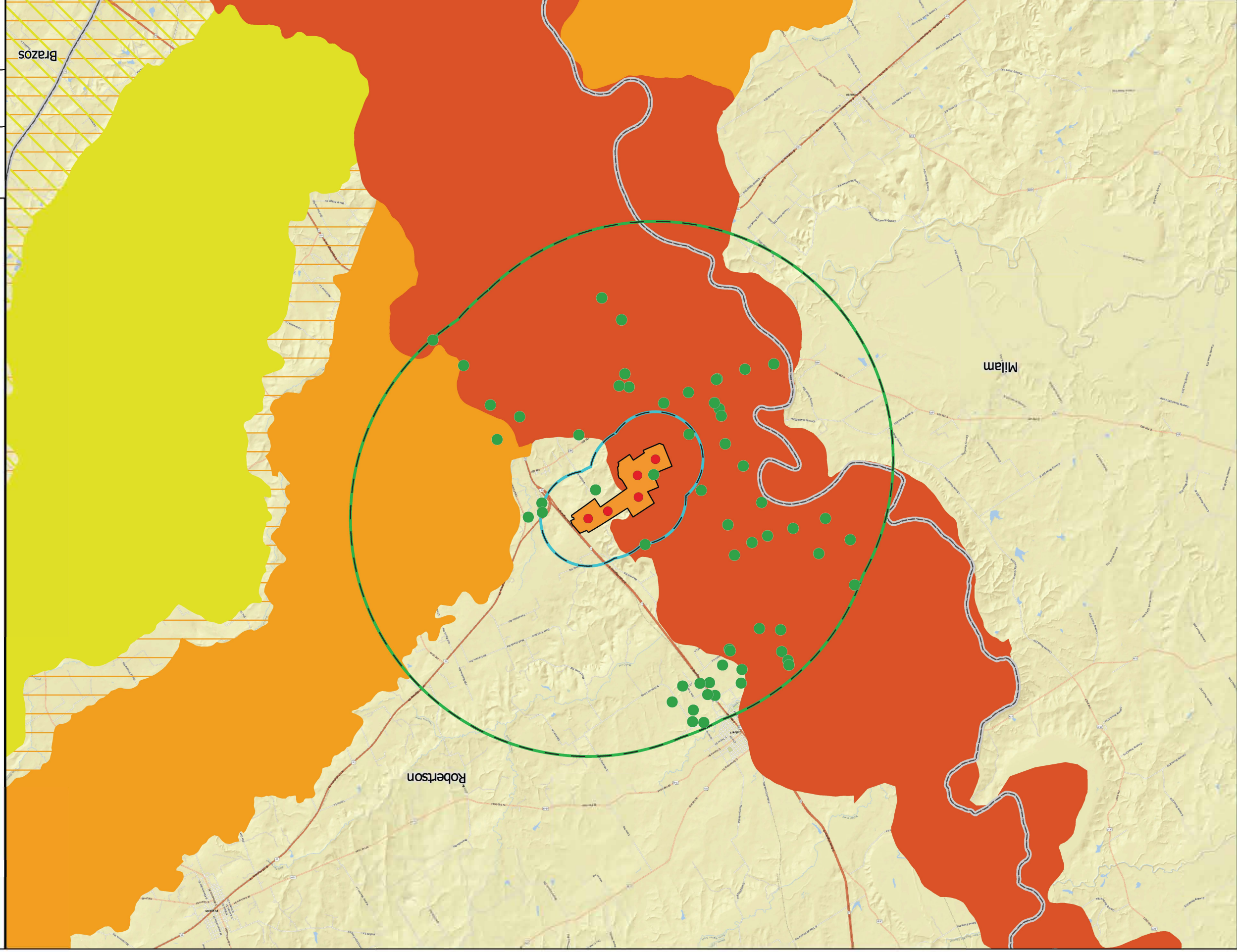
Explanation

- Proposed Wells
- 1 Mile Radius from Well Locations
- 5 Mile Radius from Well Locations
- Red Hill Farms Property
- ▭ Counties
- Minor Aquifers**
 - Brazos River Alluvium
 - Queen City (outcrop)
 - Queen City (subcrop)
 - Sparta (outcrop)
 - Sparta (subcrop)
- BVGCD Reported Wells w/in 5 Miles
- Simsboro



RHF, LLC

Figure 3:
Minor Aquifers



Explanation

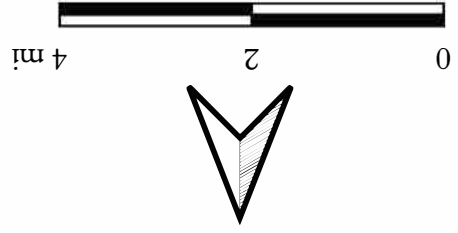
- Proposed Wells
- 1 Mile Radius from Well Locations
- 5 Mile Radius from Well Locations
- Red Hills Farms Property
- Counties

BVGD Reported Wells w/in 5 Miles

- Simsboro

Surface Geology

- Qal - Alluvium
- Qt - Fluvial/terrace deposits
- Qhg - High gravel deposits
- Ecm - Cook Mountain Formation
- Es - Sparta Sand
- Ew - Weches Formation
- Eqc - Queen City Sand
- Er - Reklaw Formation
- Ec - Carrizo Sand
- Ewi - Wilcox Group
- Ecb - Calvert Bluff Formation
- Esb - Simsboro Formation
- Eh - Hooper Formation



RHF, LLC

Figure 4:
Surface Geology

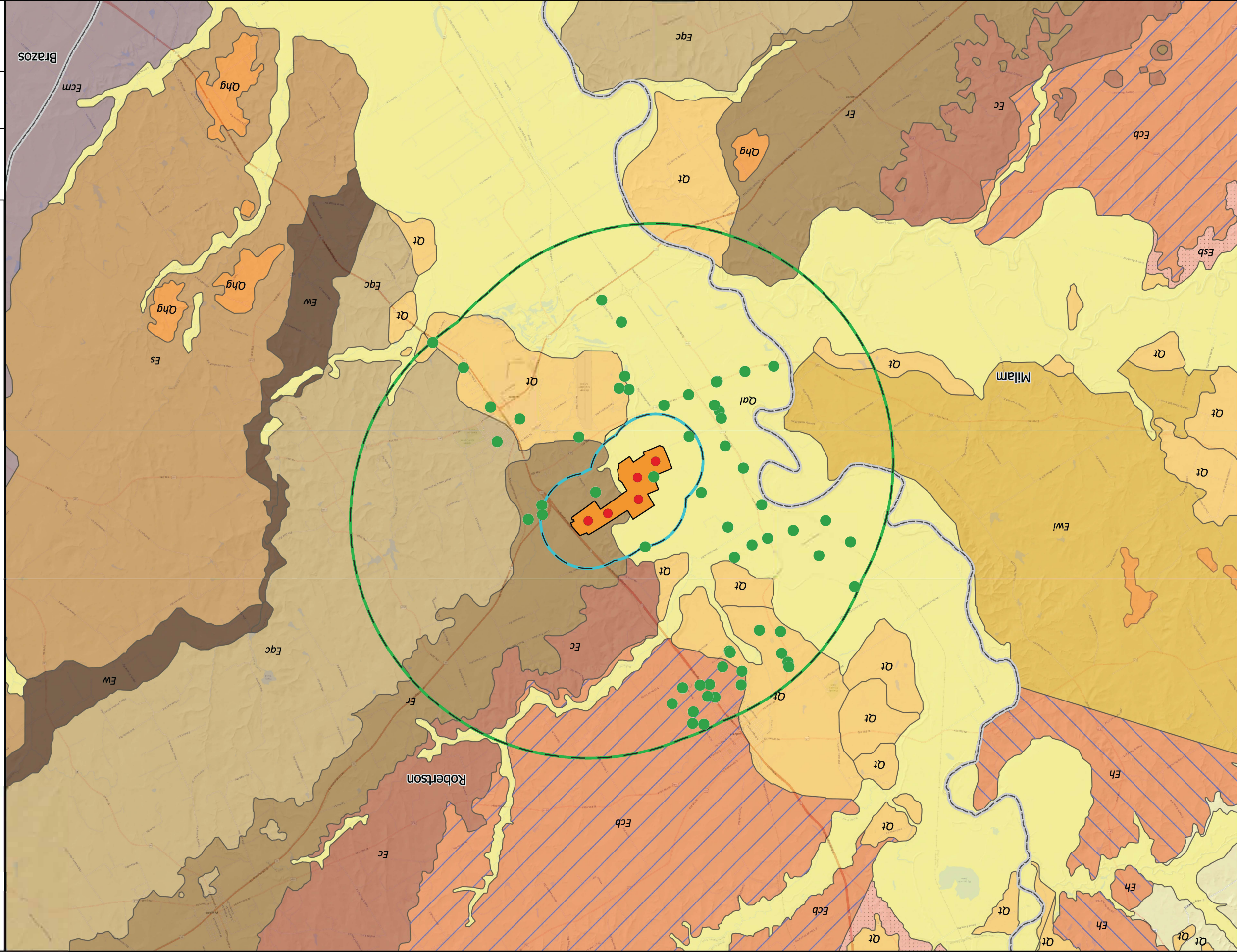
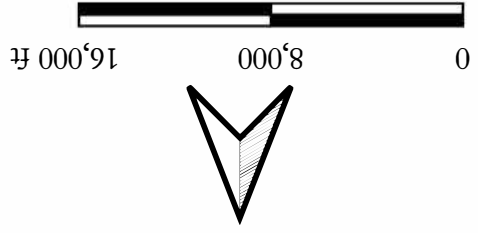


Figure 5: Well Locations w/in 5 Miles of Proposed Wells

RHF, LLC



- Explanation**
- Proposed Wells
 - 1 Mile Radius from Well Locations
 - 5 Mile Radius from Well Locations
 - Red Hills Farms Property
 - ▭ Counties
 - BVGCD Reported Wells w/in 5 Miles
 - Simsboro

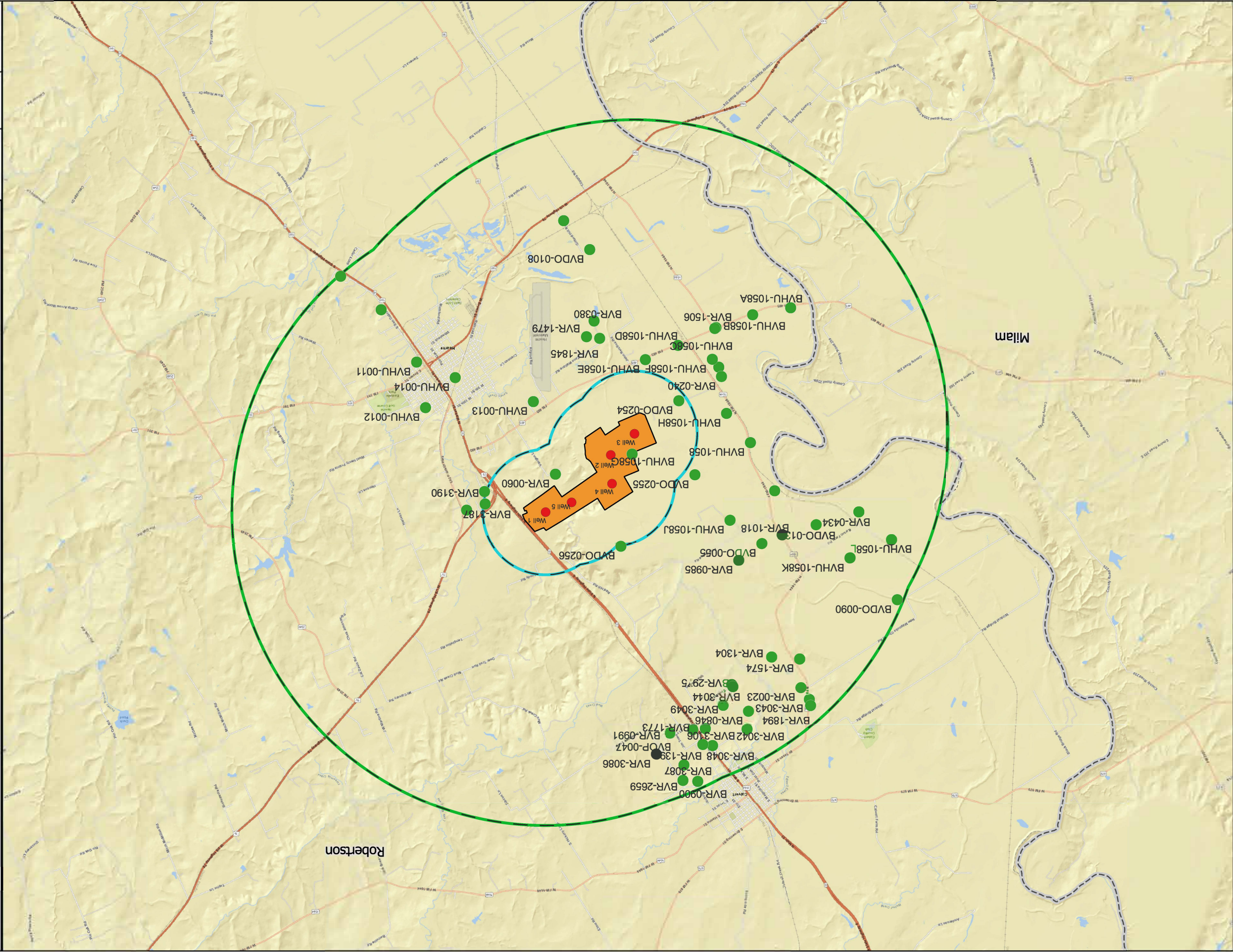
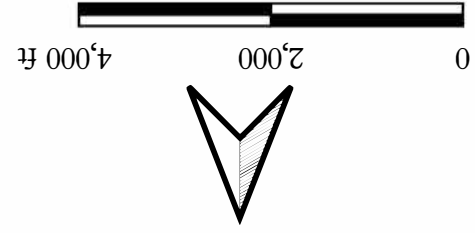


Figure 6: Well Locations w/in 1 Mile of Proposed Wells

RHF, LLC



- Explanation**
- Proposed Wells
 - 1 Mile Radius from Well Locations
 - 5 Mile Radius from Well Locations
 - Lutz Property
 - Counties
 - BVGCD Reported Wells w/in 1 Mile
 - Simsboro

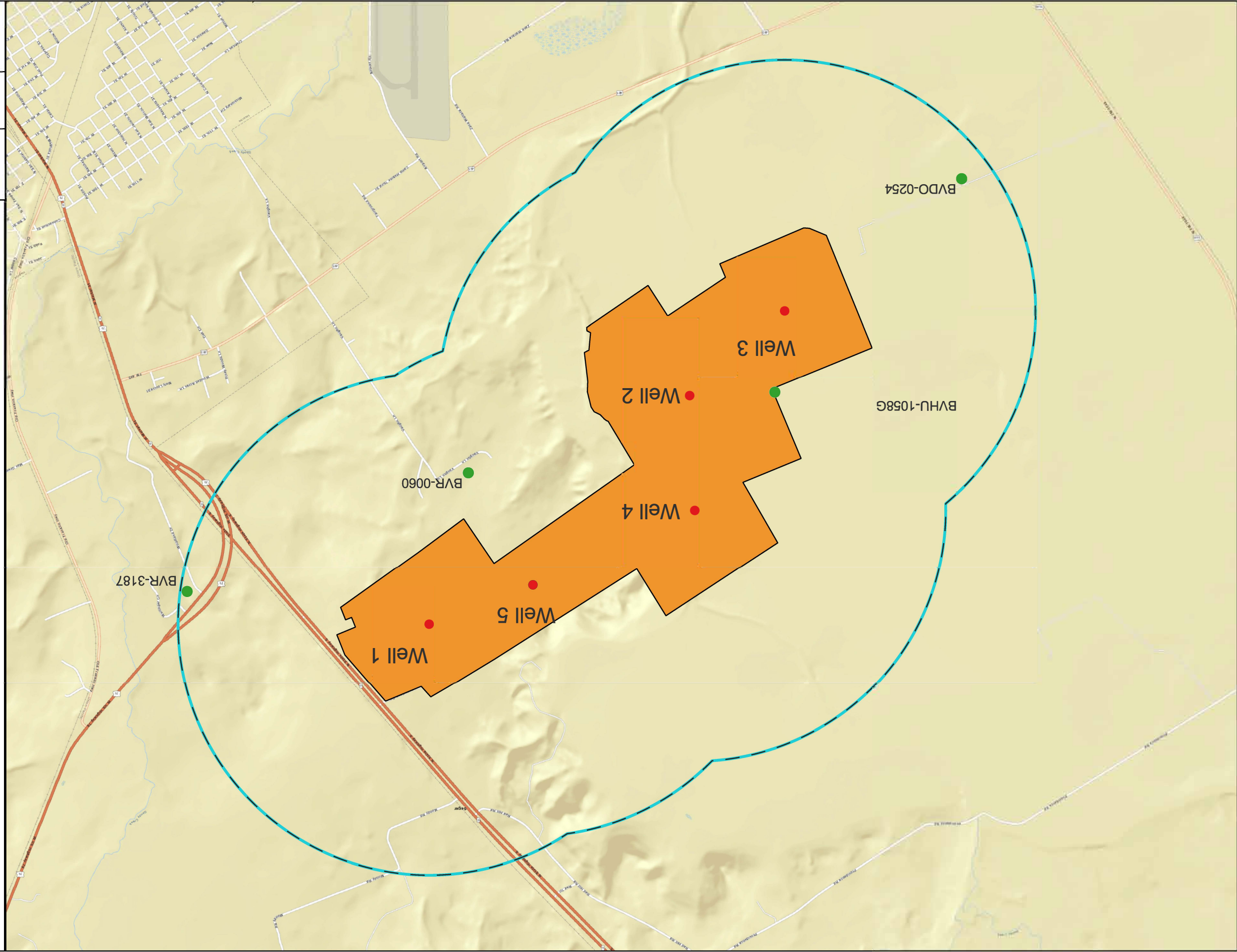
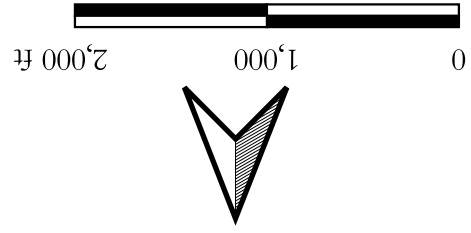
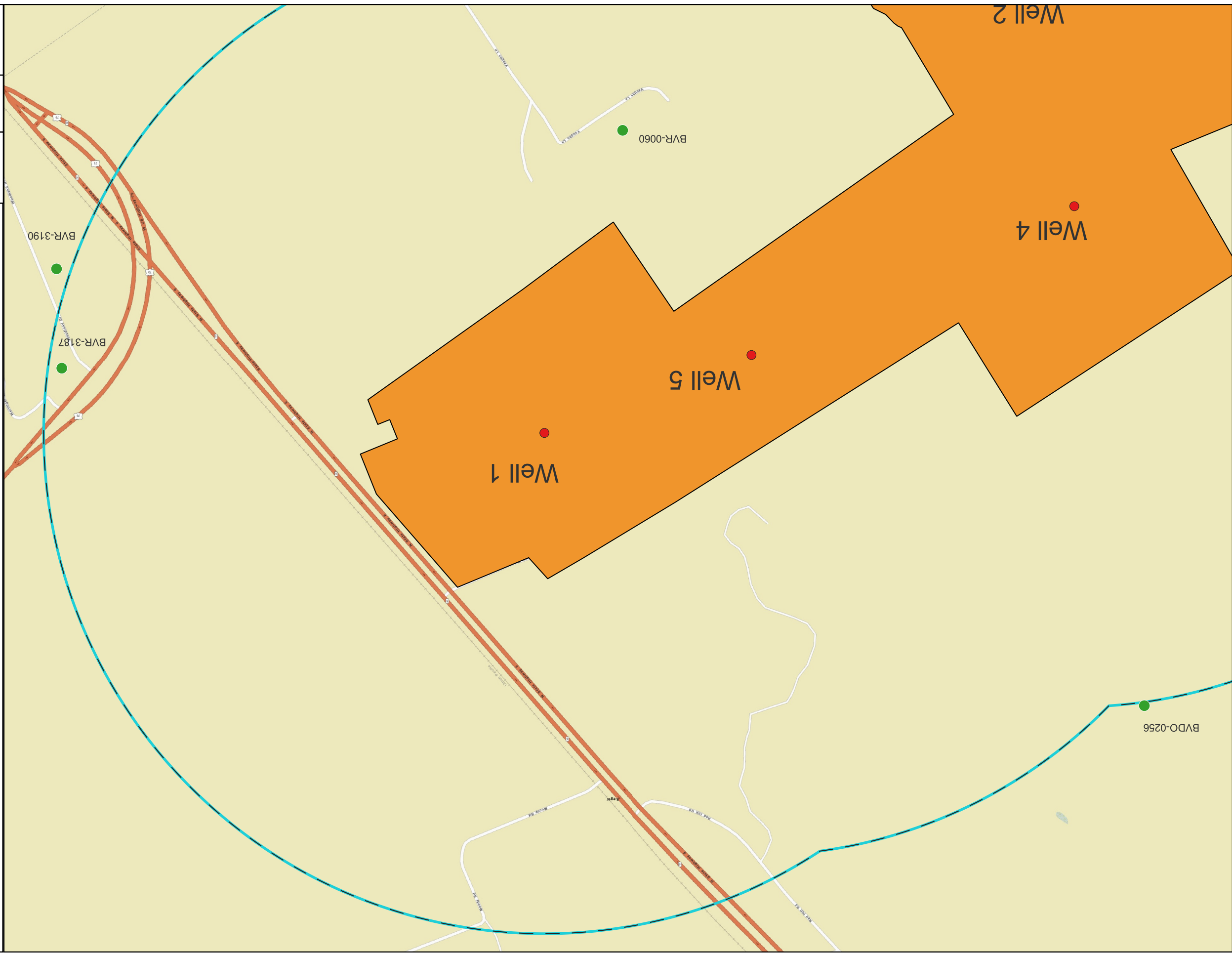


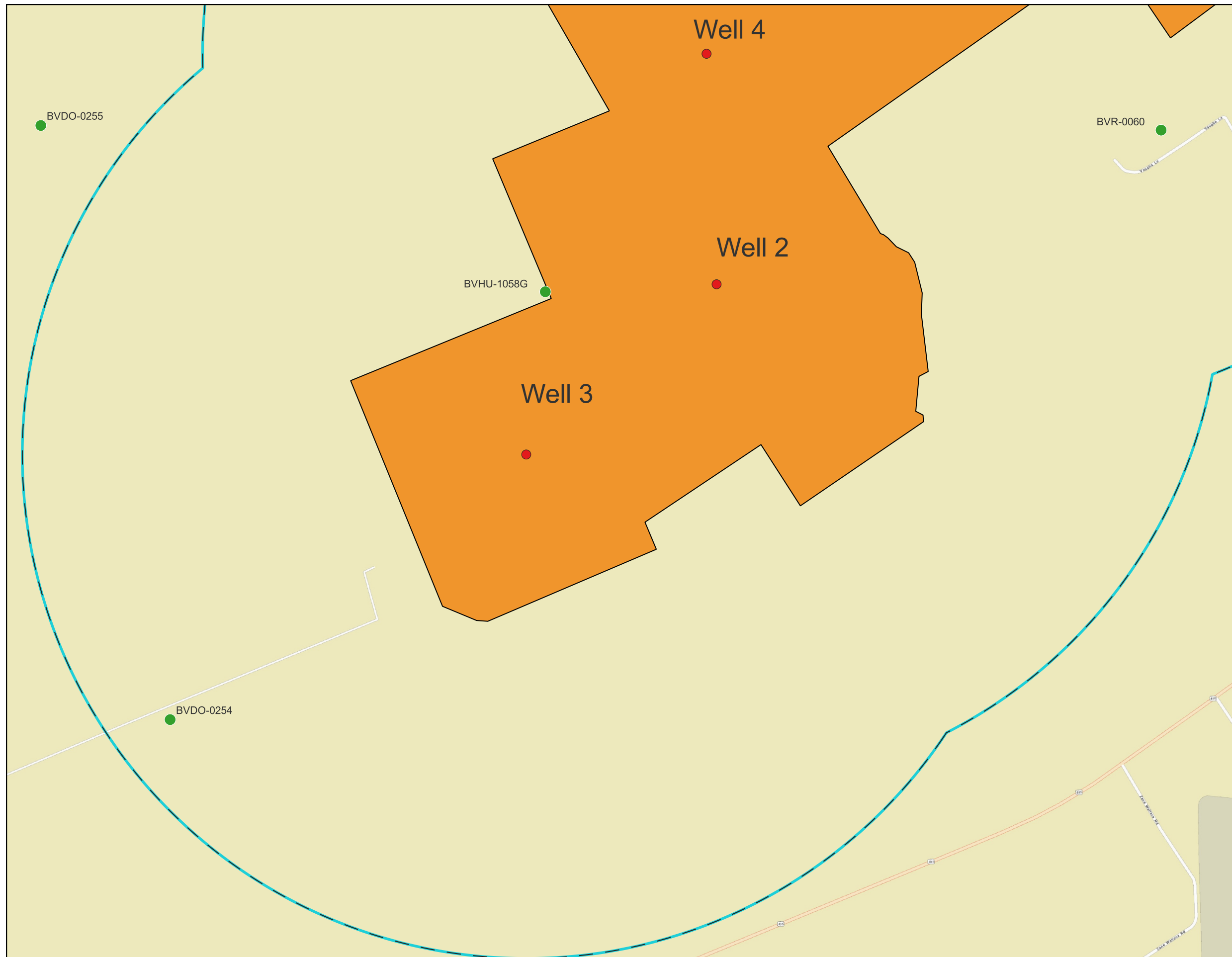
Figure 6a: Well Locations w/in 1 Mile of Proposed Wells

RHF, LLC



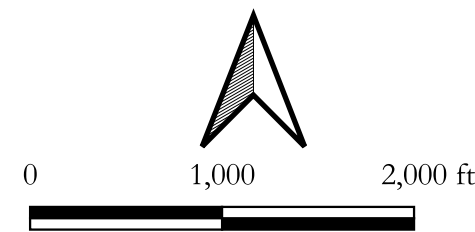
- Explanation**
- Proposed Wells
 - 1 Mile Radius from Well Locations
 - Red Hill Farms Property
 - Counties
 - BVGCD Reported Wells w/in 5 Miles
 - Simsboro





Explanation

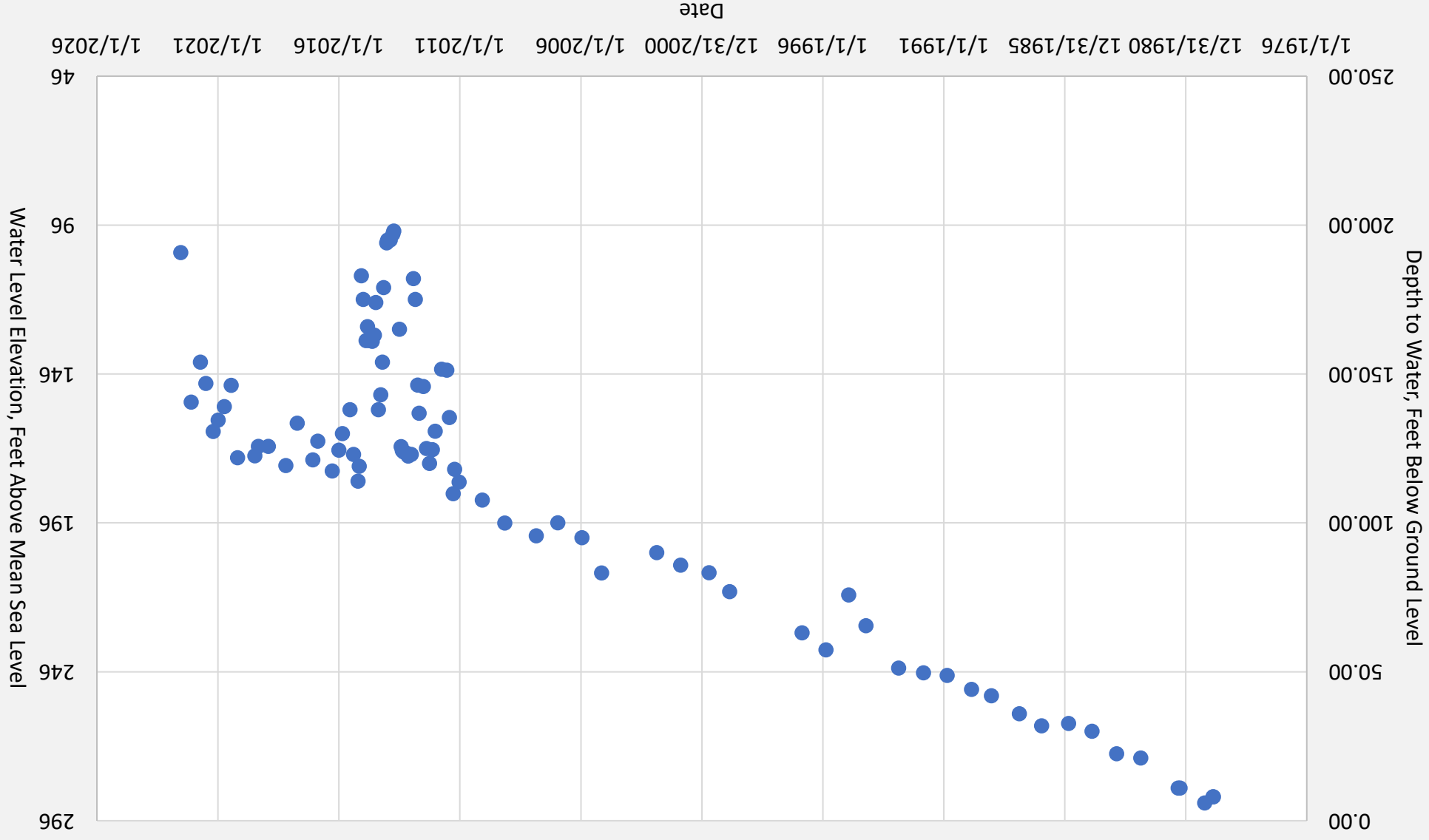
- Proposed Wells
 - 1 Mile Radius from Well Locations
 - Red Hill Farms Property
 - - - Counties
- BVGCD Reported Wells w/in 5 Miles**
- Simsboro



RHF, LLC

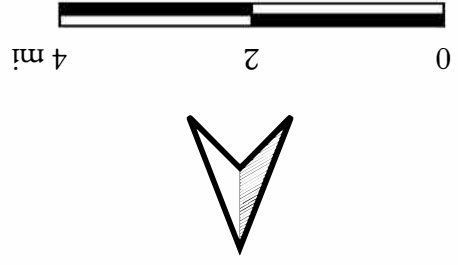
Figure 6b: Well Locations w/in 1 Mile of Proposed Wells

Figure 7 – City of Hearne Well No. 4
Texas Water Development Board Number 59-04-701



Explanation

- Proposed Wells
- 1 Mile Radius from Well Locations
- 5 Mile Radius from Well Locations
- 1-Year Modeled Drawdown - GAM
- Contour Interval = 10 feet
- Red Hill Farms Property
- ▭ Counties
- Simsboro
- BVGCD Reported Wells w/in 5 Miles



RHF, LLC

Figure 9: 1-Year GAM Drawdown Contours

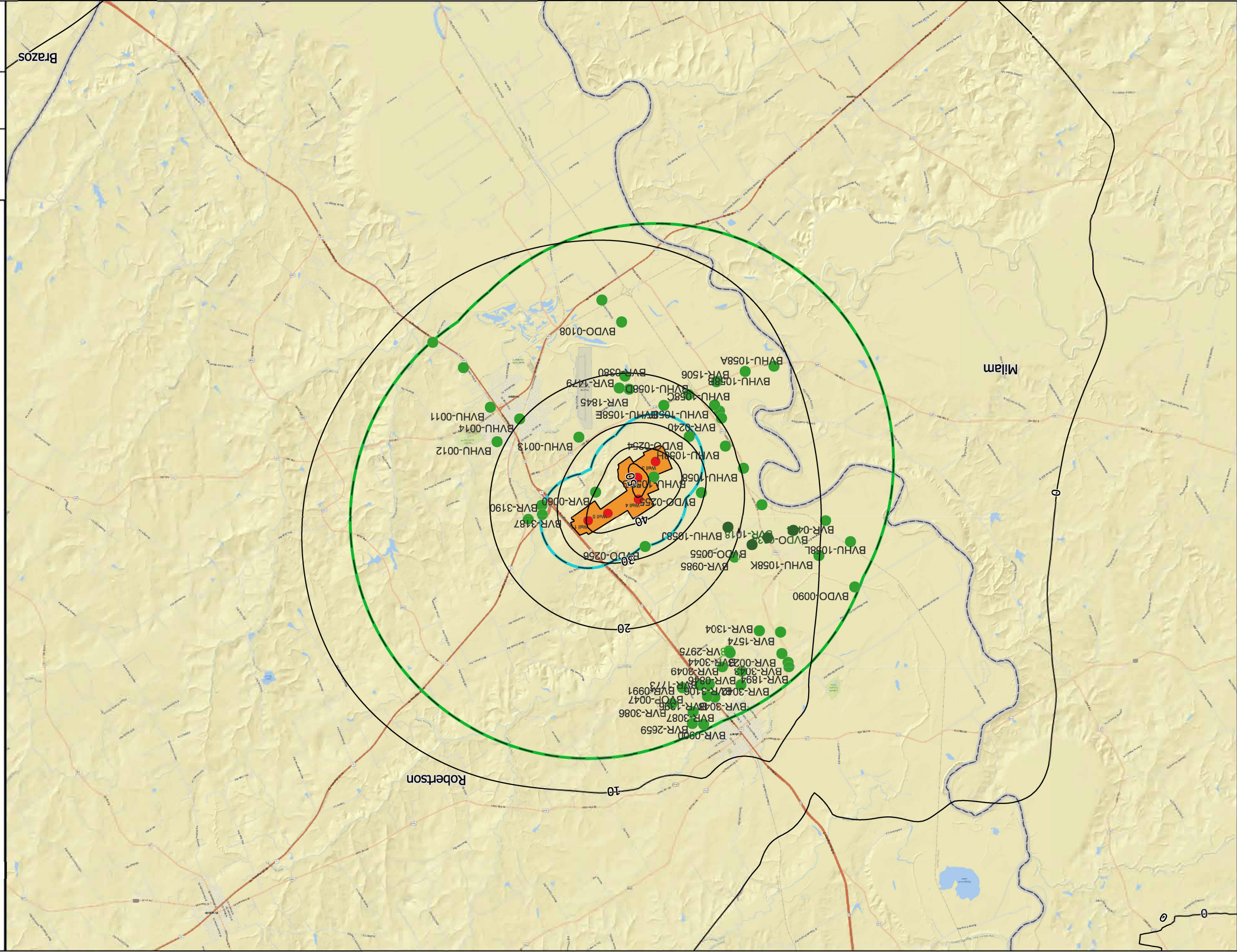


Figure 10: 10-Year GAM
Drawdown Contours

RHF, LLC

0 2 4 mi



- Explanation**
- Proposed Wells
 - 1 Mile Radius from Well Locations
 - 5 Mile Radius from Well Locations
 - 10-Year Modeled Drawdown - GAM
 - Contour Interval = 10 feet
 - Red Hill Farms Property
 - Counties
 - BVGCD Reported Wells w/in 5 Miles
 - Simsboro

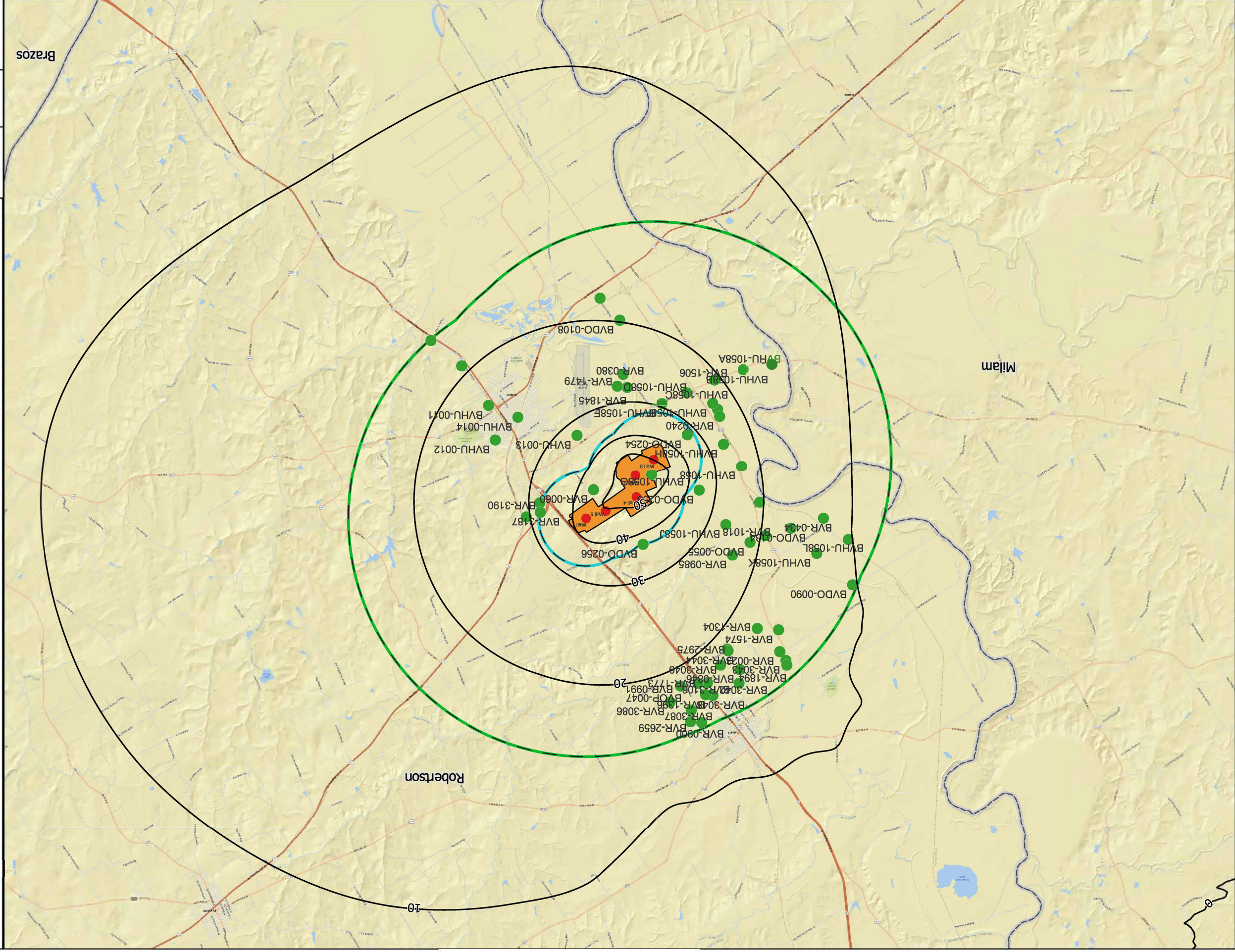
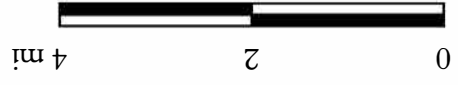


Figure 11: 1-Year Analytical Drawdown Contours

RHF, LLC



- Explanation**
- Proposed Wells
 - 1 Mile Radius from Well Locations
 - 5 Mile Radius from Well Locations
 - 1-yr Modeled Drawdown - Analytical
 - Contour Interval = 10 feet
 - Red Hills Farms Property
 - Counties
 - Simsboro
 - BVGCD Reported Wells w/in 5 Miles

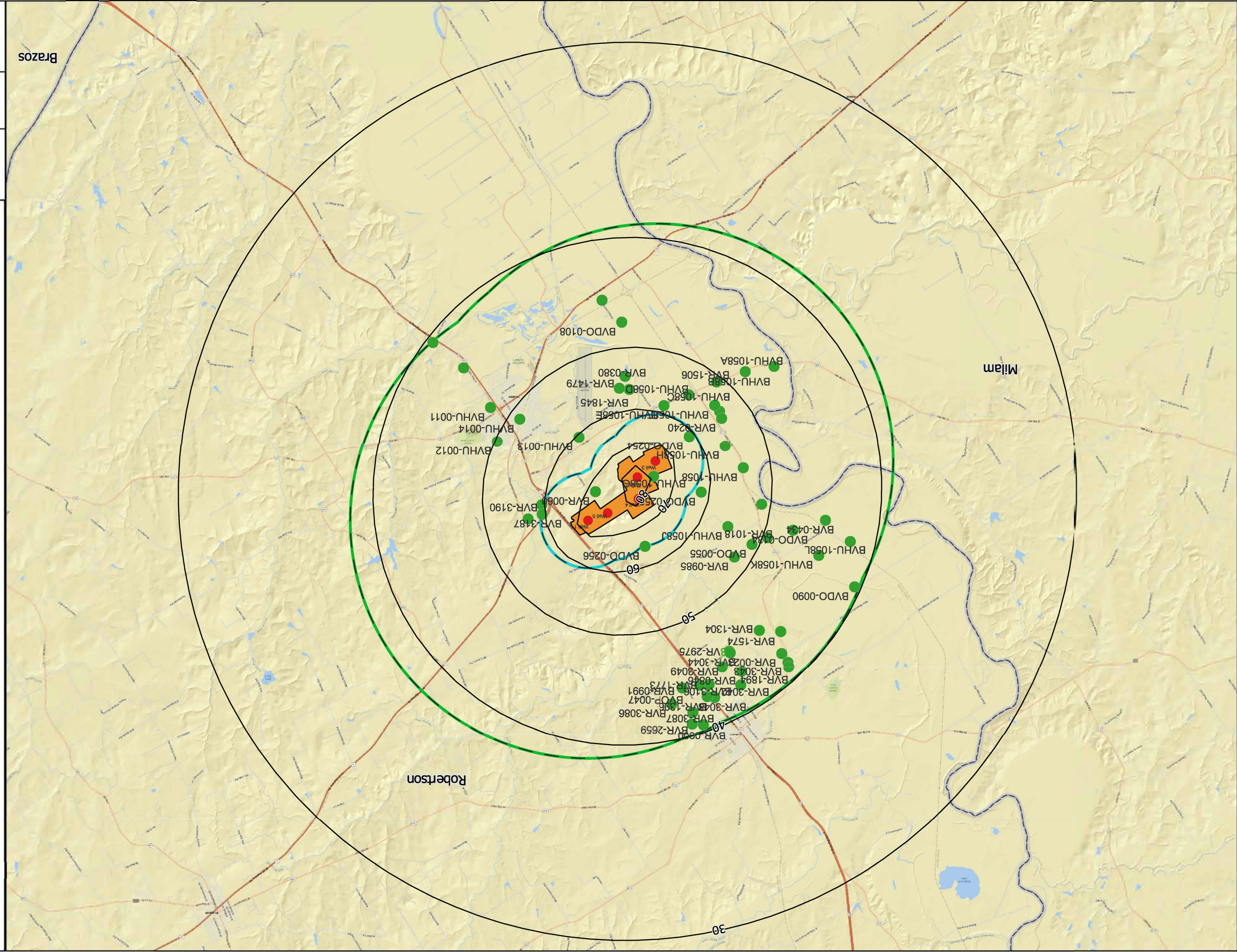
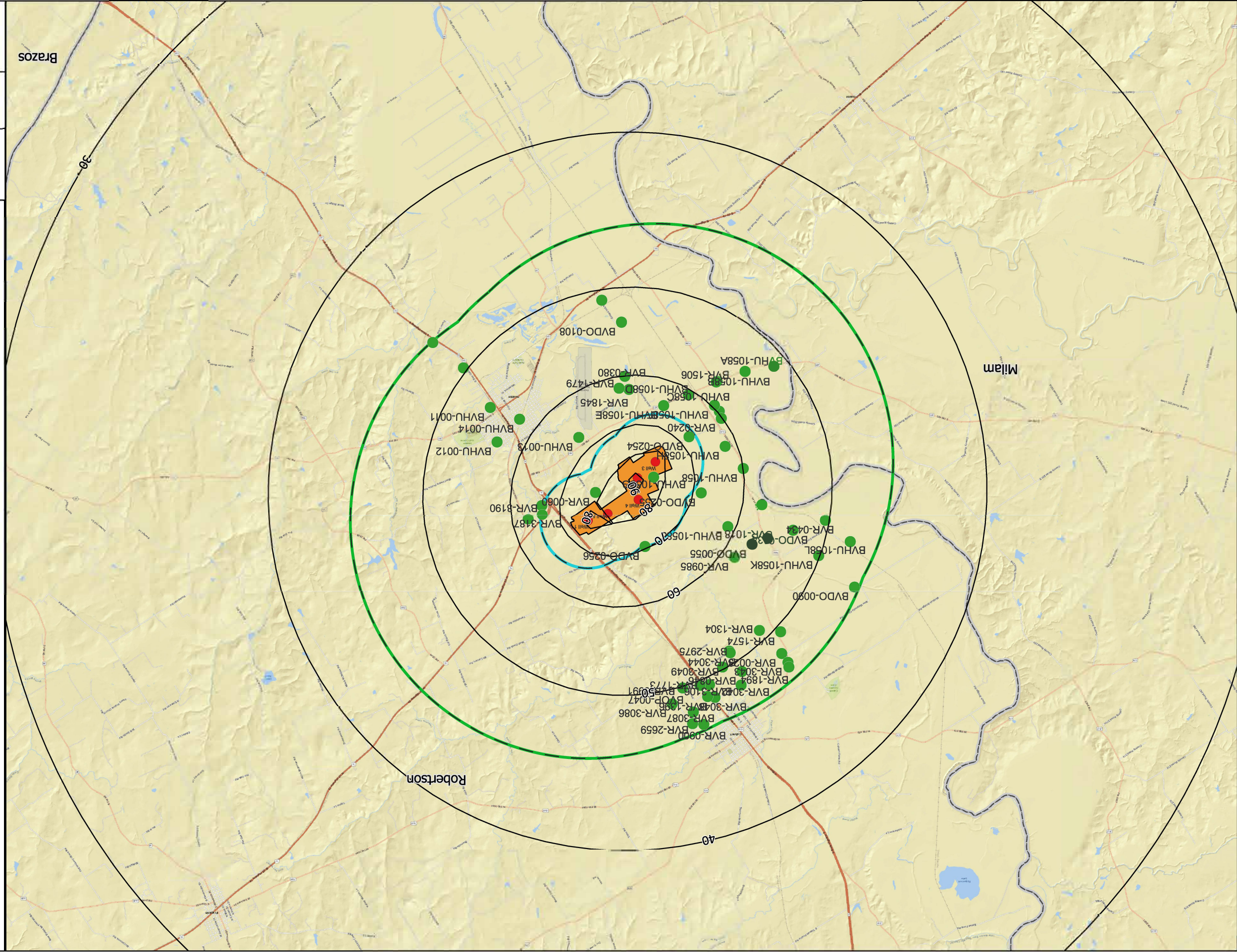


Figure 12: 10-Year Analytical Drawdown Contours

RHF, LLC

0 2 4 mi



- Explanation**
- Proposed Wells
 - 1 Mile Radius from Well Locations
 - 5 Mile Radius from Well Locations
 - 10-yr Modeled Drawdown - Analytical
 - Contour Interval = 10 feet
 - Red Hills Farms Property
 - Counties
 - Simsboro
 - BVGCD Reported Wells w/in 5 Miles