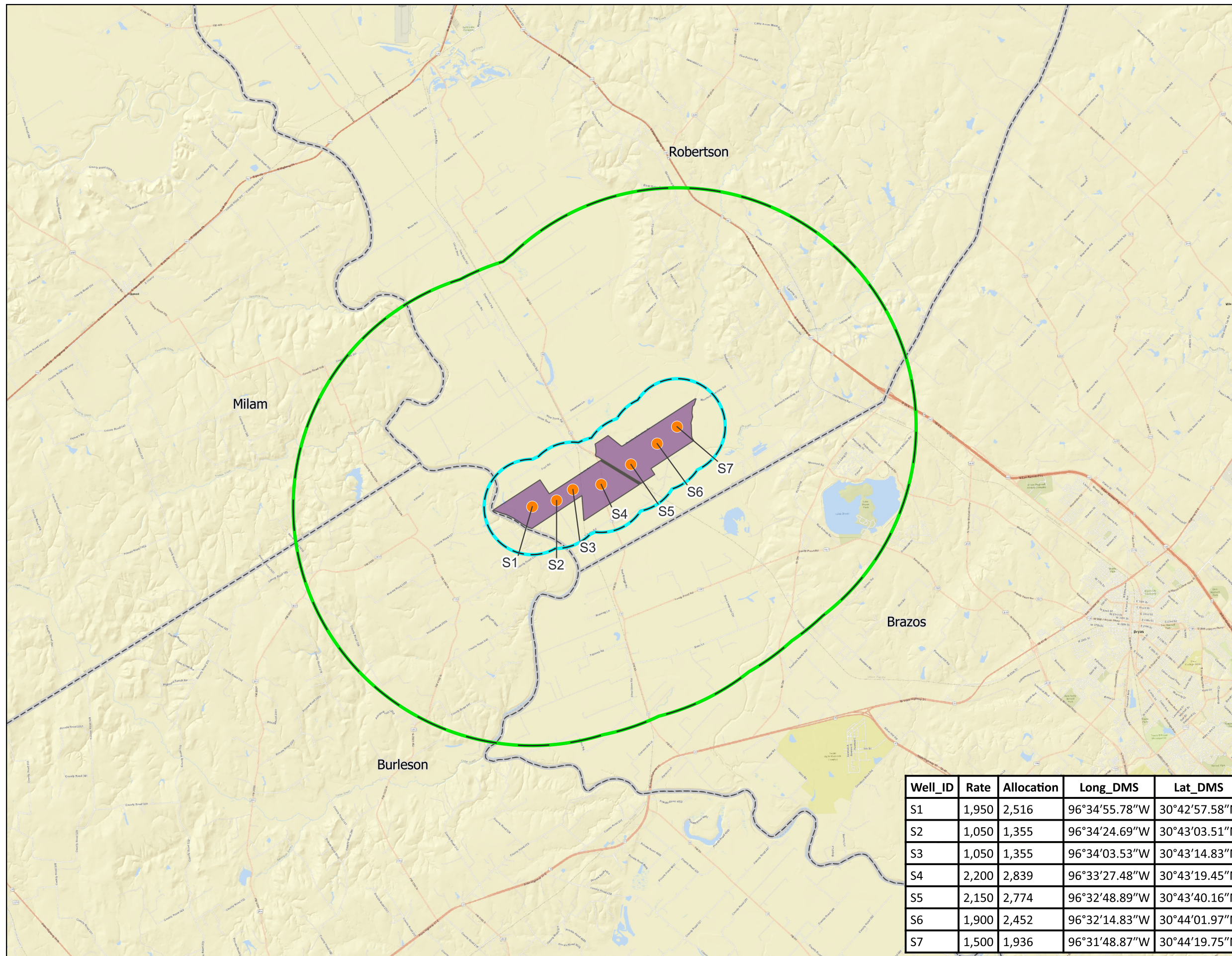


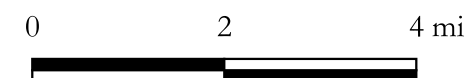


ATTACHMENT 1  
– FIGURES



**Explanation**

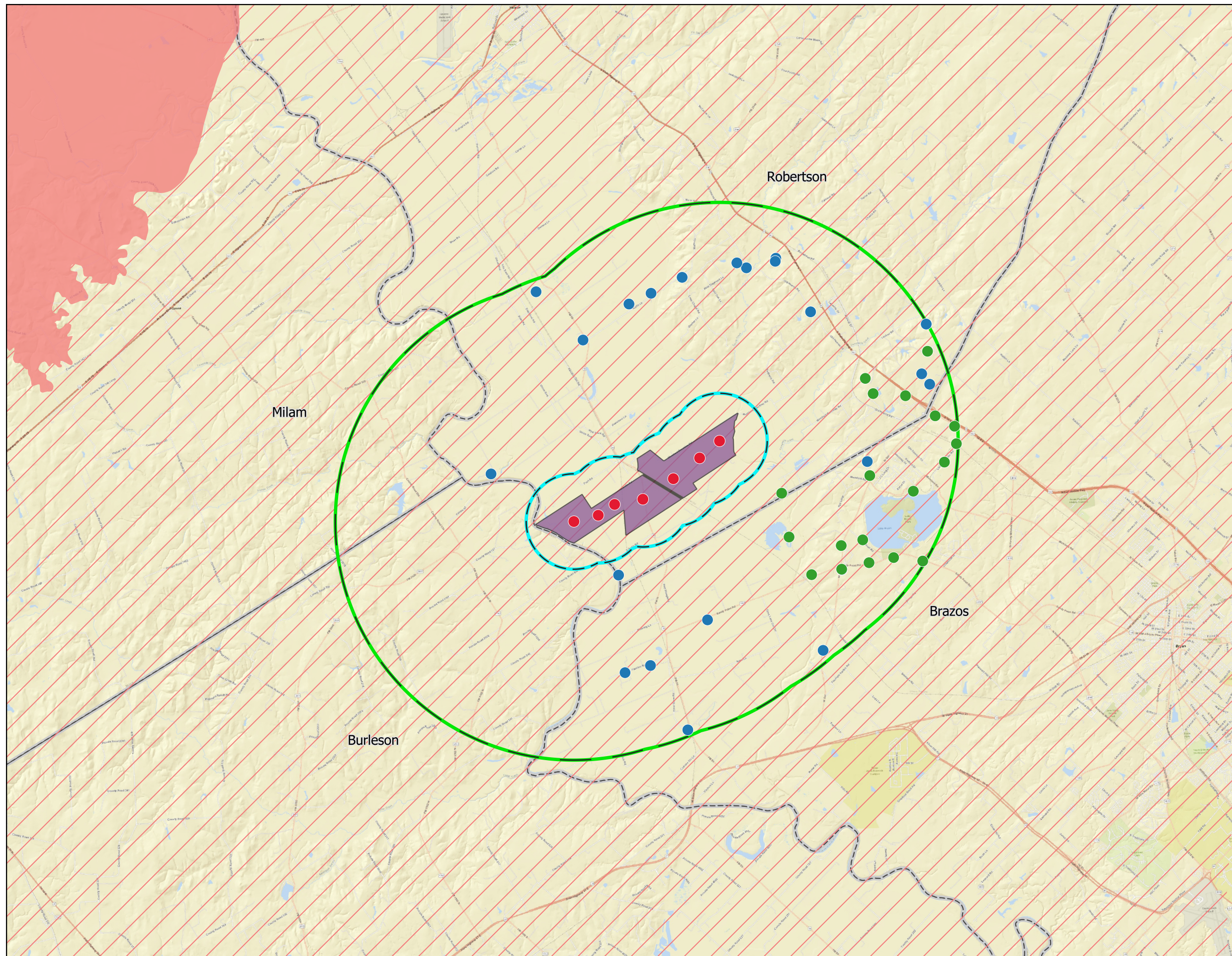
- Proposed Simsboro Wells
- 5 Mile Radius from Well Locations
- 1 Mile Radius from Well Locations
- Hollybrook Property
- Counties



Well_ID	Rate	Allocation	Long_DMS	Lat_DMS
S1	1,950	2,516	96°34'55.78"W	30°42'57.58"N
S2	1,050	1,355	96°34'24.69"W	30°43'03.51"N
S3	1,050	1,355	96°34'03.53"W	30°43'14.83"N
S4	2,200	2,839	96°33'27.48"W	30°43'19.45"N
S5	2,150	2,774	96°32'48.89"W	30°43'40.16"N
S6	1,900	2,452	96°32'14.83"W	30°44'01.97"N
S7	1,500	1,936	96°31'48.87"W	30°44'19.75"N

**DTB Investments, LP**

Figure 2:  
Simsboro Location Map

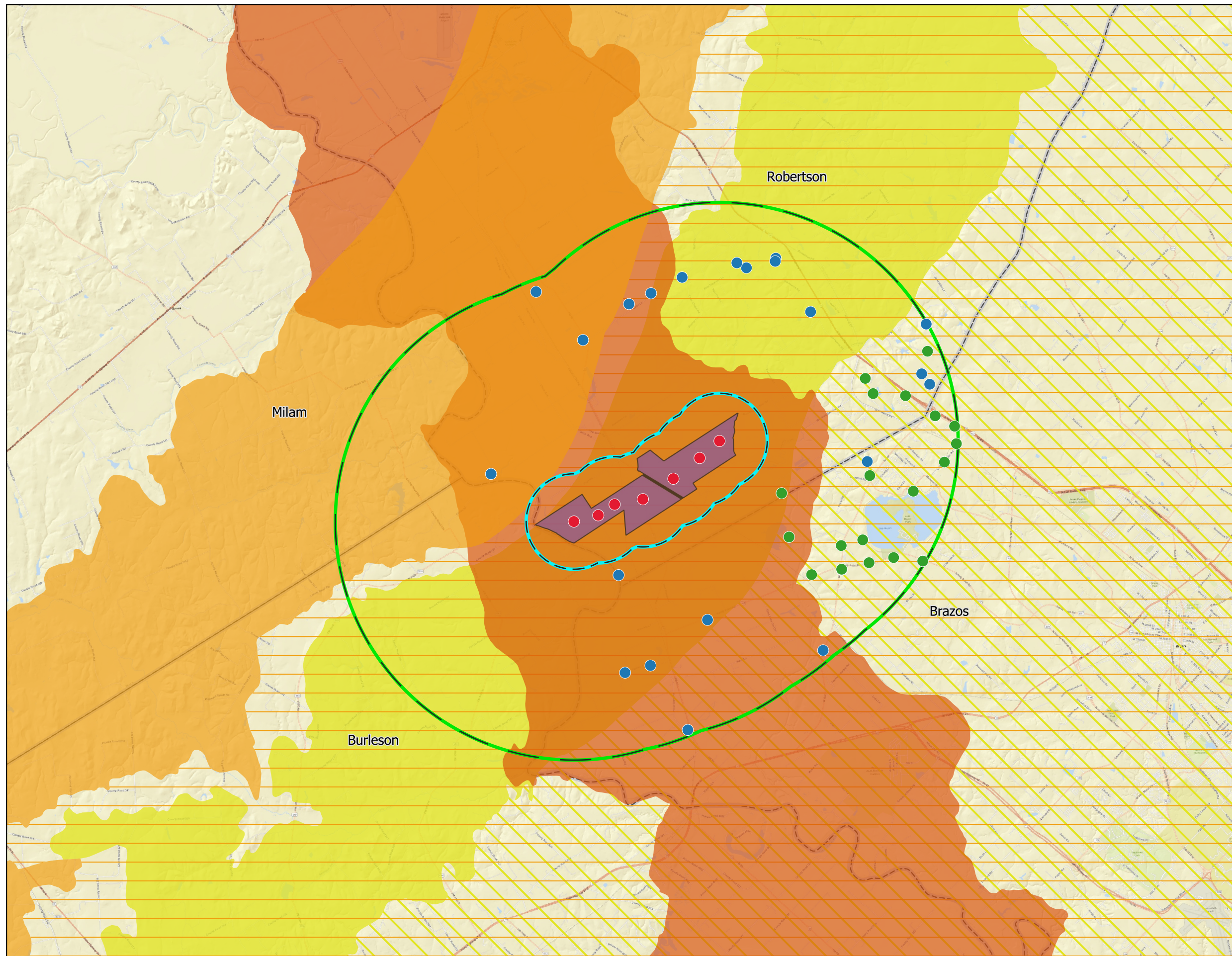


**Explanation**

- Proposed Well Location
- 5 Mile Radius from Well Locations
- 1 Mile Radius from Well Locations
- Hollybrook Property
- ▭ Counties
- Major Aquifers**
- Carrizo - Wilcox (outcrop)
- ▨ Carrizo - Wilcox (subcrop)
- BVGCD Reported Wells w/in 5 Miles**
- Carrizo
- Simsboro

**DTB Investments, LP**

Figure 3:  
Major Aquifers



**Explanation**

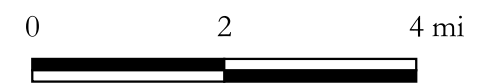
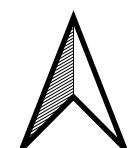
- Proposed Well Location
- 5 Mile Radius from Well Locations
- 1 Mile Radius from Well Locations
- Hollybrook Property
- ▭ Counties

**Minor Aquifers**

- Brazos River Alluvium
- Queen City (outcrop)
- Queen City (subcrop)
- Sparta (outcrop)
- Sparta (subcrop)

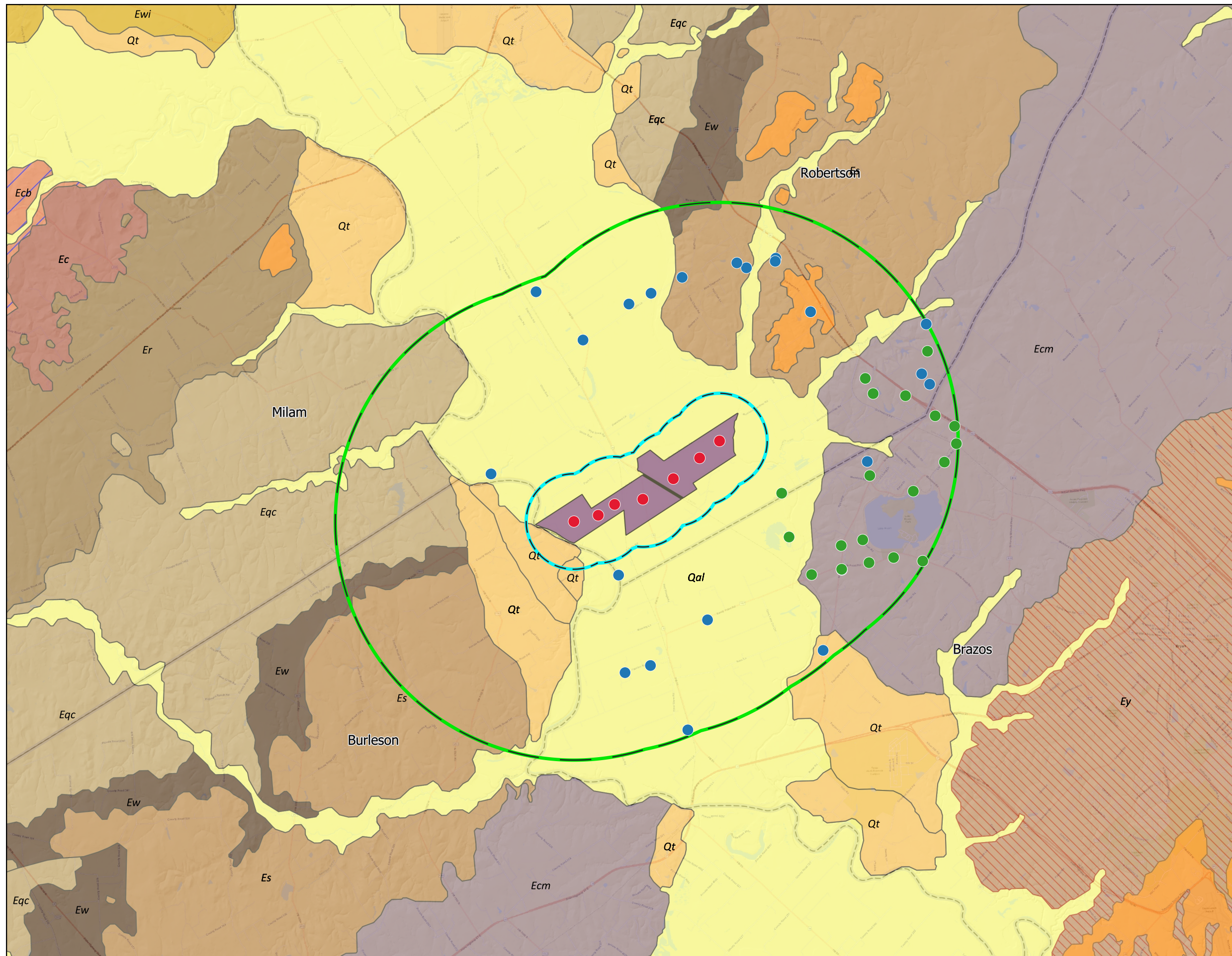
**BVGCD Reported Wells w/in 5 Miles**

- Carrizo
- Simsboro



**DTB Investments, LP**

Figure 4:  
Minor Aquifers



**Explanation**

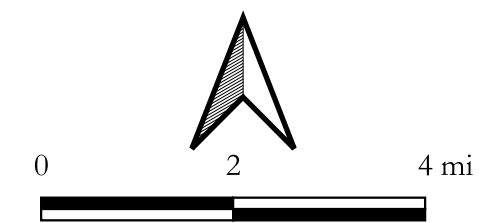
- Proposed Well Location
- 5 Mile Radius from Well Locations
- 1 Mile Radius from Well Locations
- Hollybrook Property
- Counties

**BVGC Reported Wells w/in 5 Miles**

- Carrizo
- Simsboro

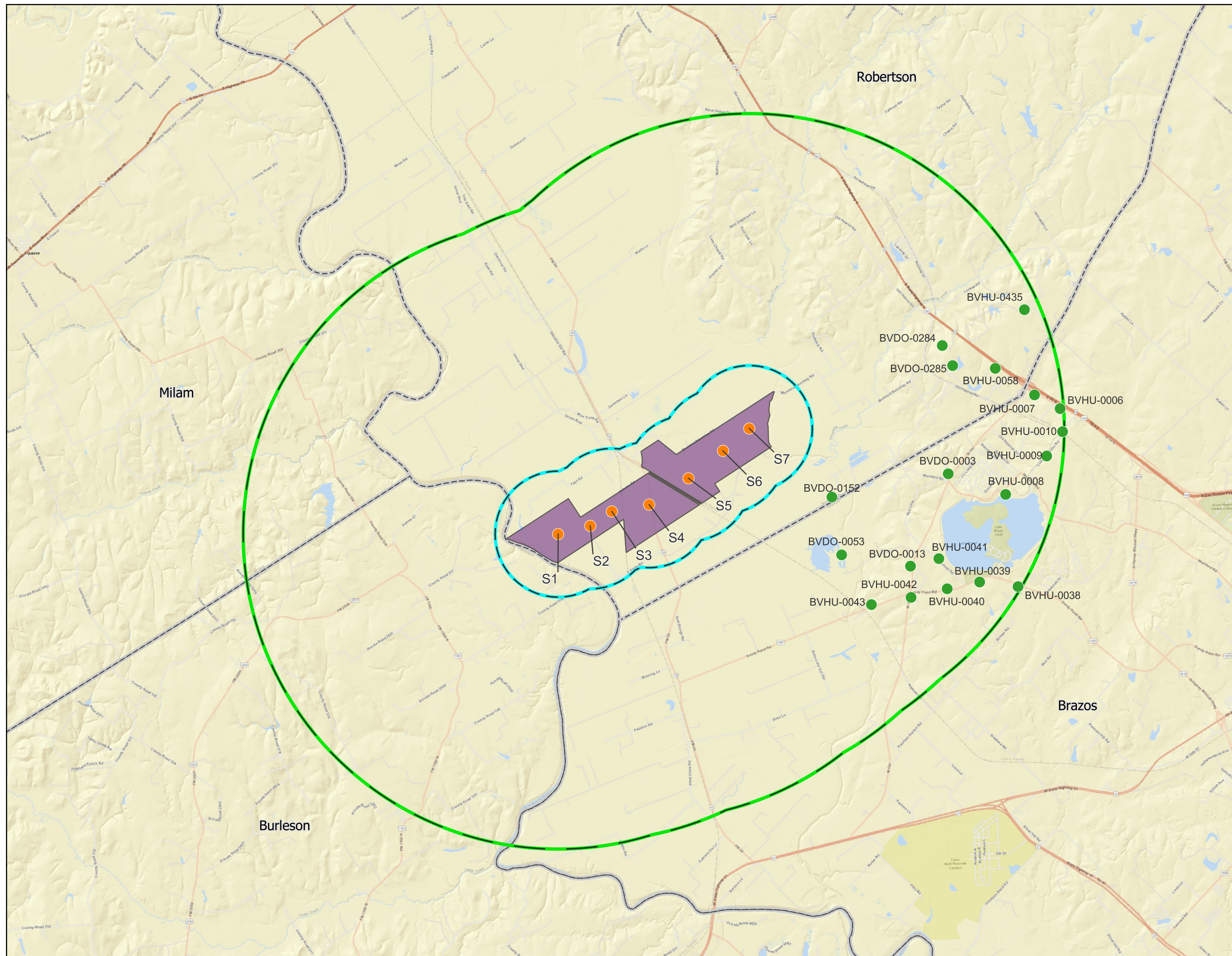
**Surface Geology**

- Qal - Alluvium
- Qt - Fluvial terrace deposits
- Qhg - High gravel deposits
- Ey - Yegua Formation
- Ecm - Cook Mountain Formation
- Es - Sparta Sand
- Ew - Weches Formation
- Eqc - Queen City Sand
- Er - Reklaw Formation
- Ec - Carrizo Sand
- Ewi - Wilcox Group
- Ecb - Calvert Bluff Formation



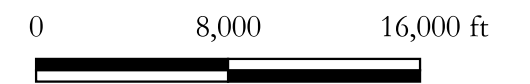
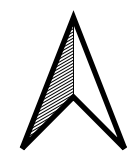
**DTB Investments, LP**

Figure 5:  
Surface Geology



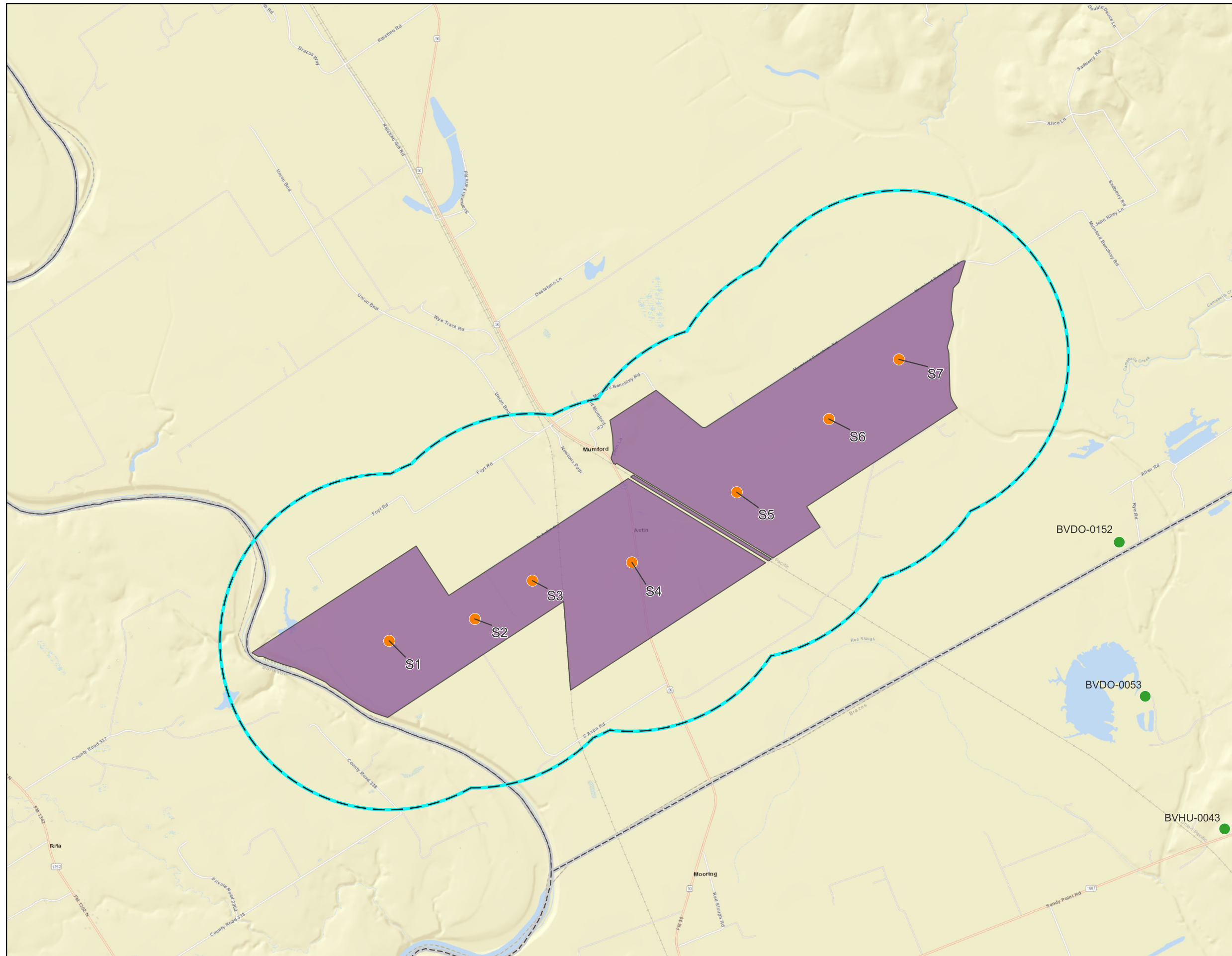
**Explanation**

- Proposed Simsboro Wells
- 5 Mile Radius from Well Locations
- 1 Mile Radius from Well Locations
- Hollybrook Property
- Counties
- BVGCD Reported Wells w/in 5 Miles**
- Simsboro



**DTB Investments, LP**

Figure 8: Simsboro Well Locations w/in 5 Miles of Proposed Wells

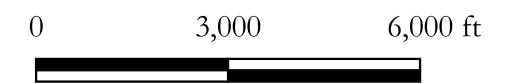
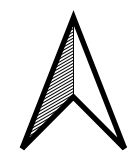


**Explanation**

- Proposed Simsboro Wells
- 1 Mile Radius from Well Locations
- 5 Mile Radius from Well Locations
- Hollybrook Property
- Counties

**BVGCD Reported Wells w/in 5 Miles**

- Simsboro



**DTB Investments, LP**

Figure 9: Simsboro Well Locations w/in 1 Mile of Proposed Wells

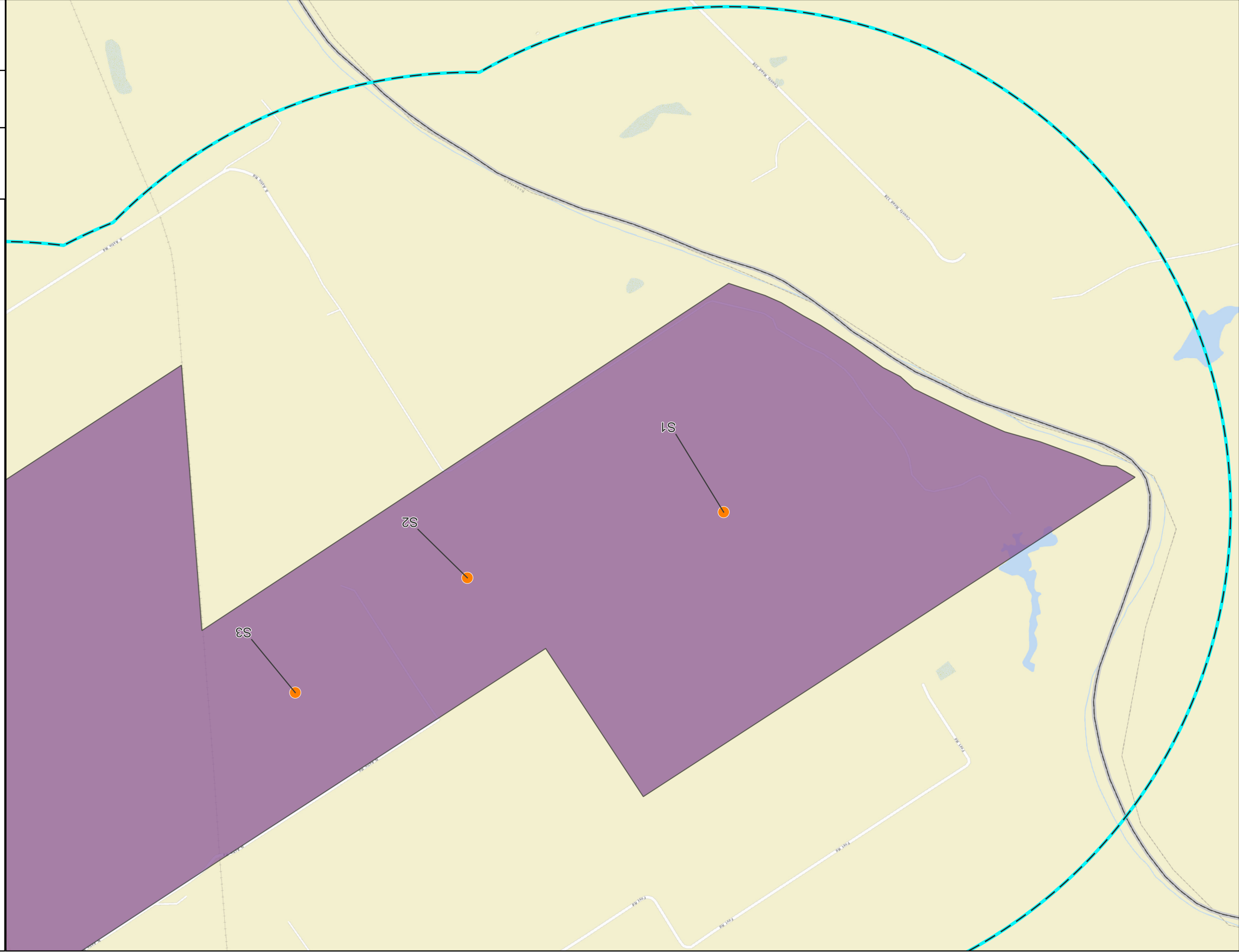
# DTB Investments, LP

Figure 9a: Simsboro Well Locations  
w/in 1 Mile of Proposed Wells

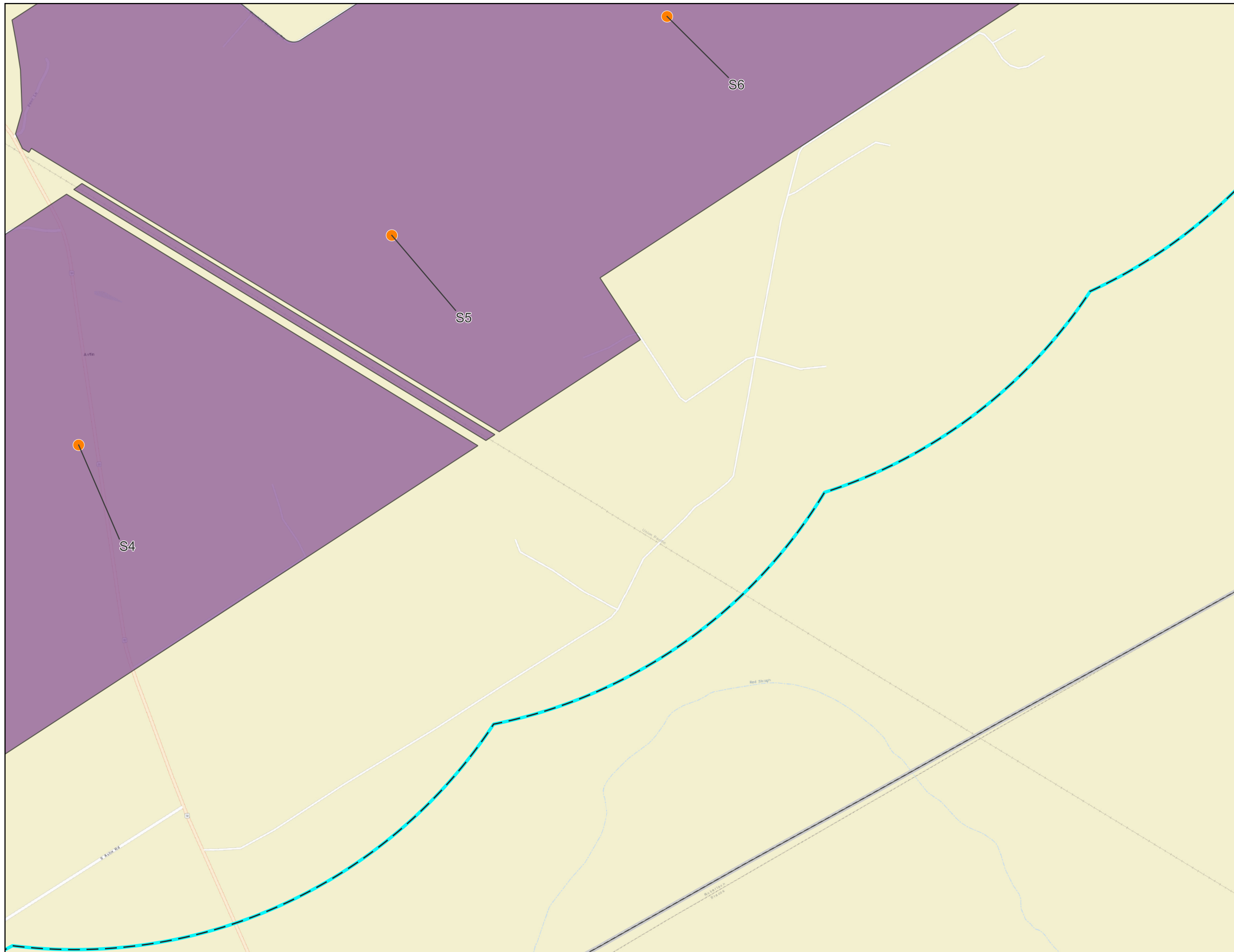
0 1,000 2,000 Ft



- Explanation**
- Proposed Simsboro Wells (Orange dot)
  - 1 Mile Radius from Well Locations (Cyan dashed circle)
  - 5 Mile Radius from Well Locations (Green solid circle)
  - Hollybrook Property (Purple shaded area)
  - Counties (Dashed line)

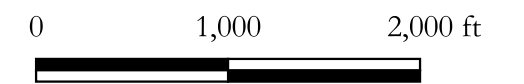
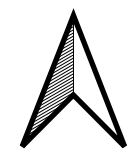






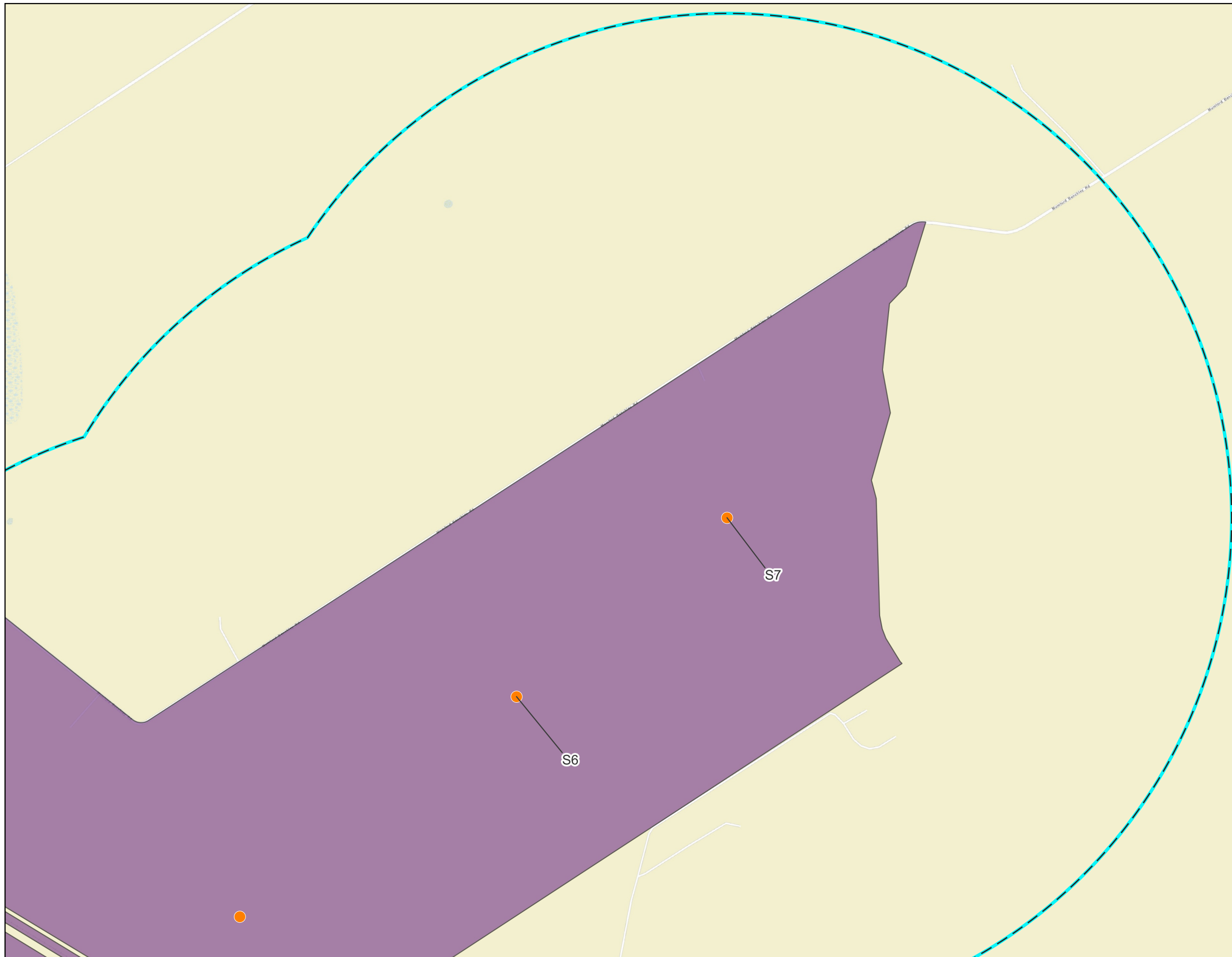
**Explanation**

- Proposed Simsboro Wells
- ⊙ 1 Mile Radius from Well Locations
- ⊙ 5 Mile Radius from Well Locations
- Hollybrook Property
- Counties



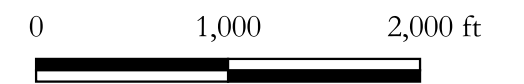
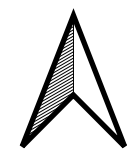
**DTB Investments, LP**

Figure 9b: Simsboro Well Locations w/in 1 Mile of Proposed Wells



**Explanation**

- Proposed Simsboro Wells
- 1 Mile Radius from Well Locations
- Hollybrook Property
- Counties

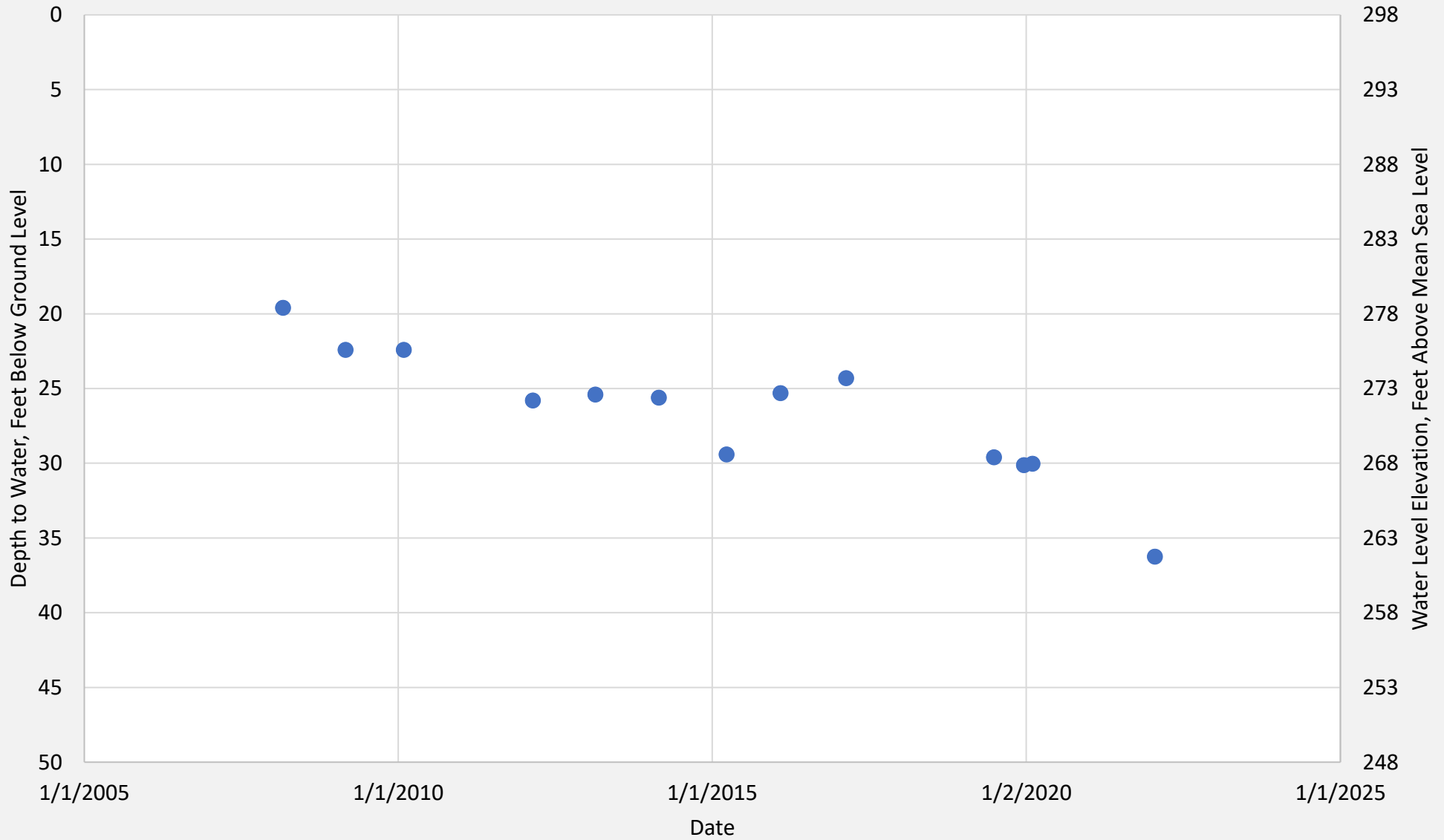


**DTB Investments, LP**

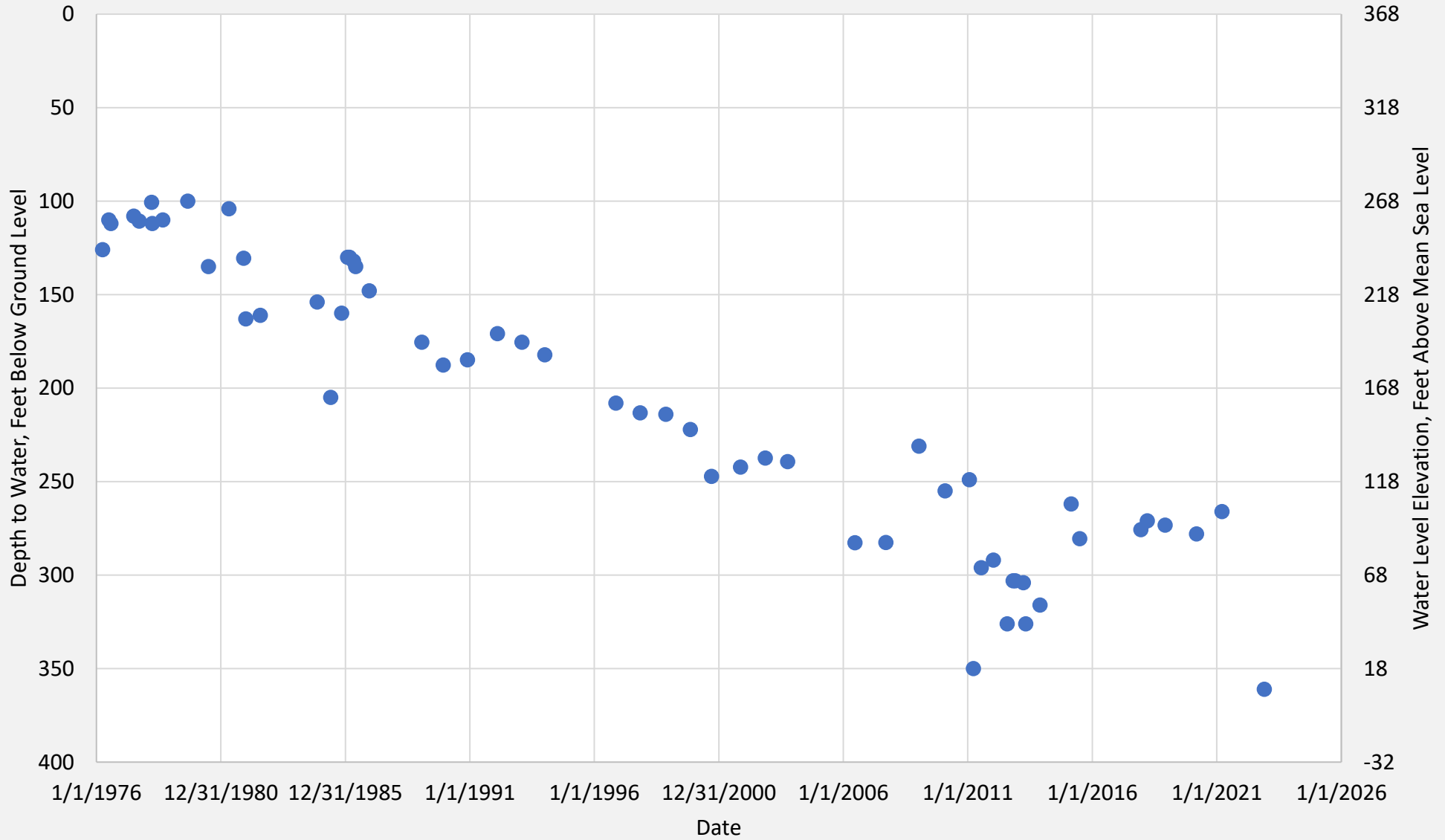
Figure 9c: Simsboro Well Locations w/in 1 Mile of Proposed Wells

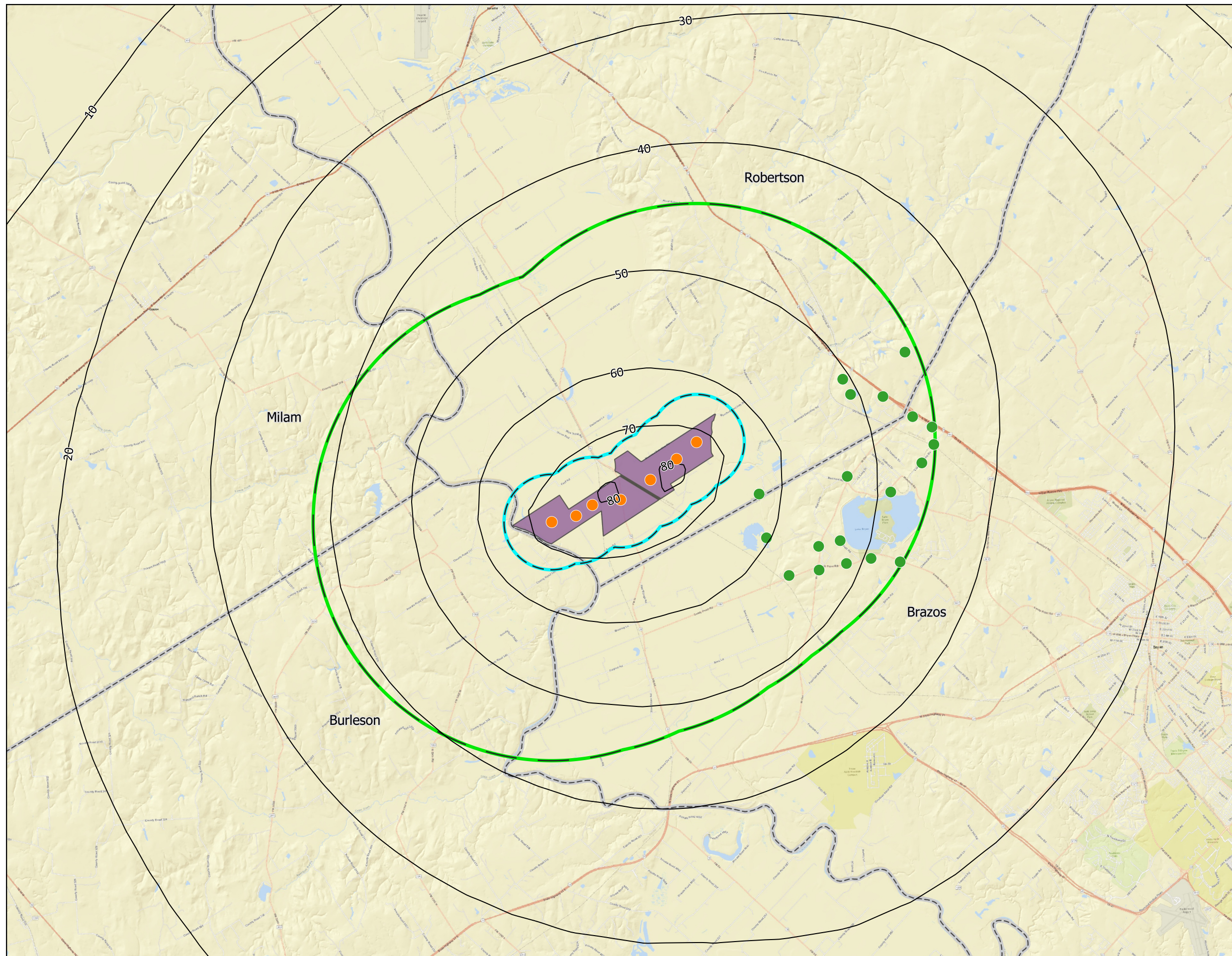


**Figure 10 – Milano WSC - Rita Test Well**  
**Texas Water Development Board Number 59-20-410**



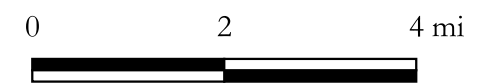
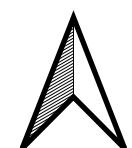
**Figure 11 – City of Bryan Well No. 16**  
**Texas Water Development Board Number 59-21-209**





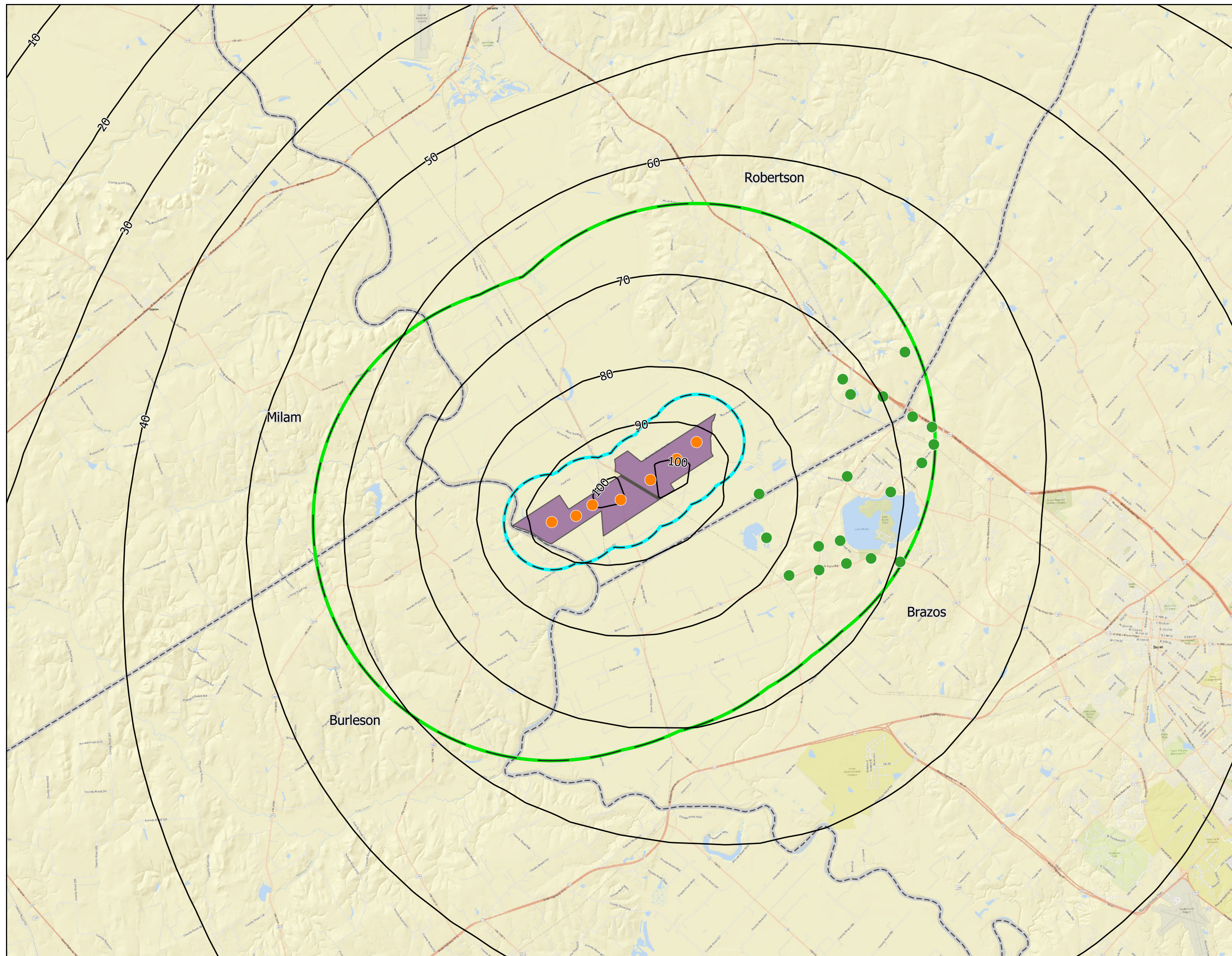
**Explanation**

- Proposed Simsboro Wells
- Simsboro 5 Mile Radius from Well Locations
- Simsboro 1 Mile Radius from Well Locations
- 1-Year Modeled Drawdown - GAM Contour Interval = 10 feet
- Hollybrook Property
- Counties
- BVGCD Reported Wells w/in 5 Miles**
- Simsboro



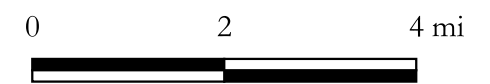
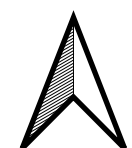
**DTB Investments, LP**

Figure 14: 1-Year GAM Drawdown Contours - Simsboro



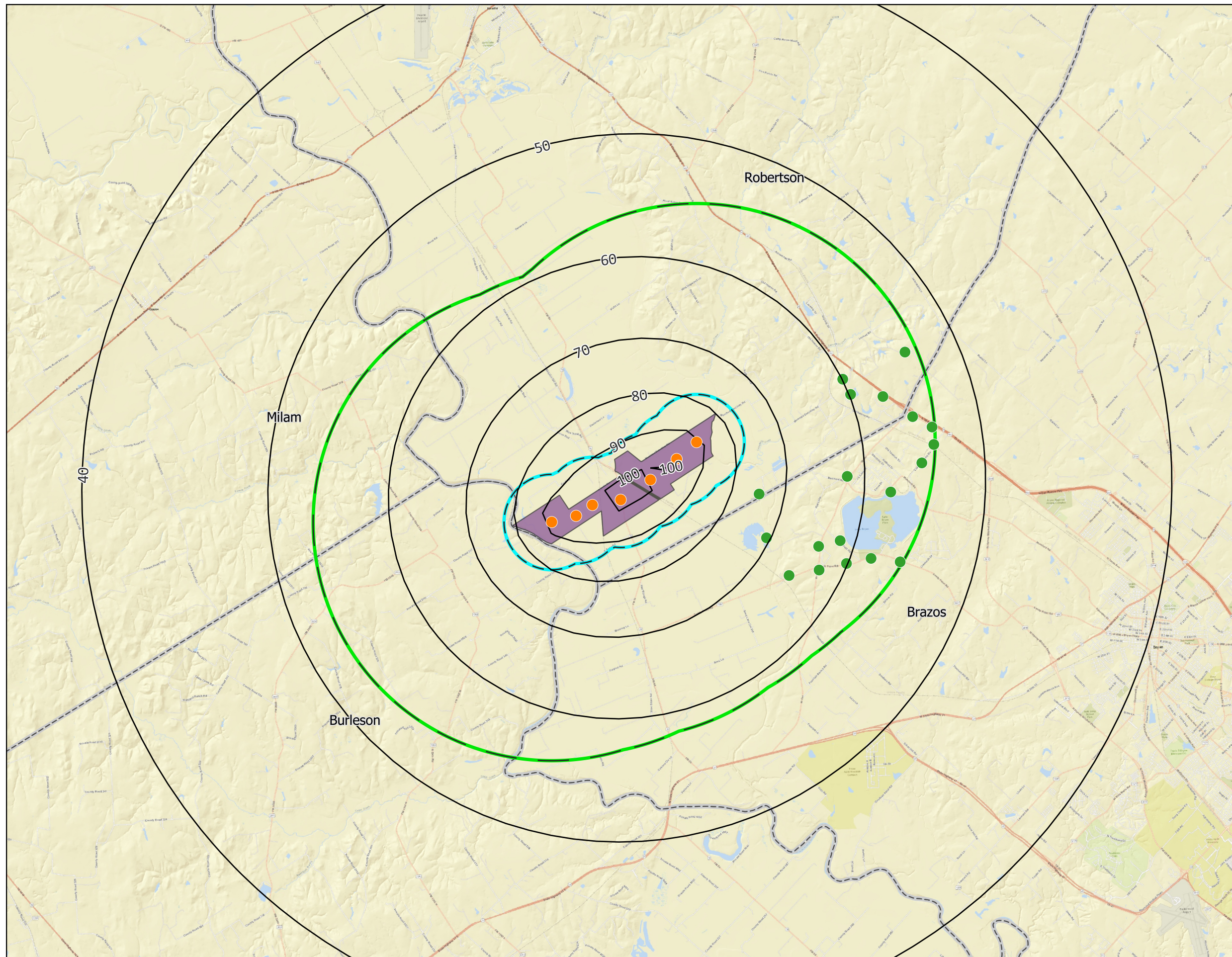
**Explanation**

- Proposed Simsboro Wells
- Simsboro 5 Mile Radius from Well Locations
- Simsboro 1 Mile Radius from Well Locations
- 10-Year Modeled Drawdown - GAM Contour Interval = 10 feet
- Hollybrook Property
- Counties
- BVGCD Reported Wells w/in 5 Miles**
- Simsboro



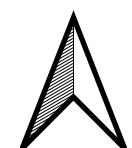
**DTB Investments, LP**

Figure 15: 10-Year GAM Drawdown Contours - Simsboro



**Explanation**

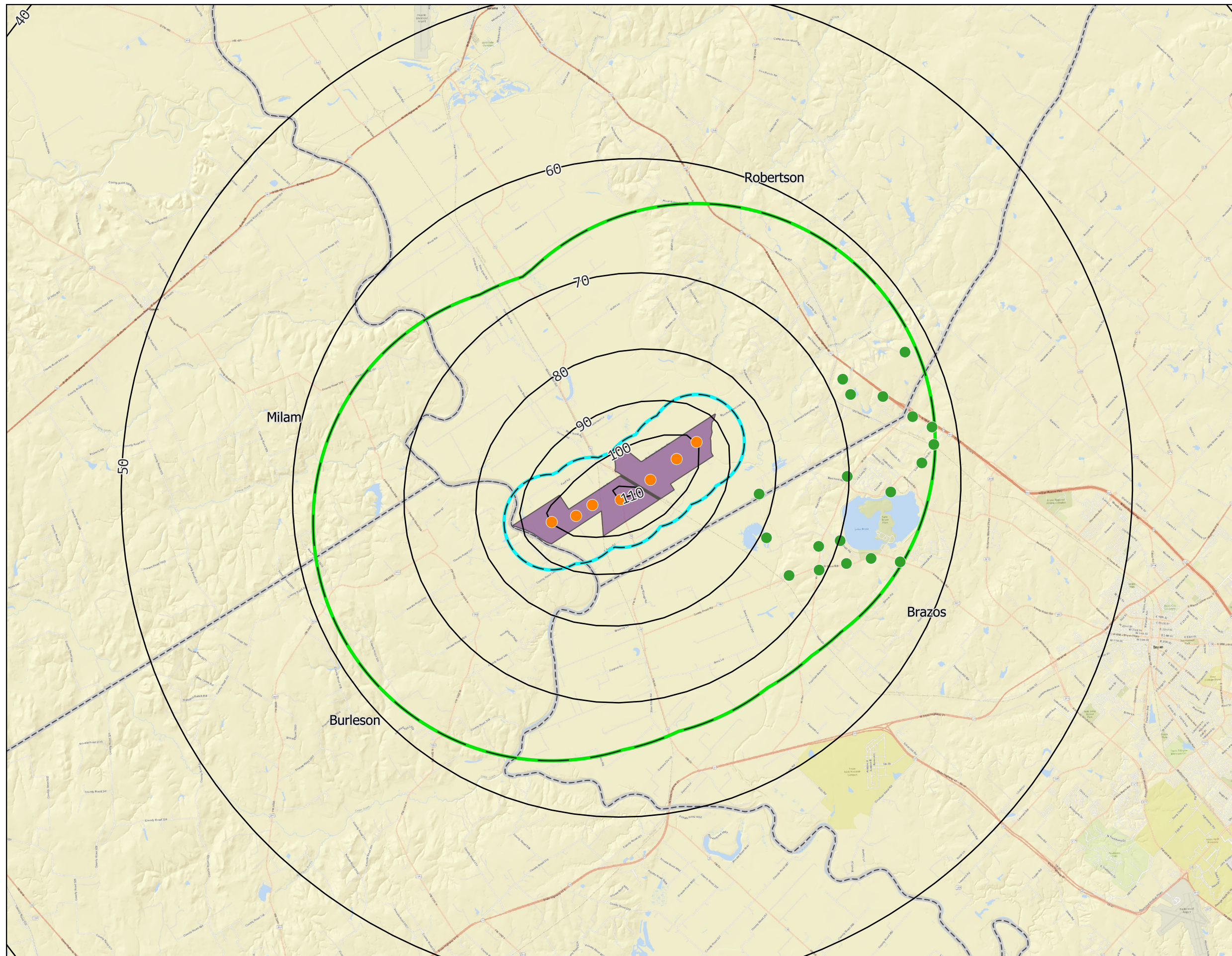
- Proposed Simsboro Wells
- Simsboro 5 Mile Radius from Well Locations
- Simsboro 1 Mile Radius from Well Locations
- 1-Yr Modeled Drawdown-Analytical Contour Interval = 10 feet
- Hollybrook Property
- Counties
- BVGCD Reported Wells w/in 5 Miles**
- Simsboro



**DTB Investments, LP**

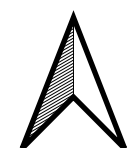
Figure 18: 1-Year Analytical Drawdown Contours - Simsboro





**Explanation**

- Proposed Simsboro Wells
- Simsboro 5 Mile Radius from Well Locations
- Simsboro 1 Mile Radius from Well Locations
- 10-Yr Modeled Drawdown-Analytical Contour Interval = 10 feet
- Hollybrook Property
- Counties
- BVGCD Reported Wells w/in 5 Miles**
- Simsboro



**DTB Investments, LP**

Figure 19: 10-Year Analytical Drawdown Contours - Simsboro