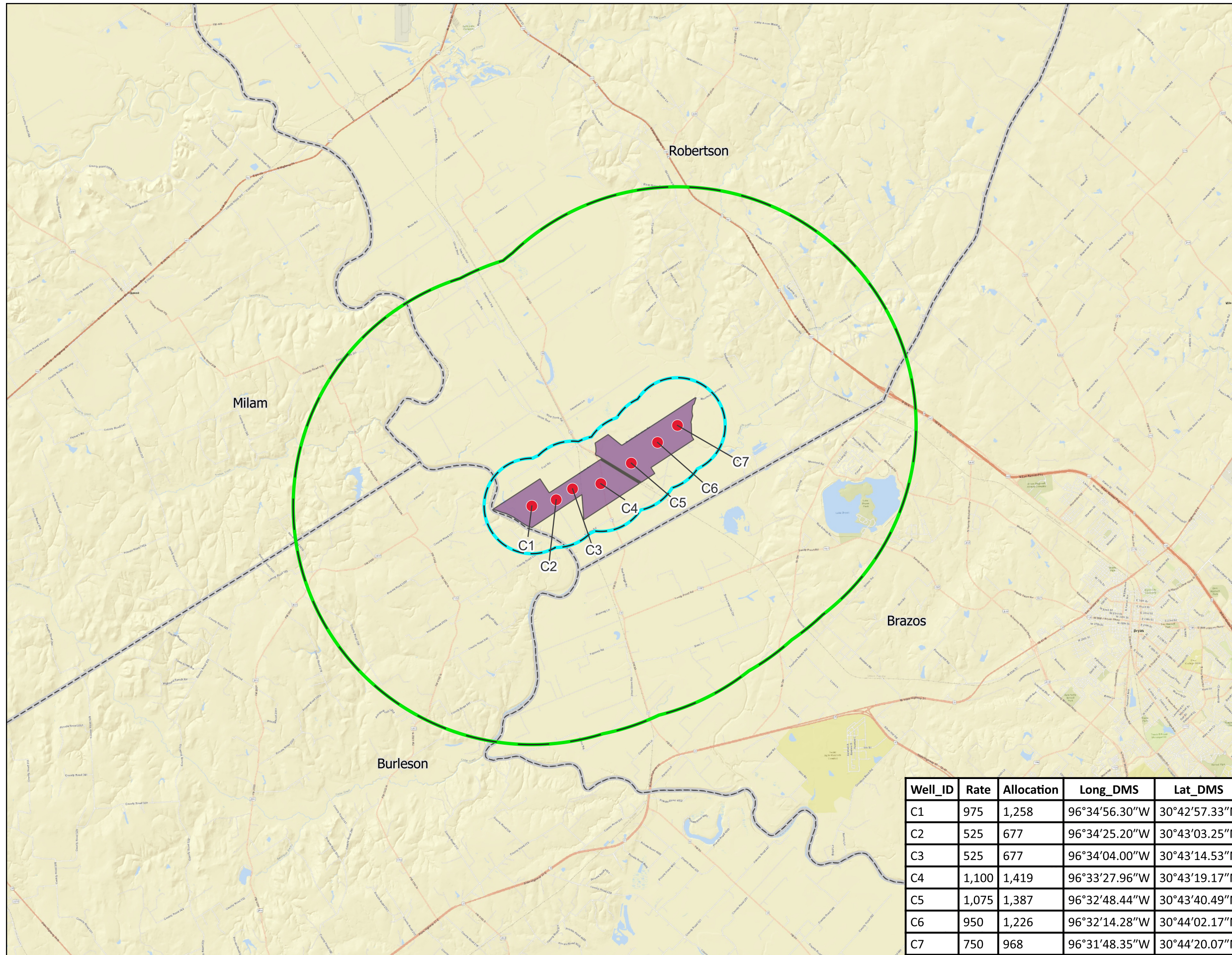


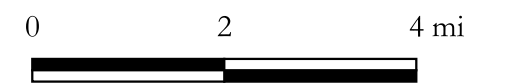
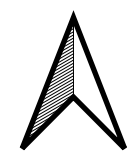


ATTACHMENT 1
– FIGURES



Explanation

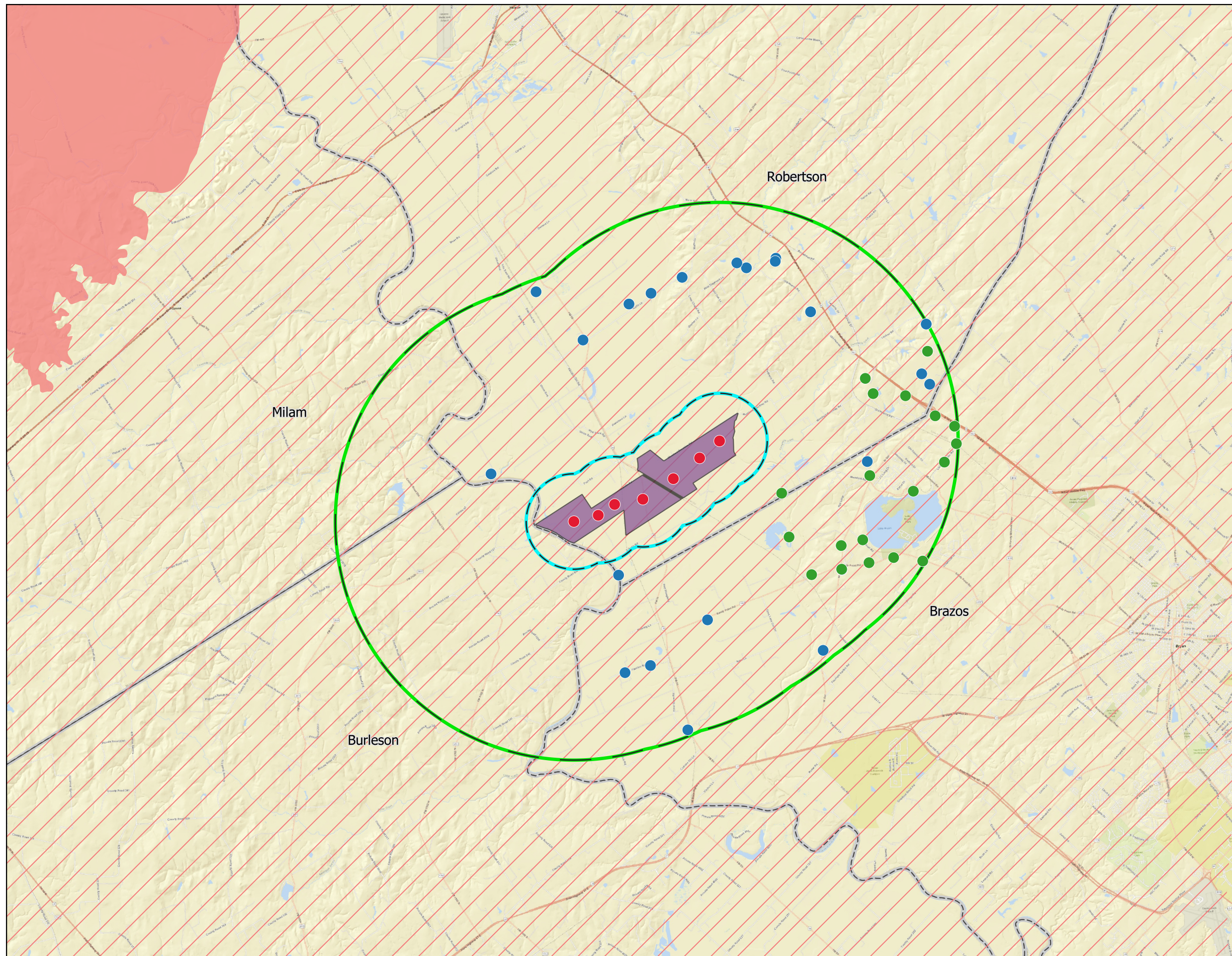
- Proposed Carrizo Wells
- 5 Mile Radius from Well Locations
- 1 Mile Radius from Well Locations
- Hollybrook Property
- ▭ Counties



Well_ID	Rate	Allocation	Long_DMS	Lat_DMS
C1	975	1,258	96°34'56.30"W	30°42'57.33"N
C2	525	677	96°34'25.20"W	30°43'03.25"N
C3	525	677	96°34'04.00"W	30°43'14.53"N
C4	1,100	1,419	96°33'27.96"W	30°43'19.17"N
C5	1,075	1,387	96°32'48.44"W	30°43'40.49"N
C6	950	1,226	96°32'14.28"W	30°44'02.17"N
C7	750	968	96°31'48.35"W	30°44'20.07"N

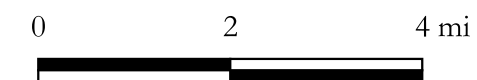
DTB Investments, LP

Figure 1:
Carrizo Location Map



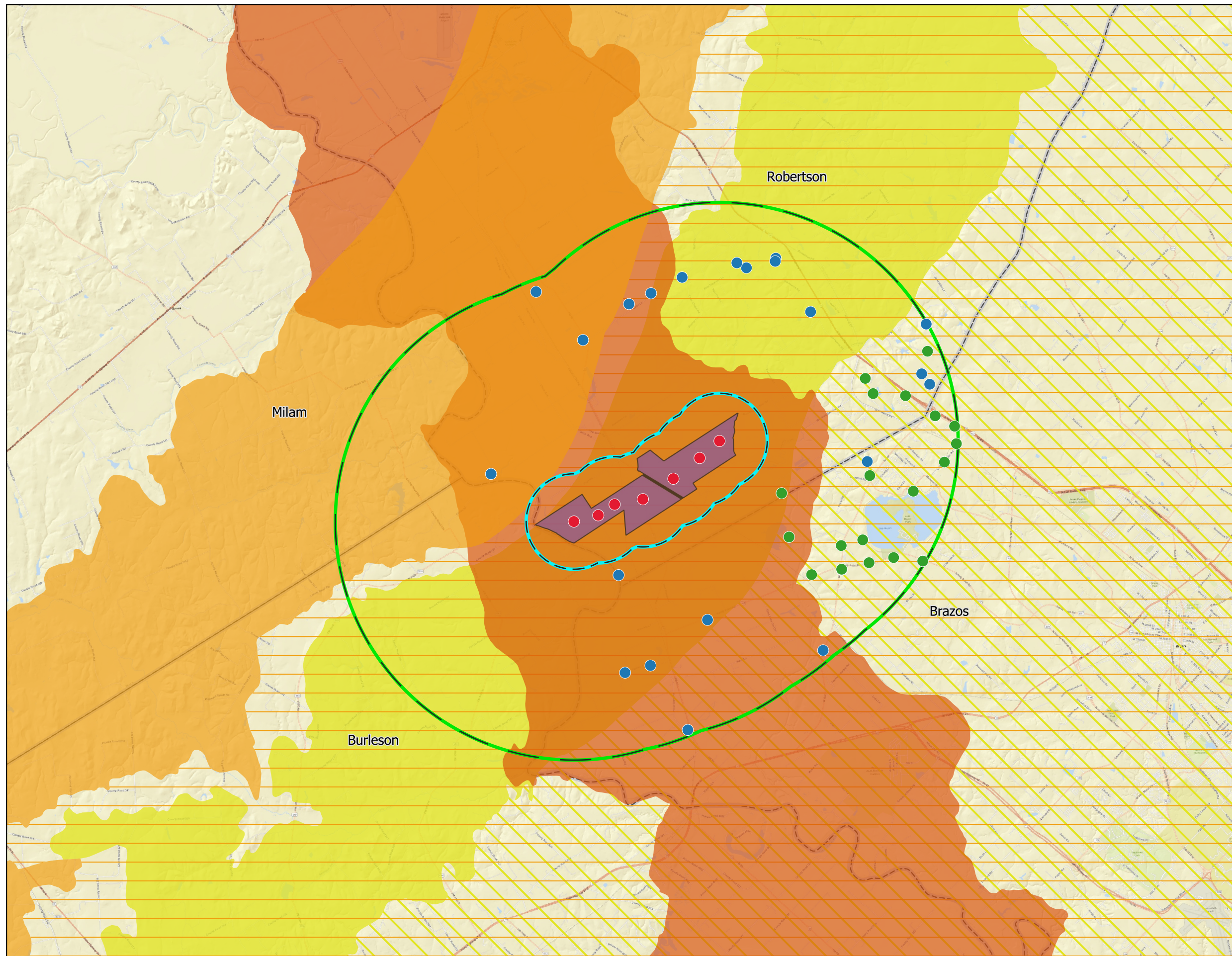
Explanation

- Proposed Well Location
- 5 Mile Radius from Well Locations
- 1 Mile Radius from Well Locations
- Hollybrook Property
- ▭ Counties
- Major Aquifers**
- Carrizo - Wilcox (outcrop)
- ▨ Carrizo - Wilcox (subcrop)
- BVGCD Reported Wells w/in 5 Miles**
- Carrizo
- Simsboro



DTB Investments, LP

Figure 3:
Major Aquifers



Explanation

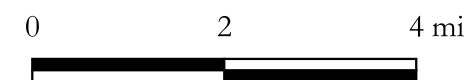
- Proposed Well Location
- 5 Mile Radius from Well Locations
- 1 Mile Radius from Well Locations
- Hollybrook Property
- ▭ Counties

Minor Aquifers

- Brazos River Alluvium
- Queen City (outcrop)
- Queen City (subcrop)
- Sparta (outcrop)
- Sparta (subcrop)

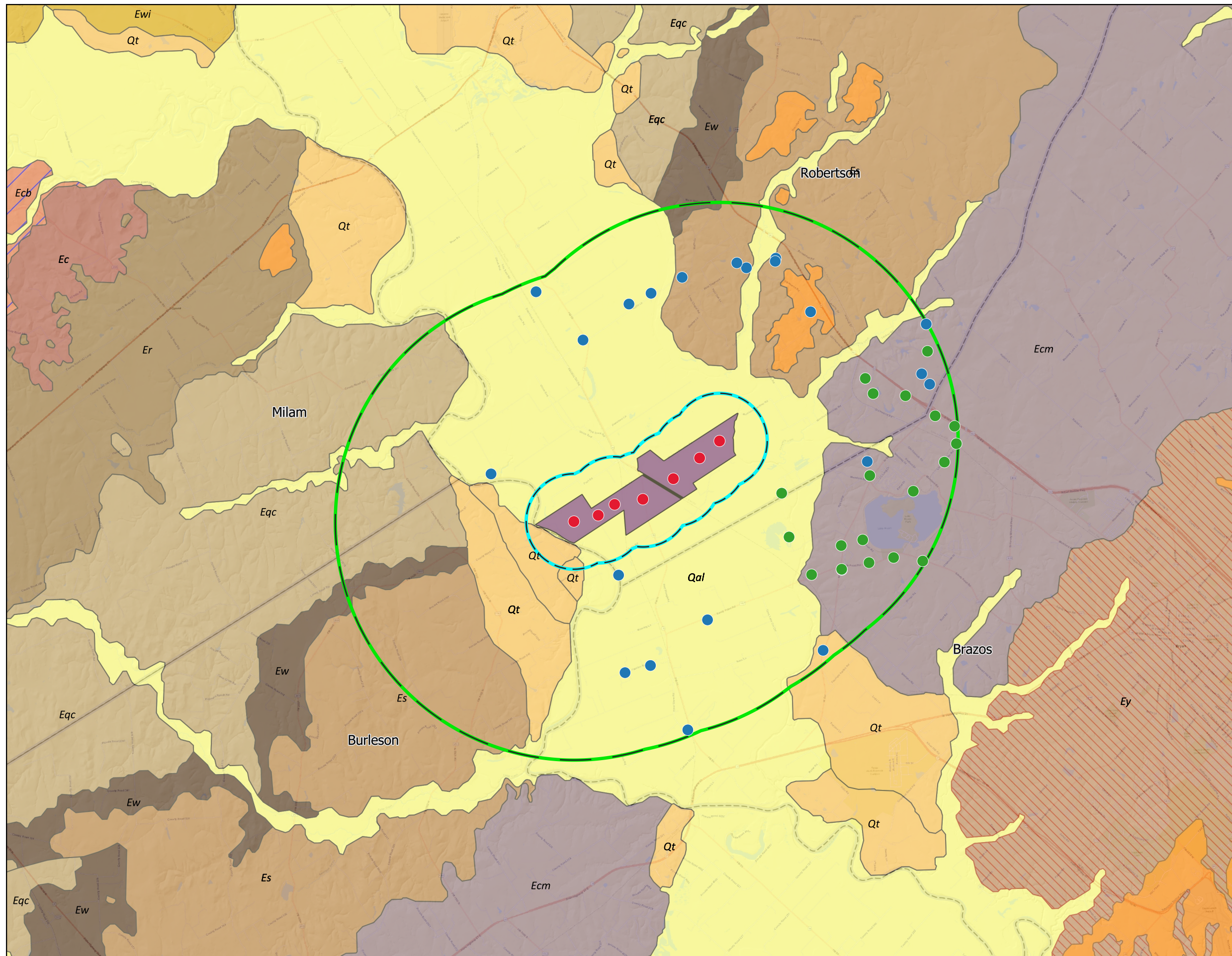
BVGCD Reported Wells w/in 5 Miles

- Carrizo
- Simsboro



DTB Investments, LP

Figure 4:
Minor Aquifers



Explanation

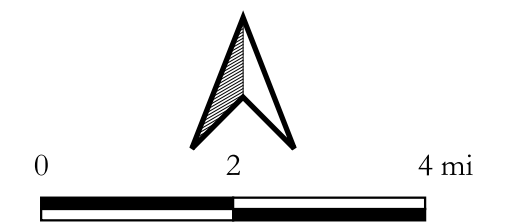
- Proposed Well Location
- 5 Mile Radius from Well Locations
- 1 Mile Radius from Well Locations
- Hollybrook Property
- Counties

BVGC Reported Wells w/in 5 Miles

- Carrizo
- Simsboro

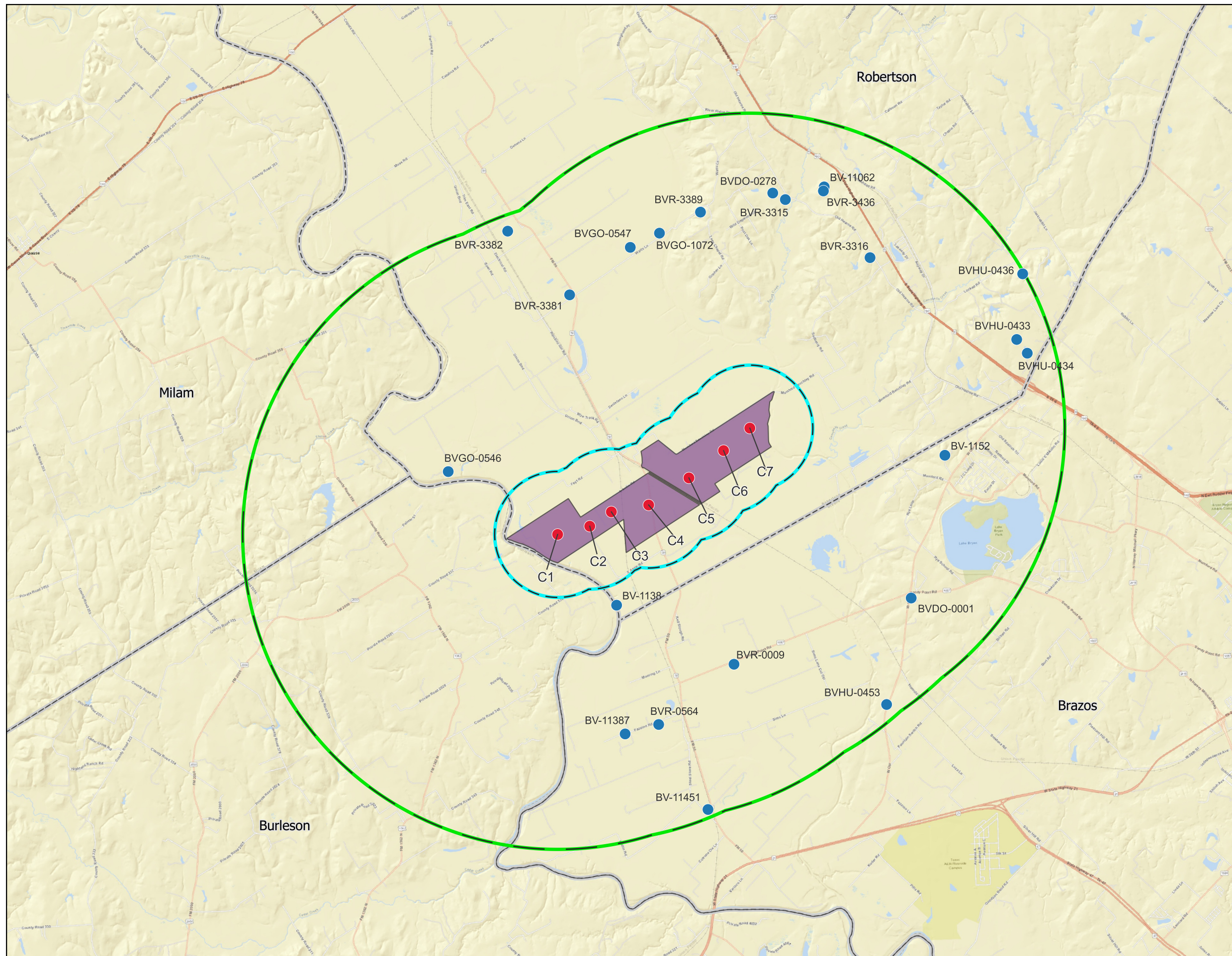
Surface Geology

- Qal - Alluvium
- Qt - Fluvial terrace deposits
- Qhg - High gravel deposits
- Ey - Yegua Formation
- Ecm - Cook Mountain Formation
- Es - Sparta Sand
- Ew - Weches Formation
- Eqc - Queen City Sand
- Er - Reklaw Formation
- Ec - Carrizo Sand
- Ewi - Wilcox Group
- Ecb - Calvert Bluff Formation



DTB Investments, LP

Figure 5:
Surface Geology



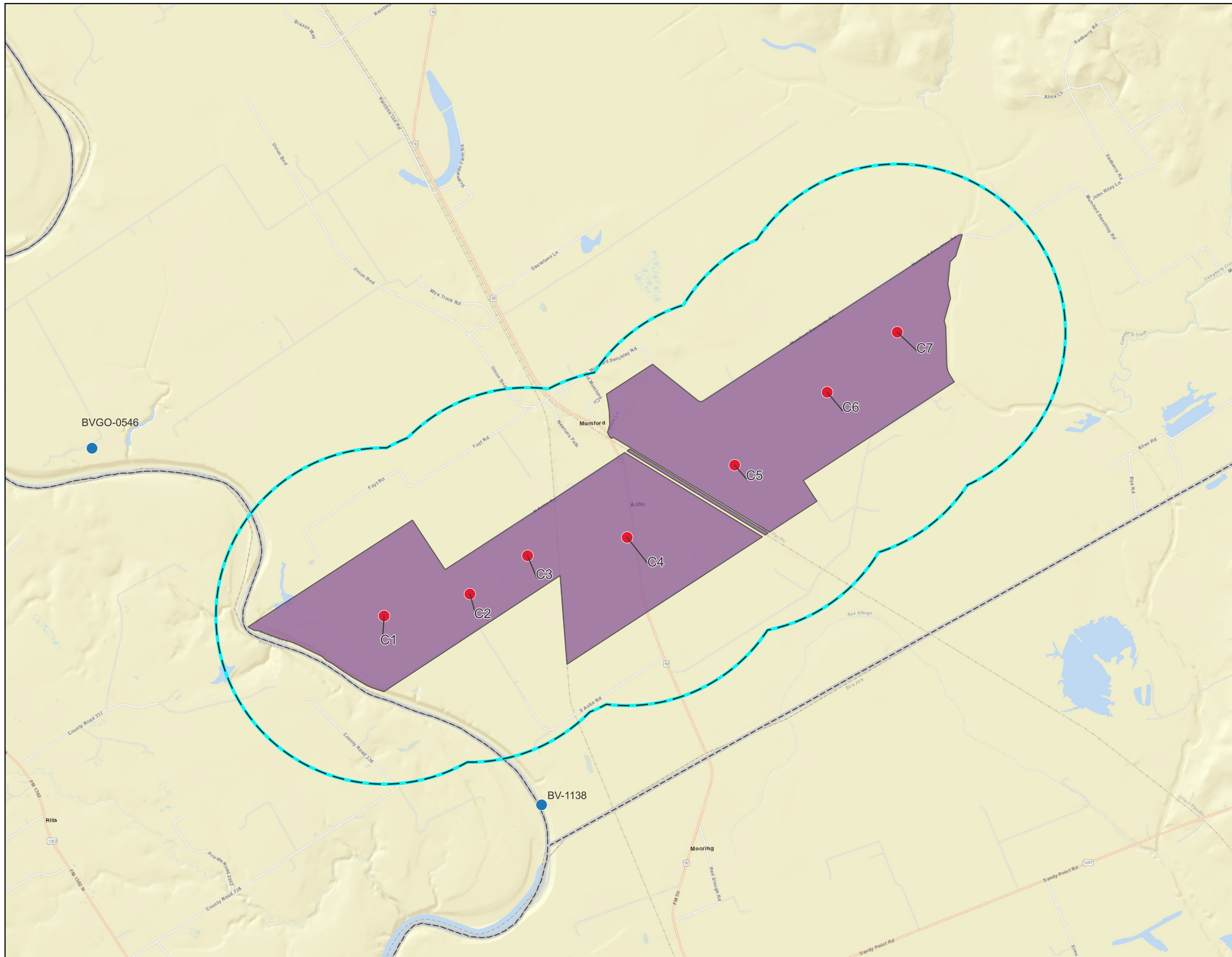
Explanation

- Proposed Carrizo Wells
- 5 Mile Radius from Well Locations
- 1 Mile Radius from Well Locations
- Hollybrook Property
- ▭ Counties
- BVGCD Reported Wells w/in 5 Miles**
- Carrizo



DTB Investments, LP

Figure 6: Carrizo Well Locations w/in 5 Miles of Proposed Wells

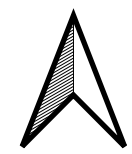


Explanation

- Proposed Carrizo Wells
- ⊖ 1 Mile Radius from Well Locations
- ⊖ 5 Mile Radius from Well Locations
- Hollybrook Property
- Counties

BVGCD Reported Wells w/in 5 Miles

- Carrizo

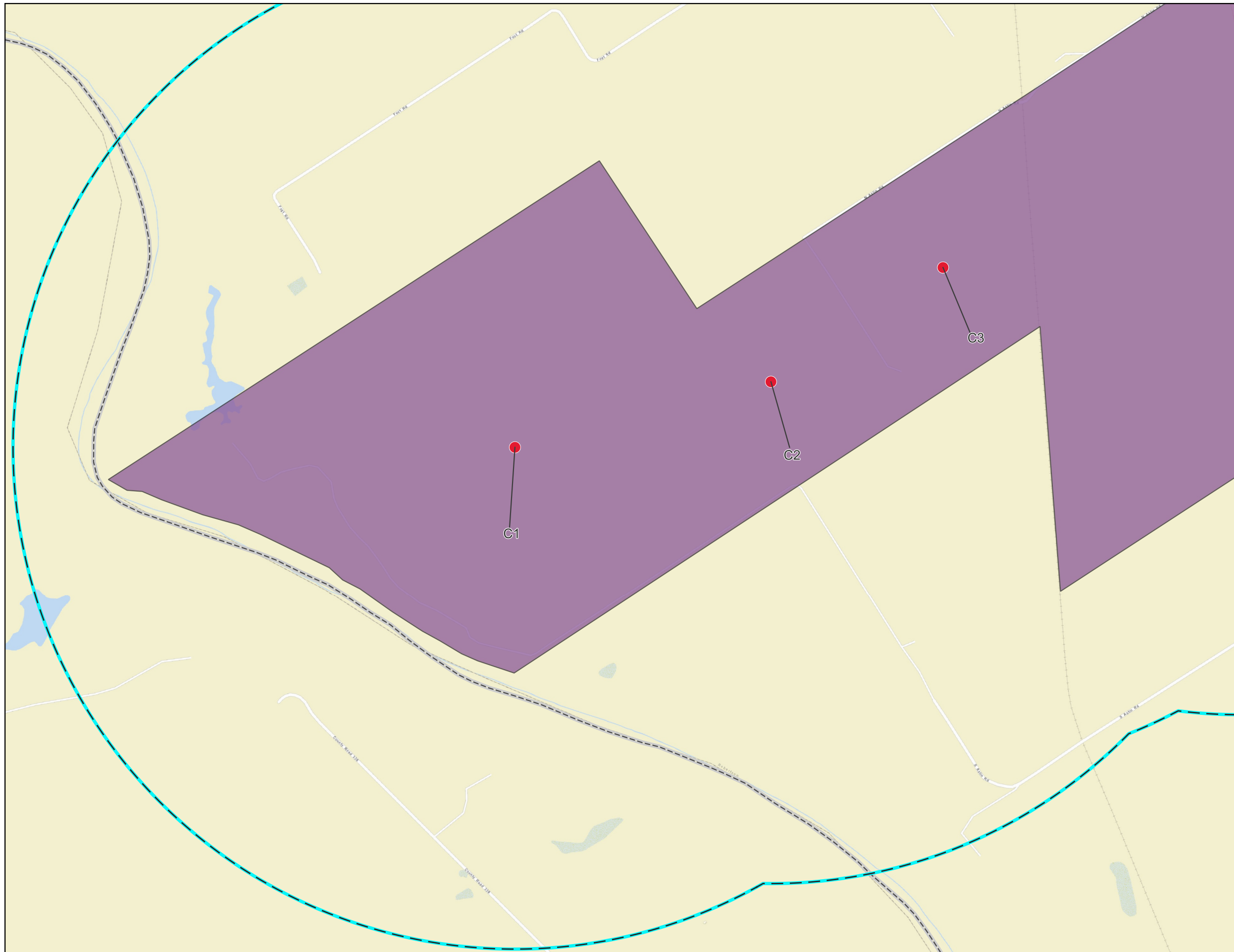


0 1,000,2,000 ft



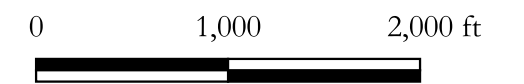
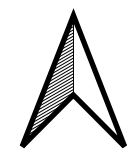
DTB Investments, LP

Figure 7: Carrizo Well Locations w/in 1 Mile of Proposed Wells



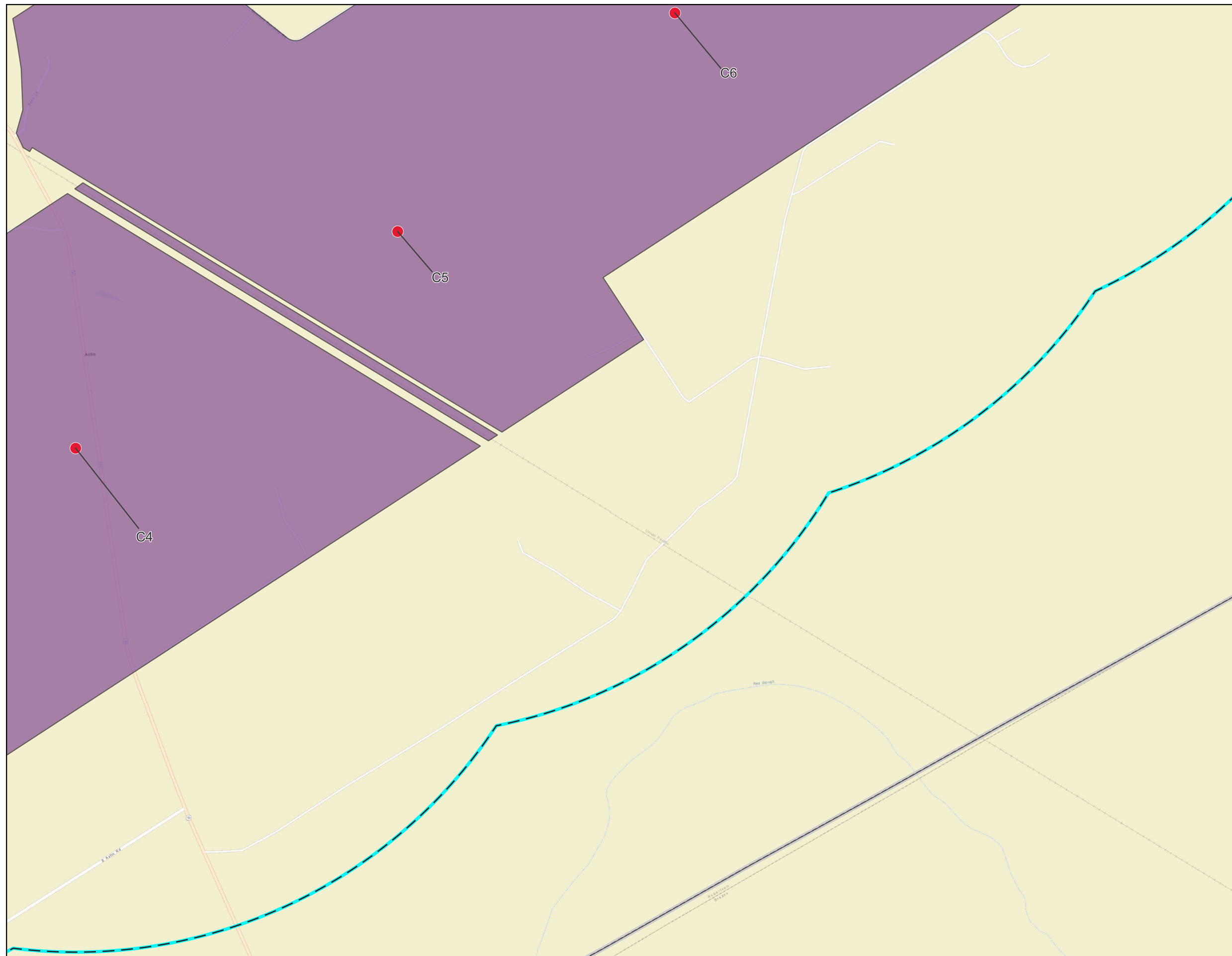
Explanation

- Proposed Carrizo Wells
- 1 Mile Radius from Well Locations
- 5 Mile Radius from Well Locations
- Hollybrook Property
- Counties



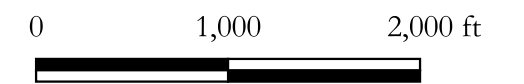
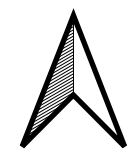
DTB Investments, LP

Figure 7a: Carrizo Well Locations w/in 1 Mile of Proposed Wells



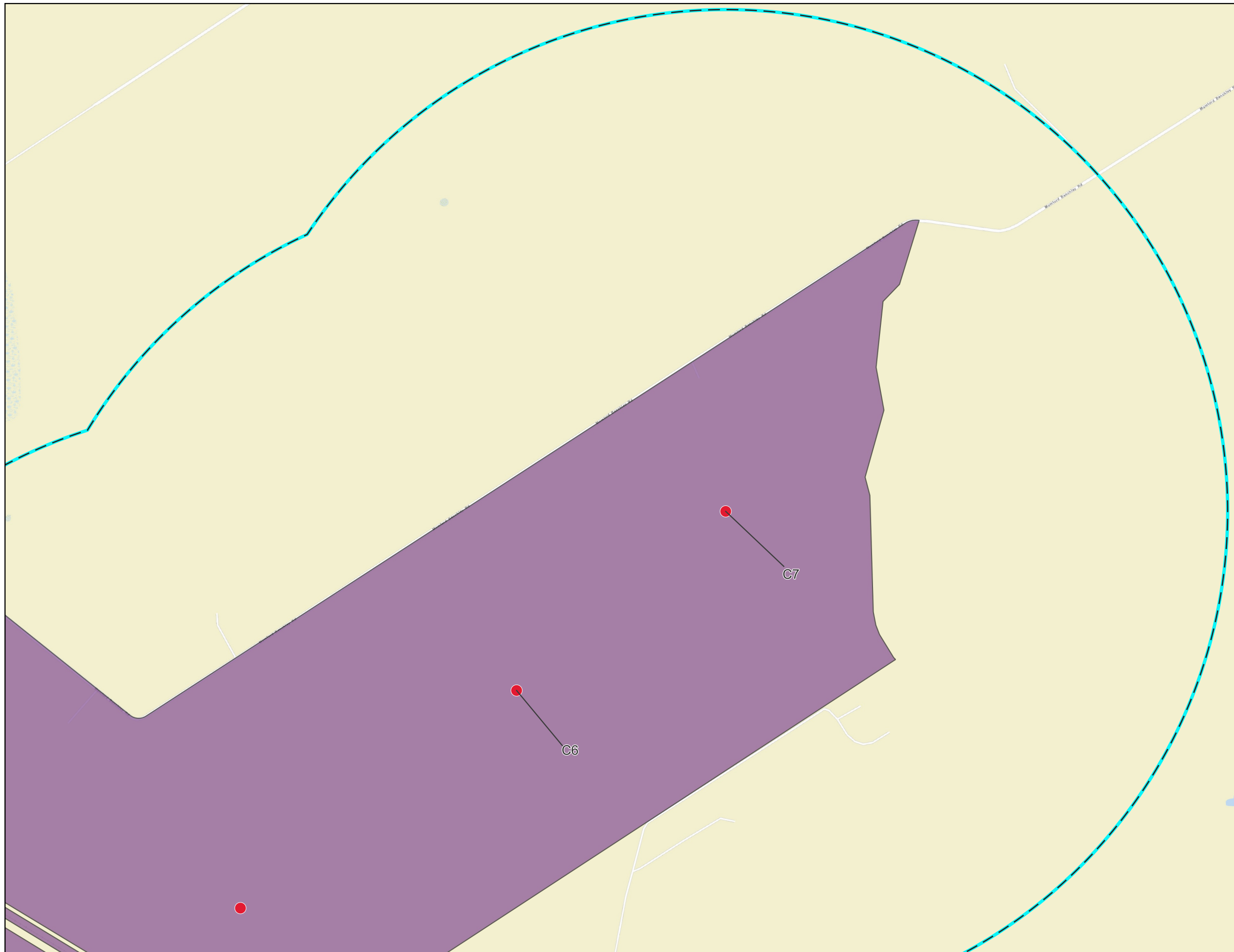
Explanation

- Proposed Carrizo Wells
- 1 Mile Radius from Well Locations
- 5 Mile Radius from Well Locations
- Hollybrook Property
- Counties



DTB Investments, LP

Figure 7b: Carrizo Well Locations w/in 1 Mile of Proposed Wells

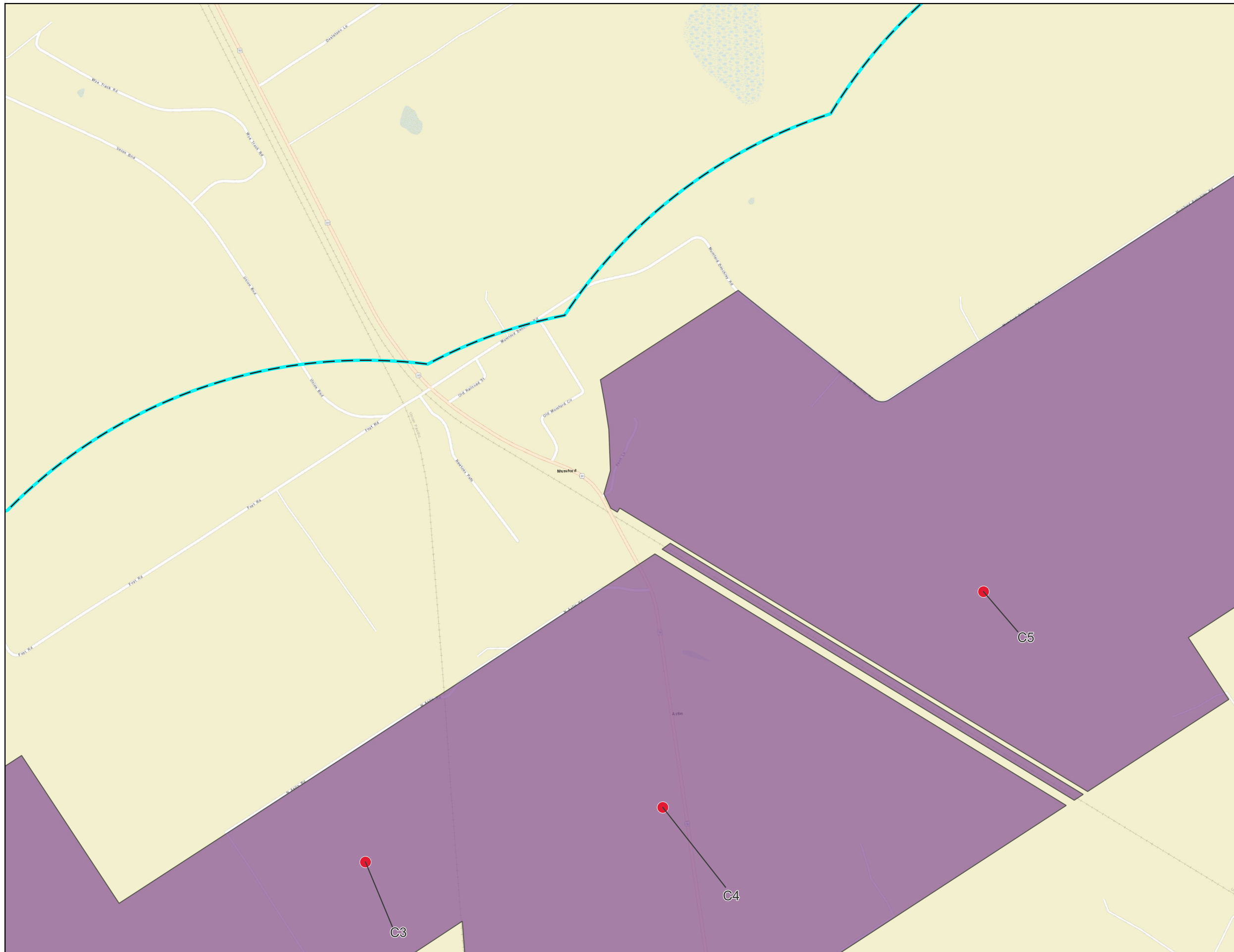


Explanation

- Proposed Carrizo Wells
- 1 Mile Radius from Well Locations
- 5 Mile Radius from Well Locations
- Hollybrook Property
- ▭ Counties

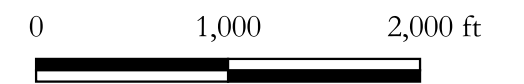
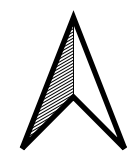
DTB Investments, LP

Figure 7c: Carrizo Well Locations w/in 1 Mile of Proposed Wells



Explanation

- Proposed Carrizo Wells
- 1 Mile Radius from Well Locations
- 5 Mile Radius from Well Locations
- Hollybrook Property
- Counties



DTB Investments, LP

Figure 7d: Carrizo Well Locations w/in 1 Mile of Proposed Wells

Figure 10 – Milano WSC - Rita Test Well
Texas Water Development Board Number 59-20-410

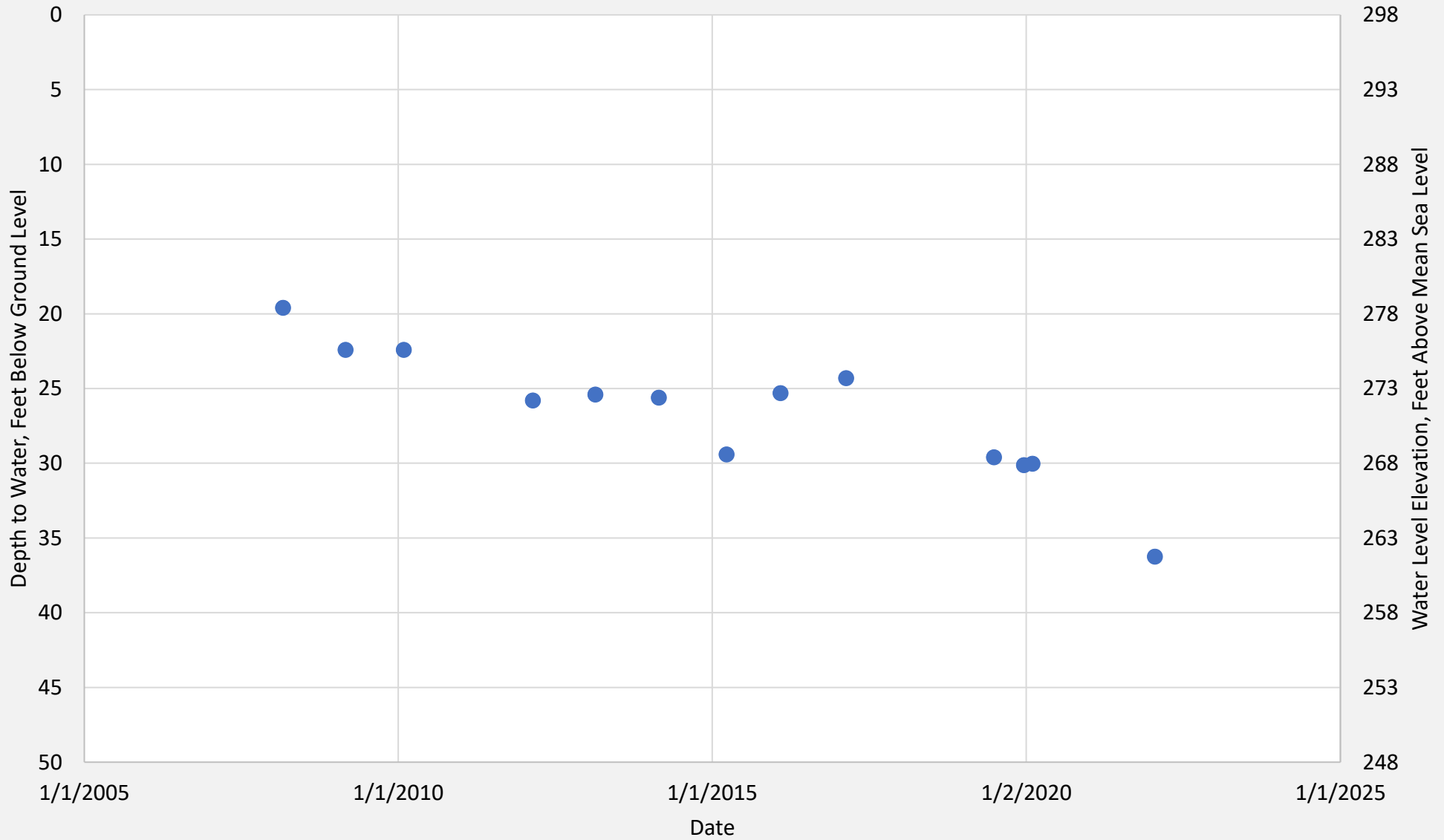
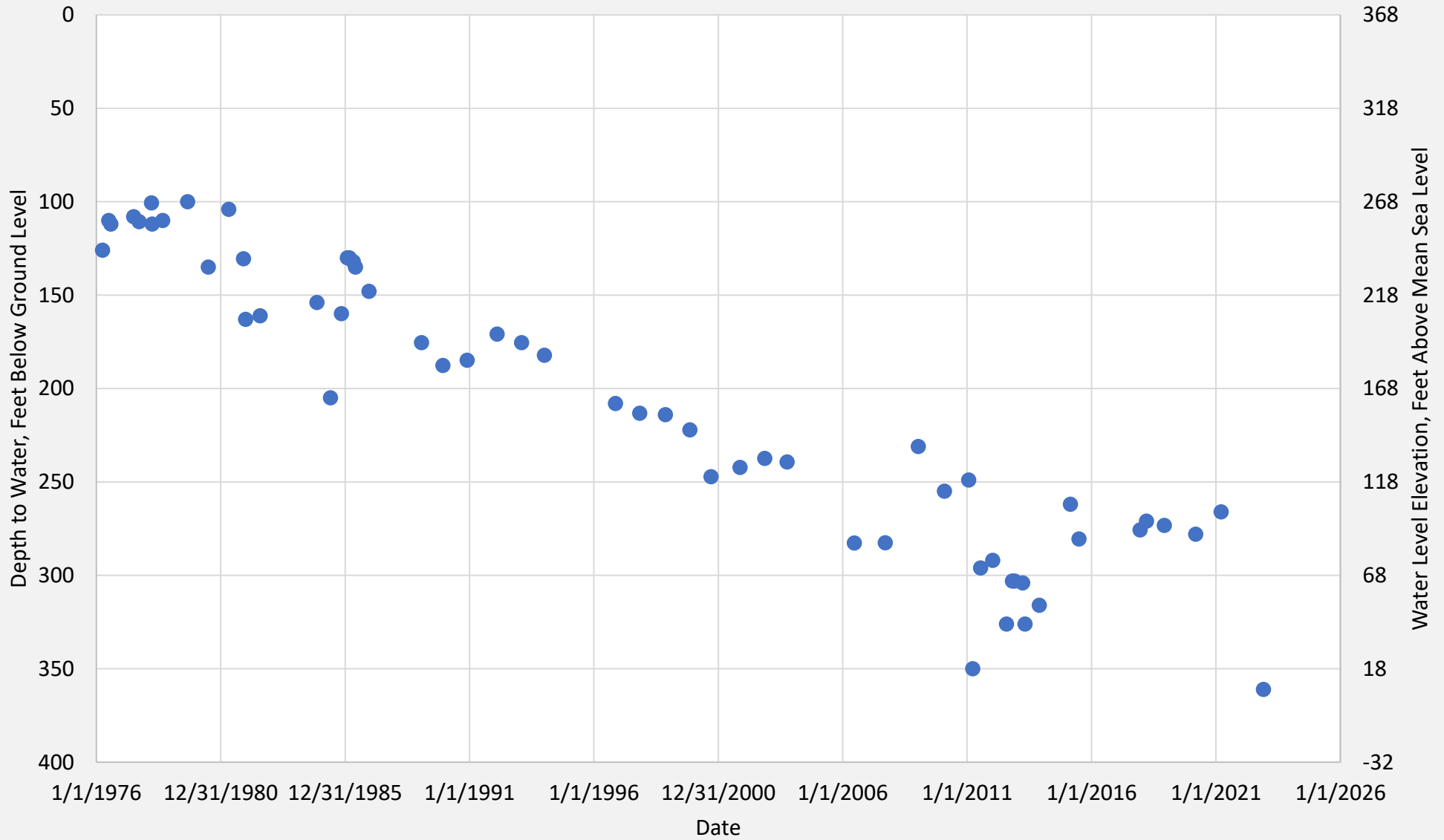
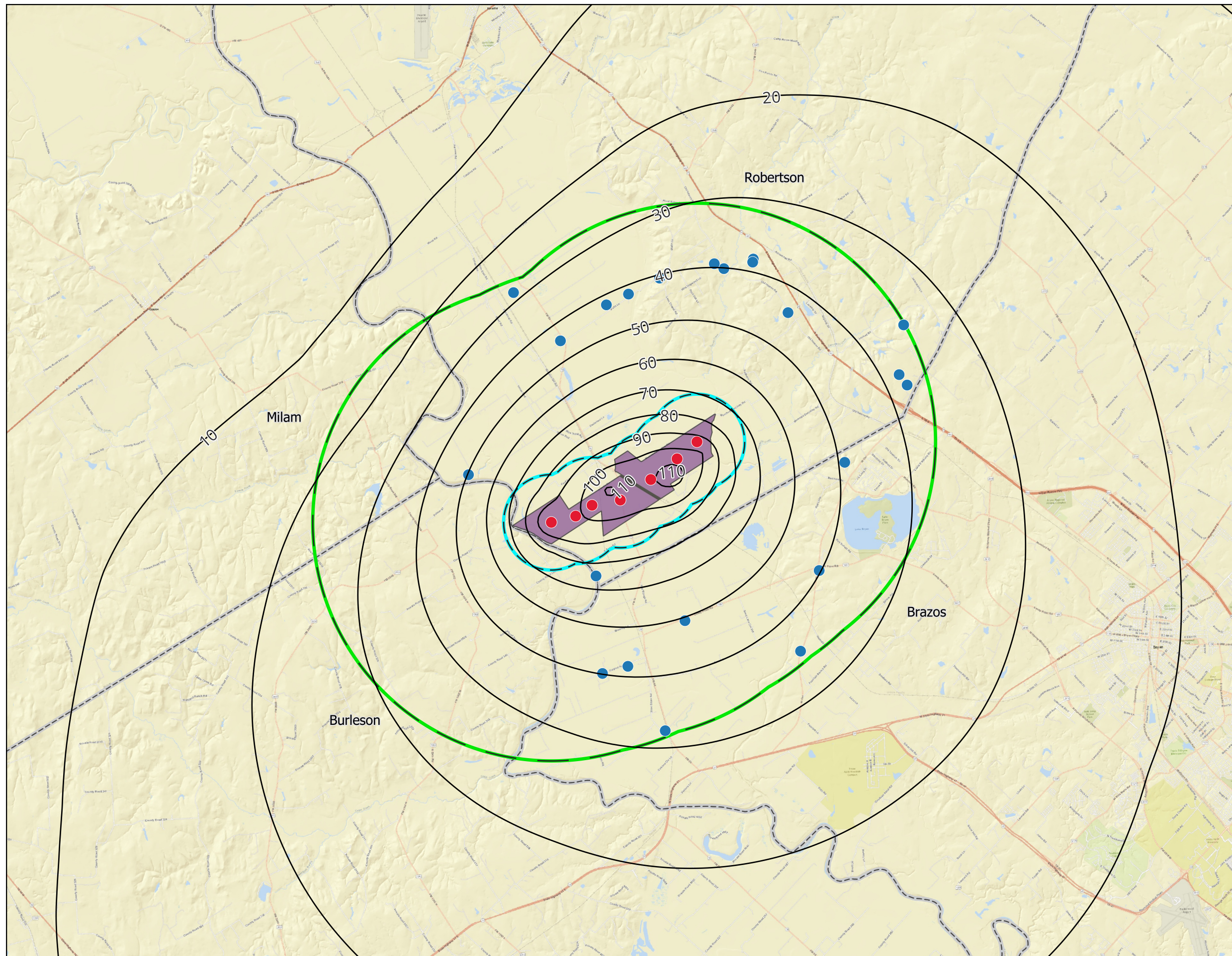


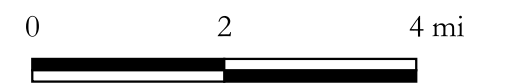
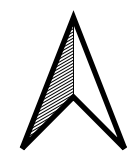
Figure 11 – City of Bryan Well No. 16
Texas Water Development Board Number 59-21-209





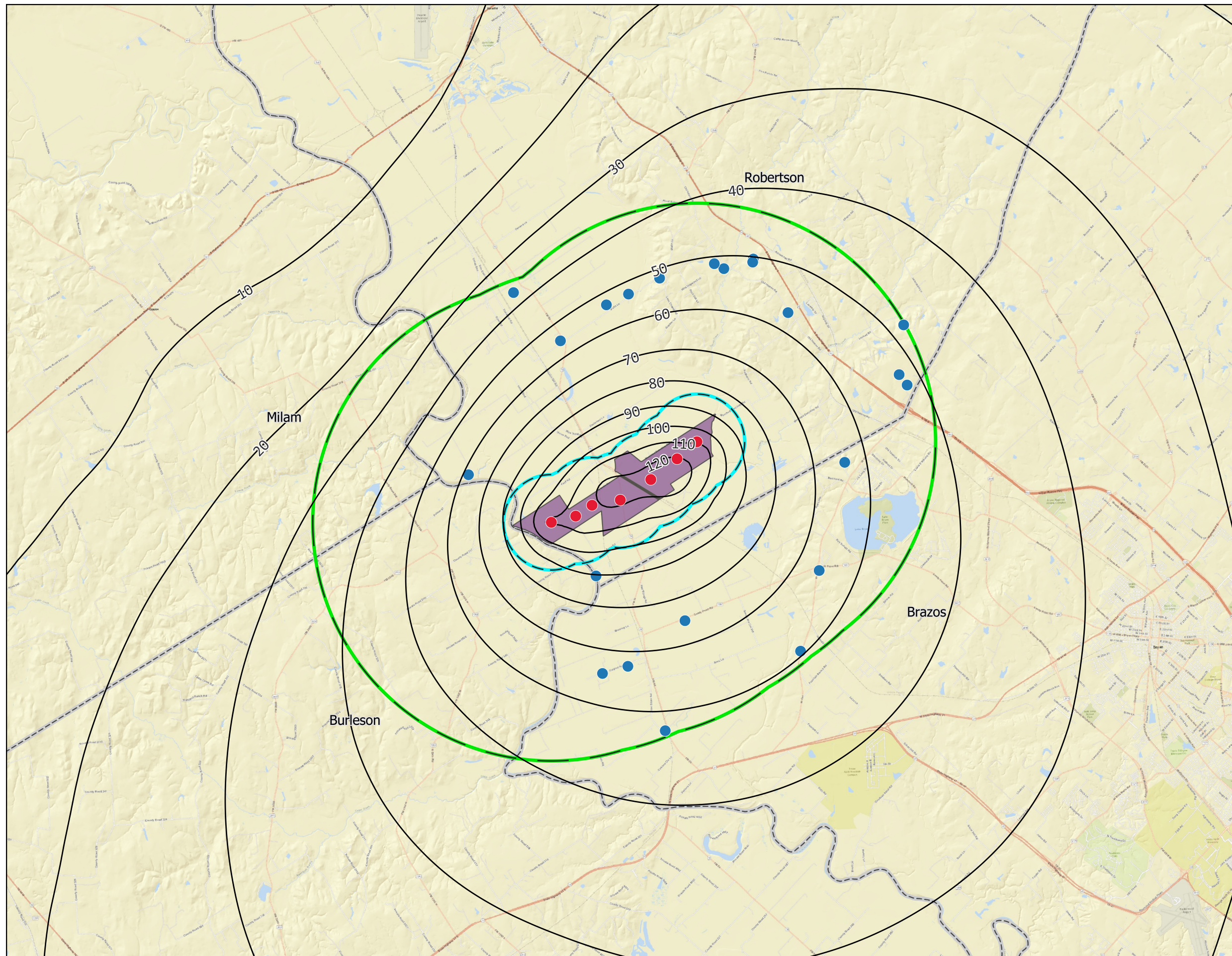
Explanation

- Proposed Carrizo Wells
- Carrizo 5 Mile Radius from Well Locations
- Carrizo 1 Mile Radius from Well Locations
- 1-Year Modeled Drawdown - GAM Contour Interval = 10 feet
- Hollybrook Property
- ▭ Counties
- BVGCD Reported Wells w/in 5 Miles**
- Carrizo



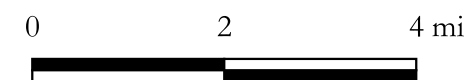
DTB Investments, LP

Figure 12: 1-Year GAM Drawdown Contours - Carrizo



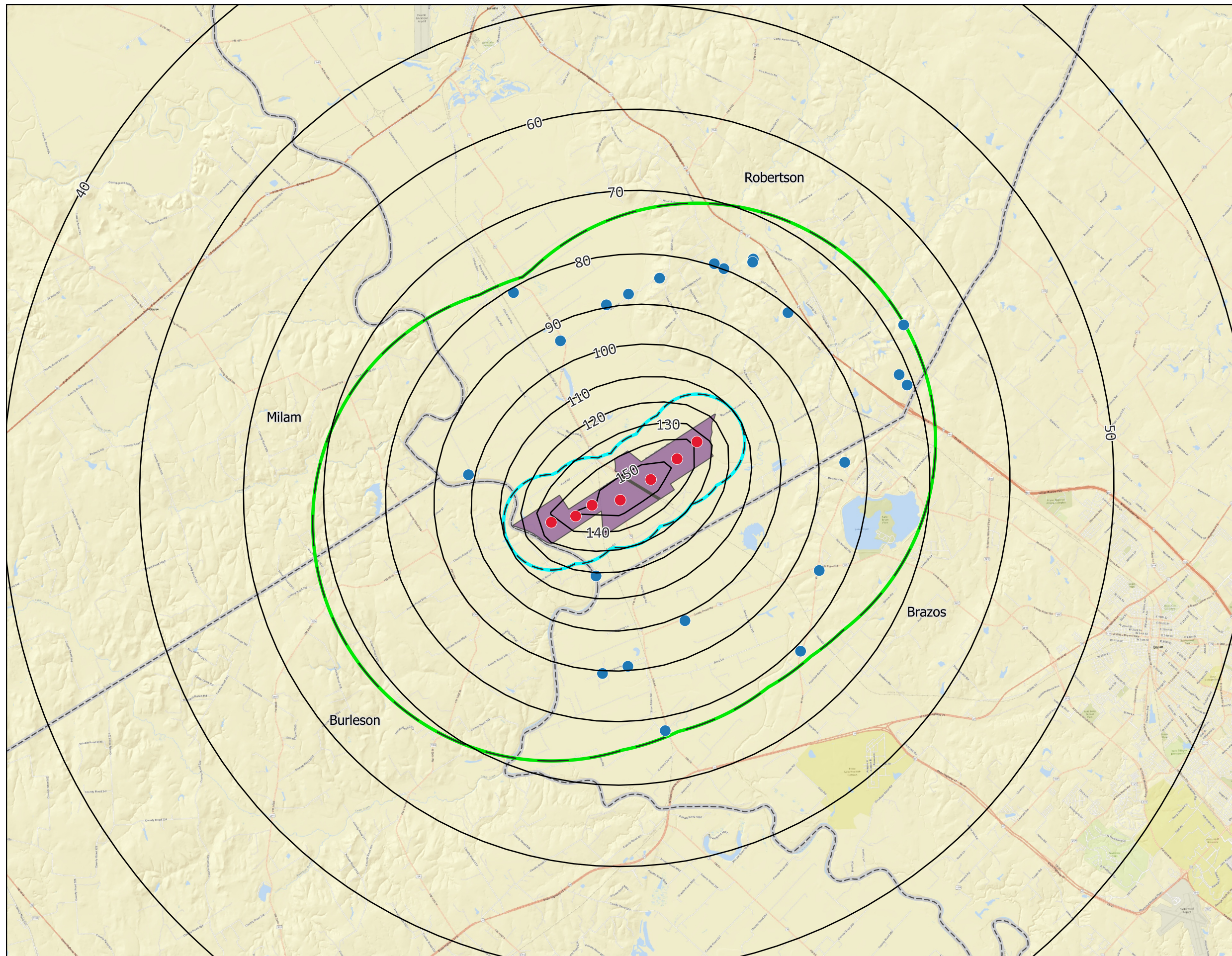
Explanation

- Proposed Carrizo Wells
- Carrizo 5 Mile Radius from Well Locations
- Carrizo 1 Mile Radius from Well Locations
- 10-Year Modeled Drawdown - GAM Contour Interval = 10 feet
- Hollybrook Property
- ▭ Counties
- BVGCD Reported Wells w/in 5 Miles**
- Carrizo



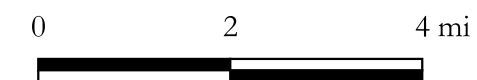
DTB Investments, LP

Figure 13: 10-Year GAM Drawdown Contours - Carrizo



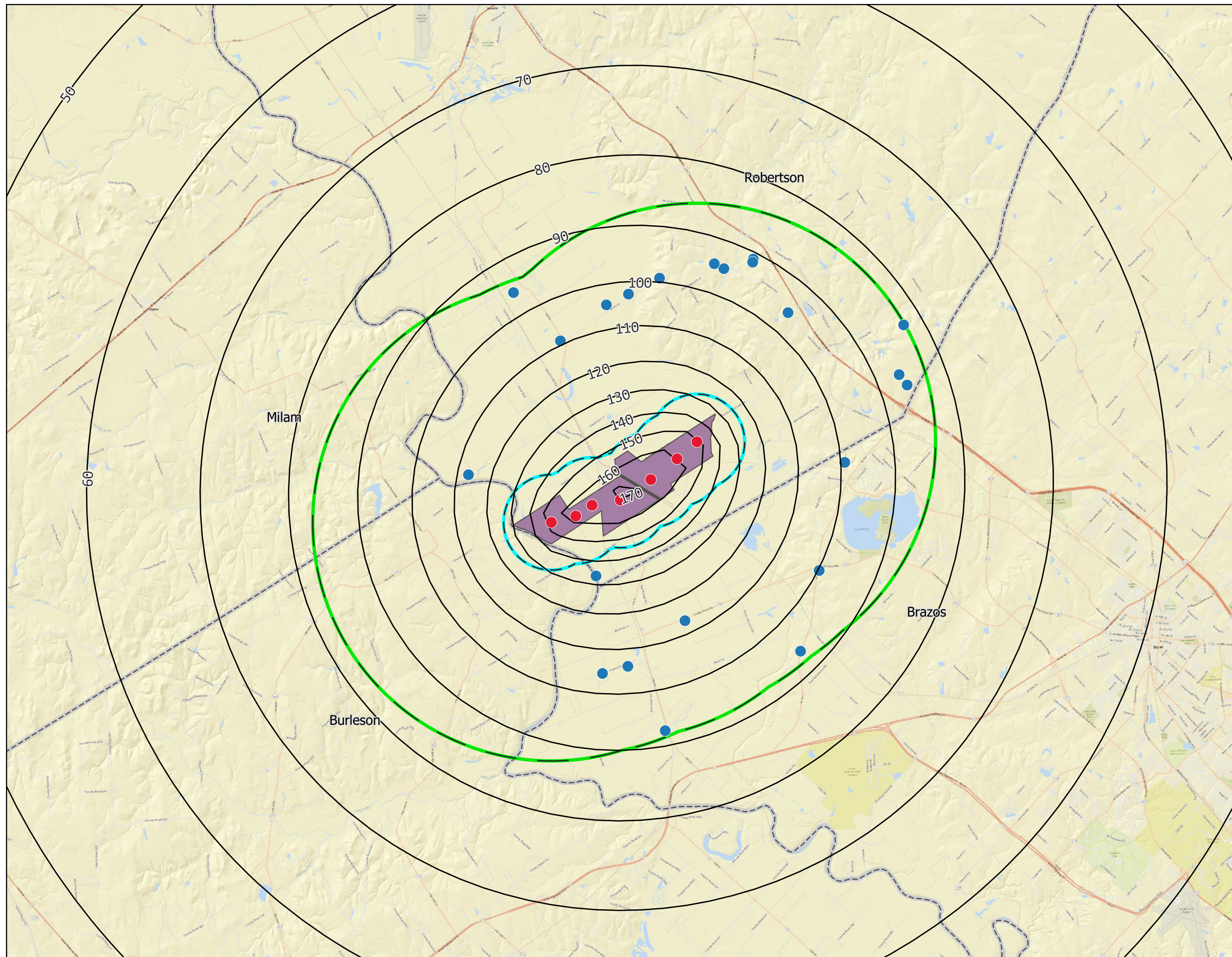
Explanation

- Proposed Carrizo Wells
- Carrizo 5 Mile Radius from Well Locations
- Carrizo 1 Mile Radius from Well Locations
- 1-Yr Modeled Drawdown-Analytical Contour Interval = 10 feet
- Hollybrook Property
- ▭ Counties
- BVGCD Reported Wells w/in 5 Miles**
- Carrizo



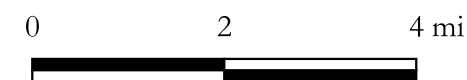
DTB Investments, LP

Figure 16: 1-Year Analytical Drawdown Contours - Carrizo



Explanation

- Proposed Carrizo Wells
- Carrizo 5 Mile Radius from Well Locations
- Carrizo 1 Mile Radius from Well Locations
- 10-Yr Modeled Drawdown-Analytical Contour Interval = 10 feet
- Hollybrook Property
- ▭ Counties
- BVGCD Reported Wells w/in 5 Miles**
- Carrizo



DTB Investments, LP

Figure 17: 10-Year Analytical Drawdown Contours - Carrizo