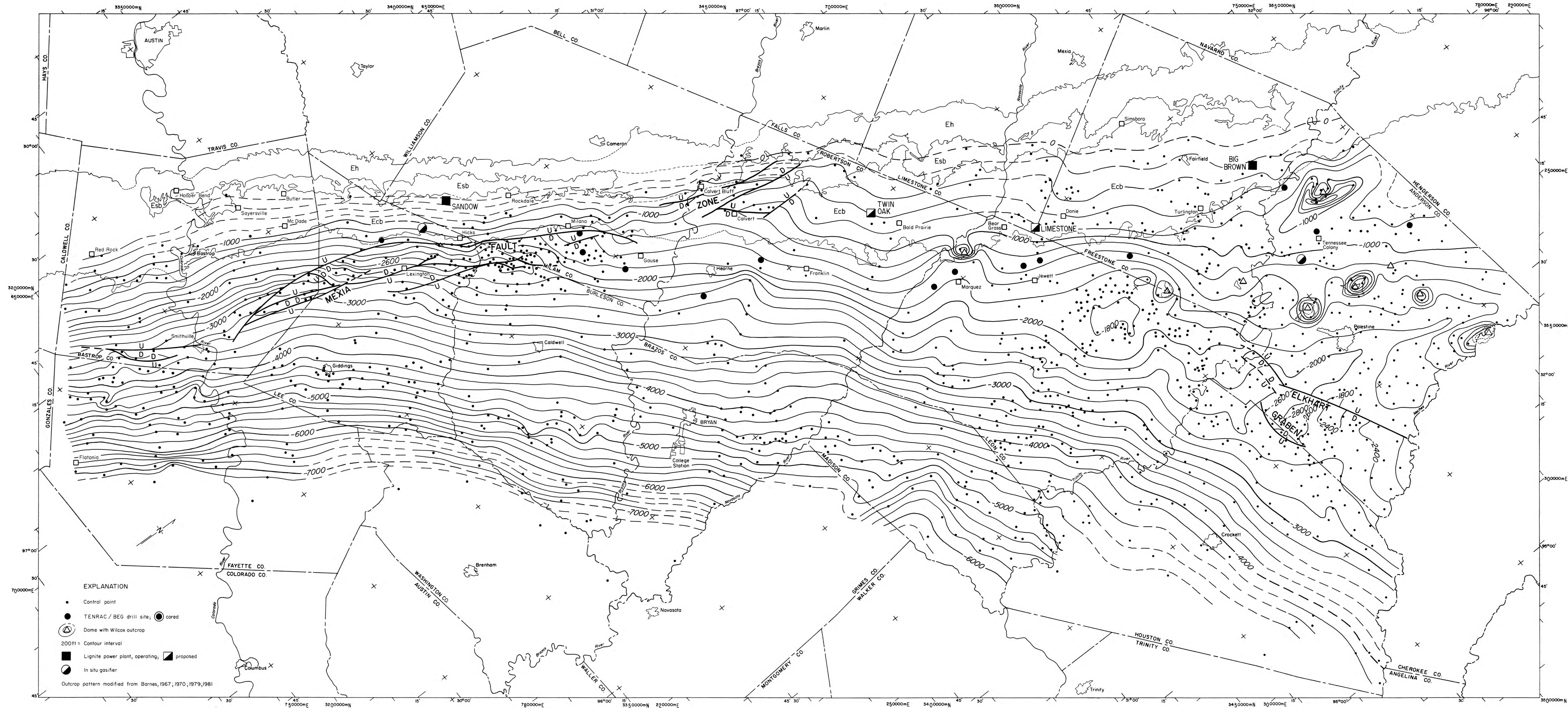




ATTACHMENT 3 –
REFERENCE MATERIALS



- EXPLANATION**
- Control point
 - TENRAC / BEG drill site; ● cored
 - ⊙ Dome with Wilcox outcrop
 - 200ft = Contour interval
 - Lignite power plant, operating; ▨ proposed
 - ⊙ In situ gasifier
- Outcrop pattern modified from Barnes, 1967, 1970, 1979, 1981

- Ecb Calvert Bluff Formation
- Esb Simsboro Formation
- Eh Hooper Formation

Base map adapted from Army Map Service base maps, 10,000-meter Universal Transverse Mercator grid, zones 14 and 15. Cartography by John T. Ames under the supervision of Richard L. Dillon.

by W. B. Ayers, Jr., and Amy H. Lewis

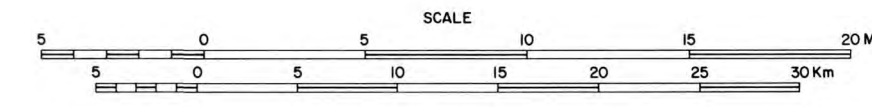


PLATE 2. WILCOX STRUCTURE MAP

1985

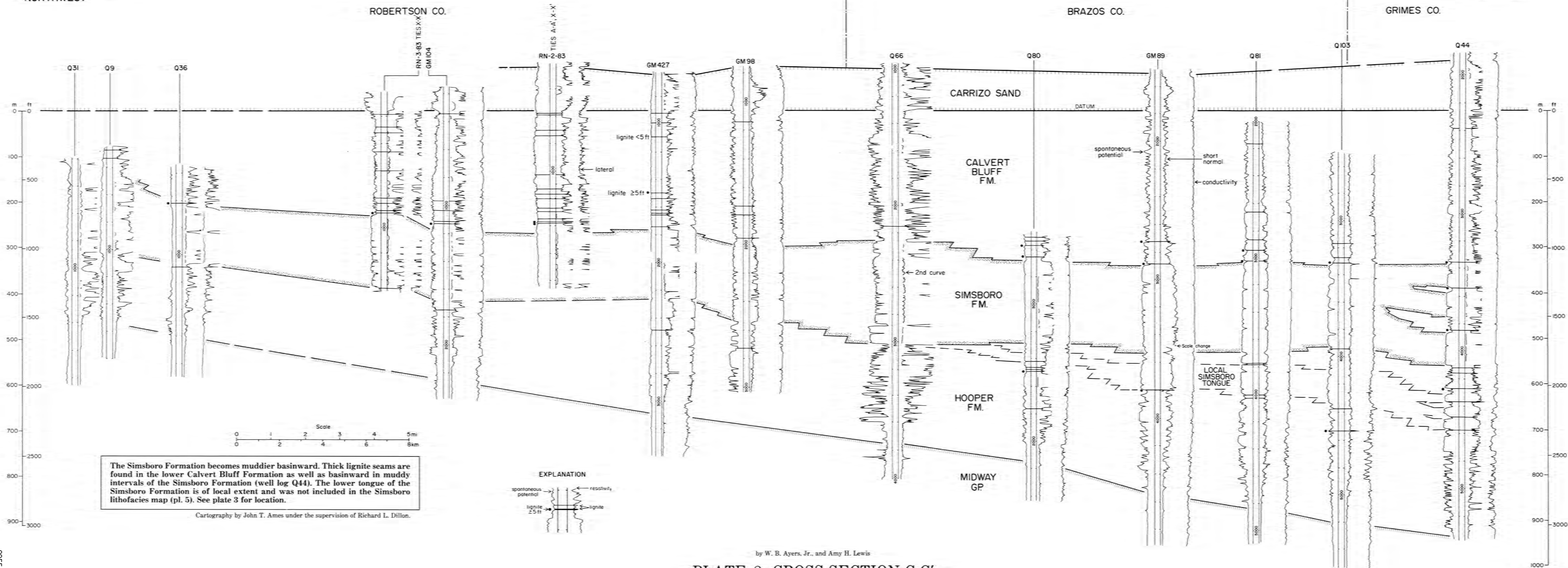
Generalized structure map drawn on the base of the Wilcox Group (sea-level datum) shows regional dip to the southeast. The angle of dip increases from the northeast (1/2°) to the southwest (2°). Major structural elements are the Mexia Fault Zone, the Elkhart Graben, salt structures in Anderson and Freestone Counties, and the East Texas Basin (fig. 2).

C

NORTHWEST

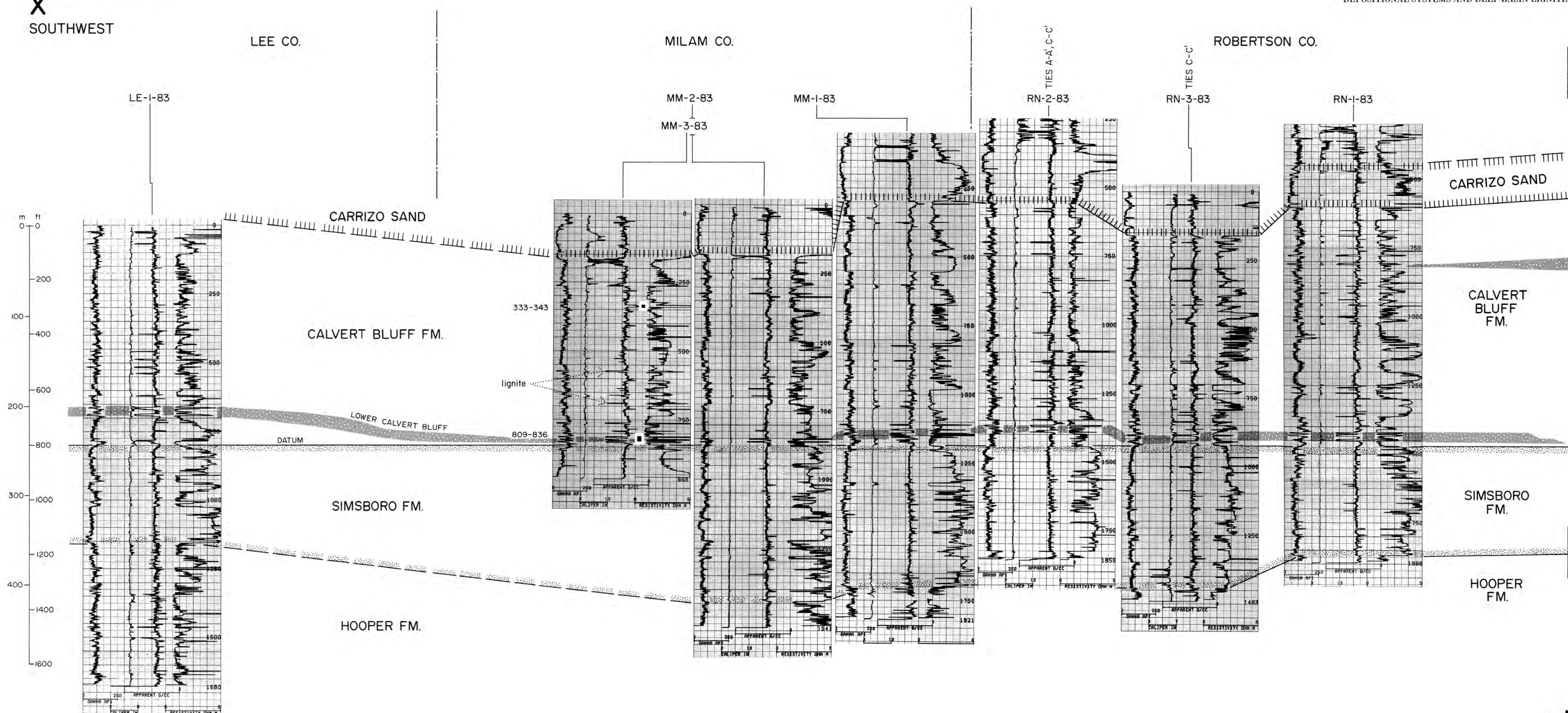
C'

SOUTHEAST

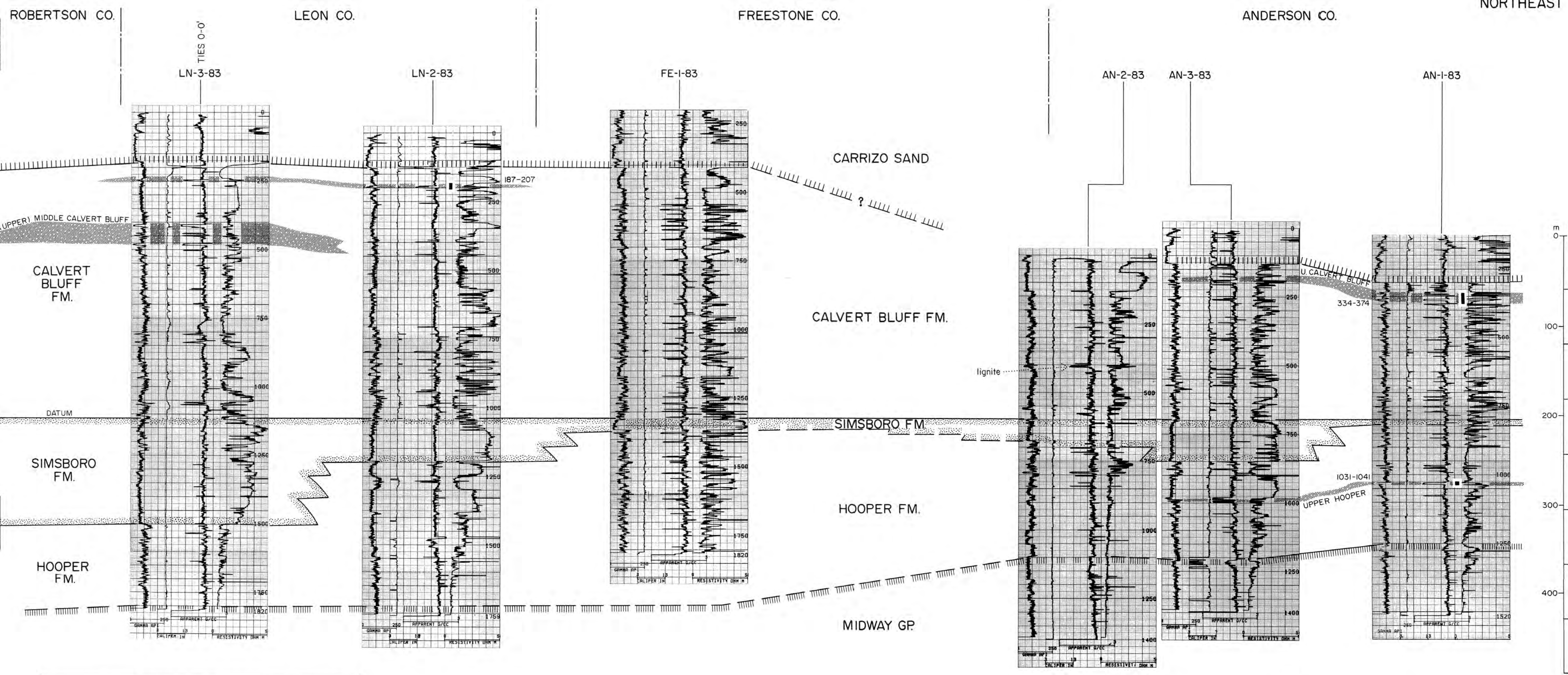


by W. B. Ayers, Jr., and Amy H. Lewis
 PLATE 8. CROSS SECTION C-C'
 1985

X
SOUTHWEST



MATCH LINE

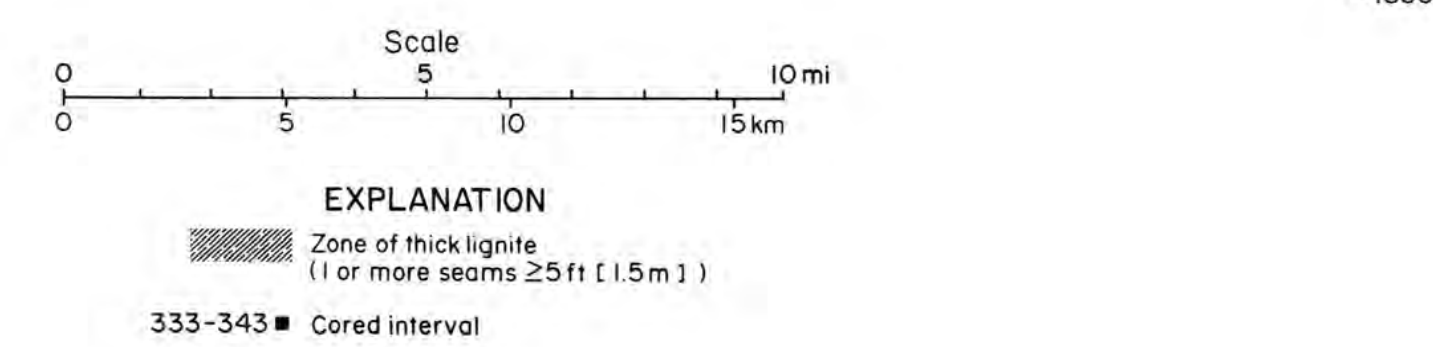


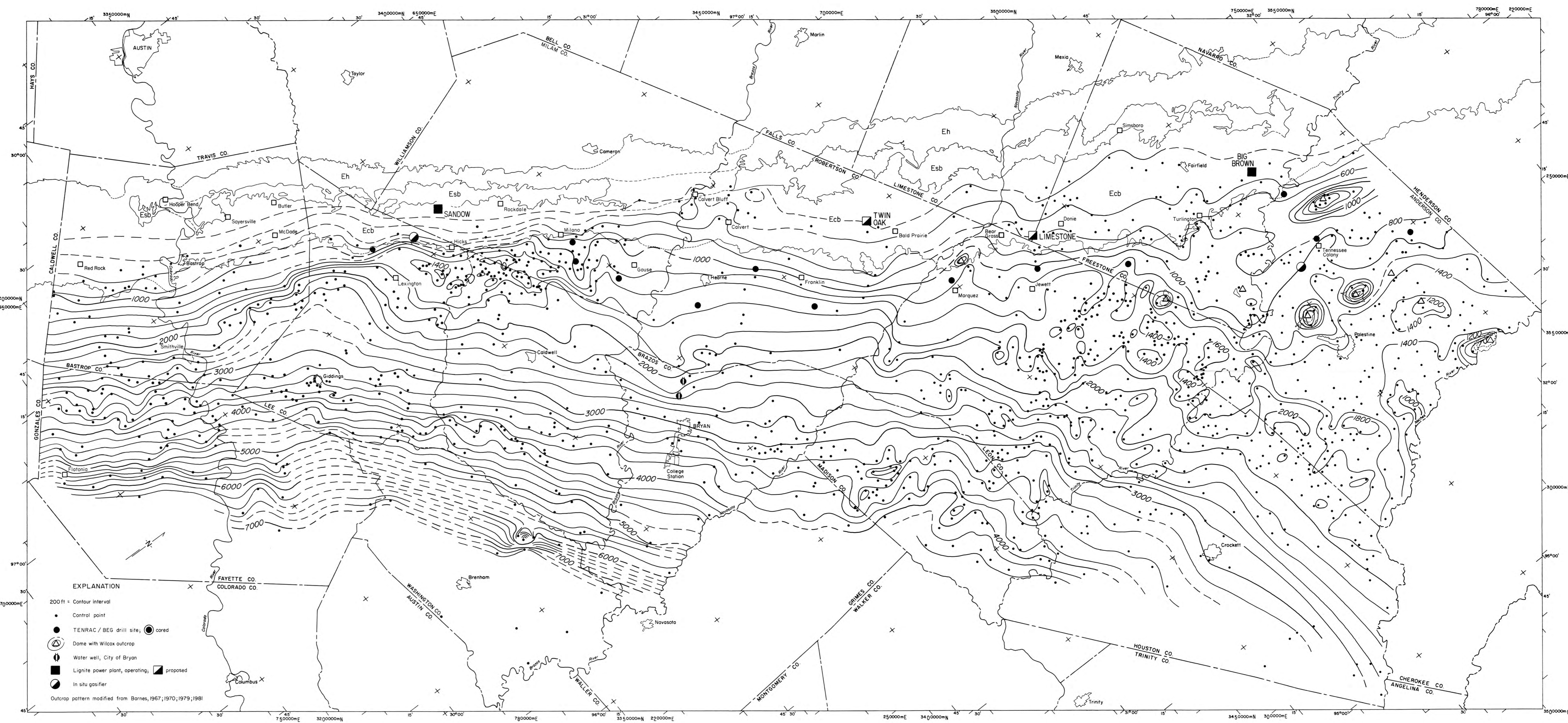
X'
NORTHEAST

Geophysical logs from Texas Energy and Natural Resources Advisory Council/Bureau of Economic Geology wells show the stratigraphic occurrence of deep lignite (200 to 2,000 ft [61 to 610 m]) in east-central Texas. Thick lignite seams (seams 5 ft [1.5 m] or thicker) are found in the (a) upper Hooper Formation on the northeast, (b) lower Calvert Bluff Formation on the southwest, and (c) upper Calvert Bluff Formation on the northeast. Lateral continuity of individual lignite seams within the zones is neither implied nor true; wells were drilled in low-sand (floodbasin) areas between major-sand axes, which limit seam continuity. See plate 3 for location. Full-scale geophysical well logs are available from the Bureau of Economic Geology.

PLATE 22. LIGNITE CROSS SECTION X-X'
1985

by W. B. Ayers, Jr., and Amy H. Lewis





- EXPLANATION**
- 200 ft = Contour interval
 - Control point
 - TENRAC / BEG drill site; ● cored
 - ⊙ Dome with Wilcox outcrop
 - ⊕ Water well, City of Bryan
 - Lignite power plant, operating; ▨ proposed
 - ⊙ In situ gasifier
- Outcrop pattern modified from Barnes, 1967; 1970; 1979; 1981

- Ecb Calvert Bluff Formation
- Esb Simsboro Formation
- Eh Hooper Formation

Base map adapted from Army Map Service base maps, 10,000-meter Universal Transverse Mercator grid, zones 14 and 15. Cartography by John T. Arnes under the supervision of Richard L. Dillon.

by W. B. Ayers, Jr., and Amy H. Lewis

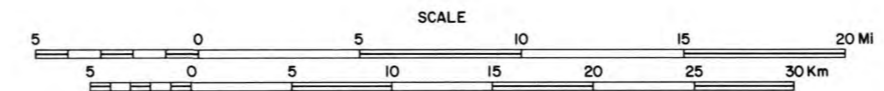


PLATE 28. SIMSBORO OVERBURDEN MAP

1985

The depth to the top of the Simsboro (Simsboro overburden) provides an estimate of the depth required to test the entire lignite-bearing Calvert Bluff Formation.

04E1984-28

0457