

Brazos Valley Groundwater Conservation District

Model Simulation
Results For BVGCD
Permits Issued in the
Simsboro Aquifer
since last DFC

June 8, 2023

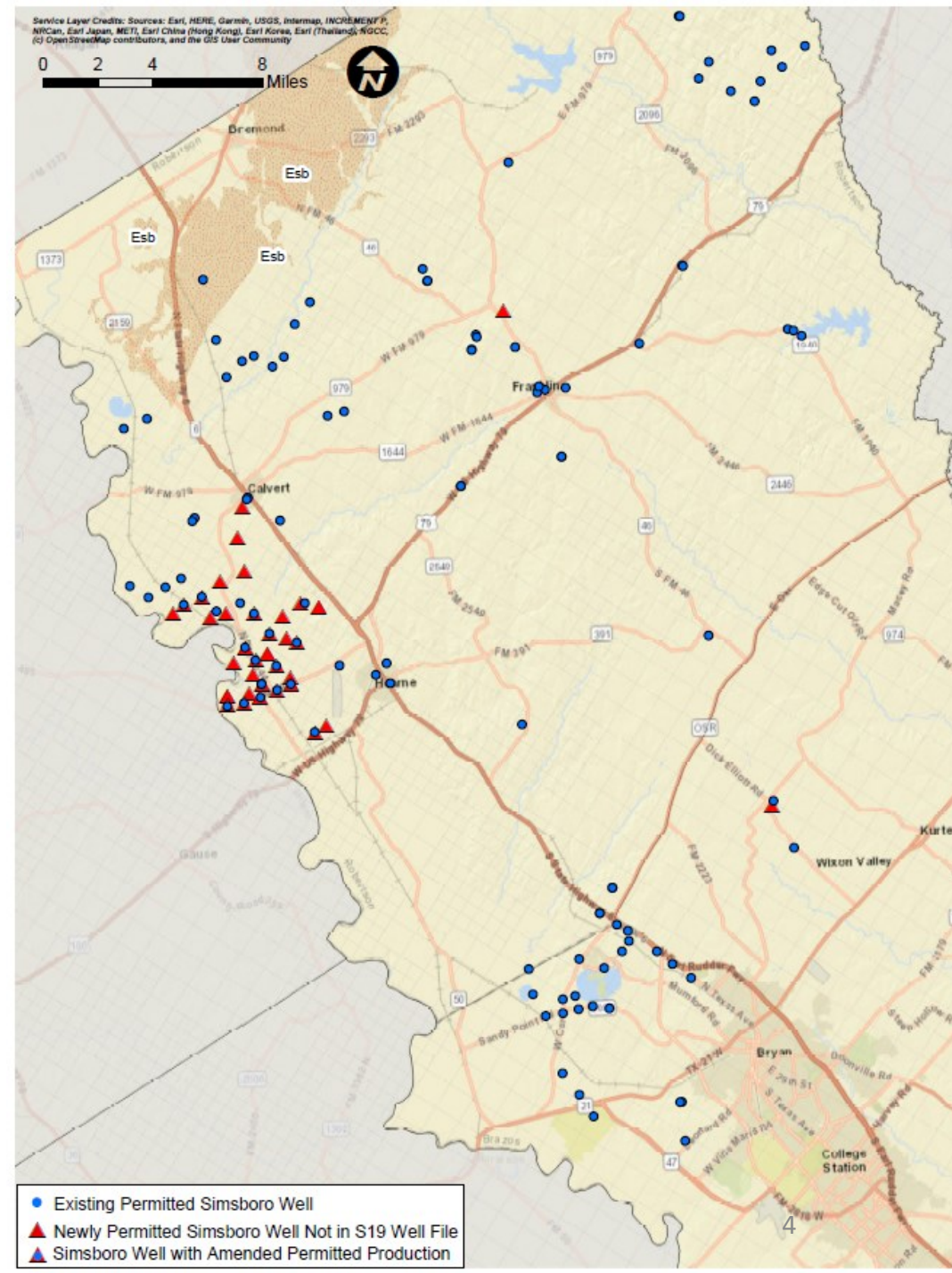
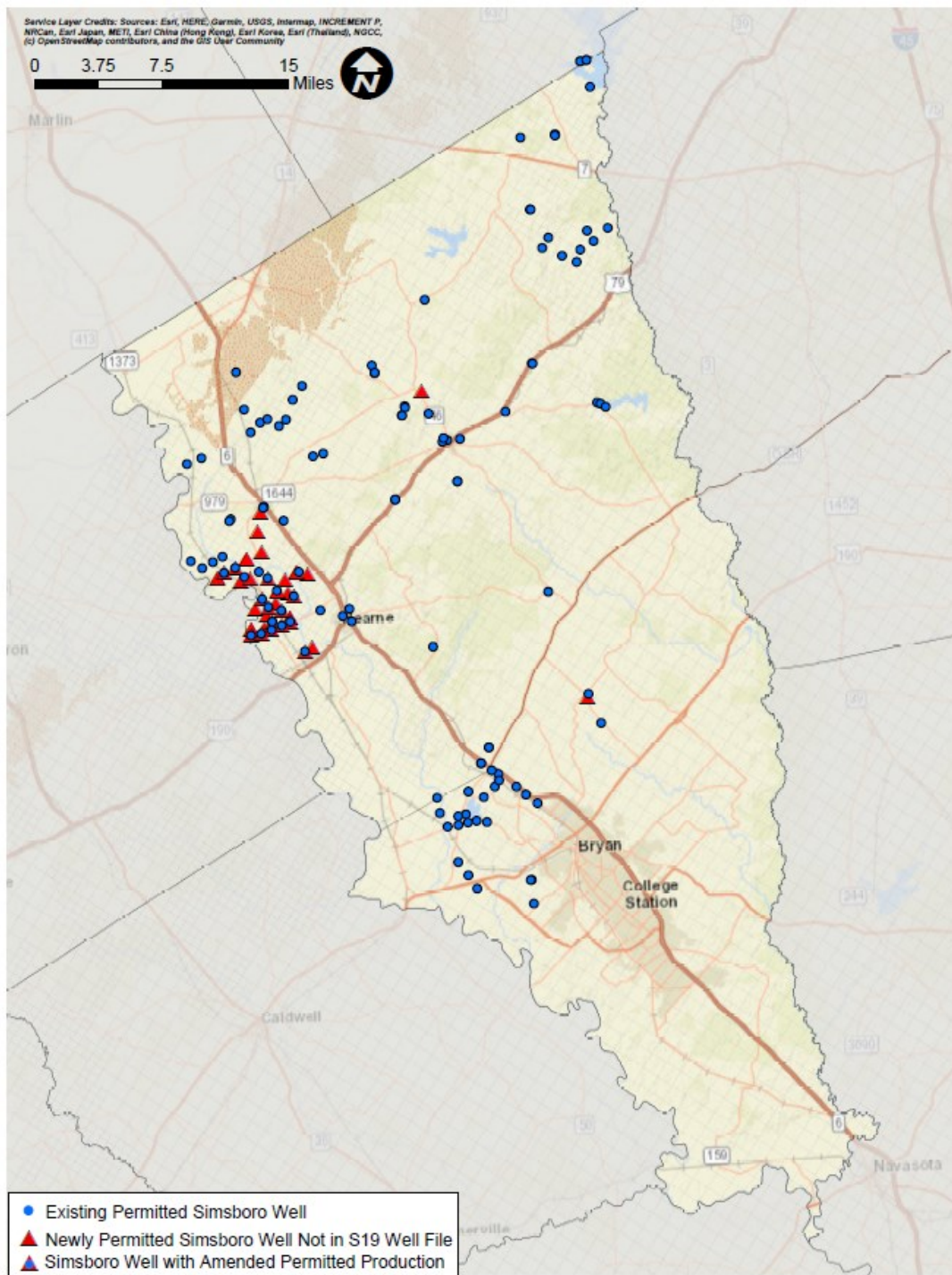
Purpose of Run

- GMA 12 Joint Planning meeting scheduled for June 29
- Preparation for DFC discussions
- How to proceed in the next planning cycle

Assumption for Simulation (V1)

- “S-19” well file used as base pumping with GAM V3.02
- No other changes to pumping in GMA 12
- For BVGCD permits approved since S-19, the full permit volume was produced starting in 2025
- Permits included:
 - Updated Upwell
 - Trey Skiles
 - James Brien
 - Robertson County WSC
 - Wickson Creek SUD – Well 9
 - City of Calvert

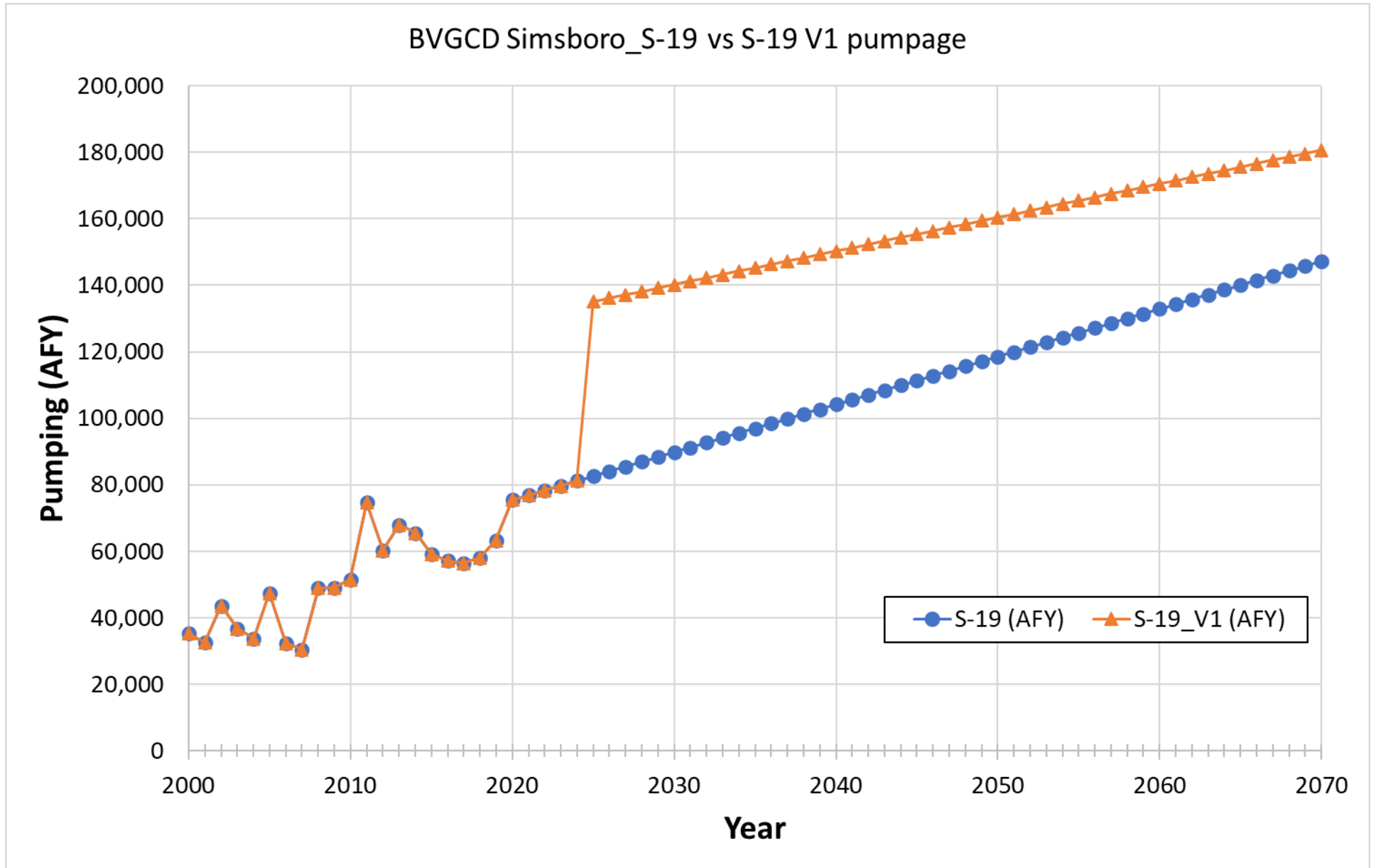
Simulated BVGCD Simsboro Aquifer Permitted Well Locations



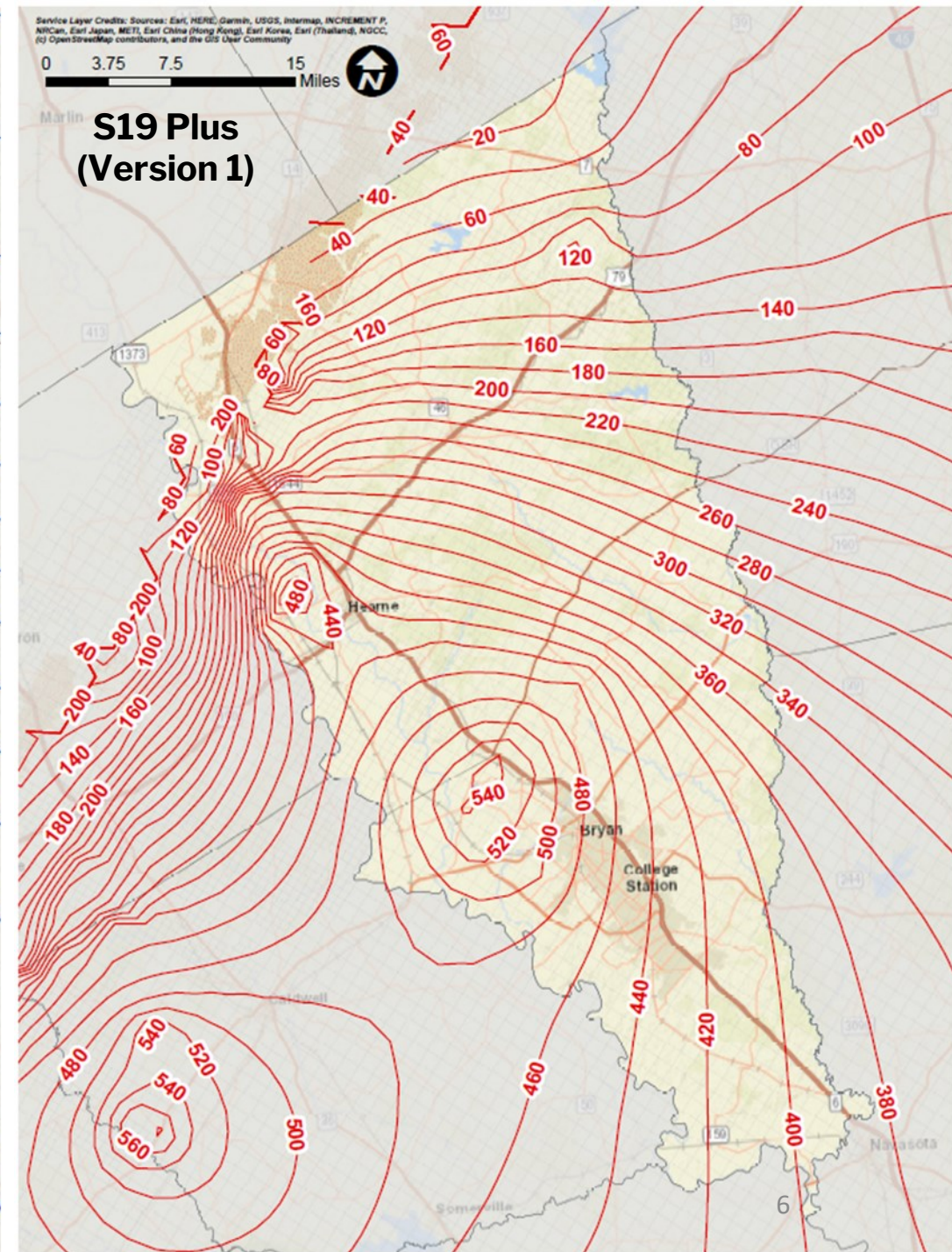
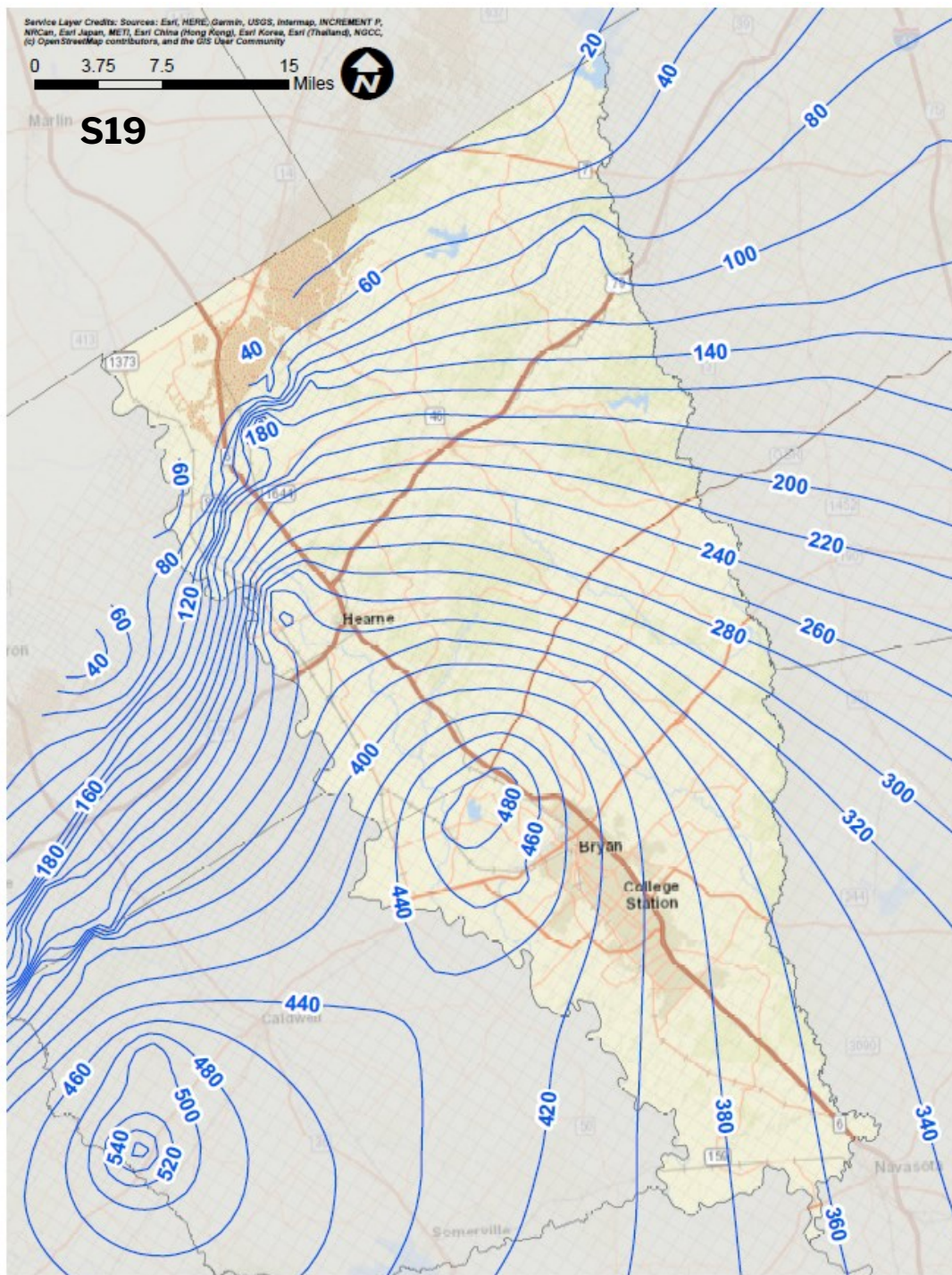
- Existing Permitted Simsboro Well
- ▲ Newly Permitted Simsboro Well Not in S19 Well File
- ▲ Simsboro Well with Amended Permitted Production

- Existing Permitted Simsboro Well
- ▲ Newly Permitted Simsboro Well Not in S19 Well File
- ▲ Simsboro Well with Amended Permitted Production

Simulated BVGCD Simsboro Aquifer Permitted Well Locations

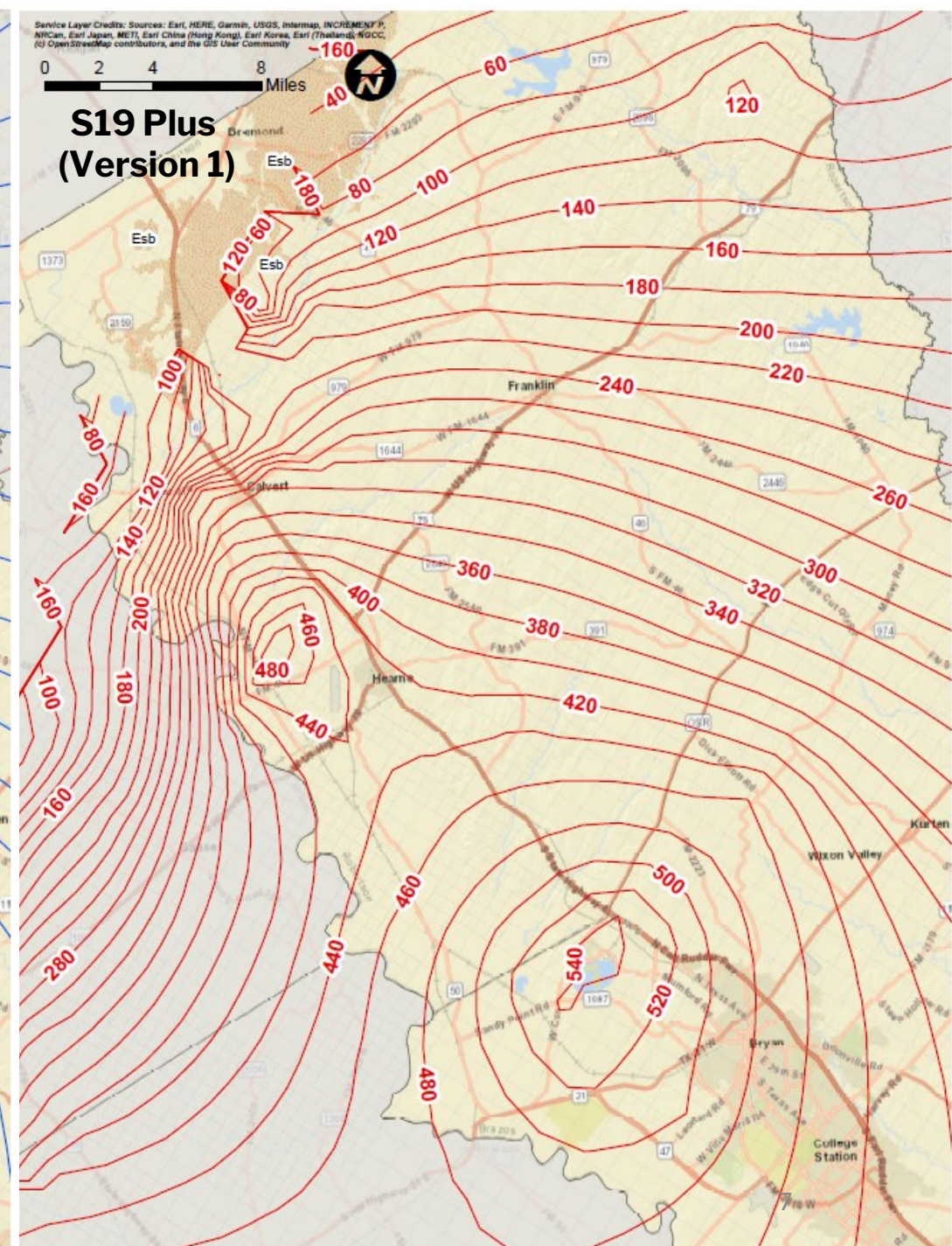
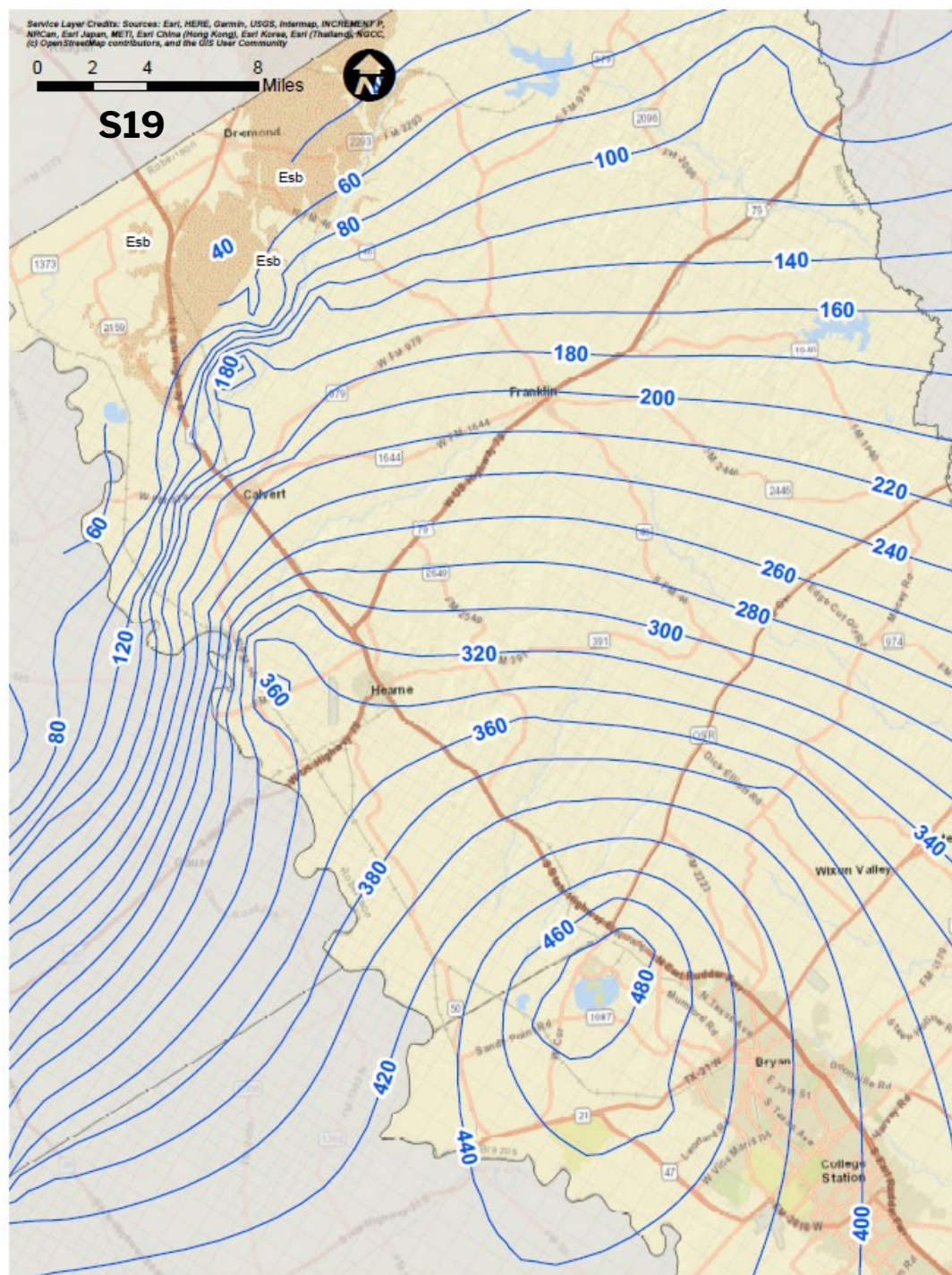


Simulated Simsboro Aquifer Drawdown 2000-2070 (BVGCD Overview)



Drawdown Contour
Contour Interval = 20 feet

Simulated Simsboro Aquifer Drawdown 2000-2070

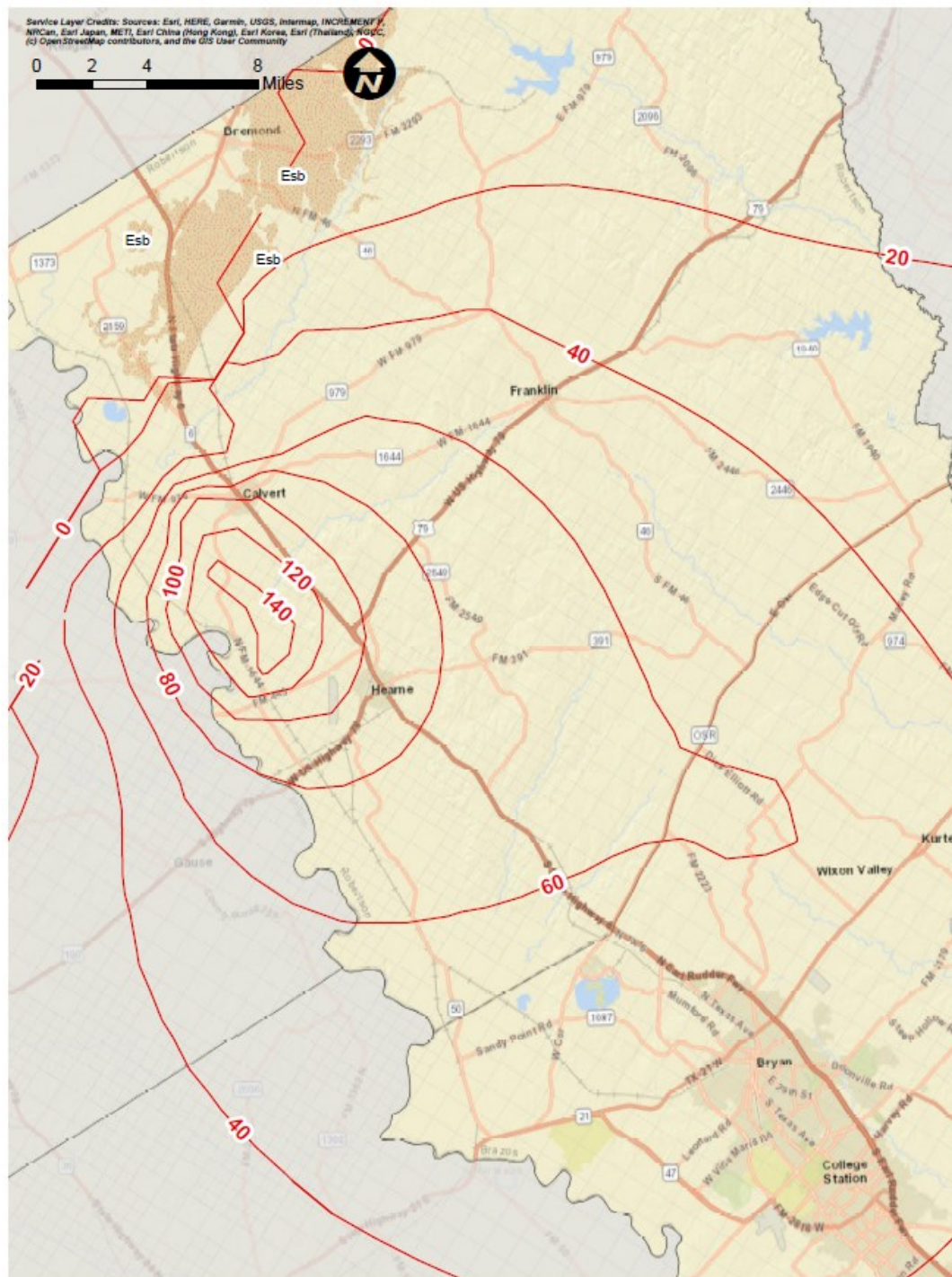


Drawdown Contour
Contour Interval = 20 feet

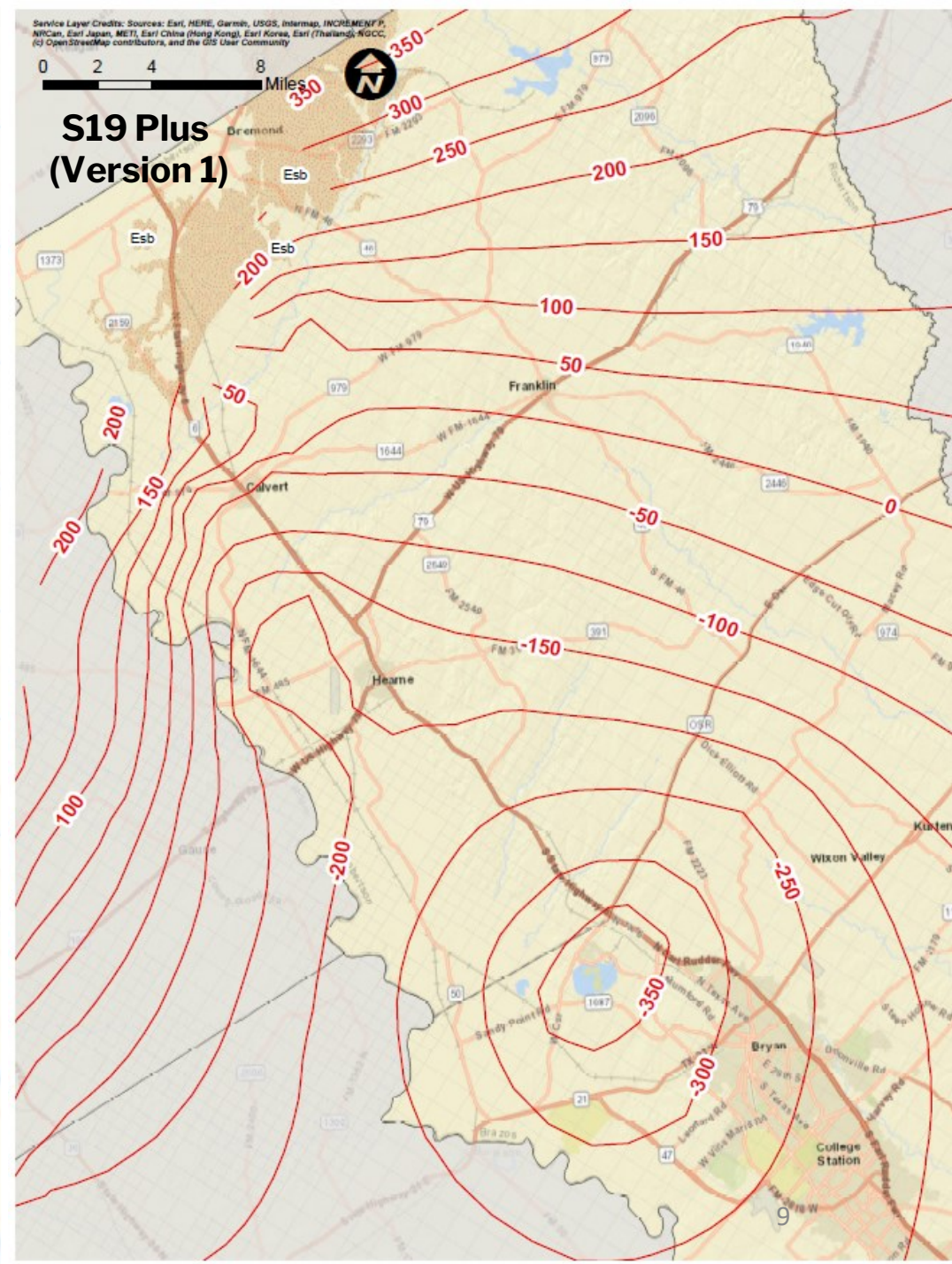
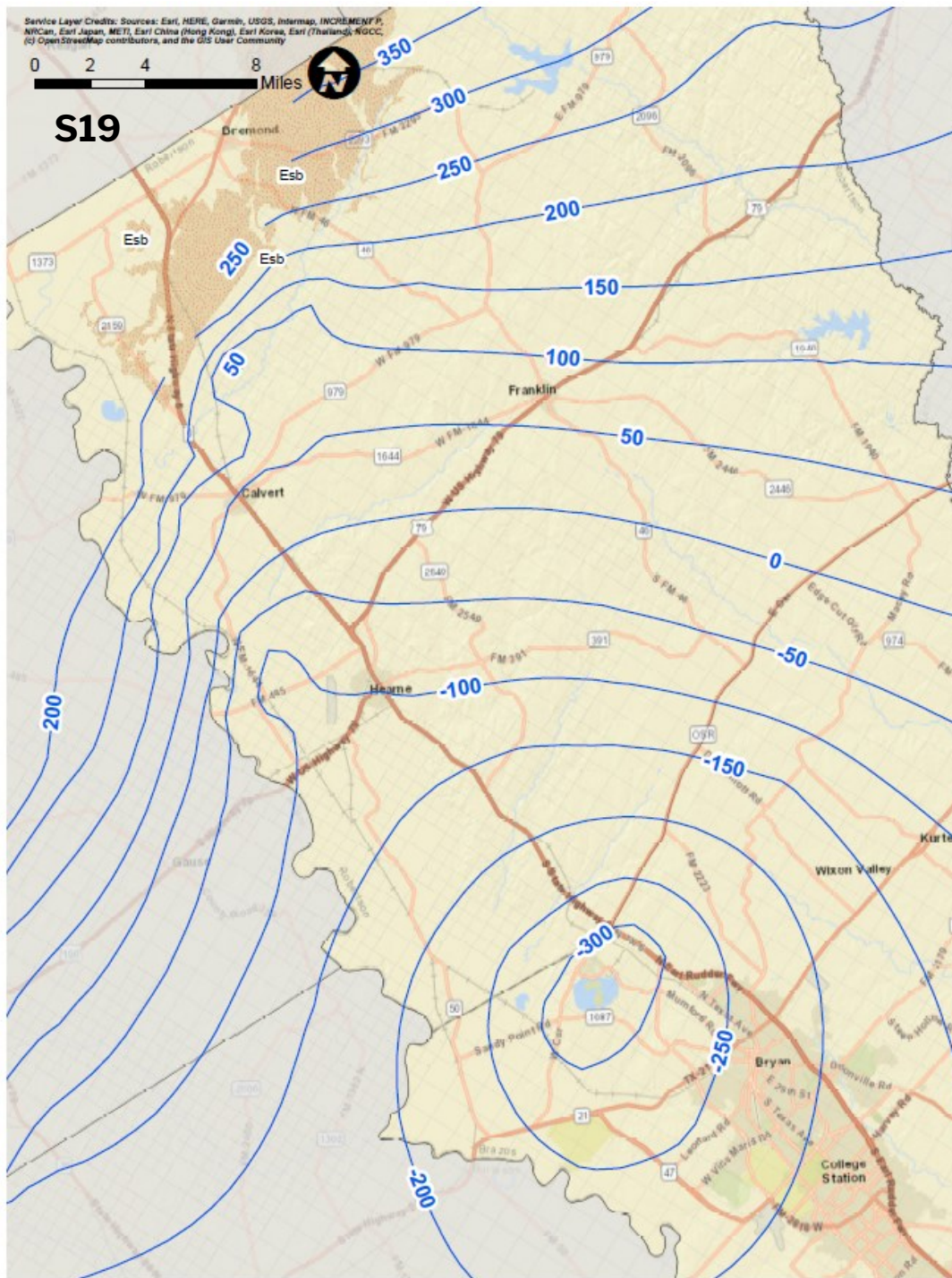
Additional Drawdown In the Simsboro Aquifer Due to Permitted Pumping Issued Following the Development of the S19 Well File

Additional Drawdown = S19 Plus (Version 1) – S19

Drawdown Difference Contour
Contour Interval = 20 feet



Simulated Simsboro Aquifer Water Level /Head Elevations at 2070



Average simulated BVGCD drawdown through time

